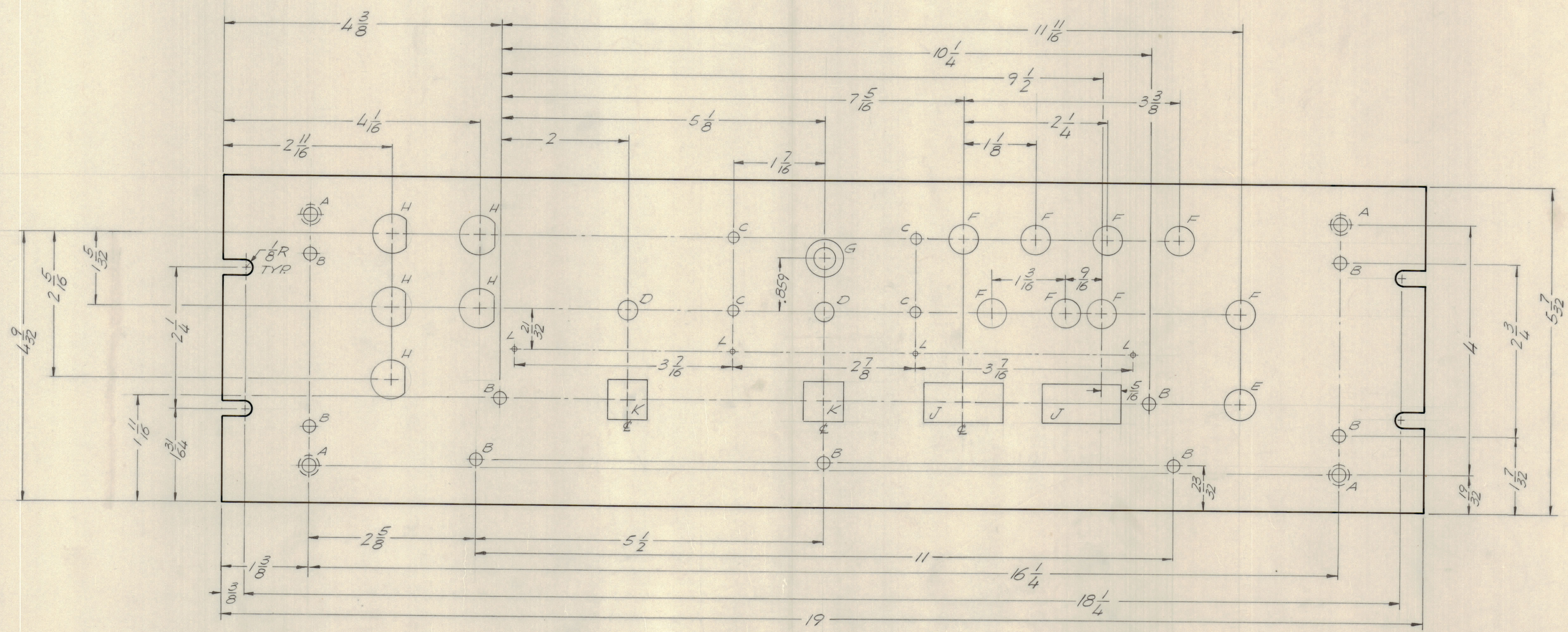


REVISIONS					DATE	APPROVED	
E.M.N.O.	DRAFT	CHKD	ZONE	LTR	DESCRIPTION		
	CV			Ø	ORIGINAL RELEASE FOR PRODUCTION	8/23/71	AK



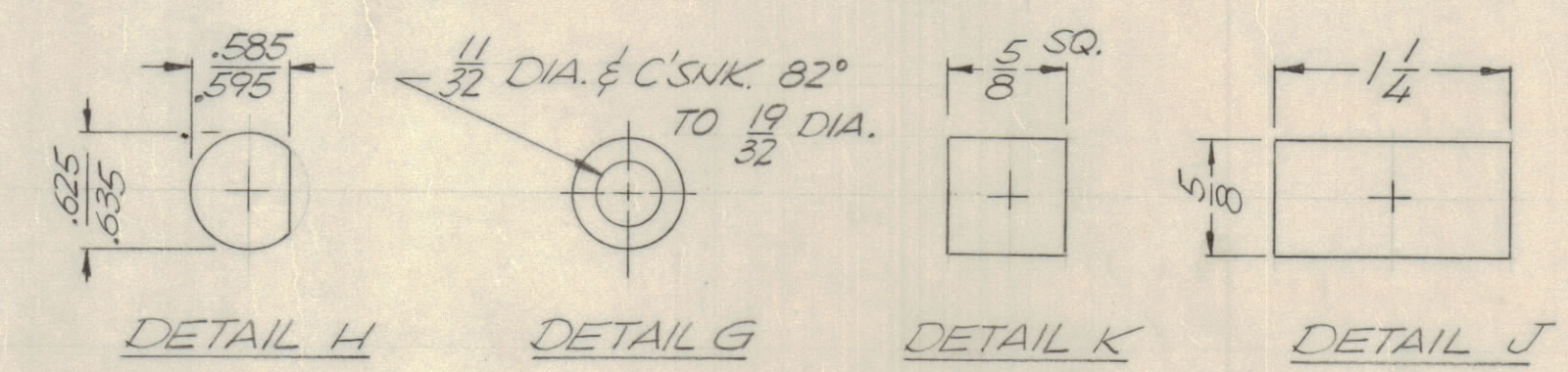
MACHINING:

1. MILL ALL EDGES.
2. HOLES MUST BE DRILLED, UNLESS OTHERWISE SPECIFIED.
3. LATERAL BOW OF PANEL MUST BE KEPT TO .031 TOLERANCE.
4. PANEL MUST BE FREE OF ALL MACHINING MARKS, GOUGES AND SCRATCHES. IF NECESSARY, SAND FRONT OF PANEL WITH NO. 120 GRIT SANDPAPER.

FINISH NOTES:

1. S404 - IRIDITE 14-2 AL-COAT.
2. S114 - ZINC CHROMATE PRIMER } FRONT AND
3. S115 - SMOOTH GRAY ENAMEL } EDGES ONLY

HOLE	DESCRIPTION	QTY.
A	.186 DIA. & C'SUK TO .390 ON REAR	4
B	13/64 DIA.	9
C	11/64 DIA.	4
D	5/16 DIA.	2
E	1/2 DIA.	1
F	15/32 DIA.	8
G	SEE DETAIL	1
H	SEE DETAIL	5
J	SEE DETAIL	2
K	SEE DETAIL	2
L	.076 DIA.	4



REF. LD 2437

QTY / UNIT	MODEL USED ON	ASS'Y NO.
1	LSCA-7	
APPLICATION		
CODE		

UNLESS OTHERWISE SPECIFIED DIMENSIONS ARE IN INCHES AND INCLUDE CHEMICALLY APPLIED OR PLATED FINISHES

TOLERANCES ON
 DECIMALS .X ± .05
 .XX ± .01
 .XXX ± .005

FRACTIONS ± 1/64
 ANGLES = 0° -30'

MATERIAL 2024-T3
 .187 THK. ALUMINUM
 FINISH AS NOTED

QTY. REQ.	ITEM	PART NO.	DESCRIPTION	SYMBOL
S. DE MARCO RE. LIST OF MATERIAL				
FINAL APPROVAL		DATE	THE TECHNICAL MATERIEL CORP. MAMARONECK, NEW YORK PANEL, FRONT	
MECH. DES.		DATE		
ELECT. DES.		DATE		
CHECKED		DATE		
DRAWN		DATE		
MATERIAL 2024-T3 .187 THK. ALUMINUM FINISH AS NOTED			SIZE CODE IDENT NO. DWG NO.	ISSUE
			D 82679 MS 5930	Ø
SCALE 1:1			SHEET OF	