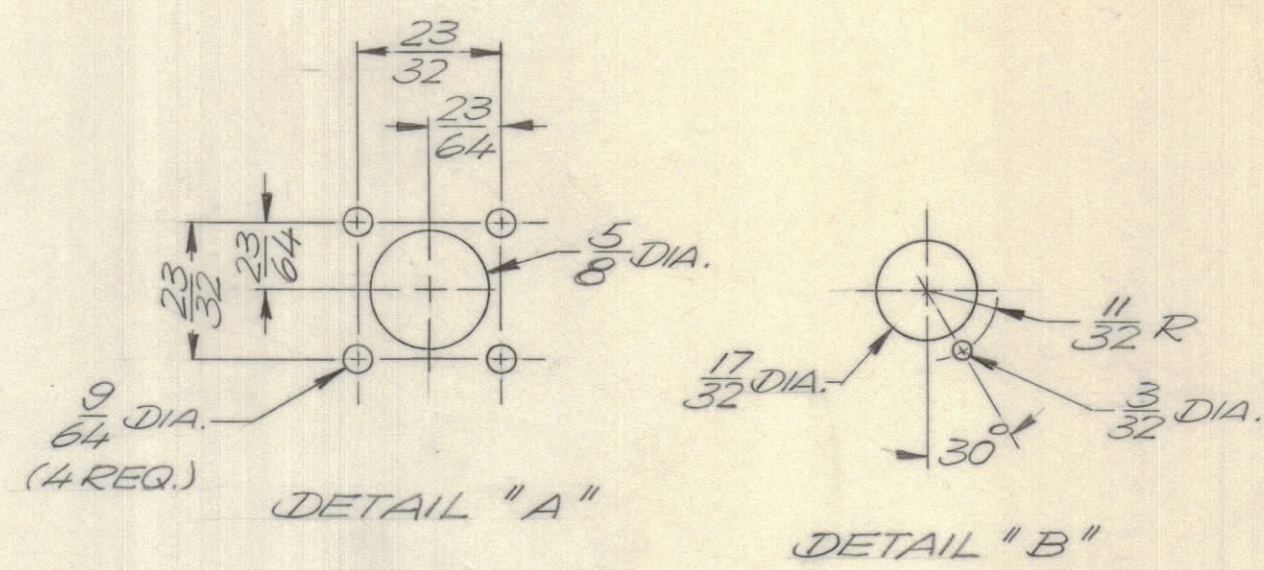
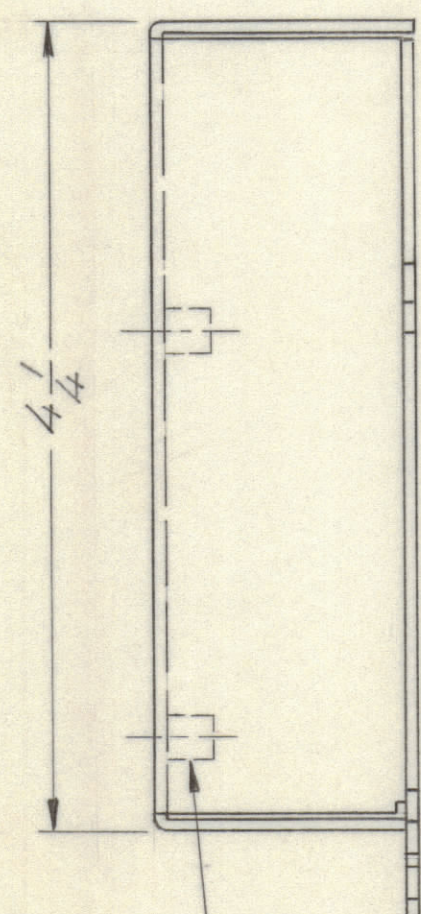
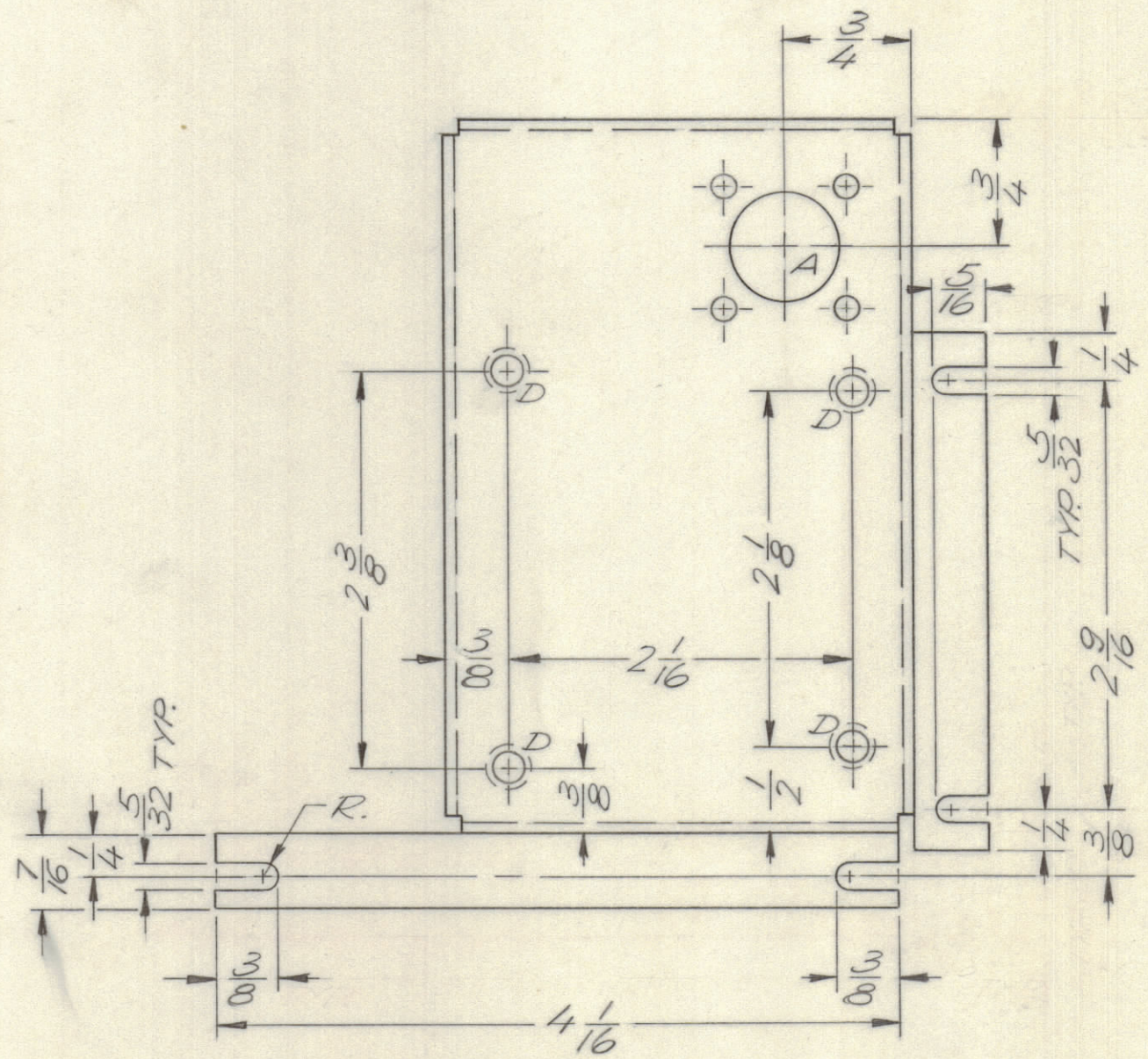
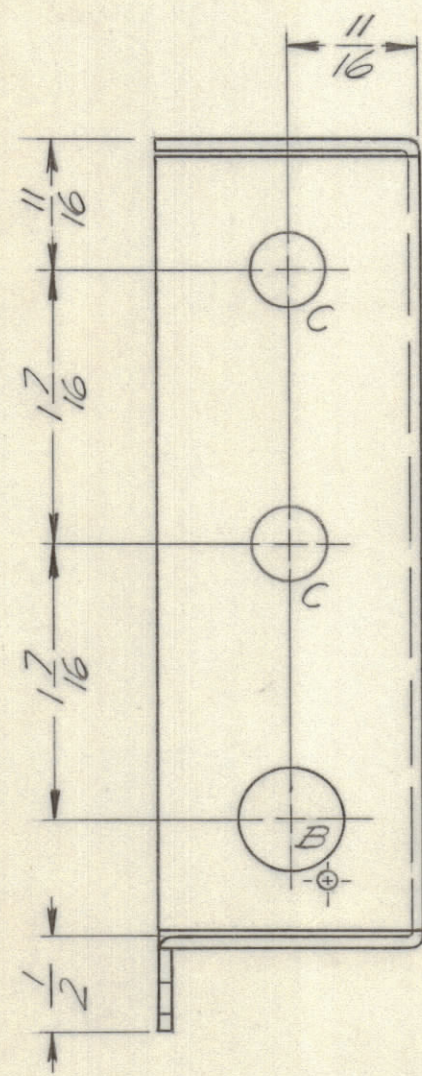
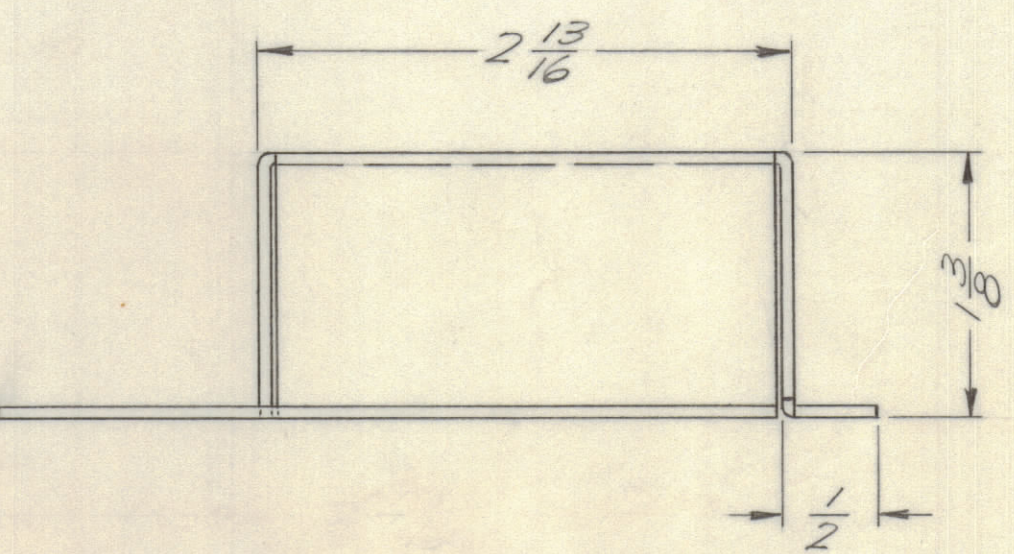


					REVISIONS		
E.M.N.NO	DRAFT	CHKD	ZONE	LTR	DESCRIPTION	DATE	APPROVED
	PL			X	EXP. RELEASE	6/9/70	
	CB			B	ORIGINAL RELEASE	5/24/73	



HOLE LEGEND
 A ~ SEE DETAIL (1 REQ.)
 B ~ SEE DETAIL (1 REQ.)
 C ~ 3/8 DIA. (2 REQ.)
 D ~ .189 DIA. (4 REQ.)

- UNLESS OTHERWISE SPECIFIED:**
- USE MATERIAL THICKNESS FOR MAXIMUM RADIUS ON ALL BENDS.
 - ALL ANGULAR BENDS 90 DEGREES.
 - REMOVE ALL BURRS AND SHARP EDGES.
 - MOUNT INSERTS AFTER FINISHING.



① MOUNT IN ALL "D" HOLES AS SHOWN

1	HERR-5	KIT
QTY / UNIT	MODEL USED ON	ASS'Y NO.
APPLICATION		
CODE	5401-451	
A		
NOTICE TO PERSONS RECEIVING THIS DRAWING		
THE TECHNICAL MATERIEL CORPORATION claims proprietary right in the material disclosed hereon. This drawing is issued in confidence for engineering information only and may not be reproduced or used to manufacture anything shown hereon without permission from THE TECHNICAL MATERIEL CORPORATION to the user. This drawing is loaned for mutual assistance and is subject to recall at any time.		

UNLESS OTHERWISE SPECIFIED DIMENSIONS ARE IN INCHES AND INCLUDE CHEMICALLY APPLIED OR PLATED FINISHES

TOLERANCES ON

DECIMALS	FRACTIONS
.X ± .05	± 1/64
.XX ± .01	ANGLES
.XXX ± .005	± 0° -30'

MATERIAL .064 ALUM.
5052-H32

FINISH S404 YEL. IRIDITE

4	1	TE 108-1	STANDOFF, RIVET TYPE	D
QTY. REQ.	ITEM	PART NO.	DESCRIPTION	SYMBOL
LIST OF MATERIAL				
FINAL APPROVAL <i>[Signature]</i> DATE 5/9/73				
MECH. DES. <i>[Signature]</i> DATE 6/12/70				
ELECT. DES. DATE				
CHECKED <i>[Signature]</i> DATE 6-12-70				
DRAWN <i>[Signature]</i> DATE 6/9/70				
THE TECHNICAL MATERIEL CORP. MAMARONECK, NEW YORK				
CHASSIS, PC BD				
SIZE	CODE IDENT NO.	DWG NO.	ISSUE	
C	82679	MS 5921	0	
SCALE 1:1			SHEET	OF

MS 5921/A