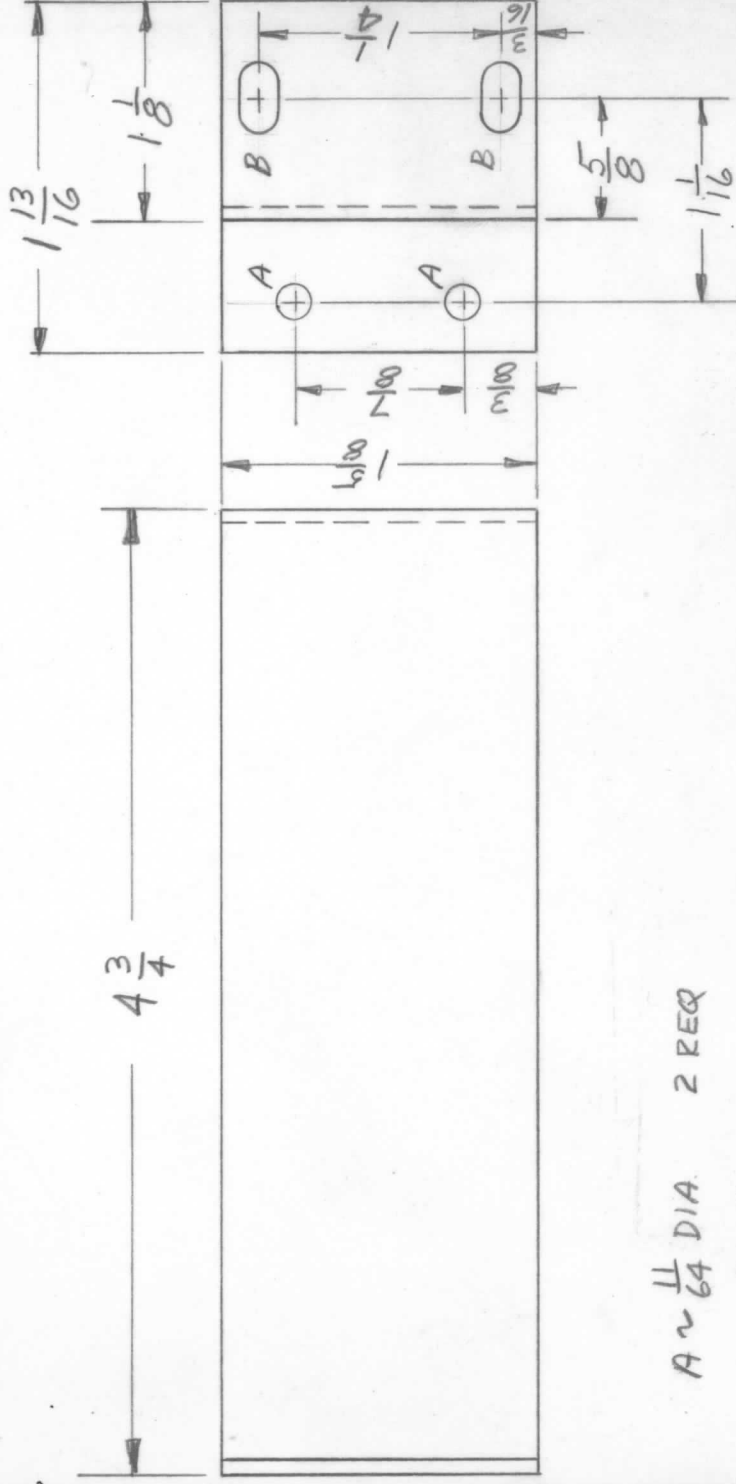


APPLICATION

REVISIONS

QTY	MODEL USED ON	ASS'Y NO.	LTR	DESCRIPTION	DATE	E.M.N.NO	DRAFT	CHKD	APPD
12	DDR-7Z		Ø	ORIGINAL RELEASE	1/23/70		Q.		



A ~ 1/64 DIA. 2 REQ
 B ~ 3/16 X 3/8 SLOT 2 REQ.

UNLESS OTHERWISE SPECIFIED DIMENSIONS ARE IN INCHES AND INCLUDE CHEMICALLY APPLIED OR PLATED FINISHES	REQ'D ITEM	PART NUMBER	DESCRIPTION	SYM.
DECIMALS .X ± .05 .XX ± .01 .XXX ± .005	POSE		LIST OF MATERIAL	
FRACTIONS 1/64 ANGLES 0°-30'	FINAL APPROVAL	DATE	THE TECHNICAL MATERIEL CORP. MAMARONECK, NEW YORK	
MATERIAL .061 ALUM 5052-H32	MECH. DES.	DATE	BRACKET, STR SUPT.	
FINISH S404 YEL IRID	ELECT. DES.	DATE		
	CHECKED	DATE		
	DRAWN	DATE		
NOTICE TO PERSONS RECEIVING THIS DRAWING		DWG NO.	ISSUE	
THE TECHNICAL MATERIEL CORPORATION claims proprietary right in the material disclosed hereon. This drawing is issued in confidence for engineering information only and may not be reproduced or used to manufacture anything shown hereon without permission from THE TECHNICAL MATERIEL CORPORATION to the user. This drawing is loaned for mutual assistance and is subject to recall at any time.		A 82679	Ø	
		SCALE	SHEET	OF