

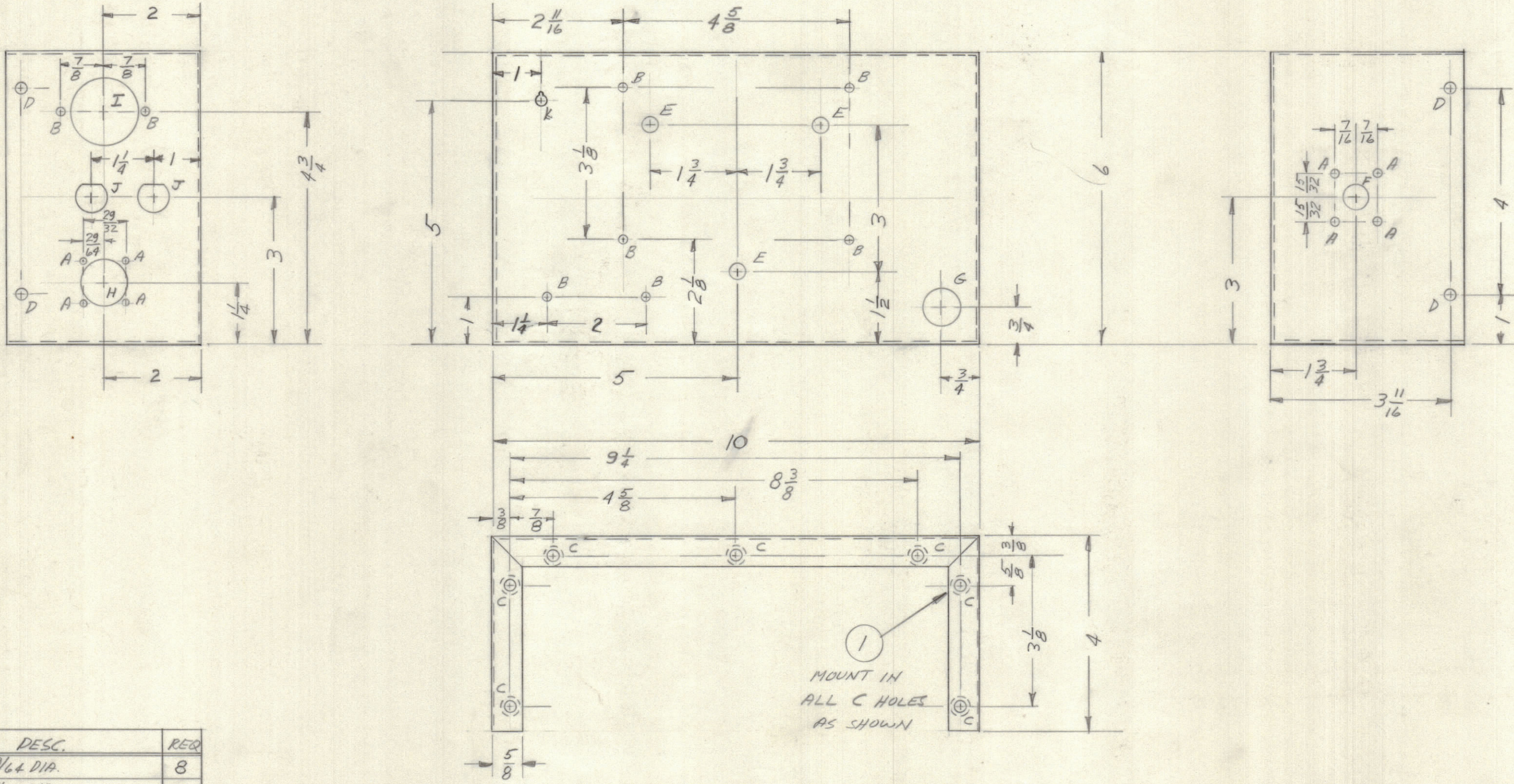
4

3

2

1

REVISIONS						
E.M.N.NO	DRAFT	CHKD	ZONE	LTR	DESCRIPTION	DATE
	KD			B	ORIGINAL RELEASE FOR PRODUCTION	11-24-69



HOLE	DESC.	REQ
A	3/64 DIA.	8
B	1/64 DIA.	8
C	.221-.224 DIA.	14
D	13/64 DIA.	4
E	5/16 DIA.	3
F	1/2 DIA.	1
G	3/4 DIA.	1
H	15/16 DIA.	1
I	1-3/8 DIA.	1
J	SEE DETAIL	2
K	SEE DETAIL	1

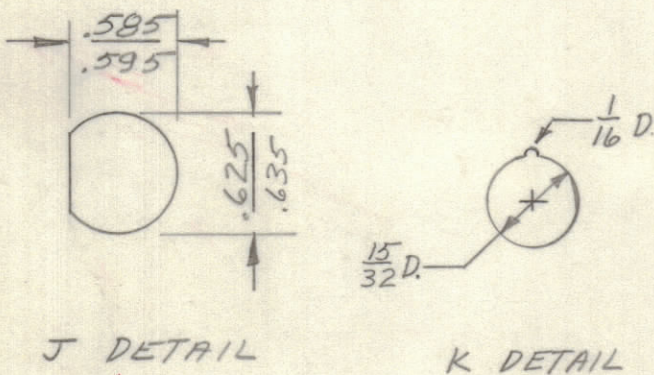
UNLESS OTHERWISE SPECIFIED:

1. USE MATERIAL THICKNESS FOR MAXIMUM RADIUS ON ALL BENDS.
2. ALL ANGULAR BENDS 90 DEGREES.
3. REMOVE ALL BURRS AND SHARP EDGES.
4. MOUNT INSERTS AFTER FINISHING.

FINISH NOTES:

1. S404 - IRIDITE 14-2 AL-COAT.
2. S114 - ZINC CHROMATE PRIMER
3. S115 - SMOOTH GRAY ENAMEL

OR
PRIME AND PAINT PER CUSTOMER'S SPECIFICATIONS



QTY. REQ.	ITEM	PART NO.	DESCRIPTION	SYMBOL
14	1	NT129-0832-4	NUT, PLN, SPLINE	

BUDETTI		LIST OF MATERIAL	
FINAL APPROVAL	DATE		
<i>[Signature]</i>	11/9/69		
MECH. DES.	DATE		
<i>[Signature]</i>	8-0-69		
ELECT. DES.	DATE		
CHECKED	DATE		
DRAWN	DATE		
<i>[Signature]</i>	18 AUG 69		

THE TECHNICAL MATERIEL CORP.
MAMARONECK, NEW YORK

CHASSIS, T/R RELAY

1	PALA-10K	AX5104
QTY / UNIT	MODEL USED ON	ASS'Y NO.
APPLICATION		
	CODE	

UNLESS OTHERWISE SPECIFIED DIMENSIONS ARE IN INCHES AND INCLUDE CHEMICALLY APPLIED OR PLATED FINISHES

TOLERANCES ON

DECIMALS	FRACTIONS
.X ± .05	± 1/64
.XX ± .01	ANGLES
.XXX ± .005	± 0° -30'

MATERIAL .081 ALUM
5052-H32

FINISH
SEE NOTE

SIZE	CODE IDENT NO.	DWG NO.	ISSUE
C	82679	MS5702	<i>[Signature]</i>
SCALE			SHEET OF

NOTICE TO PERSONS RECEIVING THIS DRAWING
THE TECHNICAL MATERIEL CORPORATION claims proprietary right in the material disclosed herein. This drawing is issued in confidence for engineering information only and may not be reproduced or used to manufacture anything shown herein without permission from THE TECHNICAL MATERIEL CORPORATION to the user. This drawing is loaned for mutual assistance and is subject to recall at any time.

4

3

2

1