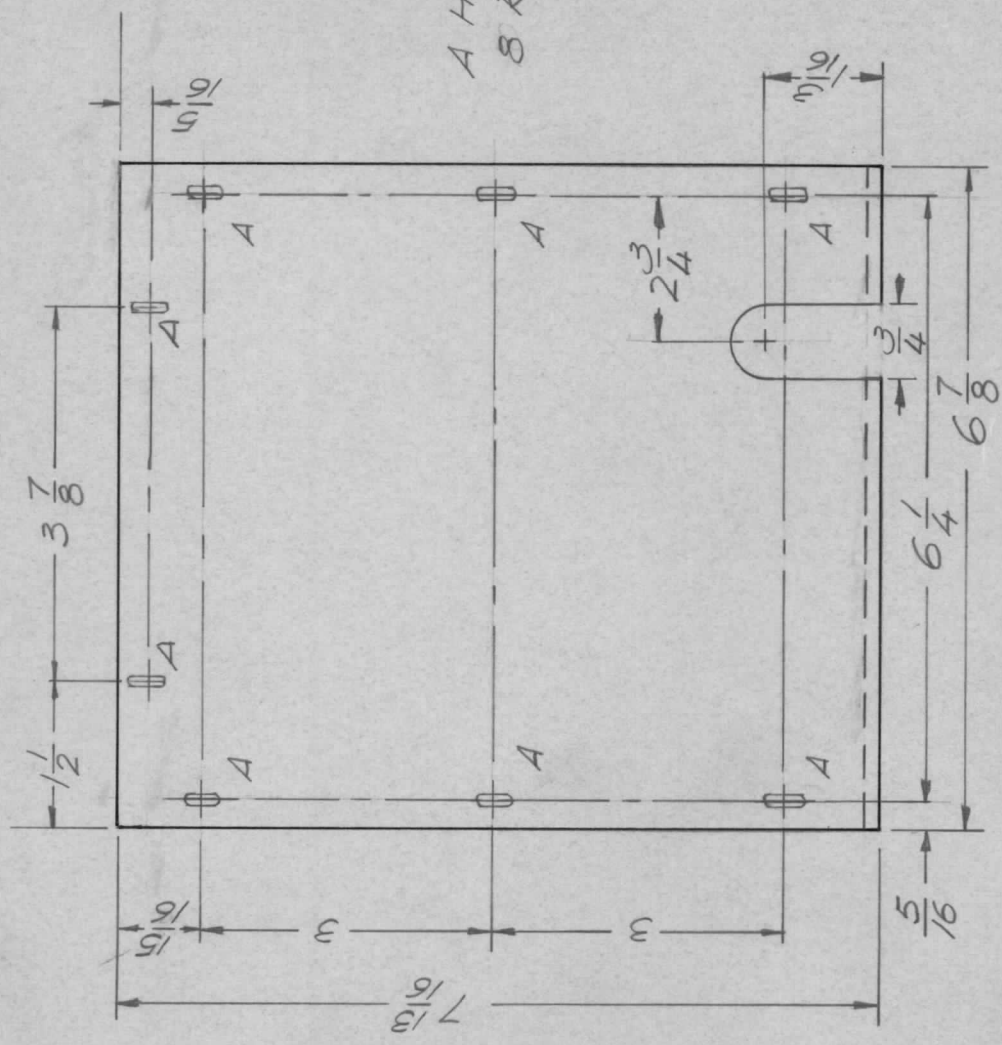
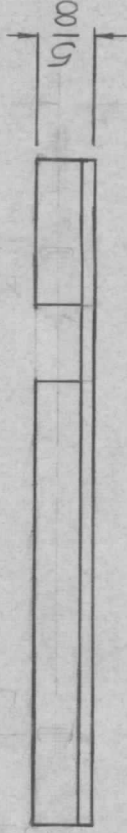


APPLICATION

QTY	MODEL USED ON	ASS'Y NO.	LTR
1	PALA 10K	AX5084	X1
1	HFL (-) - 10K	AX5114	Ø

REVISIONS

DESCRIPTION	DATE	E.M.N.NO	DRAFT	CHKD	APPD
REDRAWN	1/3/69		GE	WK	
ORIGINAL RELEASE	1/24/70		W.		
ADD 3/4 NOTCH	5/15/72	20694	GE	EJ	EJ



UNLESS OTHERWISE SPECIFIED DIMENSIONS ARE IN INCHES AND INCLUDE CHEMICALLY APPLIED OR PLATED FINISHES

DECIMALS
X ± .05
.XX ± .01
.XXX ± .005

FRACTIONS
1/64
ANGLES
0°-30°

MATERIAL: 063 ALUM.
5052 H32

FINISH: YEL. IRIDITE

REQ'D ITEM	PART NUMBER	DESCRIPTION
F. BUDETTI		LIST OF MATERIAL
FINAL APPROVAL	DATE	
ALP: <i>[Signature]</i>	1-70	
ELECT. DES.	DATE	
CHECKED	DATE	
DRAWN	DATE	
EVANGELIST	11-3-69	

THE TECHNICAL MATERIEL CORP.
MAMARONECK, NEW YORK

COVER, CHASSIS, CAP TUNE

NOTICE TO PERSONS RECEIVING THIS DRAWING
THE TECHNICAL MATERIEL CORPORATION claims proprietary right in the material disclosed hereon. This drawing is issued in confidence for engineering information only and may not be reproduced or used to manufacture anything shown hereon without permission from THE TECHNICAL MATERIEL CORPORATION to the user. This drawing is loaned for mutual assistance and is subject to recall at any time.

SIZE	CODE IDENT. NO.	DWG NO.	ISSUE
A	82679	MS5606	A
SCALE		SHEET	OF

APPLICATION

QTY 1
 MODEL USED ON CPALA-10X
 ASS'Y NO. API48

LTR X
 Ø

DESCRIPTION
 EXP RELEASE
 ORIGINAL RELEASE

DATE 9-8-69
 1/14/70

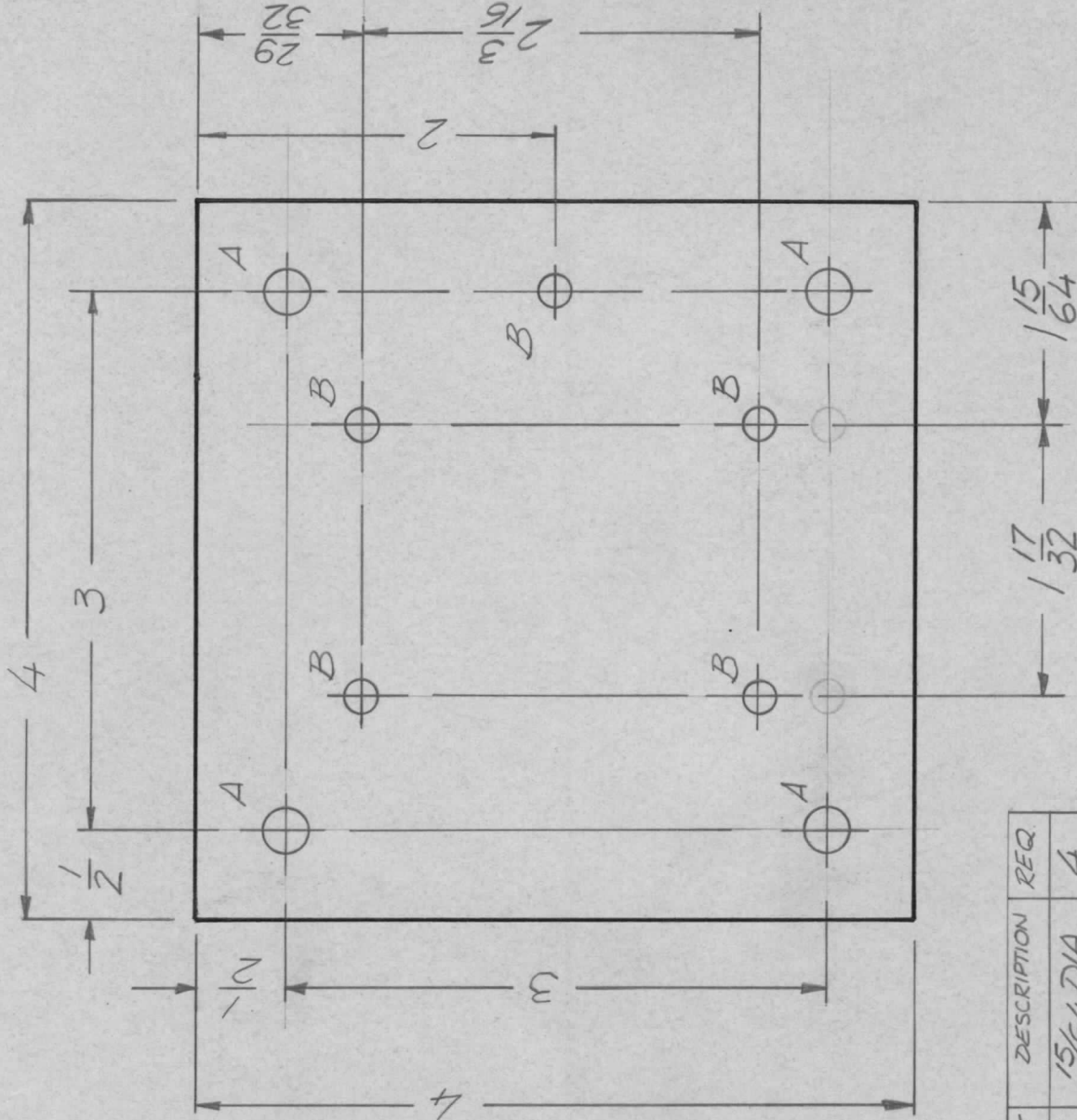
E.M.N. NO.

DRAFT GE
 QJ

CHKD

APPD

REVISIONS



HOLE	DESCRIPTION	REQ.
A	15/64 DIA.	4
B	1/16 DIA.	5

REF: LD2377

REQ'D ITEM	PART NUMBER	DESCRIPTION	SYM.
LIST OF MATERIAL			
THE TECHNICAL MATERIEL CORP. MAMARONECK, NEW YORK			
PLATE, DIODE, MTG.			

REVISION	DATE	BY	DESCRIPTION
1	1-8-70	ALP	MECH. DES.
2	1-8-70	JMU	ELECT. DES.
3	8-3-69	G.EVANGELIS	CHECKED
4	8-3-69	G.EVANGELIS	DRAWN

UNLESS OTHERWISE SPECIFIED DIMENSIONS ARE IN INCHES AND INCLUDE CHEMICALLY APPLIED OR PLATED FINISHES

DECIMALS: .X ± .05, .XX ± .01, .XXX ± .005
 FRACTIONS: 1/64
 TOLS. ANGLES: 0°-30°

MATERIAL: .064 ALUM 5052 H32
 FINISH: S404 YEL. IRIDITE

SIZE	CODE IDENT. NO.	DWG NO.	ISSUE
A	82679	MS 5608	Ø
SCALE	SHEET	OF	

NOTICE TO PERSONS RECEIVING THIS DRAWING
 THE TECHNICAL MATERIEL CORPORATION claims proprietary right in the material disclosed hereon. This drawing is issued in confidence for engineering information only and may not be reproduced or used to manufacture anything shown hereon without permission from THE TECHNICAL MATERIEL CORPORATION to the user. This drawing is loaned for mutual assistance and is subject to recall at any time.

APPLICATION

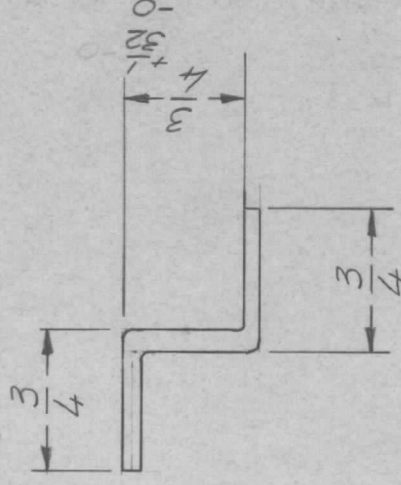
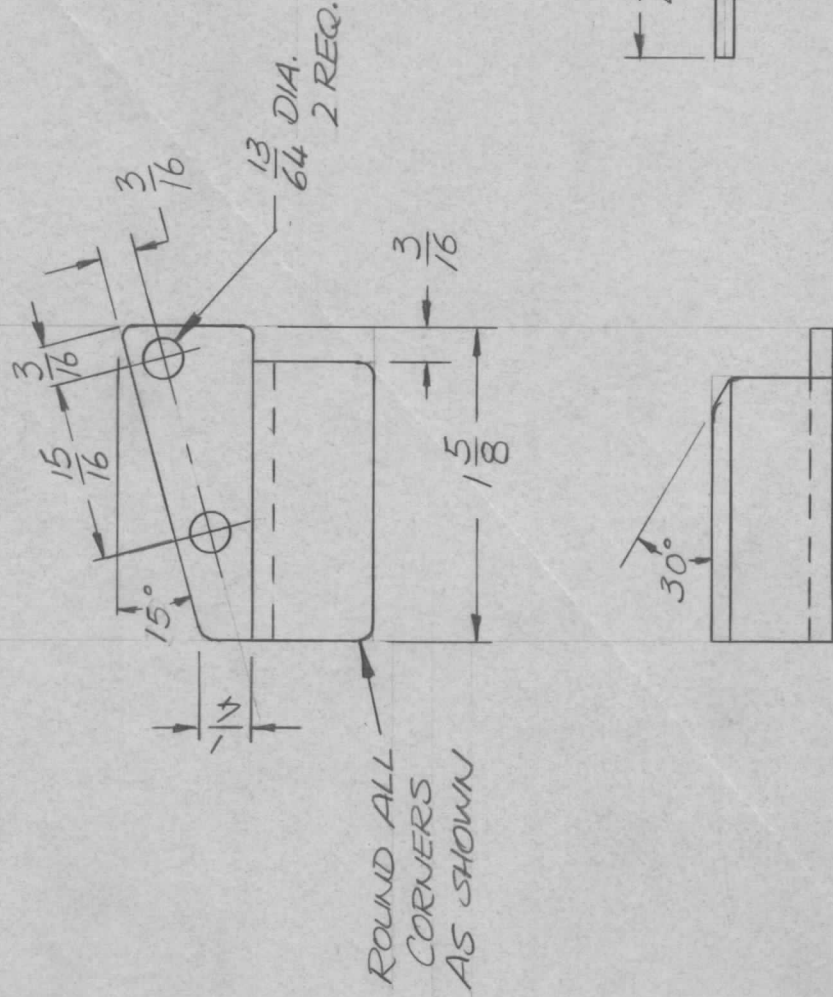
QTY	MODEL USED ON	ASS'Y NO.	LTR
1	PALA 10 K	AS/45	X
	HFLA-10K	AS/45	Ø

DESCRIPTION
EXP RELEASE
ORIGINAL RELEASE

DATE	E.M.N.NO	DRAFT	CHKD	APPD
9/29/69		GE.		
1/20/70		CW.		

REVISIONS

DATE	E.M.N.NO	DRAFT	CHKD	APPD
6:22:72	20727	GE	Ø	Ø



UNLESS OTHERWISE SPECIFIED DIMENSIONS ARE IN INCHES AND INCLUDE CHEMICALLY APPLIED OR PLATED FINISHES

DECIMALS
X ± .05
XX ± .01
.XXX ± .005

FRACTIONS
1/64
TOLS.
ANGLES
0°-30°

MATERIAL
.081 ALUM. 5052 H32

FINISH S 404
YEL. IRIDITE

REQ'D ITEM	PART NUMBER	DESCRIPTION	SYM.
------------	-------------	-------------	------

F. BLUDETTI

FINAL APPROVAL	DATE
Mech. Des.	DATE
Elect. Des.	DATE
CHECKED	DATE
DRAWN	DATE

LIST OF MATERIAL

THE TECHNICAL MATERIEL CORP.
MAMARONECK, NEW YORK

CONTACT SHORTING

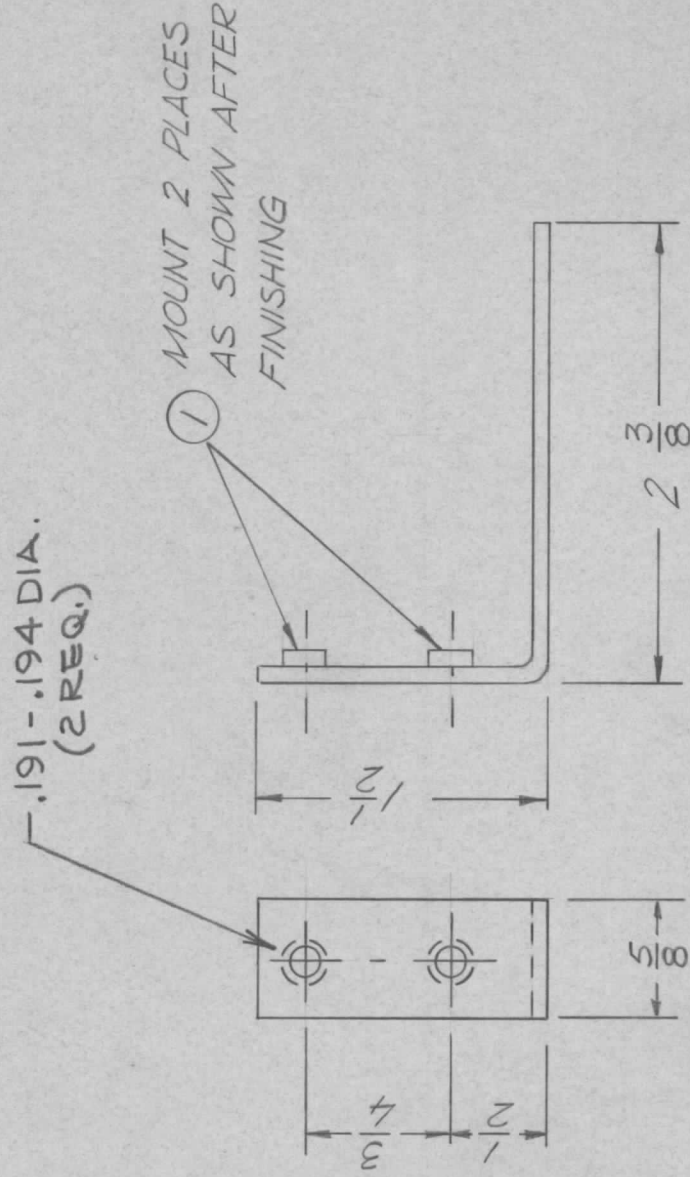
NOTICE TO PERSONS RECEIVING THIS DRAWING
THE TECHNICAL MATERIEL CORPORATION claims proprietary right in the material disclosed hereon. This drawing is issued in confidence for engineering information only and may not be reproduced or used to manufacture anything shown hereon without permission from THE TECHNICAL MATERIEL CORPORATION to the user. This drawing is loaned for mutual assistance and is subject to recall at any time.

SIZE	CODE IDENT. NO.	DWG NO.	ISSUE
A	82679	MS 5613	A
SCALE		SHEET	OF

REVISIONS

APPLICATION

QTY	MODEL USED ON	ASS'Y NO.	LTR	DESCRIPTION	DATE	E.M.N. NO	DRAFT	CHKD	APPD
1	PALA-10K	AX5085	X	EXP RELEASE	10/8/69		GE		
			Ø	ORIGINAL RELEASE	1/11/69		Q		



REQ'D ITEM	PART NUMBER	DESCRIPTION	SYM.
2	NT1290632-6	NUT PLN SPLINE	
F. BUDETTI			
LIST OF MATERIAL			
THE TECHNICAL MATERIEL CORP. MAMARONECK, NEW YORK			
BRACKET SWITCH INTERLOCK			

SIZE	CODE IDENT. NO.	DWG NO.	ISSUE
A	82679	MS 5614	Ø
SCALE	SHEET	OF	

UNLESS OTHERWISE SPECIFIED
DIMENSIONS ARE IN INCHES
AND INCLUDE CHEMICALLY APPLIED
OR PLATED FINISHES

DECIMALS FRACTIONS
X ± .05 1/64
.XX ± .01 TOLS. ANGLES
.XXX ± .005 0°-30'

MATERIAL
.081 5052 H32

FINISH
YEL. IRIDITE

FINAL APPROVAL
ALP. [Signature]

MECH. DES. DATE 1-8-70

ELECT. DES. DATE

CHECKED DATE

DRAWN EVANGELIST DATE 10-8-69

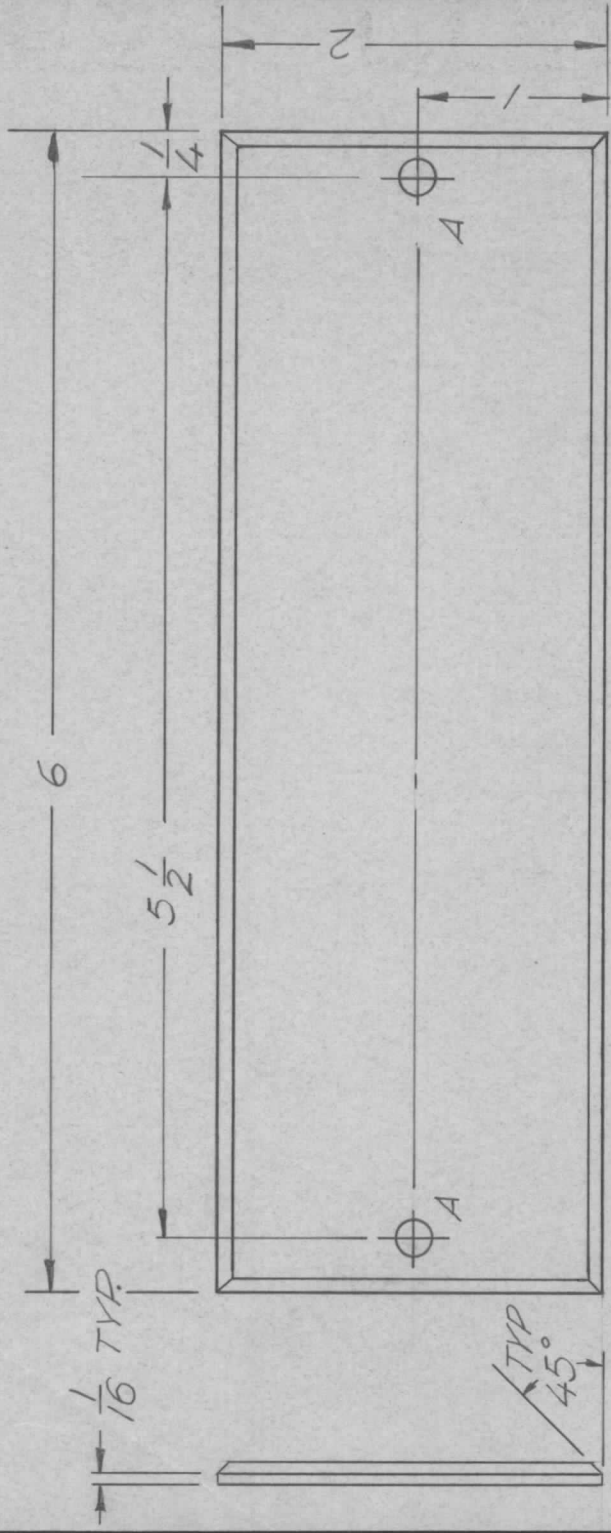
NOTICE TO PERSONS RECEIVING THIS DRAWING
THE TECHNICAL MATERIEL CORPORATION claims proprietary right in the material disclosed hereon. This drawing is issued in confidence for engineering information only and may not be reproduced or used to manufacture anything shown hereon without permission from THE TECHNICAL MATERIEL CORPORATION to the user. This drawing is loaned for mutual assistance and is subject to recall at any time.

APPLICATION

QTY	MODEL USED ON	ASS'Y NO.	LTR
1	AX5086	AX5080	X
			Ø

REVISIONS

DESCRIPTION	DATE	E.M.N. NO	DRAFT	CHKD	APPD
EXP. RELEASE	10-06-68		GE		
ORIGINAL RELEASE FOR PRODUCTION	1/14/70		W		



FRONT

FINISH NOTES

- 1. S404 YELLOW IRIDITE
 - 2. S114-ZINC CHROMATE PRIMER (FRONT & EDGES ONLY)
 - 3. SMOOTH GREY ENAMEL OR PRIME & PAINT PER CUSTOMER SPECIFICATIONS
- (A HOLES 1/164 DIA. 2 REQ.)

UNLESS OTHERWISE SPECIFIED DIMENSIONS ARE IN INCHES AND INCLUDE CHEMICALLY APPLIED OR PLATED FINISHES		REQ'D ITEM	PART NUMBER	DESCRIPTION	SYM.
DECIMALS X ± .05 .XX ± .01 .XXX ± .005		F. BUDETTI		LIST OF MATERIAL	
FRACTIONS 1/64 ANGLES 0°-30'		FINAL APPROVAL	DATE	THE TECHNICAL MATERIEL CORP.	
MATERIAL 2024 T3		ALP. W	1-8-70	MAMARONECK, NEW YORK	
FINISH SEE NOTE		ELECT. DES.	DATE	COVER, FRONT PANEL	
		CHECKED	DATE	DRIVER DRAWER	
		DRAWN EVANGELIST	DATE		
			10-13-68		
NOTICE TO PERSONS RECEIVING THIS DRAWING		SIZE	CODE IDENT. NO.	DWG NO.	ISSUE
THE TECHNICAL MATERIEL CORPORATION claims proprietary right in the material disclosed hereon. This drawing is issued in confidence for engineering information only and may not be reproduced or used to manufacture anything shown hereon without permission from THE TECHNICAL MATERIEL CORPORATION to the user. This drawing is loaned for mutual assistance and is subject to recall at any time.		A	82679	MS5615	Ø
		SCALE	SHEET	OF	

APPLICATION

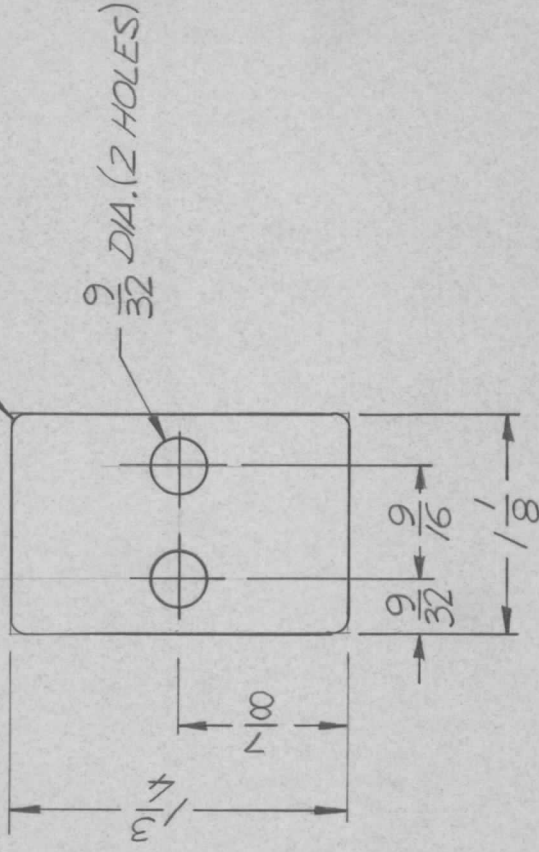
QTY 1
 MODEL USED ON PALA-10K
 ASS'Y NO. AK5084

LTR X
 EXP RELEASE ORIGINAL RELEASE FOR PRODUCTION
 DESCRIPTION

DATE 9-12-69
 1/11/70
 E.M.N.NO.
 DRAFT GE
 APPD

REVISIONS

BREAK ALL CORNERS & EDGES



UNLESS OTHERWISE SPECIFIED DIMENSIONS ARE IN INCHES AND INCLUDE CHEMICALLY APPLIED OR PLATED FINISHES

DECIMALS FRACTIONS
 X ± .05 TOLS. 1/64
 .XX ± .01 ANGLES 0°-30'
 .XXX ± .005

MATERIAL 1/2 ALUM
 5052 8 H32

FINISH S 404
 YEL IRIDITE

REQ'D ITEM F. BUDETTI
 FINAL APPROVAL
 MECH. DES. ALP. JR
 ELECT. DES.
 CHECKED
 DRAWN G. EVANGELIST
 DATE 1-4-70
 DATE 10/16/69
 DATE
 DATE
 DATE 9-12-69

DESCRIPTION LIST OF MATERIAL
 SYM.

THE TECHNICAL MATERIEL CORP.
 MAMARONECK, NEW YORK

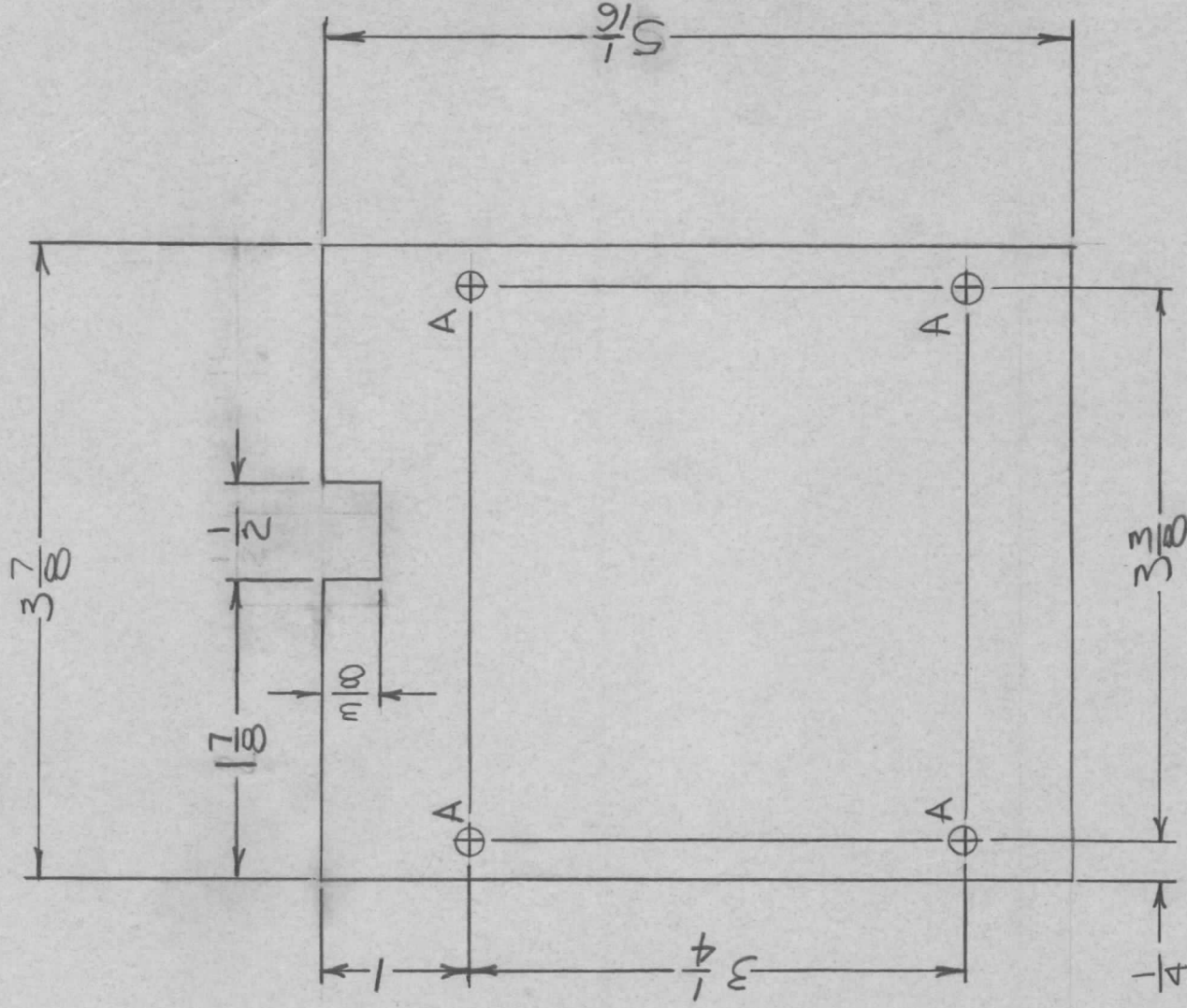
PLATE CONTACT

NOTICE TO PERSONS RECEIVING THIS DRAWING
 THE TECHNICAL MATERIEL CORPORATION claims proprietary right in the material disclosed hereon. This drawing is issued in confidence for engineering information only and may not be reproduced or used to manufacture anything shown hereon without permission from THE TECHNICAL MATERIEL CORPORATION to the user. This drawing is loaned for mutual assistance and is subject to recall at any time.

SIZE A
 CODE IDENT. NO. 82679
 DWG NO. MS5616
 SHEET OF

APPLICATION REVISIONS

QTY	MODEL USED ON	ASS'Y NO.	LTR	DESCRIPTION	DATE	E.M.N.NO	DRAFT	CHKD	APPD
1	PALAIOK	AS145	Ø	ORIG RELEASE PROD	9/1/70		GE		MA



(A HOLES - 3/16 DIA. - 4 REQ.)

UNLESS OTHERWISE SPECIFIED DIMENSIONS ARE IN INCHES AND INCLUDE CHEMICALLY APPLIED OR PLATED FINISHES		REQ'D ITEM	PART NUMBER	DESCRIPTION	SYM.
DECIMALS X ± .05 XX ± .01 XXX ± .005		F. BUDETTI		LIST OF MATERIAL	
FRACTIONS 1/64		FINAL APPROVAL K. W. B. F. B.	DATE 9-6-70	THE TECHNICAL MATERIEL CORP.	
ANGLES 0°-30°		MECH. DES. ALP.	DATE 1-70	MAMARONECK, NEW YORK	
MATERIAL .051		ELECT. DES.	DATE	COVER ROT. SW. WRAPAROUND	
ALUM. 5052-H32		CHECKED	DATE		
FINISH S404		DRAWN ALP.	DATE 1-70		
VEL. IRIDITE					

NOTICE TO PERSONS RECEIVING THIS DRAWING
 THE TECHNICAL MATERIEL CORPORATION claims proprietary right in the material disclosed hereon. This drawing is issued in confidence for engineering information only and may not be reproduced or used to manufacture anything shown hereon without permission from THE TECHNICAL MATERIEL CORPORATION to the user. This drawing is loaned for mutual assistance and is subject to recall at any time.

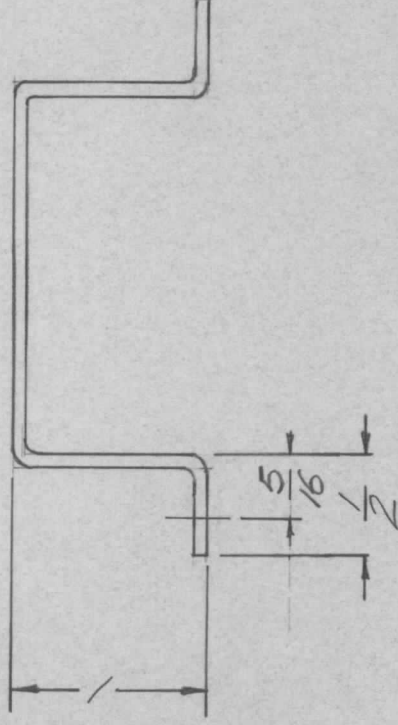
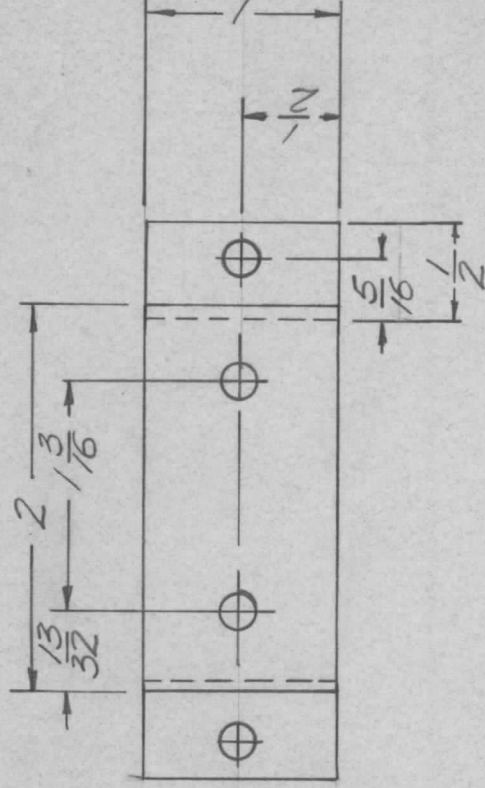
SIZE A	CODE IDENT. NO. 82679	DWG NO. MS 5619	ISSUE Ø
SCALE	SHEET	OF	

REVISIONS

APPLICATION

QTY	MODEL USED ON	ASS'Y NO.	LTR	DESCRIPTION	DATE	E.M.N. NO	DRAFT	CHKD	APPD
1	PALAD-10K	BMAS84	X	EXP RELEASE	1/1/69		GE		
			Ø	ORIGINAL RELEASE FOR PRODUCTION	1/4/70		W		

ALL HOLES $\frac{11}{64}$ DIA.



REQ'D ITEM	PART NUMBER	DESCRIPTION	SYM.
F. BUDETTI		LIST OF MATERIAL	
FINAL APPROVAL	DATE	THE TECHNICAL MATERIEL CORP.	
<i>[Signature]</i>	7-8-70	MAMARONECK, NEW YORK	
MECH. DES.	DATE		
ALP. INC	1-8-70		
ELECT. DES.	DATE		
CHECKED	DATE		
DRAWN	DATE	BRACKET, ZENER MTG.	
EVANGELIST	1/1/70		

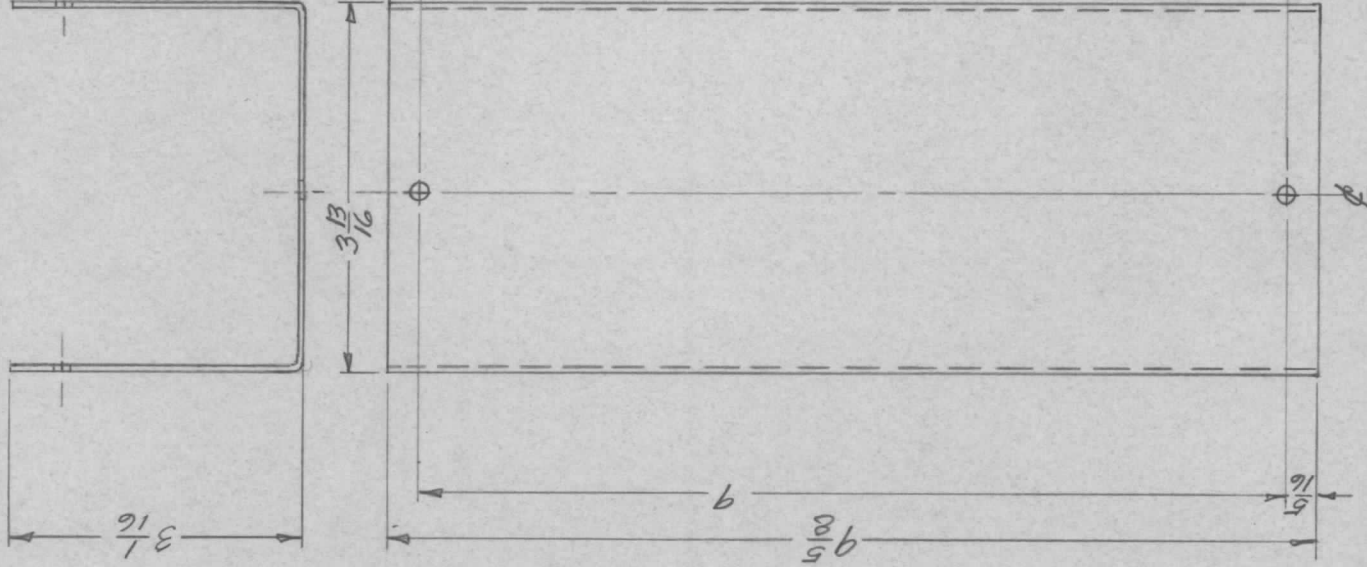
SIZE	CODE IDENT. NO.	DWG NO.	ISSUE
A	82679	MS5620	Ø
SCALE	SHEET	OF	
1:1			

NOTICE TO PERSONS RECEIVING THIS DRAWING
 THE TECHNICAL MATERIEL CORPORATION claims proprietary right in the material disclosed hereon. This drawing is issued in confidence for engineering information only and may not be reproduced or used to manufacture anything shown hereon without permission from THE TECHNICAL MATERIEL CORPORATION to the user. This drawing is loaned for mutual assistance and is subject to recall at any time.

APPLICATION

REVISIONS

QTY	MODEL USED ON	ASS'Y NO.	LTR	DESCRIPTION	DATE	E.M.N.NO	DRAFT	CHKD	APPD
1	GPTR 10K	AF109	Ø	ORIGINAL RELEASE	5-3-73		CS		



NOTE:

1. USE MATERIAL THICKNESS FOR MAXIMUM RADIUS ON ALL BENDS.
2. ALL ANGULAR BENDS 90 DEGREES.
3. REMOVE ALL BURRS AND SHARP EDGES.

5/32 DIA (6 HOLES)

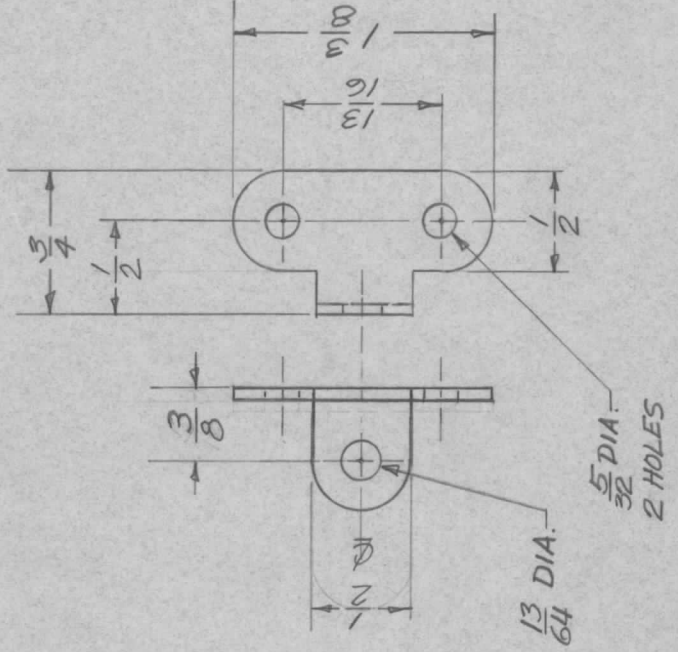
OPPOSITE SIDE IDENTICAL

PERFORATED METAL
1/8 DIA. ON 3/16 CENTERS
STAGGERED.

REQ'D ITEM	PART NUMBER	DESCRIPTION	SYM.
LIST OF MATERIAL			
THE TECHNICAL MATERIEL CORP. MAMARONECK, NEW YORK			
COVER, PERFORATED			
FINAL APPROVAL	DATE	SIZE	CODE IDENT. NO.
MECH. DES.	DATE	A	82679
ELECT. DES.	DATE	SCALE	DWG NO.
CHECKED	DATE	1/2	MS 5622
DRAWN	DATE	ISSU	
J. ANGER	11/19/69		

NOTICE TO PERSONS RECEIVING THIS DRAWING
 THE TECHNICAL MATERIEL CORPORATION claims proprietary right in the material disclosed hereon. This drawing is issued in confidence for engineering information only and may not be reproduced or used to manufacture anything shown hereon without permission from THE TECHNICAL MATERIEL CORPORATION to the user. This drawing is loaned for mutual assistance and is subject to recall at any time.

QTY	MODEL USED ON	ASS'Y NO.	LTR	DESCRIPTION	DATE	E.M.N.NO	DRAFT	CHKD	APPD
2	GPTR 10K	AF109	Ø	ORIGINAL RELEASE	5/3/73		C.S.		



UNLESS OTHERWISE SPECIFIED:

1. USE MATERIAL THICKNESS FOR MAXIMUM RADIUS ON ALL BENDS.
2. ALL ANGULAR BENDS 90 DEGREES.
3. REMOVE ALL BURRS AND SHARP EDGES.

REQ'D ITEM	PART NUMBER	DESCRIPTION	SYM.
LIST OF MATERIAL			
THE TECHNICAL MATERIEL CORP. MAMARONECK, NEW YORK			
<i>BRACKET, CAPACITOR M79.</i>			
FINAL APPROVAL	DATE	SIZE	CODE IDENT. NO.
<i>[Signature]</i>	DATE	A	82679
MECH. DES.	DATE	SCALE	DWG NO.
<i>J. ANGER</i>	2/4/69	1:1	MS 5623
ELECT. DES.	DATE		
CHECKED	DATE		
DRAWN	DATE		
<i>J. ANGER</i>	11/19/69		

NOTICE TO PERSONS RECEIVING THIS DRAWING

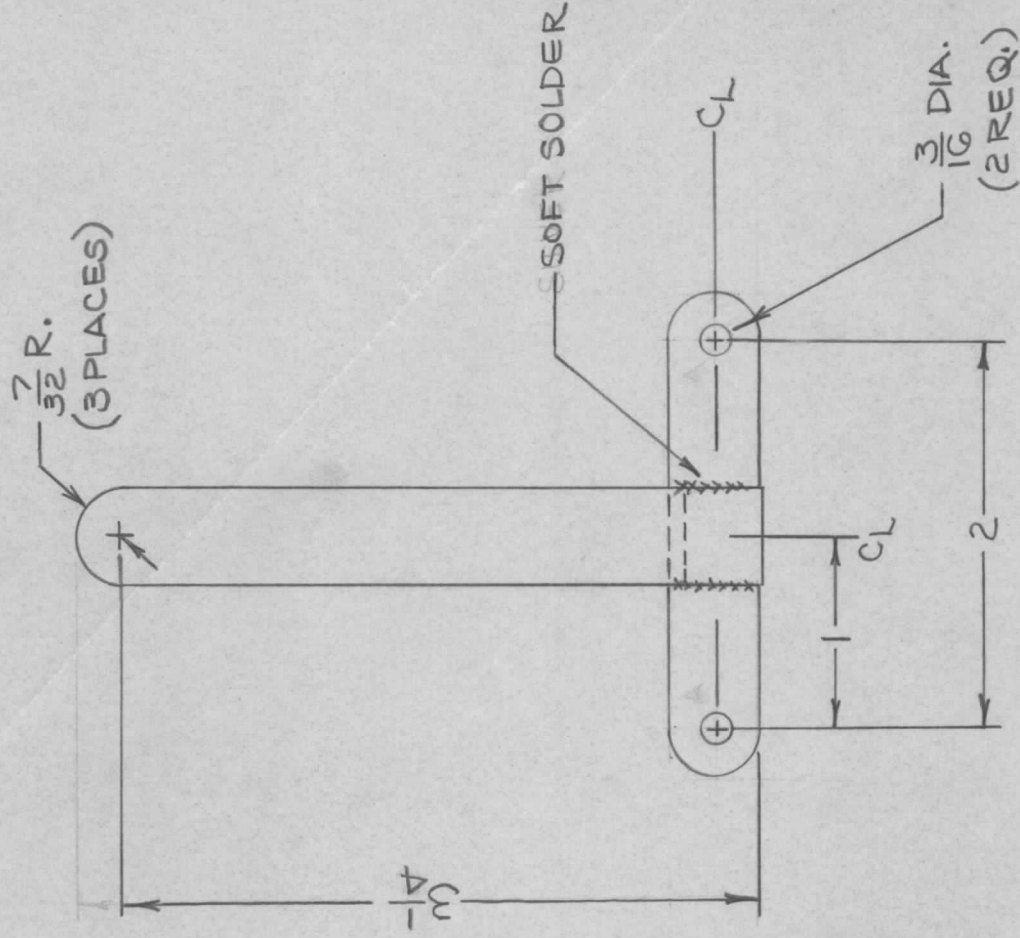
THE TECHNICAL MATERIEL CORPORATION claims proprietary right in the material disclosed hereon. This drawing is issued in confidence for engineering information only and may not be reproduced or used to manufacture anything shown hereon without permission from THE TECHNICAL MATERIEL CORPORATION to the user. This drawing is loaned for mutual assistance and is subject to recall at any time.

ISSUE *8*

SHEET *1* OF *1*

APPLICATION REVISIONS

QTY	MODEL USED ON	ASS'Y NO.	LTR	DESCRIPTION	DATE	E.M.N.NO	DRAFT	CHKD	APPD
1	PALAI0K	AX5084	Ø	ORIGINAL RELEASE	1/26/70		CU		



REQ'D ITEM	PART NUMBER	DESCRIPTION	SYM.
F. BUDETTI		LIST OF MATERIAL	
FINAL APPROVAL	DATE	THE TECHNICAL MATERIEL CORP.	
Mech. DES. ALP	1-70	MAMARONECK, NEW YORK	
ELECT. DES.	DATE	STRAP, T CONN.	
CHECKED	DATE		
DRAWN ALP	DATE		
	10-9-69		

SIZE	CODE IDENT. NO.	DWG NO.	ISSUE
A	82679	MS5628	Ø
SCALE	SHEET	OF	

UNLESS OTHERWISE SPECIFIED DIMENSIONS ARE IN INCHES AND INCLUDE CHEMICALLY APPLIED OR PLATED FINISHES

DECIMALS FRACTIONS
 X ± .05 TOLS. 1/64
 XX ± .01 ANGLES 0°-30'
 .XXX ± .005

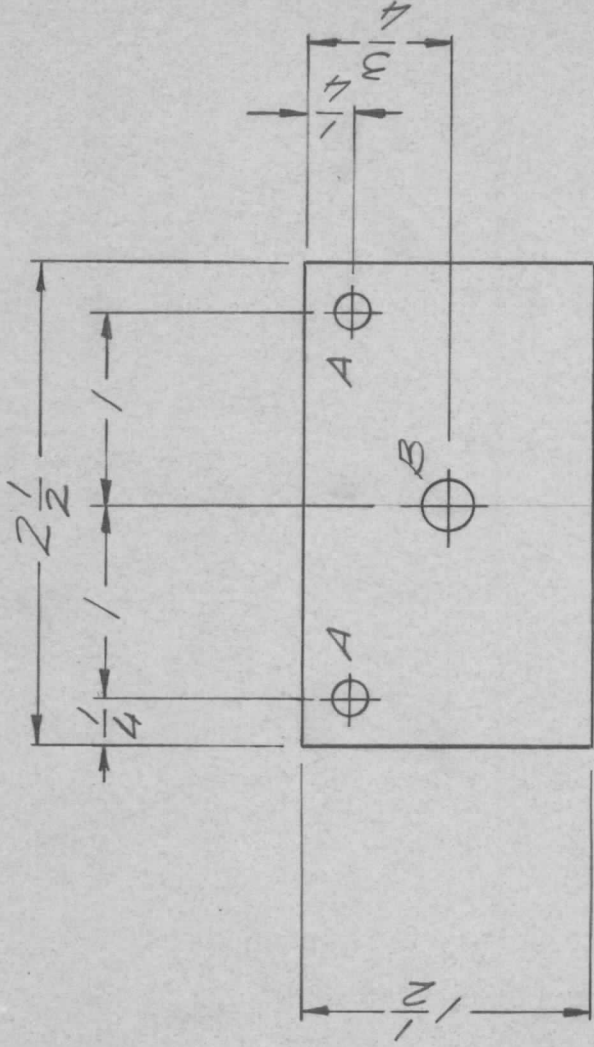
MATERIAL .030 X 7/16 COPPER, SOFT
 FINISH S245 SIL. PL.
 S423 SIL. KOTE

NOTICE TO PERSONS RECEIVING THIS DRAWING
 THE TECHNICAL MATERIEL CORPORATION claims proprietary right in the material disclosed hereon. This drawing is issued in confidence for engineering information only and may not be reproduced or used to manufacture anything shown hereon without permission from THE TECHNICAL MATERIEL CORPORATION to the user. This drawing is loaned for mutual assistance and is subject to recall at any time.

APPLICATION

REVISIONS

MODEL USED ON	ASS'Y NO.	LTR	DESCRIPTION	DATE	E.M.N.NO	DRAFT	CHKD	APPD
PALAIOK		X	EXP RELEASE	1-7-70		GE		
		Ø	ORIG RELEASE FOR PROD	5/24/70		CV		



HOLE	DESCRIPTION	QTY.
A	1/64 DIA.	2
B	1/4 DIA.	1

REQ'D ITEM	PART NUMBER	DESCRIPTION	SYM.
LIST OF MATERIAL			
THE TECHNICAL MATERIEL CORP. MAMARONECK, NEW YORK			
PLATE JACK MTG.			

UNLESS OTHERWISE SPECIFIED DIMENSIONS ARE IN INCHES AND INCLUDE CHEMICALLY APPLIED OR PLATED FINISHES	SIZE	CODE IDENT. NO.	DWG NO.	ISSUE
DECIMALS .05 X ± .01 .XX ± .01 .XXX ± .005	A	82679	MS 5629	Ø
FRACTIONS 1/64 TOLS. ANGLES 0°-30°	SCALE		SHEET	OF
MATERIAL: 063 ALUM				
FINISH 5052-H32 YEL. IRIDITE				

NOTICE TO PERSONS RECEIVING THIS DRAWING
 THE TECHNICAL MATERIEL CORPORATION claims proprietary right in the material disclosed hereon. This drawing is issued in confidence for engineering information only and may not be reproduced or used to manufacture anything shown hereon without permission from THE TECHNICAL MATERIEL CORPORATION to the user. This drawing is loaned for mutual assistance and is subject to recall at any time.

APPLICATION

QTY
 MODEL USED ON
 AX5085
 PALA-10K

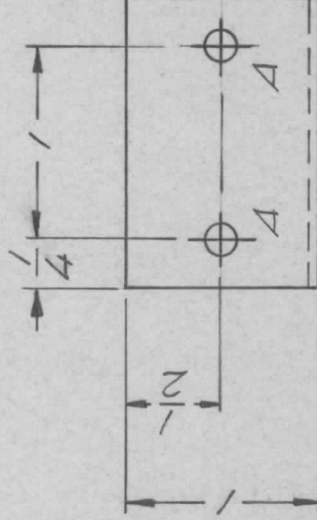
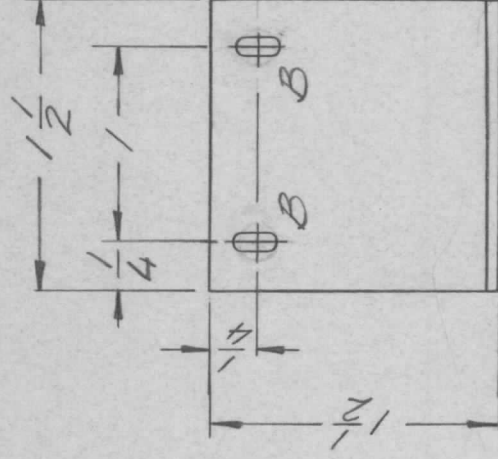
ASS'Y NO.
 X
 Ø

DESCRIPTION
 EXP RELEASE
 ORIGINAL RELEASE

DATE
 1-9-70
 1/14/70

E.M.N. NO.
 DRAFT
 GE
 CW

REVISIONS



HOLE A 13/64 DIA 2 REQ.

HOLE B 1/8 X 1/4 SLOT 2 REQ.

UNLESS OTHERWISE SPECIFIED DIMENSIONS ARE IN INCHES AND INCLUDE CHEMICALLY APPLIED OR PLATED FINISHES

DECIMALS
 X ± .05
 XX ± .01
 XXX ± .005

FRACTIONS
 1/64
 TOLS.
 ANGLES
 0°-30°

MATERIAL .064

FINISH YEL. IRIDITE

REQ'D ITEM	PART NUMBER	DESCRIPTION	SYM.
F. BUDETTI			
FINAL APPROVAL	DATE	LIST OF MATERIAL	
<i>ALP.</i>	H3-70	THE TECHNICAL MATERIEL CORP.	
MECH. DES.	DATE	MAMARONECK, NEW YORK	
ELECT. DES.	DATE	BRACKET, MICRO SW. MTG.	
CHECKED	DATE		
DRAWN	DATE		
<i>EVANGELIST</i>	1-13-70		

NOTICE TO PERSONS RECEIVING THIS DRAWING
 THE TECHNICAL MATERIEL CORPORATION claims proprietary right in the material disclosed hereon. This drawing is issued in confidence for engineering information only and may not be reproduced or used to manufacture anything shown hereon without permission from THE TECHNICAL MATERIEL CORPORATION to the user. This drawing is loaned for mutual assistance and is subject to recall at any time.

SIZE
 A

CODE IDENT. NO.

82679

DWG NO.

MS 5632

ISSUE

Ø

SCALE

SHEET

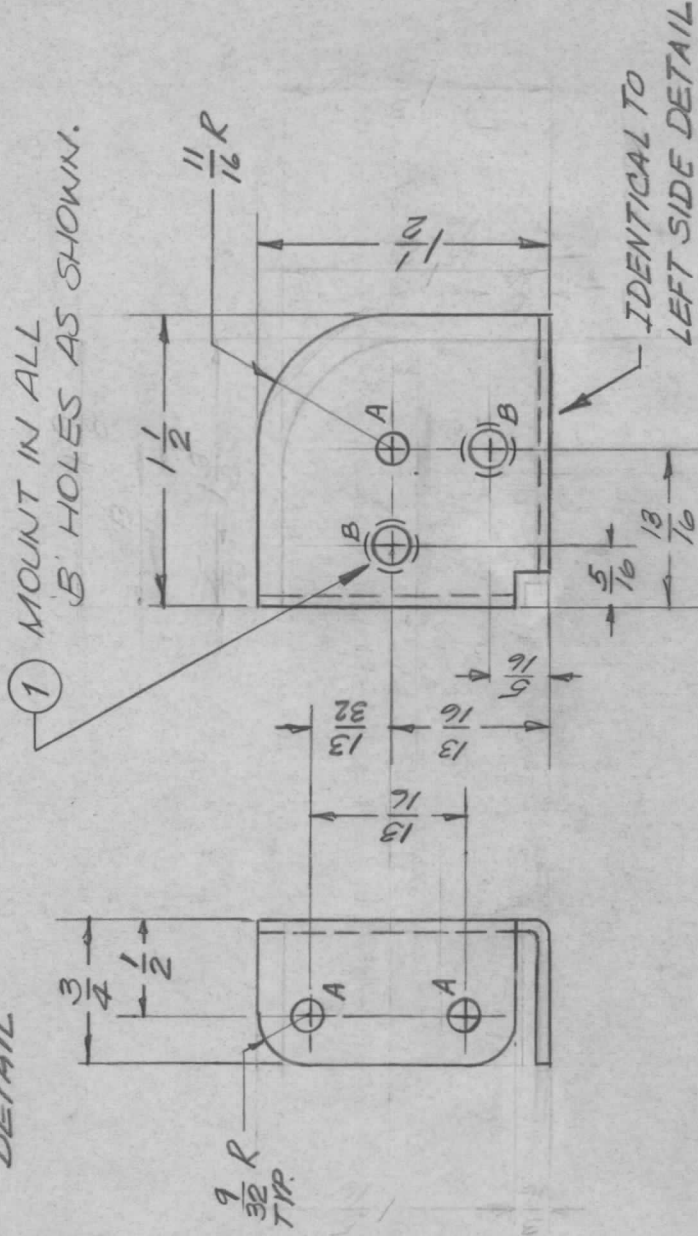
OF

APPLICATION

QTY	MODEL USED ON	ASS'Y NO.	LTR	DESCRIPTION	DATE	E.M.N.NO	DRAFT	CHKD	APPD
7	AF 110		Ø	ORIG RELEASE FOR PROD	5/24/70		CV		
			A	ADD. NOTE IT. 1 MTG.	8-2-72	20771	GE	g	g
			B	PART NO. OF ITEM 1 CHANGED	1-25-78	2-16-22	K.P.	J.B.	*

REVISIONS

LEFT SIDE
DETAIL



HOLE	DESCRIPTION	REQ'D
A	5/32 DIA.	5
B	.221-.224 DIA	2

2	1	NT-129-832-4	NUT, SPLINE	B
REQ'D ITEM	PART NUMBER	DESCRIPTION	SYM.	
F. BIUDETTI LIST OF MATERIAL				
FINAL APPROVAL	DATE	THE TECHNICAL MATERIEL CORP.		
Mech. DES.	DATE	MAMARONECK, NEW YORK		
ELECT. DES.	DATE	BRACKET, CAP. MTG.		
CHECKED	DATE			
DRAWN	DATE			

NOTICE TO PERSONS RECEIVING THIS DRAWING
 THE TECHNICAL MATERIEL CORPORATION claims proprietary right in the material disclosed hereon. This drawing is issued in confidence for engineering information only and may not be reproduced or used to manufacture anything shown hereon without permission from THE TECHNICAL MATERIEL CORPORATION to the user. This drawing is loaned for mutual assistance and is subject to recall at any time.

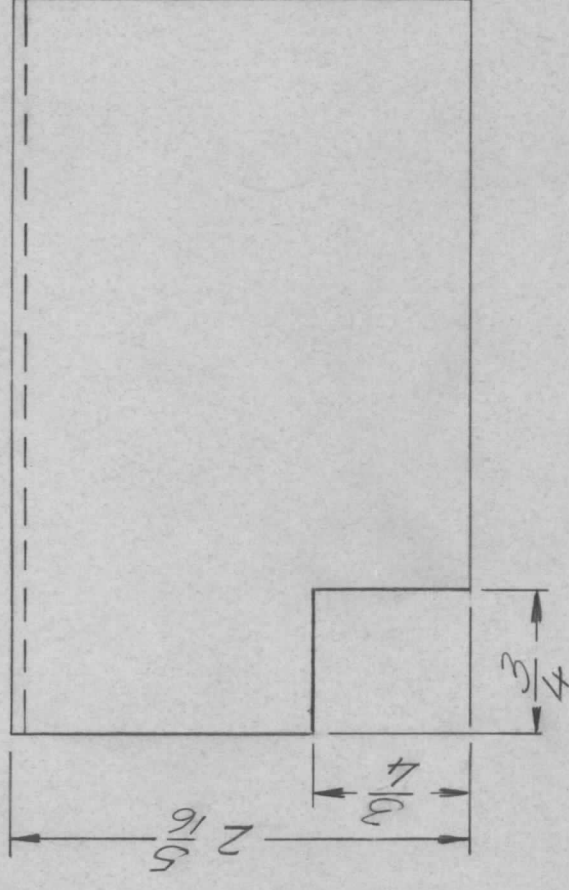
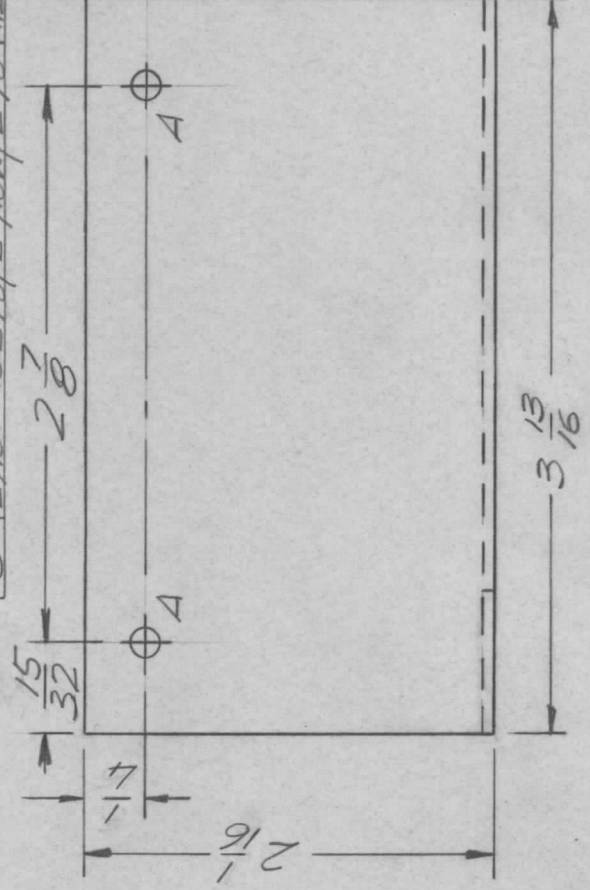
SIZE	CODE IDENT. NO.	DWG NO.	ISSUE
A	82679	M&S-5636	B
SCALE	1:1	SHEET	1 OF 1

APPLICATION

QTY	MODEL USED ON	ASS'Y NO.	LTR	DESCRIPTION	DATE	E.M.N. NO	DRAFT	CHKD	APPD
1	PALA 10 K		X	EXP. RELEASE	2/19/70		GE		

REVISIONS

QTY	MODEL USED ON	ASS'Y NO.	LTR	DESCRIPTION	DATE	E.M.N. NO	DRAFT	CHKD	APPD
			Ø	ORIGINAL RELEASE	2/16/70		GE		
			A	ADD. 3/4 x 13/16 NOTCH	6/3/70	19875	KL		FE
			B	2 1/16 WAS 2 1/8 / 2 5/16 W / 2 3/8	4/25/70	21018	CE		SJ



UNLESS OTHERWISE SPECIFIED DIMENSIONS ARE IN INCHES AND INCLUDE CHEMICALLY APPLIED OR PLATED FINISHES

DECIMALS ± .05
XX ± .01
.XXX ± .005

FRACTIONS 1/64
TOLS. ANGLES 9°-30'

MATERIAL, 051 ALUM
FINISH S404
YEL. IRIDITE

REQ'D ITEM	PART NUMBER	DESCRIPTION	SYM.
------------	-------------	-------------	------

F. BUDETTI

FINAL APPROVAL *DB* DATE 2/19/70

MECH. DES. *AP* DATE 2/19/70

ELECT. DES. DATE

CHECKED DATE

DRAWN *EVANGELIST* DATE 2/19/70

LIST OF MATERIAL

THE TECHNICAL MATERIEL CORP.
MAMARONECK, NEW YORK

DRIVE UP COVER

NOTICE TO PERSONS RECEIVING THIS DRAWING
THE TECHNICAL MATERIEL CORPORATION claims proprietary right in the material disclosed hereon. This drawing is issued in confidence for engineering information only and may not be reproduced or used to manufacture anything shown hereon without permission from THE TECHNICAL MATERIEL CORPORATION to the user. This drawing is loaned for mutual assistance and is subject to recall at any time.

SIZE	CODE IDENT. NO.	DWG NO.	ISSUE
A	82679	MS 5638	B

SCALE *NTS* SHEET OF

APPLICATION

QTY
MODEL USED ON
PALA-10K AP148

ASS'Y NO.
X
Ø

DESCRIPTION
EXP. RELEASE
ORIGINAL RELEASE

DATE
5/10/70
5/13/71

E.M.N.NO.

DRAFT
[Signature]

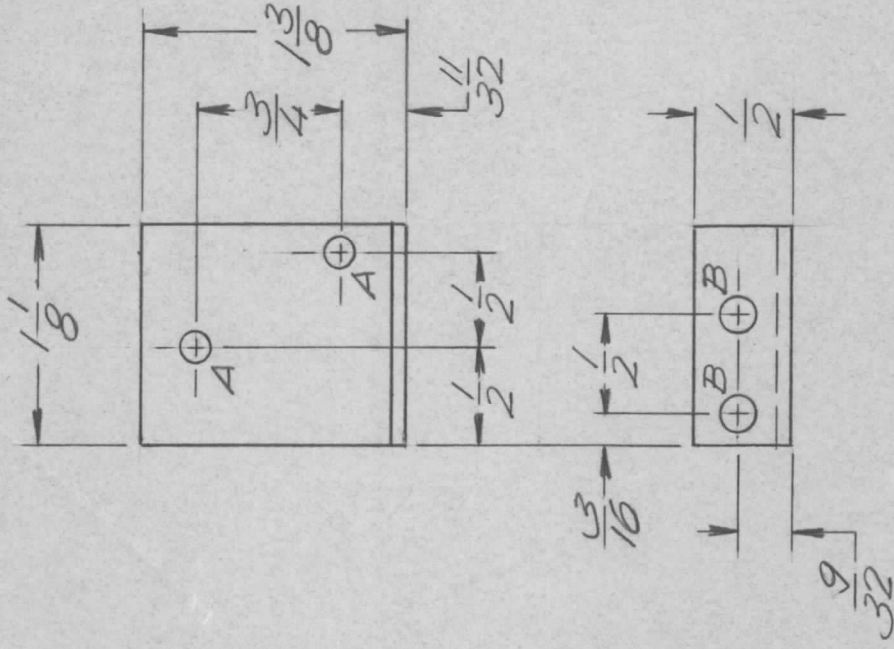
CHKD

APPD
[Signature]

REVISIONS

HOLE LEGEND:

A ~ 9/64 DIA. (2 REQ.)
B ~ 11/64 DIA. (2 REQ.)



NOTE:

REMOVE ALL BURRS AND SHARP EDGES.

UNLESS OTHERWISE SPECIFIED
DIMENSIONS ARE IN INCHES
AND INCLUDE CHEMICALLY APPLIED
OR PLATED FINISHES

DECIMALS
X ± .05
.XX ± .01
.XXX ± .005

FRACTIONS
1/64
ANGLES
0°-30°

TOLS.
MATERIAL: 063 ALLM
5052 - H32
FINISH S404
YELL. IRIDITE

REQ'D ITEM
FINAL APPROVAL [Signature]
MECH. DES. [Signature]
ELECT. DES.
CHECKED
DRAWN [Signature]

PART NUMBER

DATE
3 Feb 71
5/8/70
DATE
DATE
DATE

DESCRIPTION
LIST OF MATERIAL
THE TECHNICAL MATERIEL CORP.
MAMARONECK, NEW YORK
MTG. BRKKT, SW. AIR

SYM.

NOTICE TO PERSONS RECEIVING THIS DRAWING
THE TECHNICAL MATERIEL CORPORATION claims proprietary right in the material disclosed hereon. This drawing is issued in confidence for engineering information only and may not be reproduced or used to manufacture anything shown hereon without permission from THE TECHNICAL MATERIEL CORPORATION to the user. This drawing is loaned for mutual assistance and is subject to recall at any time.

SIZE
A

CODE IDENT. NO.
82679

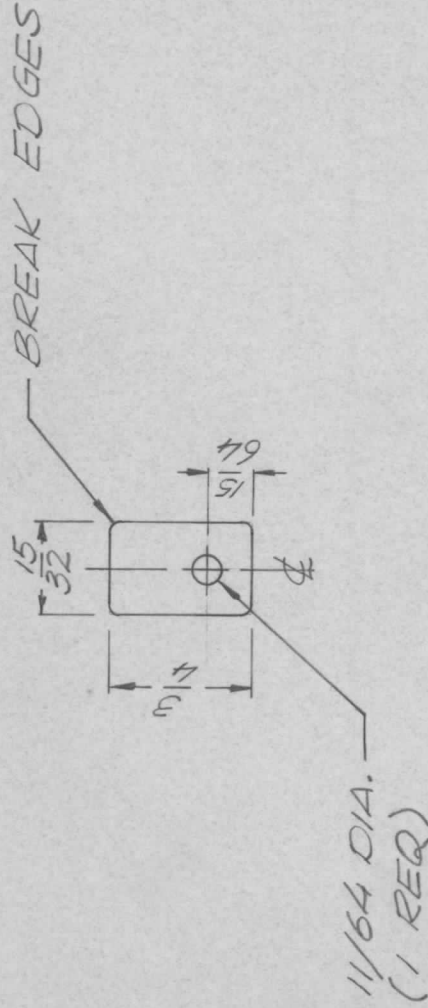
DWG NO.
MS 5640

ISSUE
Ø

SCALE
1:1

SHEET
OF

APPLICATION			REVISIONS						
QTY	MODEL USED ON	ASS'Y NO.	LTR	DESCRIPTION	DATE	E.M.N.NO	DRAFT	CHKD	APPD
2	HFLA-10K	AX513	X	EXP. RELEASE	5/28/70		OE		
			Ø	ORIG. RELEASE FOR PROD	6/11/70		CV		



FINISH NOTES:

1. S404 - IRIDITE 14-2 AL-COAT.
 2. S114 - ZINC CHROMATE PRIMER } FRONT AND
 3. S115 - SMOOTH GRAY ENAMEL } EDGES ONLY
- OR
- PRIME AND PAINT PER CUSTOMER'S SPECIFICATIONS

UNLESS OTHERWISE SPECIFIED DIMENSIONS ARE IN INCHES AND INCLUDE CHEMICALLY APPLIED OR PLATED FINISHES	REQ'D ITEM	PART NUMBER	DESCRIPTION	SYM.
DECIMALS	F. BUDETTI		LIST OF MATERIAL	
X ± .05	FINAL APPROVAL		THE TECHNICAL MATERIEL CORP.	
.XX ± .01	DATE	5/28/70	MAMARONECK, NEW YORK	
.XXX ± .005	MECH. DES.			
	ELECT. DES.			
	CHECKED			
	DRAWN	EVANGELIST	TAB, SERVO MTG.	

SIZE	CODE IDENT. NO.	DWG NO.	ISSUE
A	82679	MS 5641	Ø
SCALE	SHEET	OF	
1:1			

NOTICE TO PERSONS RECEIVING THIS DRAWING
 THE TECHNICAL MATERIEL CORPORATION claims proprietary right in the material disclosed hereon. This drawing is issued in confidence for engineering information only and may not be reproduced or used to manufacture anything shown hereon without permission from THE TECHNICAL MATERIEL CORPORATION to the user. This drawing is loaned for mutual assistance and is subject to recall at any time.

APPLICATION

QTY MODEL USED ON ASS'Y NO. LTR

2 APP-18

P

REVISIONS

DESCRIPTION

ORIGINAL RELEASE

DATE

8/27/70

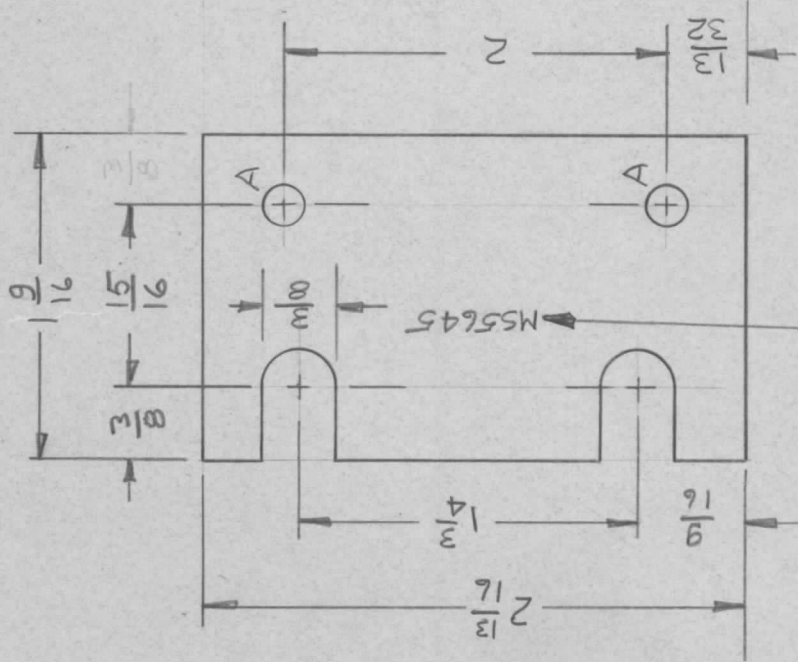
E.M.N.NO

DRAFT

C.W.

CHKD

APPD



MARK TMC PART NUMBER
1/8 HIGH GOTHIC WITH LATEST
REVISION LETTER

UNLESS OTHERWISE SPECIFIED
DIMENSIONS ARE IN INCHES
AND INCLUDE CHEMICALLY APPLIED
OR PLATED FINISHES

DECIMALS .05
.XX ± .01
.XXX ± .005

FRACTIONS 1/64

TOLS.

ANGLES

9°-30°

MATERIAL .064 ALUM
5052-H32

FINISH

S404 YEL IRIDITE

REQ'D ITEM

BUDETTI

PART NUMBER

DESCRIPTION

SYM.

FINAL APPROVAL

DATE

MECH. DES.

ELECT. DES.

CHECKED

DRAWN

DATE

DATE

DATE

DATE

DATE

LIST OF MATERIAL

THE TECHNICAL MATERIEL CORP.

MAMARONECK, NEW YORK

PLATE, SHIM

NOTICE TO PERSONS RECEIVING THIS DRAWING

THE TECHNICAL MATERIEL CORPORATION claims proprietary right in the material disclosed hereon. This drawing is issued in confidence for engineering information only and may not be reproduced or used to manufacture anything shown hereon without permission from THE TECHNICAL MATERIEL CORPORATION to the user. This drawing is loaned for mutual assistance and is subject to recall at any time.

SIZE

A

CODE IDENT. NO.

82679

DWG NO.

MS5645

ISSUE

Ø

SCALE

SHEET

OF

APPLICATION

QTY 1
 MODEL USED ON SYM 1200
 ASS'Y NO. AX5121

LTR X
 Ø

DESCRIPTION EXP RELEASE
 ORIGINAL RELEASE

DATE 8/21/70
 9/17/70

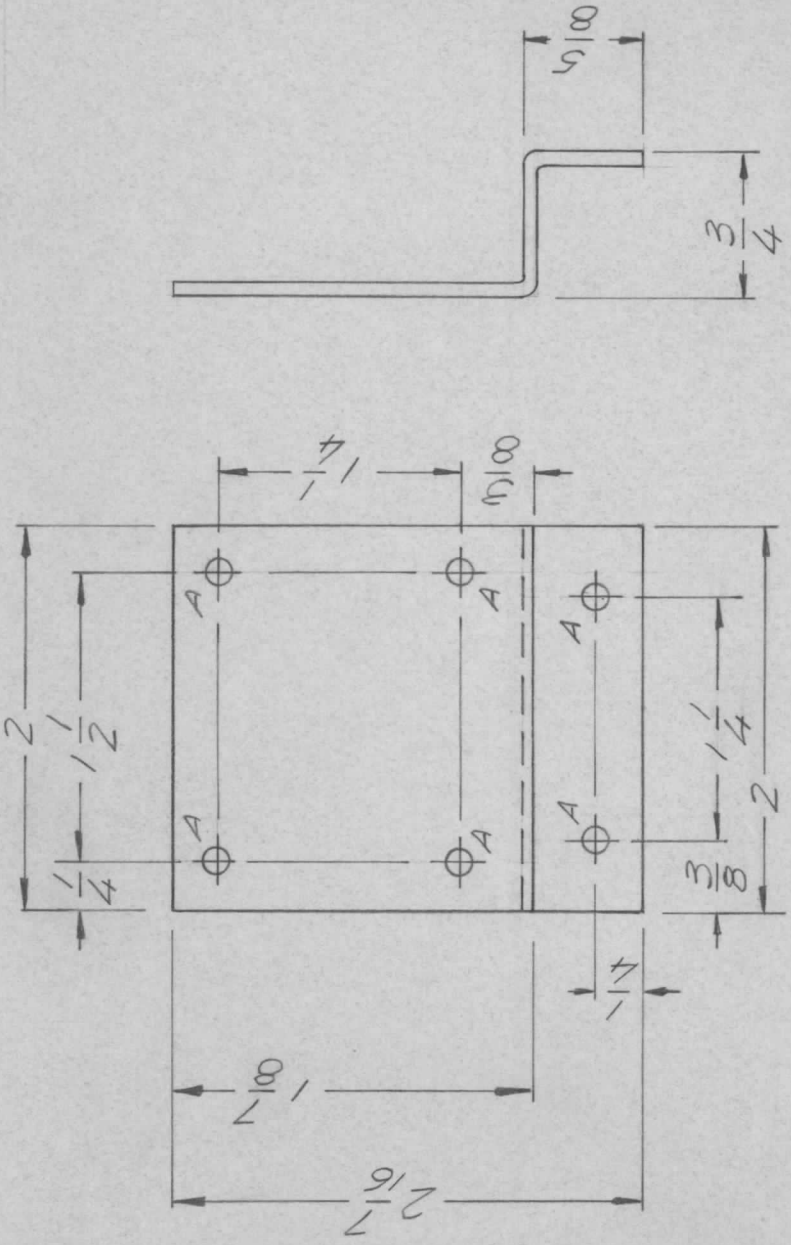
E.M.N. NO.

DRAFT GE
 CW

CHKD
 APPD

REVISIONS

HOLE DESCRIPTION QTY.
 A 11/64 DIA. 6



UNLESS OTHERWISE SPECIFIED:

1. USE MATERIAL THICKNESS FOR MAXIMUM RADIUS ON ALL BENDS.
2. ALL ANGULAR BENDS 90 DEGREES.
3. REMOVE ALL BURRS AND SHARP EDGES.
4. MOUNT INSERTS AFTER FINISHING.

UNLESS OTHERWISE SPECIFIED DIMENSIONS ARE IN INCHES AND INCLUDE CHEMICALLY APPLIED OR PLATED FINISHES

DECIMALS .X ± .05
 .XX ± .01
 .XXX ± .005

FRACTIONS 1/64
 TOLS. ANGLES 0°-30°

MATERIAL 5052 H32
 .0063 ALUM

FINISH IRIDITE

REQ'D ITEM	PART NUMBER	DESCRIPTION	SYM.
F. BLUDETTI LIST OF MATERIAL			
FINAL APPROVAL	DATE 17 SEP 70		
MECH. DES.	DATE 8/24/70		
ELECT. DES.	DATE		
CHECKED	DATE		
DRAWN	DATE 8/21/70		

DESCRIPTION THE TECHNICAL MATERIEL CORP.
 MAMARONECK, NEW YORK

BRACKET, MTG., RELAY

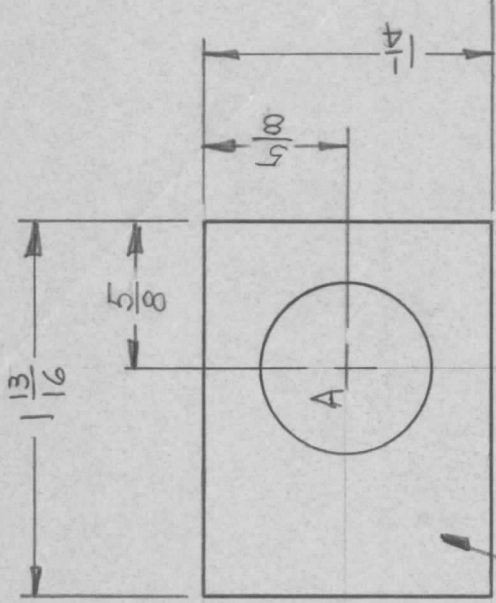
NOTICE TO PERSONS RECEIVING THIS DRAWING
 THE TECHNICAL MATERIEL CORPORATION claims proprietary right in the material disclosed hereon. This drawing is issued in confidence for engineering information only and may not be reproduced or used to manufacture anything shown hereon without permission from THE TECHNICAL MATERIEL CORPORATION to the user. This drawing is loaned for mutual assistance and is subject to recall at any time.

SIZE A
 CODE IDENT. NO. 82679
 DWG NO. MS 5651
 SCALE 1:1
 SHEET OF

APPLICATION

REVISIONS

QTY	MODEL USED ON	ASS'Y NO.	LTR	DESCRIPTION	DATE	E.M.N.NO	DRAFT	CHKD	APPD
2	API49		Ø	ORIGINAL RELEASE	9/1/70		<i>BJ</i>		



A ~ 7/8 DIA. 1 REQ.

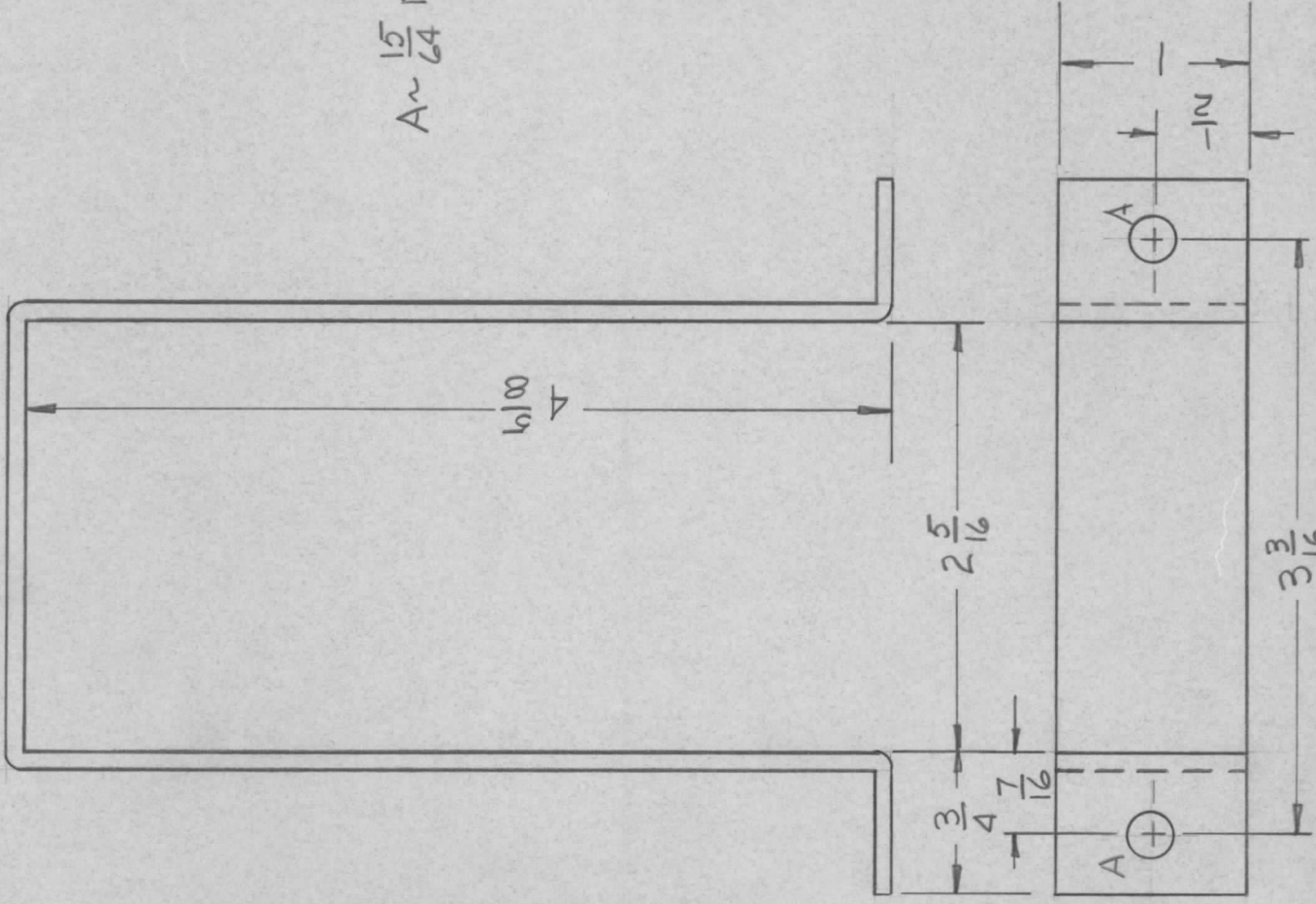
MARK TMC PART NUMBER
1/8 HIGH GOTHIC WITH LATEST
REVISION LETTER

UNLESS OTHERWISE SPECIFIED DIMENSIONS ARE IN INCHES AND INCLUDE CHEMICALLY APPLIED OR PLATED FINISHES	REQ'D ITEM	PART NUMBER	DESCRIPTION	SYM.
DECIMALS X ± .05 XX ± .01 .XXX ± .005	BUDETTI		LIST OF MATERIAL	
FRACTIONS 1/64 ANGLES 0°-30°	FINAL APPROVAL <i>DBS</i>	DATE 9/1/70	THE TECHNICAL MATERIEL CORP. MAMARONECK, NEW YORK	
MATERIAL .064 ALUM	MECH. DES. <i>JMM</i>	DATE 28 AUG 70	PLATE, SHIM	
FINISH S404 YEL IRID	ELECT. DES.	DATE		
	CHECKED	DATE		
	DRAWN <i>JMM</i>	DATE 26 JUN 70		
SIZE A		CODE IDENT. NO. 82679	DWG NO. MS 5658	ISSUE Ø
SCALE		SHEET	OF	

NOTICE TO PERSONS RECEIVING THIS DRAWING
THE TECHNICAL MATERIEL CORPORATION claims proprietary right in the material disclosed hereon. This drawing is issued in confidence for engineering information only and may not be reproduced or used to manufacture anything shown hereon without permission from THE TECHNICAL MATERIEL CORPORATION to the user. This drawing is prepared for mutual assistance and is subject to recall at any time.

APPLICATION REVISIONS

QTY	MODEL USED ON	ASS'Y NO.	LTR	DESCRIPTION	DATE	E.M.N.NO	DRAFT	CHKD	APPD
1	HFLM-1K	AP150	Ø	ORIGINAL RELEASE	10/15hc		CU		



- UNLESS OTHERWISE SPECIFIED:
1. USE MATERIAL THICKNESS FOR MAXIMUM RADIUS ON ALL BENDS.
 2. ALL ANGULAR BENDS 90 DEGREES.
 3. REMOVE ALL BURRS AND SHARP EDGES.
 4. MOUNT INSERTS AFTER FINISHING.

UNLESS OTHERWISE SPECIFIED DIMENSIONS ARE IN INCHES AND INCLUDE CHEMICALLY APPLIED OR PLATED FINISHES		REQ'D ITEM	PART NUMBER	DESCRIPTION	SYM.
DECIMALS		BUDETTI		LIST OF MATERIAL	
X ± .05	1/64	FINAL APPROVAL	DATE	THE TECHNICAL MATERIEL CORP.	
.XX ± .01	TOLS.	<i>[Signature]</i>	12/21/70	MAMARONECK, NEW YORK	
.XXX ± .005	ANGLES	MECH. DES.	5/22/70		
	9°-30°	ELECT. DES.			
MATERIAL: 081 ALUM		CHECKED			
5052-H32		DRAWN	DATE	BRACKET, CAP.	
FINISH			30 SEP 70		
S404 YEL IRID					

NOTICE TO PERSONS RECEIVING THIS DRAWING
 THE TECHNICAL MATERIEL CORPORATION claims proprietary right in the material disclosed hereon. This drawing is issued in confidence for engineering information only and may not be reproduced or used to manufacture anything shown hereon without permission from THE TECHNICAL MATERIEL CORPORATION to the user. This drawing is loaned for mutual assistance and is subject to recall at any time.

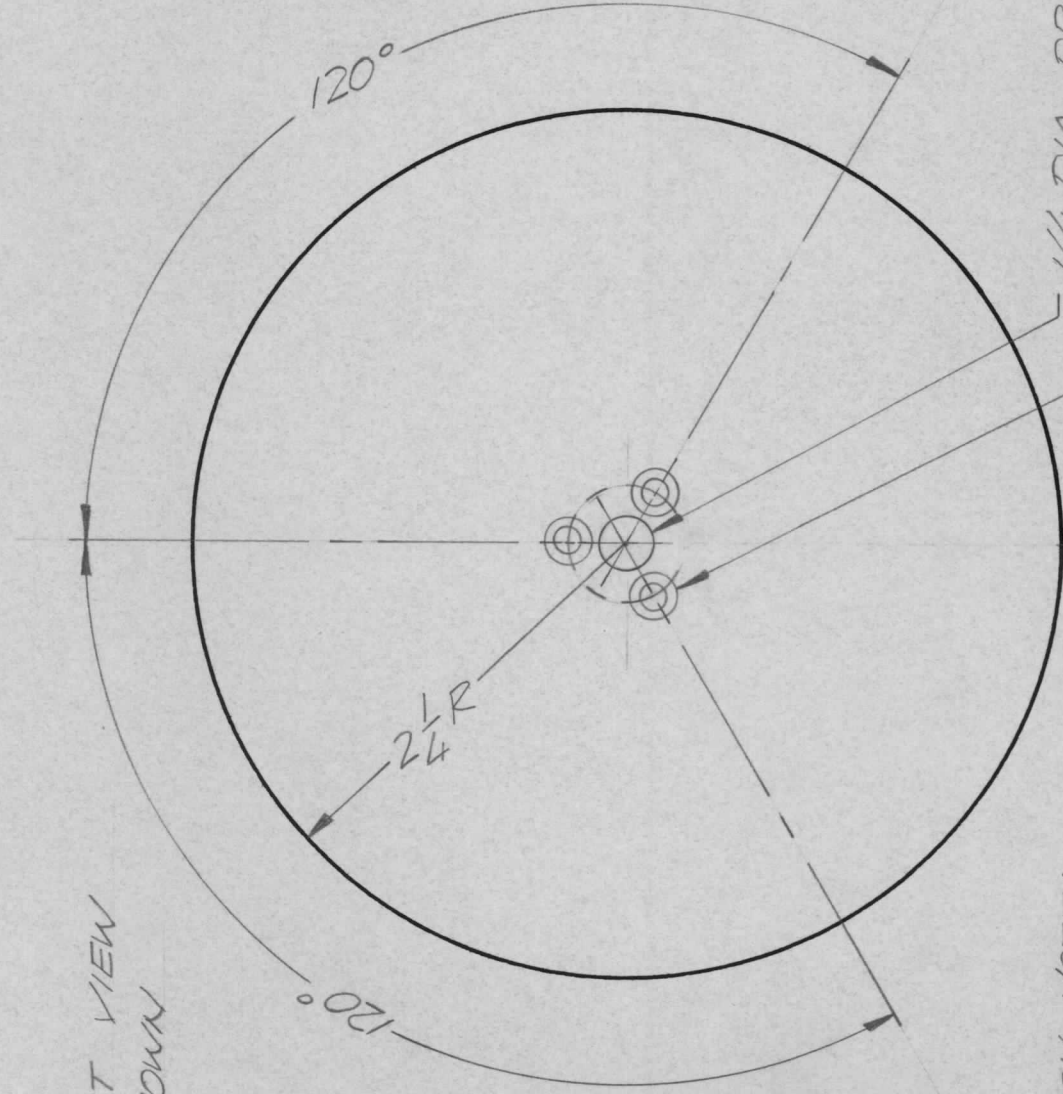
SIZE	CODE IDENT. NO.	DWG NO.	ISSUE
A	82679	MS5670	Ø
SCALE		SHEET	OF

REVISIONS

APPLICATION

QTY	MODEL USED ON	ASS'Y NO.	LTR	DESCRIPTION	DATE	E.M.N.NO	DRAFT	CHKD	APPD
1	TLAMIK	AS147	Ø	ORIGINAL RELEASE	10/8/70		GE		

FRONT VIEW
SHOWN



FINISH NOTE:

1. S404 YELLOW IRIDITE
2. S114 ZINC CHROMATE PRIMER
3. FED. STD. 595 NO. 37038
FLAT BLACK MATTE OR EQUIV.
FRONT & EDGES ONLY NOS. 2&3

REF: LD 2434

1/4 DIA. DRILL THRU
MUST BE CONCENTRIC
TO .281 R.

DRILL & C'SINK FOR
0632 SCREW ON A.281R
AS SHOWN (3 REQ)

UNLESS OTHERWISE SPECIFIED DIMENSIONS ARE IN INCHES AND INCLUDE CHEMICALLY APPLIED OR PLATED FINISHES	REQ'D ITEM	PART NUMBER	DESCRIPTION	SYM.
DECIMALS	LIST OF MATERIAL			
X ± .05	FINAL APPROVAL	DATE	THE TECHNICAL MATERIEL CORP.	
.XX ± .01	<i>F. BUDETTI</i>	26 Oct 70	MAMARONECK, NEW YORK	
.XXX ± .005	MECH. DES.	10-23-70	DIAL, BANDSWITCH	
.064ALUM	ELECT. DES.			
FINISH	CHECKED	DATE		
SEE NOTE	DRAWN	10/8/70		

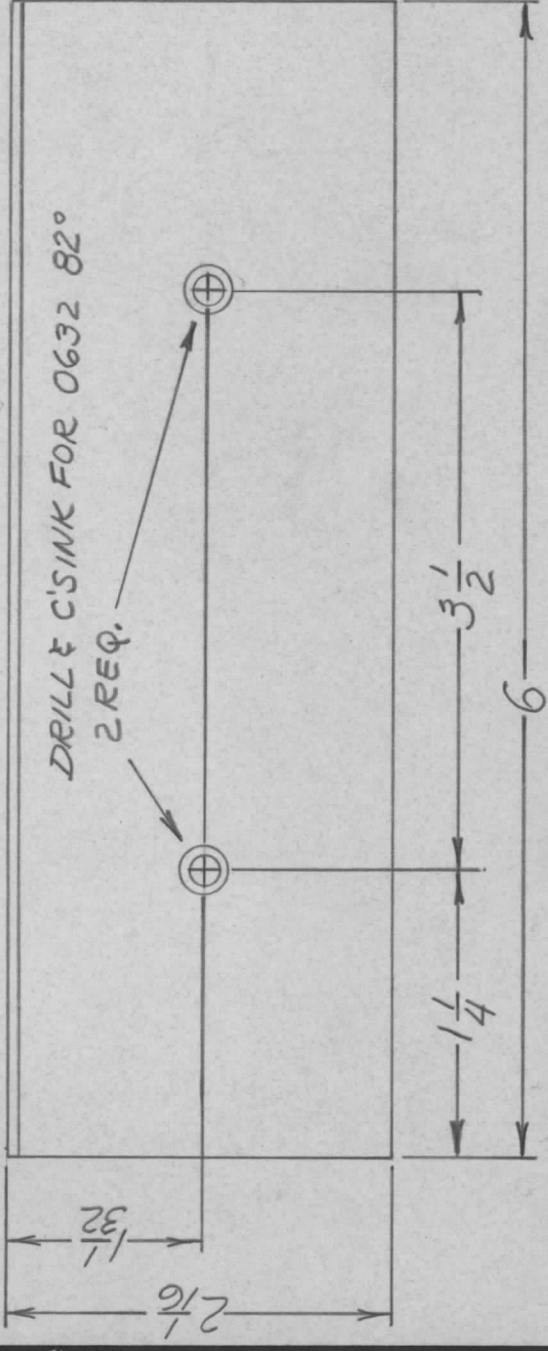
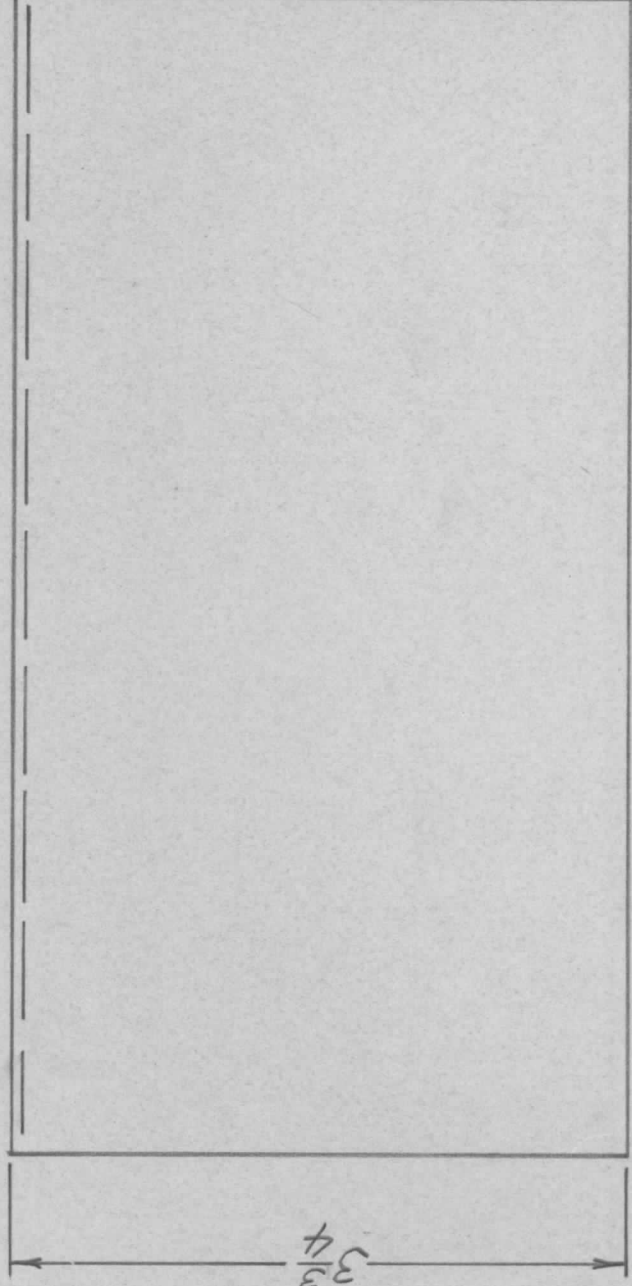
NOTICE TO PERSONS RECEIVING THIS DRAWING
THE TECHNICAL MATERIEL CORPORATION claims proprietary right in the material disclosed hereon. This drawing is issued in confidence for engineering information only and may not be reproduced or used to manufacture anything shown hereon without permission from THE TECHNICAL MATERIEL CORPORATION to the user. This drawing is loaned for mutual assistance and is subject to recall at any time.

SIZE	CODE IDENT. NO.	DWG NO.	ISSUE
A	82679	MS 5684	Ø
SCALE	1:1	SHEET	OF

APPLICATION

REVISIONS

QTY	MODEL USED ON	ASS'Y NO.	LTR	DESCRIPTION	DATE	E.M.N.NO	DRAFT	CHKD	APPD
6	L PFB-2		Ø	ORIGINAL RELEASE	11/30/70		W		

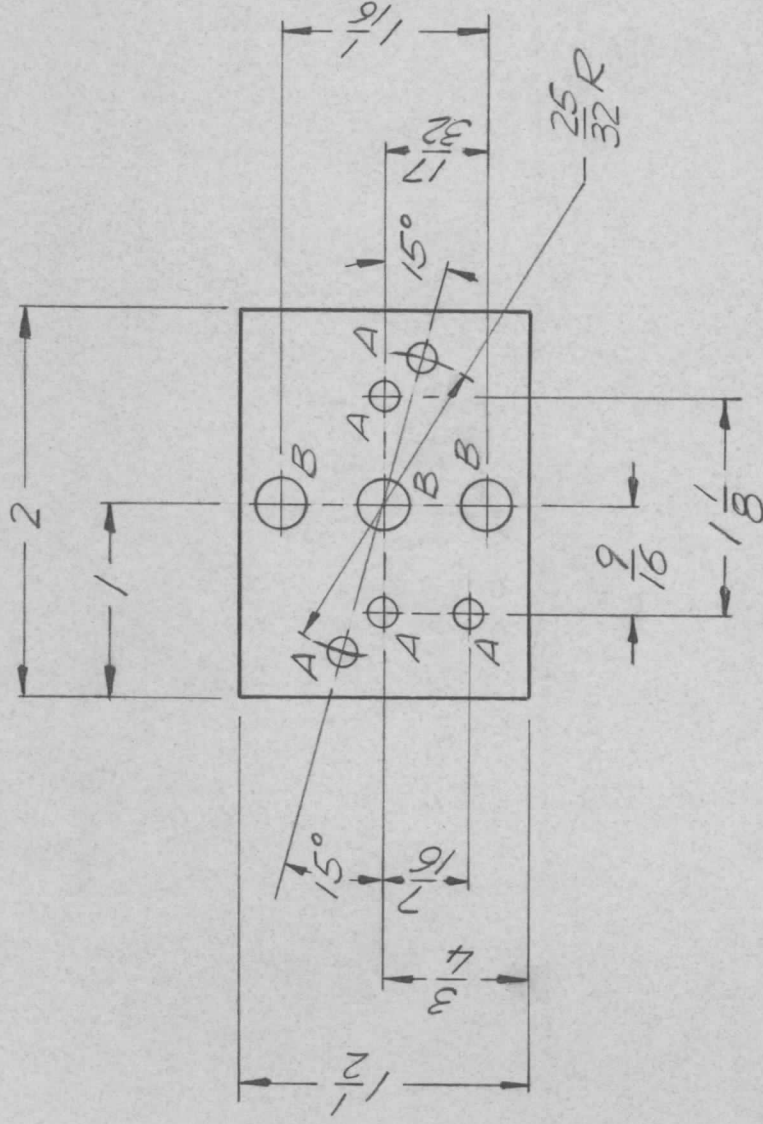


UNLESS OTHERWISE SPECIFIED DIMENSIONS ARE IN INCHES AND INCLUDE CHEMICALLY APPLIED OR PLATED FINISHES		REQ'D ITEM	PART NUMBER	DESCRIPTION	SYM.
DECIMALS X ± .05 .XX ± .01 .XXX ± .005		F. BUDETTI		LIST OF MATERIAL	
FRACTIONS 1/64 ANGLES 0°-30°		FINAL APPROVAL	DATE	THE TECHNICAL MATERIEL CORP.	
MATERIAL .064 ALUM. 5052-H32		MECH. DES.	DATE	MAMARONECK, NEW YORK	
FINISH S404 YEL. IRIDITE		ELECT. DES.	DATE	SHIELD, MODULE	
NOTICE TO PERSONS RECEIVING THIS DRAWING		CHECKED	DATE		
THE TECHNICAL MATERIEL CORPORATION claims proprietary right in the material disclosed hereon. This drawing is issued in confidence for engineering information only and may not be reproduced or used to manufacture anything shown hereon without permission from THE TECHNICAL MATERIEL CORPORATION to the user. This drawing is loaned for mutual assistance and is subject to recall at any time.		DRAWN	DATE		
SIZE		A	CODE IDENT. NO.	82679	ISSUE
SCALE			DWG NO.	MS5689	Ø
			SHEET		OF

APPLICATION

REVISIONS

QTY	MODEL USED ON	ASS'Y NO.	LTR	DESCRIPTION	DATE	E.M.N.NO	DRAFT	CHKD	APPD
1	LPFB-2		Ø	ORIGINAL RELEASE	11/30/70		Ø		



HOLE DESCRIPTION QTY
 A 9/64 DIA 5
 B 1/4 DIA 3

UNLESS OTHERWISE SPECIFIED DIMENSIONS ARE IN INCHES AND INCLUDE CHEMICALLY APPLIED OR PLATED FINISHES	REQ'D ITEM	PART NUMBER	DESCRIPTION	SYM.
DECIMALS X ± .05 .XX ± .01 .XXX ± .005	F. BUDETTI		LIST OF MATERIAL	
FRACTIONS 1/64	FINAL APPROVAL <i>[Signature]</i>		THE TECHNICAL MATERIEL CORP.	
ANGLES 0°-30°	MECH. DES. ALP.	DATE 30 Nov 70	MAMARONECK, NEW YORK	
MATERIAL 064 ALUM 5052 H32	ELECT. DES.	DATE 11-30-70		
FINISH S404 YEL. IRIDITE	CHECKED	DATE		
	DRAWN GE	DATE 10/29/70	BRACKET, WAFERMOUNT	

SIZE	CODE IDENT. NO.	DWG NO.	ISSUE
A	82679	MS 5691	Ø
SCALE	SHEET	OF	
1:1			

NOTICE TO PERSONS RECEIVING THIS DRAWING
 THE TECHNICAL MATERIEL CORPORATION claims proprietary right in the material disclosed hereon. This drawing is issued in confidence for engineering information only and may not be reproduced or used to manufacture anything shown hereon without permission from THE TECHNICAL MATERIEL CORPORATION to the user. This drawing is loaned for mutual assistance and is subject to recall at any time.

APPLICATION

REVISIONS

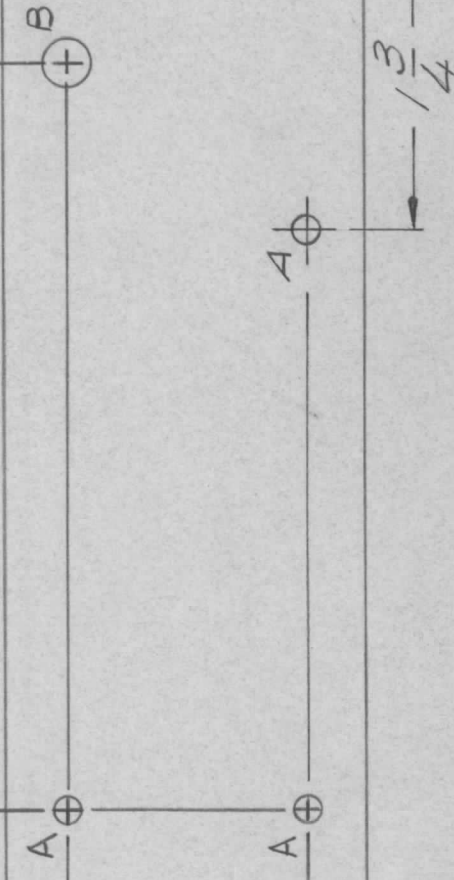
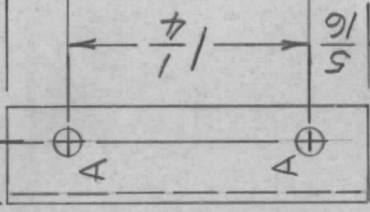
QTY	MODEL USED ON	ASS'Y NO.	LTR	DESCRIPTION	DATE	E.M.N.NO	DRAFT	CHKD	APPD
1	LPFB-2 (G)	AX5126	Ø	ORIGINAL RELEASE	1/24/70		Ø		

6 1/16

5 7/8

3 7/8

1/2
5/16



HOLE	DESCRIPTION	REQ.
A	9/64 DIA.	7
B	1/4 DIA.	1

OPP. SIDE IS IDENTICAL

REQ'D ITEM	PART NUMBER	DESCRIPTION	SYM.
LIST OF MATERIAL			
THE TECHNICAL MATERIEL CORP.			
MAMARONECK, NEW YORK			
CENTERSHIELD, MOD.			

SIZE	CODE IDENT. NO.	DWG NO.	ISSUE
A	82679	MS 5694	Ø
SCALE	SHEET	OF	

FINAL APPROVAL	DATE
<i>F. BUDETTI</i>	27 04 70
MECH. DES.	DATE
<i>ALP.</i>	27 04 70
ELECT. DES.	DATE
CHECKED	DATE
DRAWN	DATE
<i>A. PETROCCA</i>	10-70

UNLESS OTHERWISE SPECIFIED DIMENSIONS ARE IN INCHES AND INCLUDE CHEMICALLY APPLIED OR PLATED FINISHES

DECIMALS FRACTIONS
 X ± .05 1/64
 .XX ± .01 ANGLES
 .XXX ± .005 0°-30°

MATERIAL .064
 ALUM. 5052-H32
 FINISH
 S404 YEL.IRIDITE

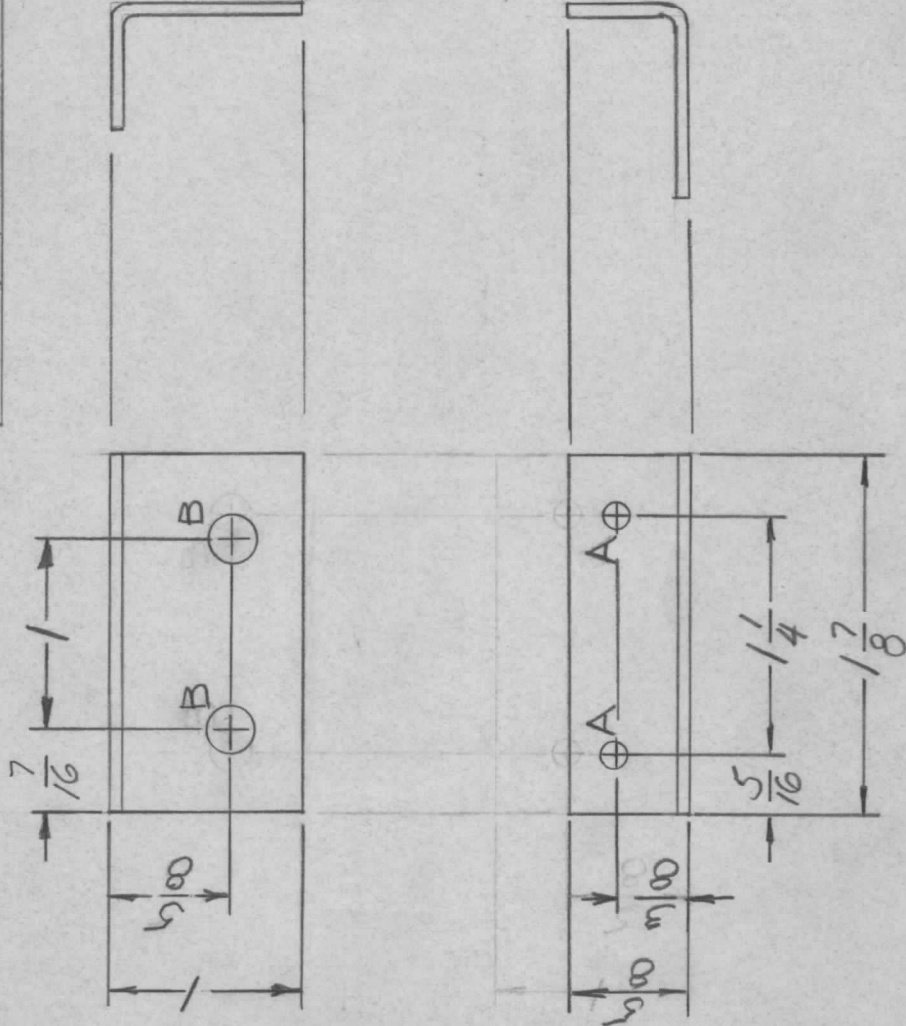
NOTICE TO PERSONS RECEIVING THIS DRAWING
 THE TECHNICAL MATERIEL CORPORATION claims proprietary right in the material disclosed hereon. This drawing is issued in confidence for engineering information only and may not be reproduced or used to manufacture anything shown hereon without permission from THE TECHNICAL MATERIEL CORPORATION to the user. This drawing is loaned for mutual assistance and is subject to recall at any time.

APPLICATION

REVISIONS

QTY	MODEL USED ON	ASS'Y NO.	LTR	DESCRIPTION	DATE	E.M.N.NO	DRAFT	CHKD	APPD
12	LPEB-2	AX5126	Ø	ORIGINAL RELEASE	11/30/70		(1)		

HOLE	DESCRIPTION	REQ.
A	9/64 DIA.	2
B	1/4 DIA.	2



UNLESS OTHERWISE SPECIFIED DIMENSIONS ARE IN INCHES AND INCLUDE CHEMICALLY APPLIED OR PLATED FINISHES

DECIMALS
X ± .05
.XX ± .01
.XXX ± .005

FRACTIONS
1/64
ANGLES
0°-30°

TOLS.

MATERIAL .064
ALUM. 5052-H32

FINISH
S404 YEL.IRIDITE

REQ'D ITEM	PART NUMBER	DESCRIPTION	SYM.
F. BUDETTI		LIST OF MATERIAL	

FINAL APPROVAL	DATE	THE TECHNICAL MATERIEL CORP.
<i>AB</i>	27 Oct 70	MAMARONECK, NEW YORK
MECH. DES.	DATE	
ALP.	27 Oct 70	
ELECT. DES.	DATE	
CHECKED	DATE	
DRAWN	DATE	
A. PETROCCA	10-70	BRKT., COIL MOUNT

SIZE	CODE IDENT. NO.	DWG NO.	ISSUE
A	82679	MS5695	Ø
SCALE	SHEET	OF	

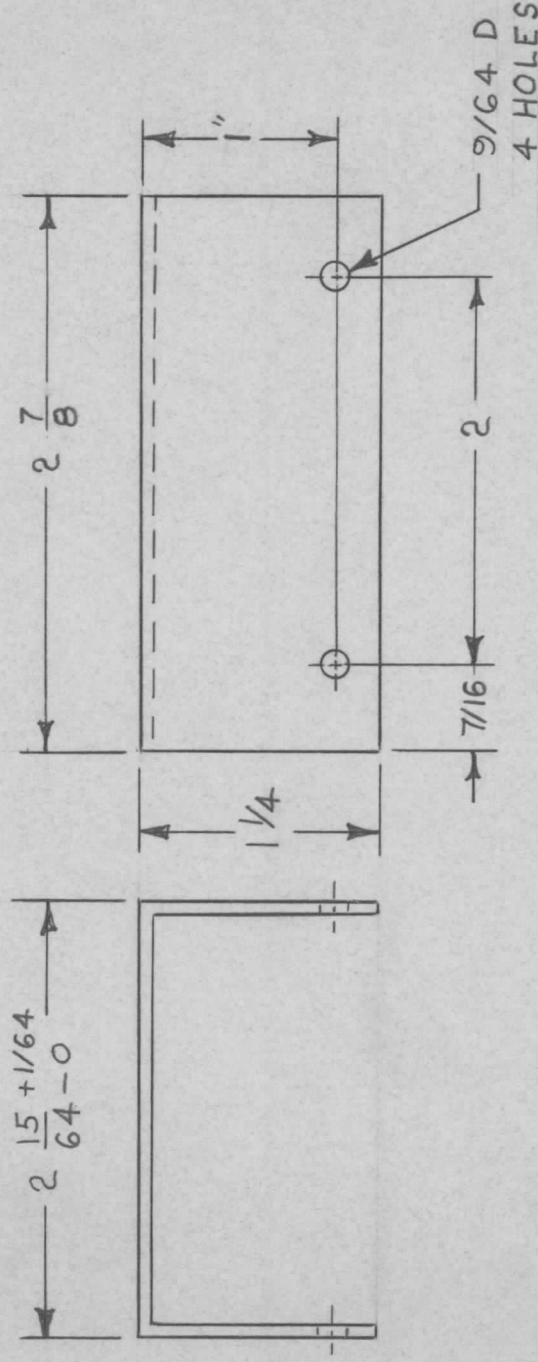
NOTICE TO PERSONS RECEIVING THIS DRAWING
THE TECHNICAL MATERIEL CORPORATION claims proprietary right in the material disclosed hereon. This drawing is issued in confidence for engineering information only and may not be reproduced or used to manufacture anything shown hereon without permission from THE TECHNICAL MATERIEL CORPORATION to the user. This drawing is loaned for mutual assistance and is subject to recall at any time.

APPLICATION

QTY	MODEL USED ON	ASS'Y NO.	LTR
1	AX5127	AX5127	X

REVISIONS

DESCRIPTION	DATE	E.M.N.NO	DRAFT	CHKD	APPD
RELEASED FOR EXP.	11/17/70		RJ		
ORIGINAL RELEASE	11/18/70		(D)		



UNLESS OTHERWISE SPECIFIED:

1. USE MATERIAL THICKNESS FOR MAXIMUM RADIUS ON ALL BENDS.
2. ALL ANGULAR BENDS 90 DEGREES.
3. REMOVE ALL BURRS AND SHARP EDGES.
4. MOUNT INSERTS AFTER FINISHING.

UNLESS OTHERWISE SPECIFIED
DIMENSIONS ARE IN INCHES
AND INCLUDE CHEMICALLY APPLIED
OR PLATED FINISHES

DECIMALS
X ± .05
.XX ± .01
.XXX ± .005

FRACTIONS
1/64
ANGLES
0°-30°

MATERIAL .057 ALM.
5052-H 52

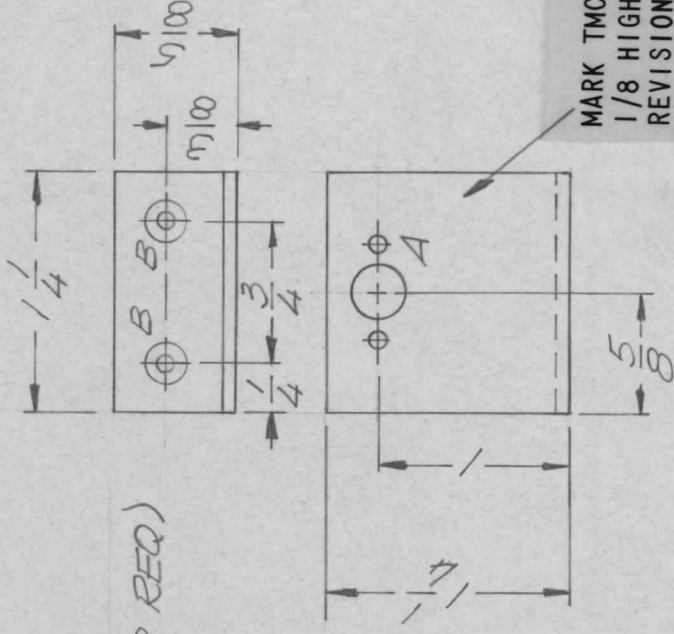
FINISH
IRIDITE

REQ'D ITEM	PART NUMBER	DESCRIPTION	SYM.
POSE		LIST OF MATERIAL	
FINAL APPROVAL <i>Pose</i>	DATE 11/17/70	THE TECHNICAL MATERIEL CORP. MAMARONECK, NEW YORK	
MECH. DES. <i>ave</i>	DATE 11/17/70		
ELECT. DES.	DATE		
CHECKED	DATE		
DRAWN <i>R. Volano</i>	DATE 11/17/70	COVER	
NOTICE TO PERSONS RECEIVING THIS DRAWING		SIZE	ISSUE
THE TECHNICAL MATERIEL CORPORATION claims proprietary right in the material disclosed hereon. This drawing is issued in confidence for engineering information only and may not be reproduced or used to manufacture anything shown hereon without permission from THE TECHNICAL MATERIEL CORPORATION to the user. This drawing is loaned for mutual assistance and is subject to recall at any time.		A	Ø
		CODE IDENT. NO.	
		82679	
		DWG NO.	
		MS 5697	
		SCALE 1:1	SHEET 1 OF 1

APPLICATION REVISIONS

QTY	MODEL USED ON	ASS'Y NO.	LTR	DESCRIPTION	DATE	E.M.N.NO	DRAFT	CHKD	APPD
1	TLAM 1K	BMA446	X	EXP RELEASE			GE		
			Ø	ORIGINAL RELEASE	1/14/71		W		PEL

① MOUNT IN ALL 'B'
HOLES AS SHOWN (2 REQ)



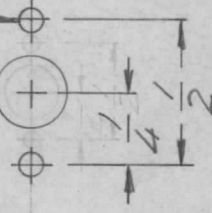
HOLE CHART

A - SEE DETAIL - 1 REQ

B - .191 - .194 DIA. - 2 REQ

9/32 DIA. (1 REQ)

3/32 DIA. (2 REQ)



A DETAIL

UNLESS OTHERWISE SPECIFIED:

1. USE MATERIAL THICKNESS FOR MAXIMUM RADIUS ON ALL BENDS.
2. ALL ANGULAR BENDS 90 DEGREES.
3. REMOVE ALL BURRS AND SHARP EDGES.
4. MOUNT INSERTS AFTER FINISHING.

REQ'D ITEM	PART NUMBER	DESCRIPTION	SYM.
2	1	NT129-06324 NUT PLN SPLINE	B
F. BUDETTI LIST OF MATERIAL			
FINAL APPROVAL	DATE	THE TECHNICAL MATERIEL CORP.	
<i>[Signature]</i>	13 Feb 71	MAMARONECK, NEW YORK	
MECH. DES.	DATE	BRACKET, RESISTOR, MOUNT	
AL PETROCCA	1-13-71	(ALDC ADJUST)	
ELECT. DES.	DATE		
CHECKED	DATE		
DRAWN	DATE		
GE	10/15/70		
UNLESS OTHERWISE SPECIFIED DIMENSIONS ARE IN INCHES AND INCLUDE CHEMICALLY APPLIED OR PLATED FINISHES			
DECIMALS			
X ± .05	1/64		
.XX ± .01	TOLS. ANGLES		
.XXX ± .005	0°-30°		
MATERIAL .064 ALUM			
5052 H32			
FINISH S404			
YEL. IRIDITE			
SIZE	CODE IDENT. NO.	DWG NO.	ISSUE
A	82679	MS5699	Ø
SCALE 1:1	SHEET	OF	

NOTICE TO PERSONS RECEIVING THIS DRAWING
THE TECHNICAL MATERIEL CORPORATION claims proprietary right in the material disclosed hereon. This drawing is issued in confidence for engineering information only and may not be reproduced or used to manufacture anything shown hereon without permission from THE TECHNICAL MATERIEL CORPORATION to the user. This drawing is loaned for mutual assistance and is subject to recall at any time.