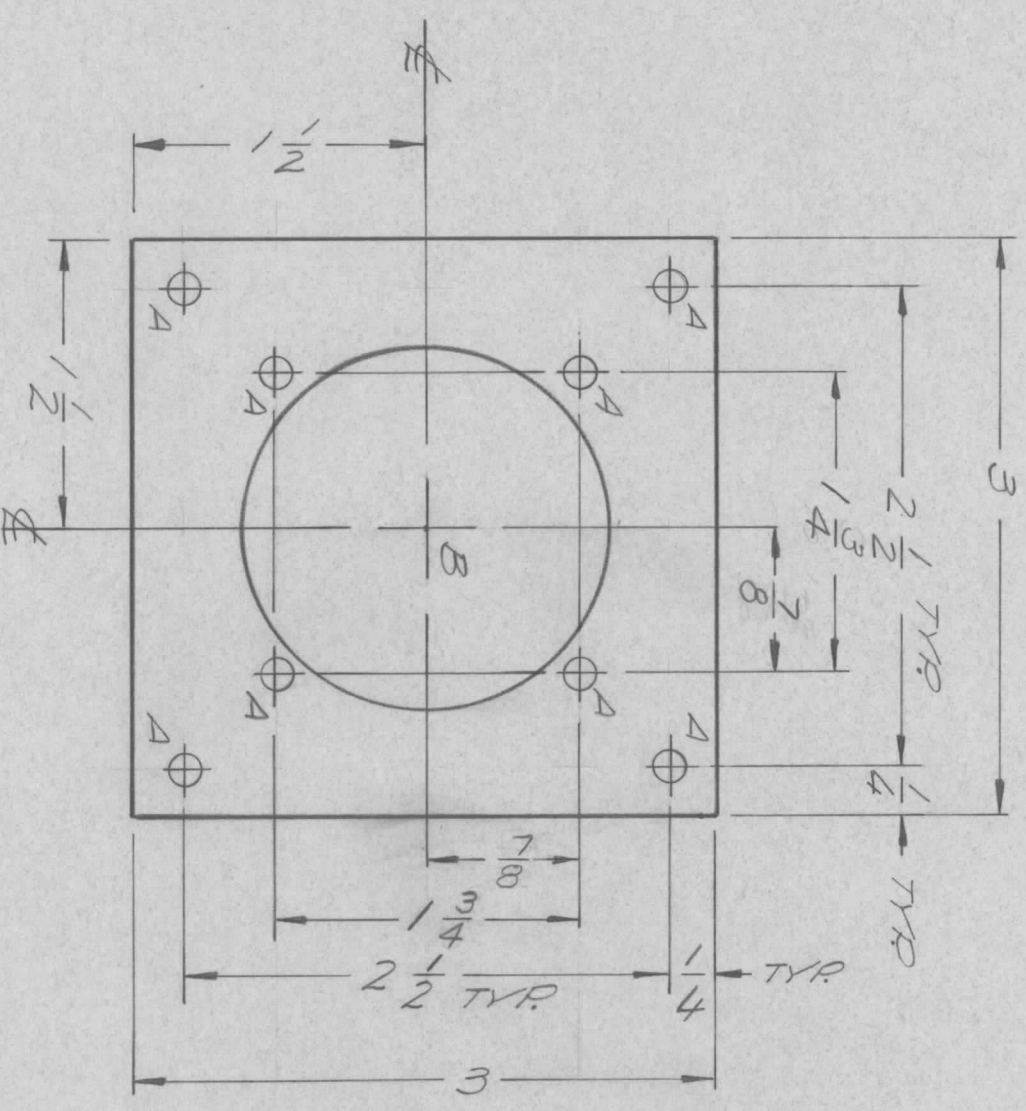


REVISIONS						
ZONE	LTR	DESCRIPTION	DATE	E.M.N. NO.	DRAFT	CHKD
	X	EXP. RELEASE	7-8-70		GE	
	Ø	ORIGINAL RELEASE	10/21/70		(1)	

HOLE	DESCRIPTION	REQ
A	11/64 DIA.	8
B	2 1/16 DIA.	1



QTY / UNIT	1	MODEL USED ON	RCP-6	ASSY NO.	
APPLICATION					
CODE					

NOTICE TO PERSONS RECEIVING THIS DRAWING
 THE TECHNICAL MATERIEL CORPORATION claims proprietary right in the material disclosed hereon. This drawing is issued in confidence for engineering information only and may not be reproduced or used to manufacture anything shown hereon without permission from THE TECHNICAL MATERIEL CORPORATION to the user. This drawing is loaned for mutual assistance and is subject to recall at any time.

UNLESS OTHERWISE SPECIFIED DIMENSIONS ARE IN INCHES AND INCLUDE CHEMICALLY APPLIED OR PLATED FINISHES	FRACTIONS	1/64
DECIMALS	TOLS.	ANGLES
X ± .05		0° - 30°
.XX ± .01		
.XXX ± .005		
MATERIAL	064 ALUM.	
FINISH	S404	
	YEL. IRIDITE	

REQ'D ITEM	PART NUMBER	DESCRIPTION	SYM.
F. BUDETTI			
LIST OF MATERIAL			
FINAL APPROVAL	DATE	THE TECHNICAL MATERIEL CORP.	
MECH. DES.	DATE	MAMARONECK, NEW YORK	
ELECT. DES.	DATE	BRKT, CONV. MTG.	
CHECKED	DATE	SIZE	CODE IDENT. NO.
DRAWN	DATE	B	82679
		SCALE	DWG NO.
			MS 5678
		SHEET	ISSUE
		OF	Ø