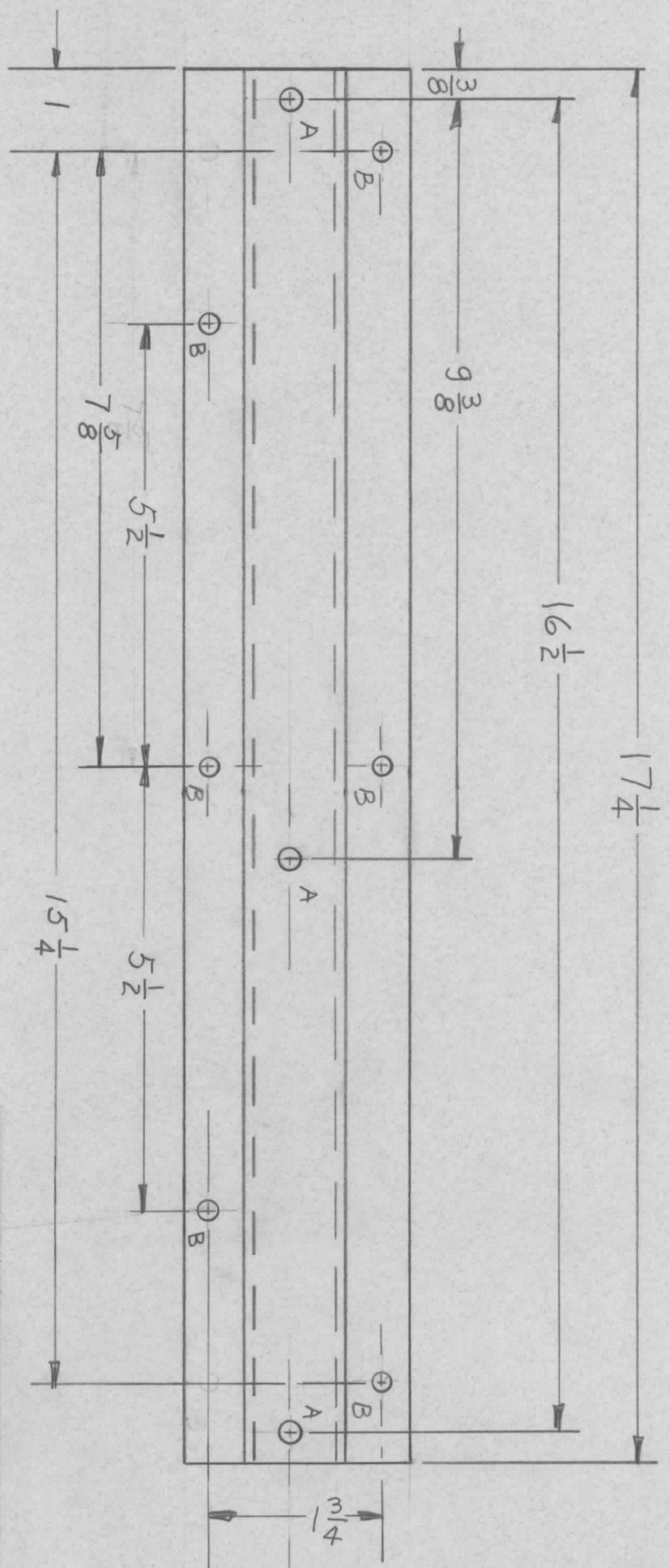


REVISIONS							
ZONE	LTR	DESCRIPTION	DATE	E.M.N.NO	DRAFT	CHKD	APPD
	Ø	ORIGINAL RELEASE	10/15/70				



A ~ .250-.254 DIA. 3 REQ.
 B ~ 13/64 DIA. 6 REQ.

MARK TMC PART NUMBER
 1/8 HIGH GOTHIC WITH LATEST
 REVISION LETTER

- UNLESS OTHERWISE SPECIFIED:
1. USE MATERIAL THICKNESS FOR MAXIMUM RADIUS ON ALL BENDS.
 2. ALL ANGULAR BENDS 90 DEGREES.
 3. REMOVE ALL BURRS AND SHARP EDGES.
 4. MOUNT INSERTS AFTER FINISHING.

QTY / UNIT	2	MODEL USED ON	HFLM-1K	ASS'Y NO.	AP150
APPLICATION		CODE			

NOTICE TO PERSONS RECEIVING THIS DRAWING
 THE TECHNICAL MATERIEL CORPORATION claims proprietary right in the material disclosed herein. This drawing is issued in confidence for engineering information only and may not be reproduced or used to manufacture anything shown herein without permission from THE TECHNICAL MATERIEL CORPORATION to the user. This drawing is loaned for mutual assistance and is subject to recall at any time.

DECIMALS	.X ± .05	TOLS.	1/64
	.XX ± .01	ANGLES	0°-30'
	.XXX ± .005		
MATERIAL .081 ALUM			
5052-H 32			
FINISH 5404 YEL. IRID.			

REQ'D ITEM	PART NUMBER	DESCRIPTION	SYM.
3	1	NT129-1032-6 NUT, PLN SPLINE	

FINAL APPROVAL	DATE	12 24 70
MECH. DES.	DATE	5 27 70
ELECT. DES.	DATE	
CHECKED	DATE	
DRAWN	DATE	29 SEP 70

LIST OF MATERIAL			
THE TECHNICAL MATERIEL CORP.			
MAMARONECK, NEW YORK			
CHANNEL, SUPPORT			
SIZE	CODE IDENT. NO.	DWG NO.	ISSUE
B	82679	MS 5672	Ø
SCALE	SHEET		OF

