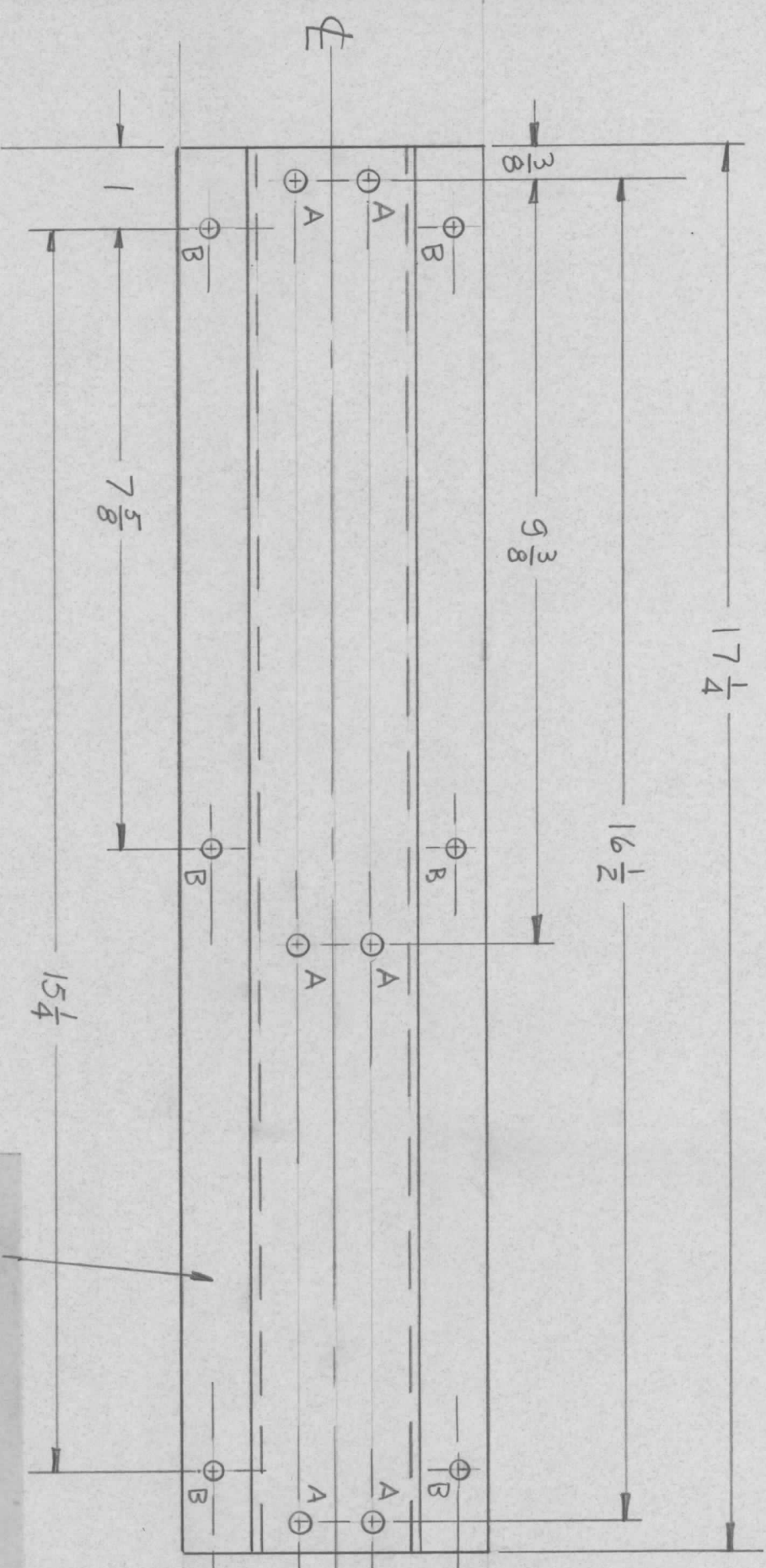


REVISIONS							
ZONE	LTR	DESCRIPTION	DATE	E.M.N. NO	DRAFT	CHKD	APPD
	Ø	ORIGINAL RELEASE	10/15/70		CU		



MARK TMC PART NUMBER  
1/8 HIGH GOTHIC WITH LATEST  
REVISION LETTER

A ~ .250 - .254 DIA. 6 REQ.  
B ~ 13/64 DIA. 6 REQ.

- UNLESS OTHERWISE SPECIFIED:
1. USE MATERIAL THICKNESS FOR MAXIMUM RADIUS ON ALL BENDS.
  2. ALL ANGULAR BENDS 90 DEGREES.
  3. REMOVE ALL BURRS AND SHARP EDGES.
  4. MOUNT INSERTS AFTER FINISHING.

QTY / UNIT	1	MODEL USED ON	HELIX-1K	ASS'Y NO.	AP150
		APPLICATION			
		CODE			

NOTICE TO PERSONS RECEIVING THIS DRAWING  
THE TECHNICAL MATERIEL CORPORATION claims proprietary right in the material disclosed hereon. This drawing is issued in confidence for engineering information only and may not be reproduced or used to manufacture anything shown hereon without permission from THE TECHNICAL MATERIEL CORPORATION to the user. This drawing is loaned for mutual assistance and is subject to recall at any time.

DECIMALS	.X ± .05	FRACTIONS	1/64
	.XX ± .01	ANGLES	0° - 30'
	.XXX ± .005		
MATERIAL	.081 ALUM.		
FINISH	5052-H32		
	S404 YEL. IRID		

REQ'D ITEM	6	1	NT129-1032-6	NUT, PLN, SPLINE	SYM.
LIST OF MATERIAL					
THE TECHNICAL MATERIEL CORP.					
MAMARONECK, NEW YORK					

FINAL APPROVAL	MECH. DES.	ELECT. DES.	CHECKED	DRAWN	DATE	DATE	DATE	DATE	DATE
					12/21/70	5/21/70	2/15/70		
CHANNEL SUPPORT									
SIZE	B	CODE IDENT. NO.	82679	DWG NO.	MS5671	ISSUE			
SCALE				SHEET	OF				