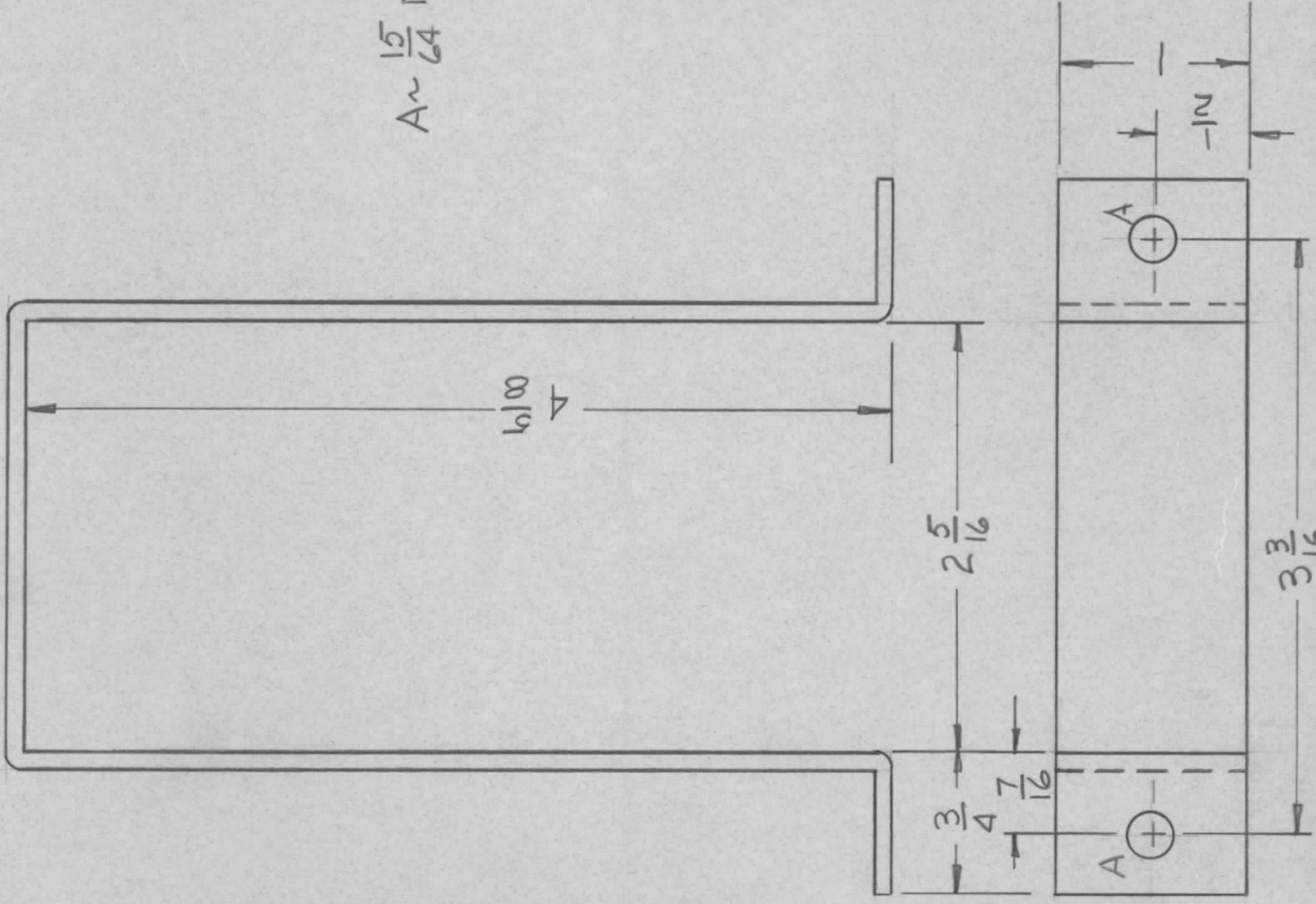


APPLICATION

QTY 1  
 MODEL USED ON HFLM-1K  
 ASS'Y NO. AP150  
 LTR Ø

REVISIONS

DESCRIPTION ORIGINAL RELEASE  
 DATE 10/15/64  
 E.M.N.NO.  
 DRAFT CU  
 CHKD  
 APPD



- UNLESS OTHERWISE SPECIFIED:
1. USE MATERIAL THICKNESS FOR MAXIMUM RADIUS ON ALL BENDS.
  2. ALL ANGULAR BENDS 90 DEGREES.
  3. REMOVE ALL BURRS AND SHARP EDGES.
  4. MOUNT INSERTS AFTER FINISHING.

UNLESS OTHERWISE SPECIFIED DIMENSIONS ARE IN INCHES AND INCLUDE CHEMICALLY APPLIED OR PLATED FINISHES	REQ'D ITEM	PART NUMBER	DESCRIPTION	SYM.
DECIMALS X ± .05 .XX ± .01 .XXX ± .005	BUDETTI		LIST OF MATERIAL	
FRACTIONS 1/64	FINAL APPROVAL	DATE		
ANGLES 0°-30°	<i>[Signature]</i>	12/24/70		
MATERIAL: 081 ALUM 5052-H32	MECH. DES.	DATE	THE TECHNICAL MATERIEL CORP. MAMARONECK, NEW YORK	
FINISH S404 YEL IRID	ELECT. DES.	DATE		
	CHECKED	DATE		
	DRAWN	DATE	BRACKET, CAP.	
		30 SEP 70		
NOTICE TO PERSONS RECEIVING THIS DRAWING	SIZE	CODE IDENT. NO.	DWG NO.	ISSUE
THE TECHNICAL MATERIEL CORPORATION claims proprietary right in the material disclosed hereon. This drawing is issued in confidence for engineering information only and may not be reproduced or used to manufacture anything shown hereon without permission from THE TECHNICAL MATERIEL CORPORATION to the user. This drawing is loaned for mutual assistance and is subject to recall at any time.	A	82679	MS5670	Ø
	SCALE		SHEET	OF