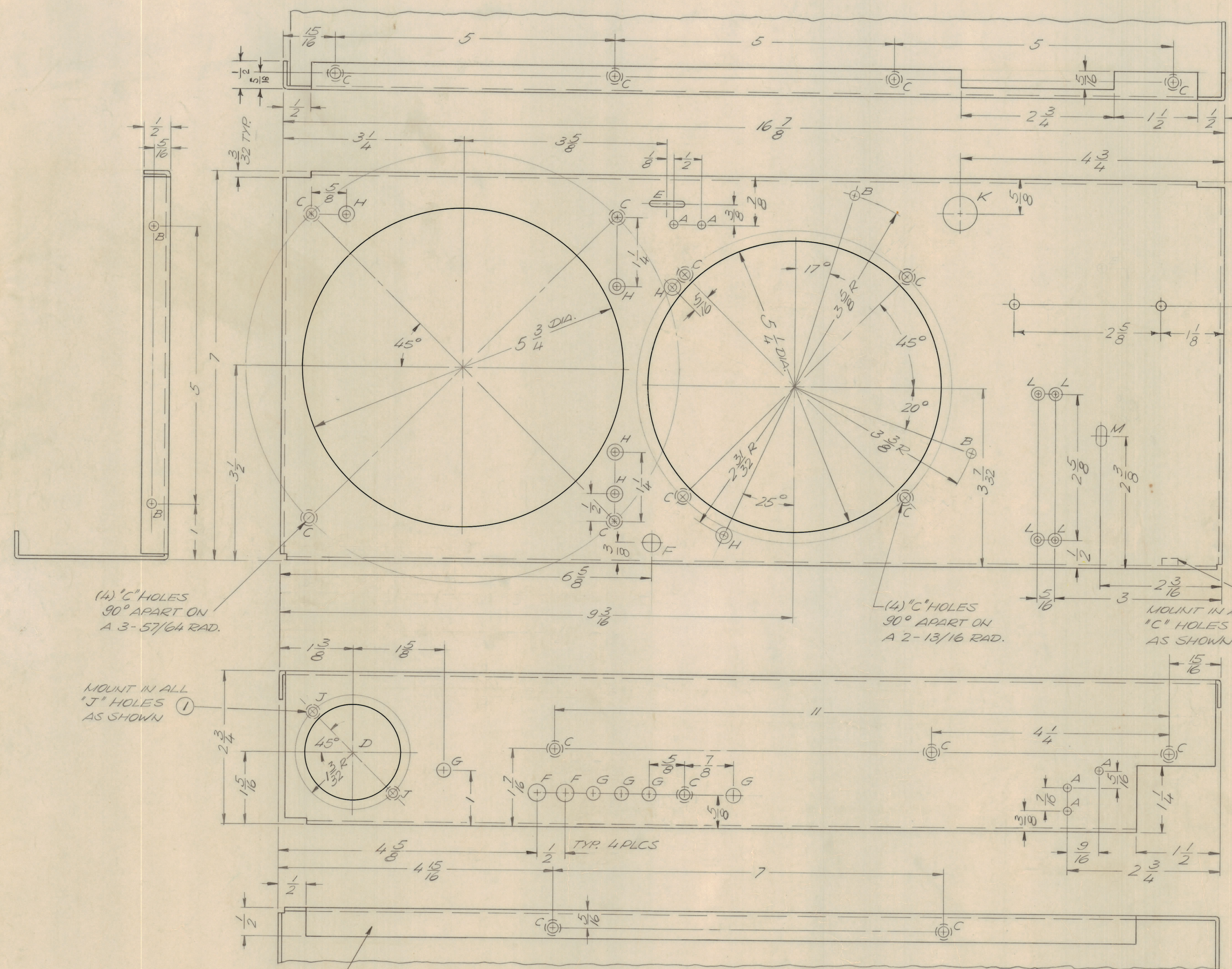
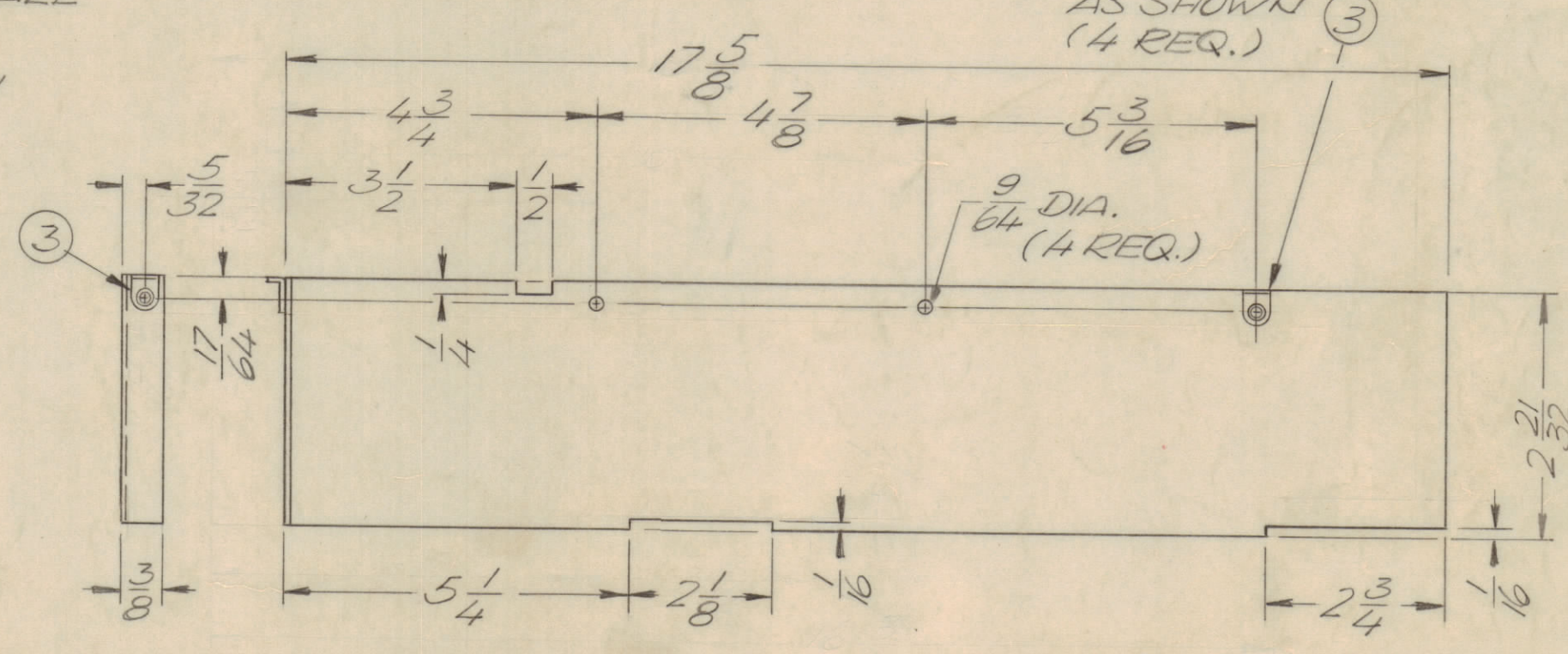
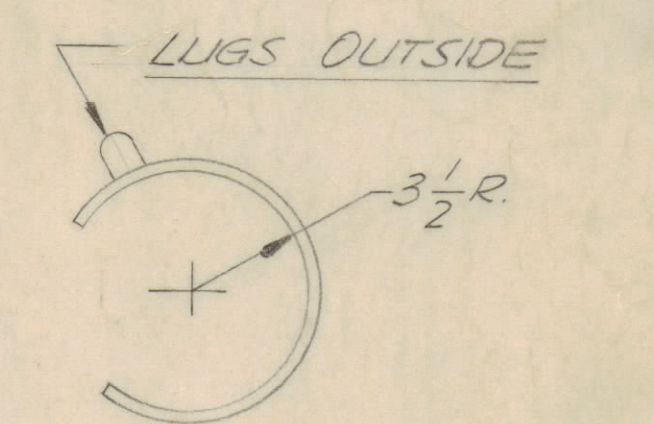


REVISIONS							
E.M.N.O	DRAFT	CHKD	ZONE	LTR	DESCRIPTION	DATE	APPROVED
				X	EXP RELEASE	8/2/70	
				B	ORIGINAL RELEASE FOR PRODUCTION	10/15/70	
20156	R#	(U)		A	ADD, 1/2 & 1/16 DIM, ON TOP VIEW	12-9-70	P.E.H.
20241	GE	(U)		B	ADD 1-F, 1-M, 1-G HOLE	2/18/71	P.E.H.
20271	R#	(U)		C	REPOSITIONED 2"B HOLES	3-10-71	P.E.H.



HOLE	DESCRIPTION	REQ.
A	9/64 DIA.	5
B	11/64 DIA.	8
C	.191-.194 DIA	18
D	1-3/4 DIA	1
E	3/32 x 5/8 SLOT	1
F	5/16 DIA.	3
G	1/4 DIA.	5
H	0632 C'SINK	6
J	.161-.164 DIA.	2
K	5/8 DIA.	1
L	0440 C'SINK	4
M	11/64 x 11/32 SLT.	1



DETAIL NOTES  
 MATERIAL .051 ALUMINUM 5052 - H32  
 FINISH S404 YEL. IRIDITE  
 BEND TO 3 1/2 RADIUS, LUGS AND LIP OUTSIDE

QTY. REQ.	ITEM	PART NO.	DESCRIPTION	SYMBOL
4	3	TE 167	BRACKET, ANGLE	
18	2	NT129-0632-4	NUT, ROUND, SWAGE TYPE	C
2	1	NT129-0440-4	NUT ROUND, SWAGE TYPE	J

FINAL APPROVAL		DATE		LIST OF MATERIAL	
F. BUDETTI		12/27/70		THE TECHNICAL MATERIEL CORP. MAMARONECK, NEW YORK	
MECH. DES. AP		12/27/70		CHASSIS, R.F.	
ELECT. DES.		DATE		SIZE CODE IDENT NO. DWG NO.	
CHECKED		DATE		D 82679 MS 5668	
DRAWN G. J. HINT		8/7/70		ISSUE	
				C	
				SCALE 1:1 SHEET OF	

- UNLESS OTHERWISE SPECIFIED:
- USE MATERIAL THICKNESS FOR MAXIMUM RADIUS ON ALL BENDS.
  - ALL ANGULAR BENDS 90 DEGREES.
  - REMOVE ALL BURRS AND SHARP EDGES.
  - MOUNT INSERTS AFTER FINISHING.

1	TLAM-1K	BMA 449
QTY / UNIT	MODEL USED ON	ASS'Y NO.
APPLICATION		
CODE		
MATERIAL .064 ALUM 5052 - H32		
FINISH S404 YEL. IRIDITE		

NOTICE TO PERSONS RECEIVING THIS DRAWING  
 THE TECHNICAL MATERIEL CORPORATION claims proprietary right in the material disclosed herein. This drawing is issued in confidence for engineering information only and may not be reproduced or used to manufacture anything shown hereon without permission from THE TECHNICAL MATERIEL CORPORATION to the user. This drawing is loaned for mutual assistance and is subject to recall at any time.

MARK TMC PART NUMBER  
 1/8 HIGH GOTHIC WITH LATEST  
 REVISION LETTER