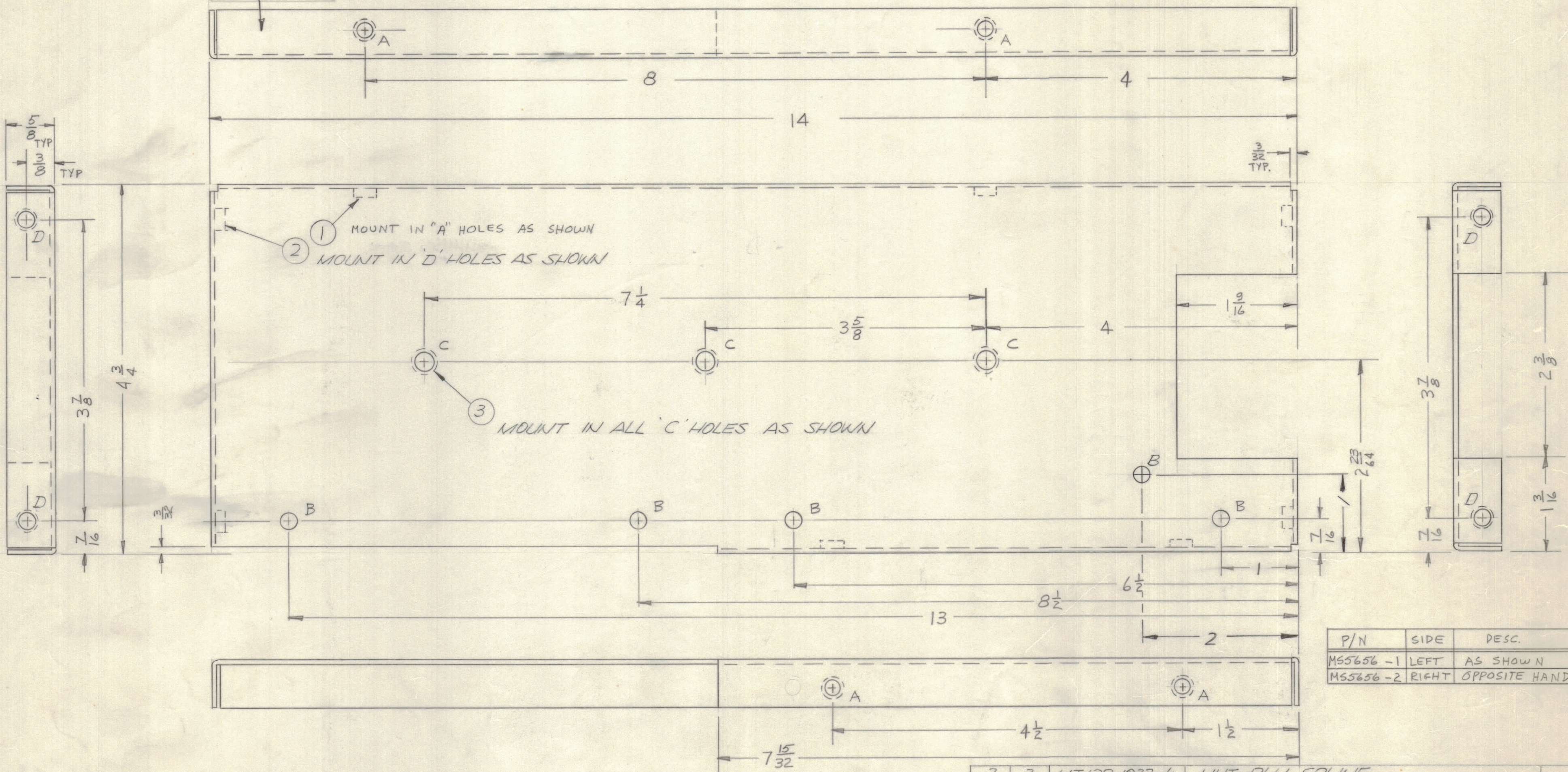


| REVISIONS | | | | | | | |
|-----------|-------|------|------|-----|---|---------|----------|
| E.M.N.NO | DRAFT | CHKD | ZONE | LTR | DESCRIPTION | DATE | APPROVED |
| | | | | Ø | ORIGINAL RELEASE FOR PRODUCTION | 9/1/70 | |
| 20000 | GE | W | | A | CHG. C HOLE HEIGHT FRM 2 31/64 TO 2 23/64 | 10/6/70 | J.B.W. |
| 20308 | GE | W | | B | ADD ITEMS 2 & 3 | 3/31/71 | P.E.A. |
| 20606 | GE | EJ | | C | ADDED ONE 'B' HOLE | 4-19-72 | CP |

MARK TMC PART NUMBER
1/8 HIGH GOTHIC WITH LATEST
REVISION LETTER



| P/N | SIDE | DESC. |
|----------|-------|---------------|
| M55656-1 | LEFT | AS SHOWN |
| M55656-2 | RIGHT | OPPOSITE HAND |

A ~ .191-.194 DIA. 4 REQ.
B ~ 13/64 DIA. 5 REQ.
C ~ .250-.254 D. 3 REQ.
D ~ .221-.224 D. - 4 REQ.

| QTY. REQ. | ITEM | PART NO. | DESCRIPTION | SYMBOL |
|-----------|------|--------------|------------------|--------|
| 3 | 3 | NT129-1032-4 | NUT, PLN, SPLINE | |
| 4 | 2 | NT129-0832-4 | NUT, PLN, SPLINE | |
| 4 | 1 | NT129-0632-4 | NUT, PLN, SPLINE | |

BUDETTI LIST OF MATERIAL

| | | | |
|----------------|----------------|---|-------|
| FINAL APPROVAL | DATE | THE TECHNICAL MATERIEL CORP. MAMARONECK, NEW YORK PLATE, SIDE | |
| MECH. DES. | DATE | | |
| ELECT. DES. | DATE | | |
| CHECKED | DATE | | |
| DRAWN | DATE | | |
| SIZE | CODE IDENT NO. | DWG NO. | ISSUE |
| C | 82679 | M55656 | C |
| SCALE | SHEET | | OF |

UNLESS OTHERWISE SPECIFIED
DIMENSIONS ARE IN INCHES
AND INCLUDE CHEMICALLY APPLIED
OR PLATED FINISHES

TOLERANCES ON

| | |
|-------------|-----------|
| DECIMALS | FRACTIONS |
| .X ± .05 | ± 1/64 |
| .XX ± .01 | ANGLES |
| .XXX ± .005 | ± 0° -30' |

MATERIAL .064 ALUM
5052-H32

FINISH
S404 YEL IRID.

| QTY / UNIT | MODEL USED ON | ASS'Y NO. |
|-------------|---------------|-----------|
| 1 | AP 151 | |
| 1 | AP 149 | |
| APPLICATION | | |
| | CODE | |

NOTICE TO PERSONS RECEIVING THIS DRAWING
THE TECHNICAL MATERIEL CORPORATION claims proprietary right in the material disclosed hereon. This drawing is issued in confidence for engineering information only and may not be reproduced or used to manufacture anything shown hereon without permission from THE TECHNICAL MATERIEL CORPORATION to the user. This drawing is loaned for mutual assistance and is subject to recall at any time.

- UNLESS OTHERWISE SPECIFIED:
- USE MATERIAL THICKNESS FOR MAXIMUM RADIUS ON ALL BENDS.
 - ALL ANGULAR BENDS 90 DEGREES.
 - REMOVE ALL BURRS AND SHARP EDGES.
 - MOUNT INSERTS AFTER FINISHING.