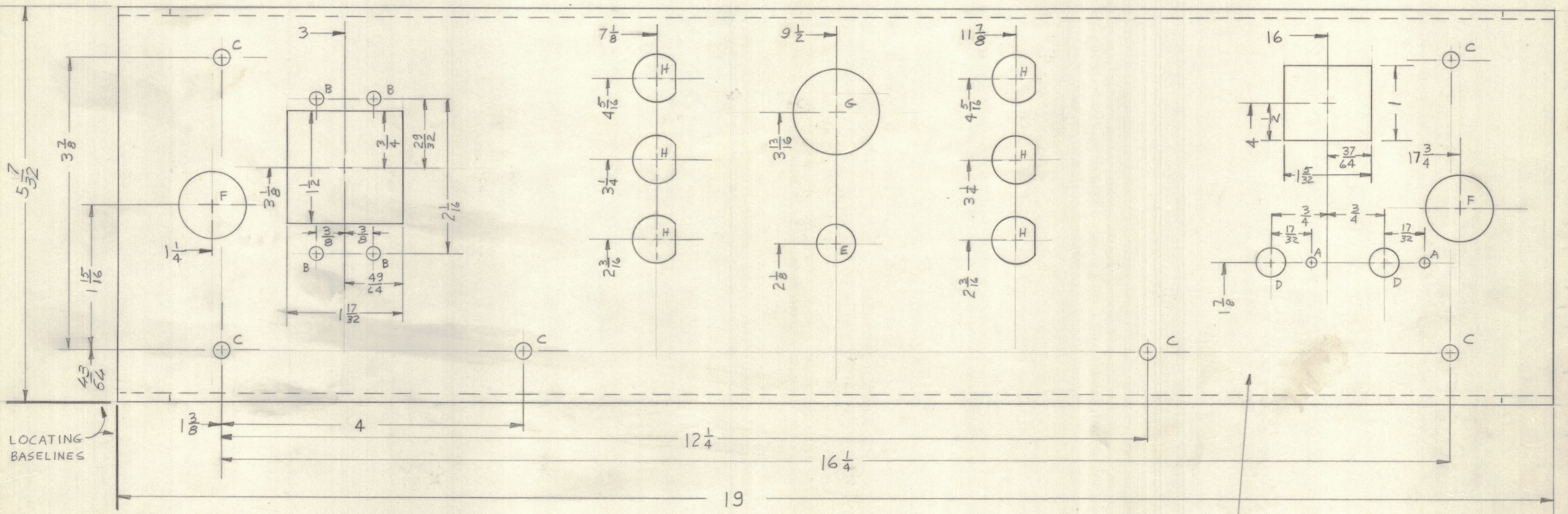
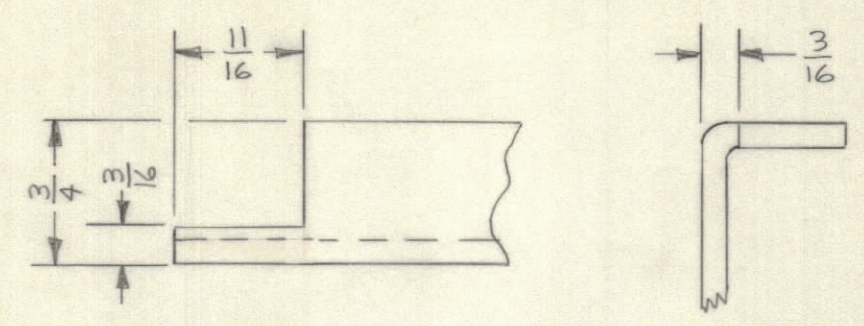
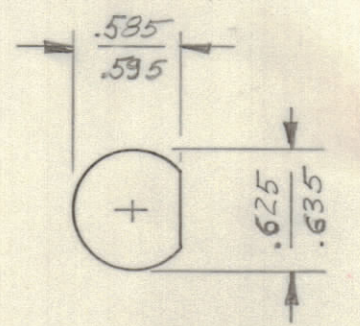


REVISIONS							
E.M.N.NO	DRAFT	CHKD	ZONE	LTR	DESCRIPTION	DATE	APPROVED
	Q			Ø	ORIGINAL RELEASE FOR PRODUCTION	9/1/70	
20000	GE	W		A	HEIGHT DIM. 5/7/32 WAS 5/15/64	10/6/70	FB W



- A ~ 1/8 DIA. 2 REQ.
- B ~ 1/24 DIA. 4 REQ.
- C ~ 13/64 DIA. 6 REQ.
- D ~ 3/8 DIA. 2 REQ.
- E ~ 1/2 DIA. 1 REQ.
- F ~ 7/8 DIA. 2 REQ.
- G ~ 1/8 DIA. 1 REQ.



**FINISH NOTES:**

- S404 - IRIDITE 14-2 AL-COAT.
- S114 - ZINC CHROMATE PRIMER } FRONT AND
- S115 - SMOOTH GRAY ENAMEL } EDGES ONLY

OR  
PRIME AND PAINT PER CUSTOMER'S SPECIFICATIONS.

REF:LD2415

AP-149		
QTY / UNIT	MODEL USED ON	ASS'Y NO.
APPLICATION		
CODE		

**NOTICE TO PERSONS RECEIVING THIS DRAWING**  
 THE TECHNICAL MATERIEL CORPORATION claims proprietary right in the material disclosed herein. This drawing is issued in confidence for engineering information only and may not be reproduced or used to manufacture anything shown hereon without permission from THE TECHNICAL MATERIEL CORPORATION to the user. This drawing is loaned for mutual assistance and is subject to recall at any time.

UNLESS OTHERWISE SPECIFIED DIMENSIONS ARE IN INCHES AND INCLUDE CHEMICALLY APPLIED OR PLATED FINISHES	
TOLERANCES ON	
DECIMALS	FRACTIONS
.X ± .05	± 1/64
.XX ± .01	ANGLES
.XXX ± .005	± 0° -30'
MATERIAL 1/8 ALUM	
5052-H32	
FINISH	
SEE NOTE	

QTY. REQ.	ITEM	PART NO.	DESCRIPTION	SYMBOL
BUDETTI LIST OF MATERIAL				
FINAL APPROVAL <i>[Signature]</i>		DATE 9/1/70	THE TECHNICAL MATERIEL CORP. MAMARONECK, NEW YORK	
MECH. DES. <i>[Signature]</i>		DATE 28 AUG 70		
ELECT. DES.		DATE		
CHECKED		DATE		
DRAWN <i>[Signature]</i>		DATE 25 JUL 70	PANEL, FRONT	
SIZE	CODE	IDENT NO.	DWG NO.	ISSUE
C	82679		MS5654	A
SCALE			SHEET	OF