

APPLICATION

QTY MODEL USED ON ASS'Y NO. LTR DESCRIPTION

1 PALA 10 K

X

EXP. RELEASE  
ORIGINAL RELEASE

REVISIONS

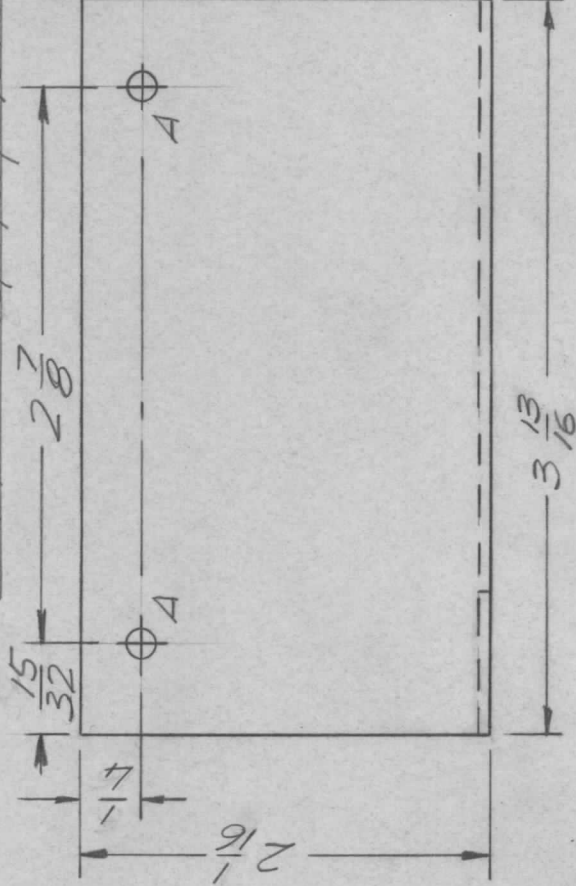
DATE E.M.N. NO DRAFT CHKD APPD

2/19/70  
2/16/70  
6/3/70  
4/25/70

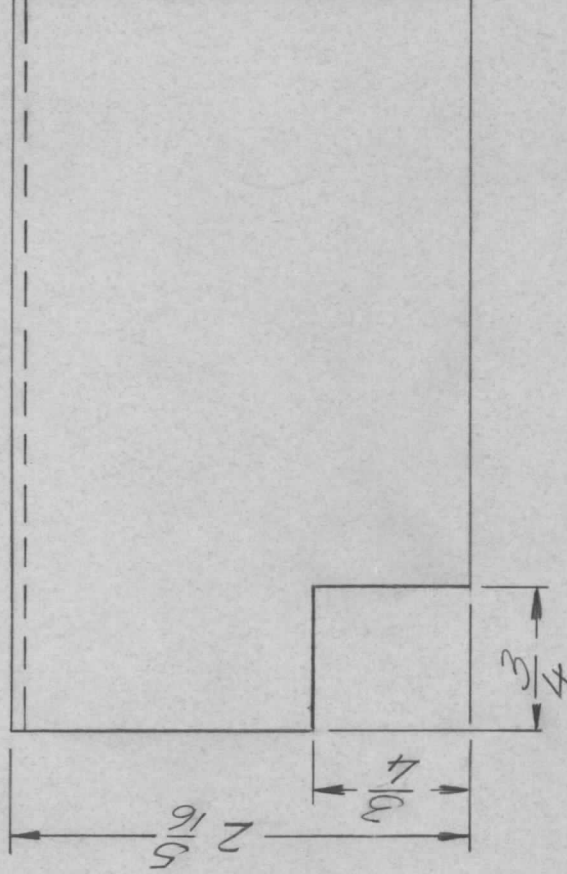
19875  
21018

GE  
DE  
KL  
RE

APPD



A' HOLES  
9/64 DIA.  
2 REQ.



UNLESS OTHERWISE SPECIFIED DIMENSIONS ARE IN INCHES AND INCLUDE CHEMICALLY APPLIED OR PLATED FINISHES

DECIMALS ± .05  
XX ± .01  
.XXX ± .005

FRACTIONS 1/64

TOLS. ANGLES 9°-30°

MATERIAL, 051 ALUM

FINISH S404  
YEL. IRIDITE

REQ'D ITEM PART NUMBER DESCRIPTION

F. BUDETTI

LIST OF MATERIAL

SYM.

FINAL APPROVAL DATE 2/9/70  
MECH. DES. A P DATE 2/9/70  
ELECT. DES. DATE  
CHECKED DATE  
DRAWN EVANGELIST DATE 2/9/70

THE TECHNICAL MATERIEL CORP.  
MAMARONECK, NEW YORK

DRIVE UP COVER

NOTICE TO PERSONS RECEIVING THIS DRAWING  
THE TECHNICAL MATERIEL CORPORATION claims proprietary right in the material disclosed hereon. This drawing is issued in confidence for engineering information only and may not be reproduced or used to manufacture anything shown hereon without permission from THE TECHNICAL MATERIEL CORPORATION to the user. This drawing is loaned for mutual assistance and is subject to recall at any time.

SIZE CODE IDENT. NO. DWG NO.

A 82679 MS 5638

ISSUE

B