

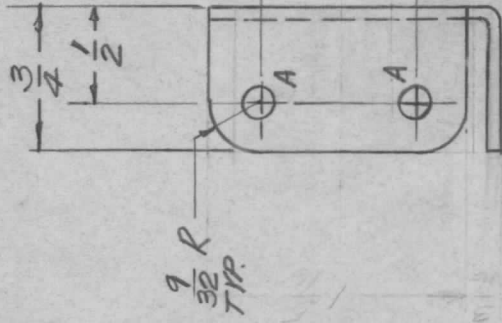
APPLICATION

QTY	MODEL USED ON	ASS'Y NO.	LTR
7	AF 110		Ø
			A
			B

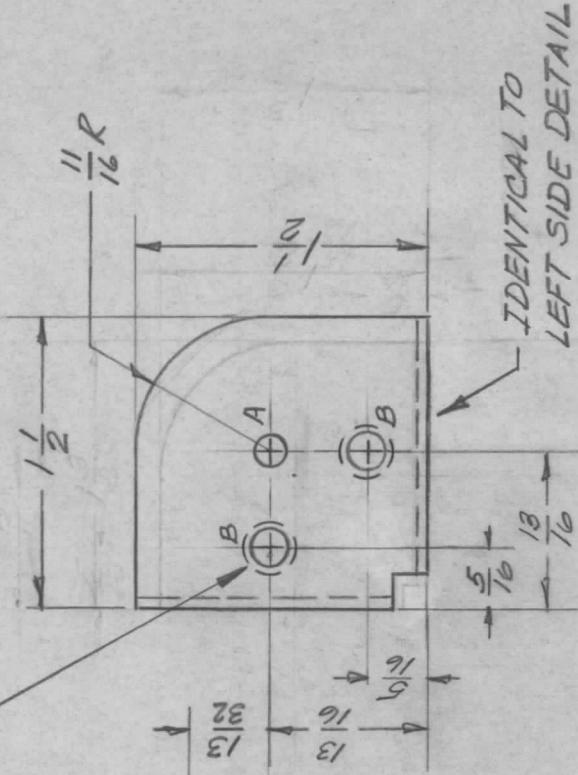
REVISIONS

DESCRIPTION	DATE	E.M.N.NO	DRAFT	CHKD	APPD
ORIG RELEASE FOR PROD	5/24/70		CV		
ADD. NOTE IT. 1 MTG.	8-2-72	20771	GE	g	g
PART NO. OF ITEM 1 CHANGED	1-25-78	2-16-22	K.P.	J.B.	*

LEFT SIDE  
DETAIL



1 MOUNT IN ALL  
'B' HOLES AS SHOWN.



HOLE	DESCRIPTION	RECD
A	5/32 DIA.	5
B	.221-.224 DIA	2

2	1	NT-129-832-4	NUT, SPLINE	B
REQ'D ITEM	PART NUMBER	DESCRIPTION	SYM.	

F. BIUDETTI		LIST OF MATERIAL	
FINAL APPROVAL	DATE	THE TECHNICAL MATERIEL CORP.	
Mech. Des. J. ANGER	5/25/70	MAMARONECK, NEW YORK	
Elect. Des.	1/26/70	BRACKET, CAP. MTG.	
CHECKED	DATE		
DRAWN J. ANGER	1/26/70		

UNLESS OTHERWISE SPECIFIED DIMENSIONS ARE IN INCHES AND INCLUDE CHEMICALLY APPLIED OR PLATED FINISHES
DECIMALS
x ± .05
.xx ± .01
.xxx ± .005
FRACTIONS
1/64
TOLS.
ANGLES
0°-30°
MATERIAL 5052 H32
1/16 THICK ALUMINUM
FINISH S404
YELLOW IRIDITE

SIZE	CODE IDENT. NO.	DWG NO.	ISSUE
A	82679	MS-5636	B
SCALE 1:1		SHEET 1 OF 1	

NOTICE TO PERSONS RECEIVING THIS DRAWING  
THE TECHNICAL MATERIEL CORPORATION claims proprietary right in the material disclosed hereon. This drawing is issued in confidence for engineering information only and may not be reproduced or used to manufacture anything shown hereon without permission from THE TECHNICAL MATERIEL CORPORATION to the user. This drawing is loaned for mutual assistance and is subject to recall at any time.