

## APPLICATION

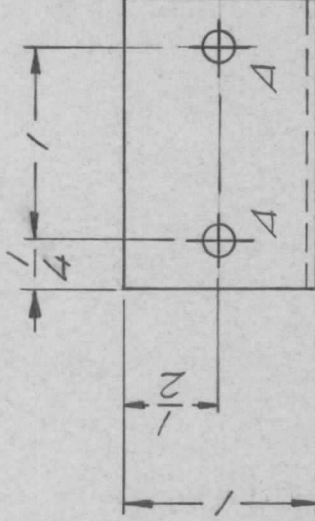
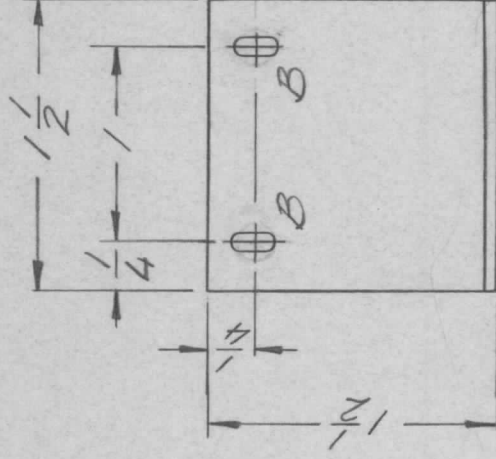
QTY  
MODEL USED ON  
PALA-10K

ASS'Y NO.  
AX5085

LTR  
X

## REVISIONS

DESCRIPTION	DATE	E.M.N. NO	DRAFT	CHKD	APPD
EXP RELEASE	1-9-70		GE		
ORIGINAL RELEASE	1/14/70		W		



HOLE A 13/64 DIA 2 REQ.

HOLE B 1/8 X 1/4 SLOT 2 REQ.

UNLESS OTHERWISE SPECIFIED  
DIMENSIONS ARE IN INCHES  
AND INCLUDE CHEMICALLY APPLIED  
OR PLATED FINISHES

DECIMALS  
X ± .05  
XX ± .01  
XXX ± .005

FRACTIONS  
1/64  
TOLS.  
ANGLES  
0°-30°

MATERIAL .064

FINISH YEL. IRIDITE

REQ'D ITEM	PART NUMBER	DESCRIPTION	SYM.
F. BUDETTI			
FINAL APPROVAL	DATE	LIST OF MATERIAL	
<i>ALP</i>	H3-70	THE TECHNICAL MATERIEL CORP.	
MECH. DES.	DATE	MAMARONECK, NEW YORK	
ELECT. DES.	DATE	BRACKET, MICRO SW. MTG.	
CHECKED	DATE		
DRAWN	DATE		
<i>EVANGELIST</i>	1-13-70		

NOTICE TO PERSONS RECEIVING THIS DRAWING  
THE TECHNICAL MATERIEL CORPORATION claims proprietary right in the material disclosed hereon. This drawing is issued in confidence for engineering information only and may not be reproduced or used to manufacture anything shown hereon without permission from THE TECHNICAL MATERIEL CORPORATION to the user. This drawing is loaned for mutual assistance and is subject to recall at any time.

SIZE	CODE IDENT. NO.	DWG NO.	ISSUE
A	82679	MS 5632	Ø
SCALE	SHEET	OF	