

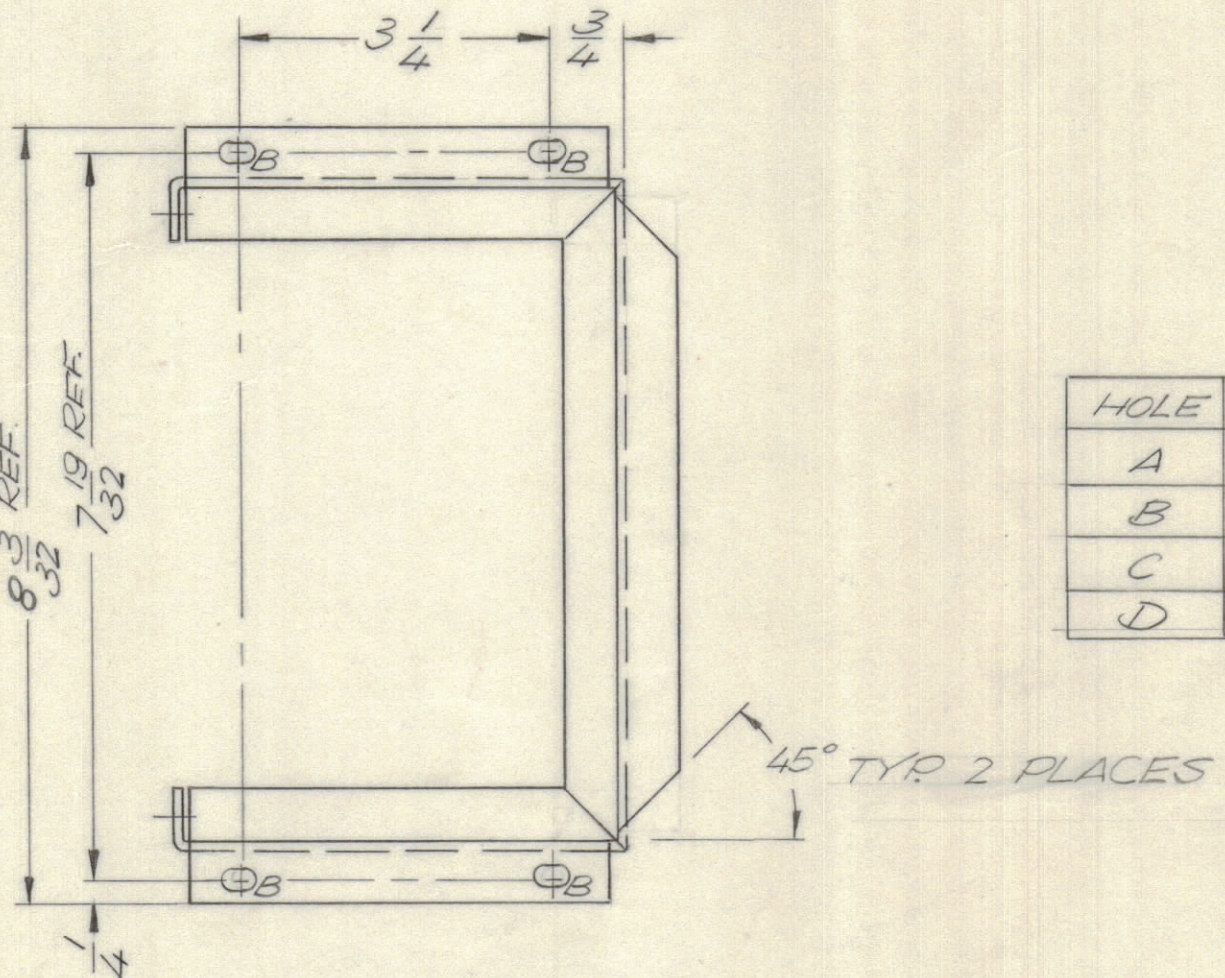
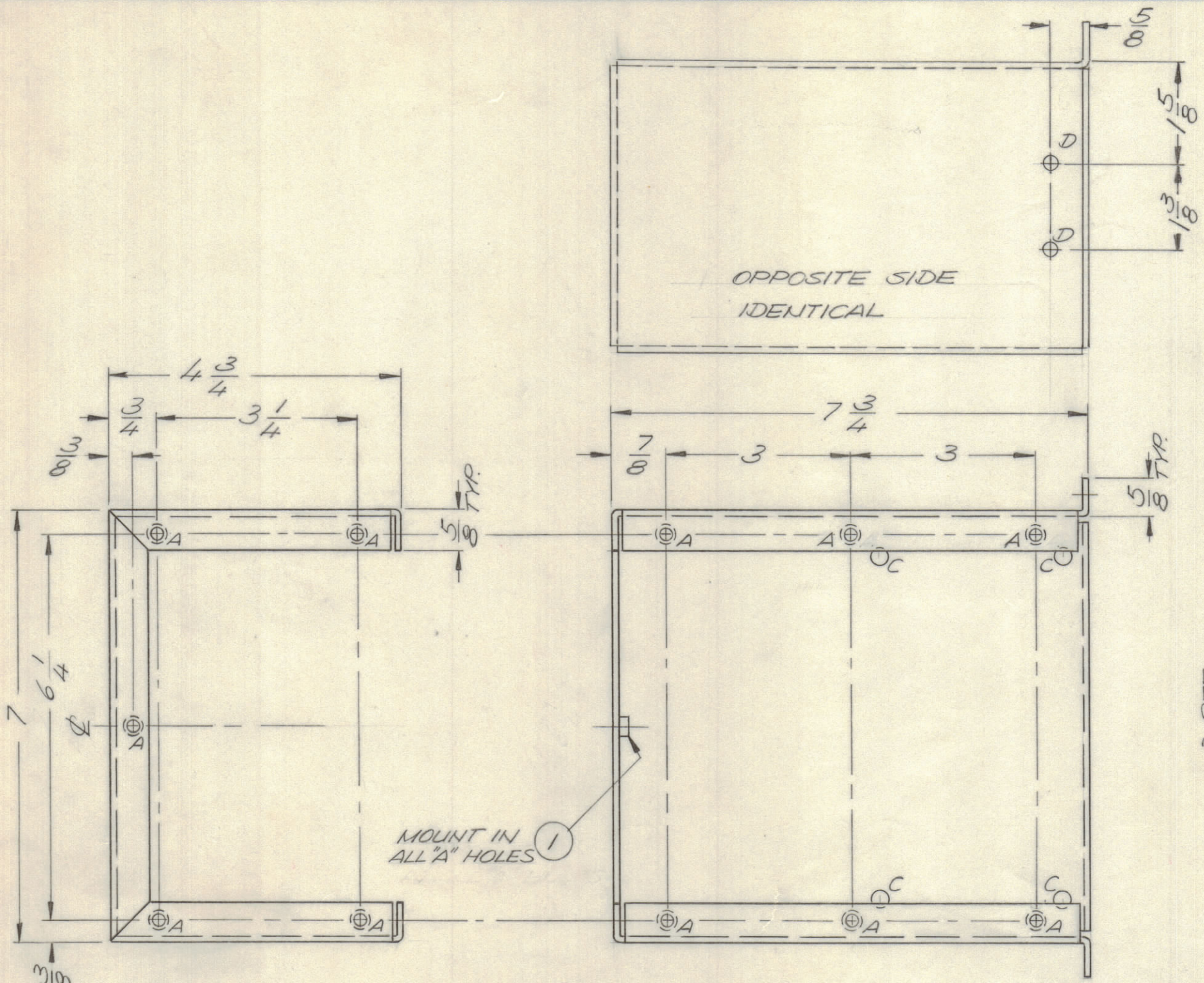
4

3

2

1

REVISIONS							
E.M.N.NO	DRAFT	CHKD	ZONE	LTR	DESCRIPTION	DATE	APPROVED
	GH			X3	REDRAWN	10/16/69	
	W			Ø	ORIGINAL RELEASE FOR PRODUCTION	1/14/70	
	GE	(W)		A	ADDED 45° NOTCH TO LIP	3/20/70	(W)
20694	GE	Ø		B	ADD SIDE VIEW & D HOLES	5/15/72	Ø



HOLE	DESCRIPTION	REQ.
A	.221 .224 DIA.	11
B	7/32 x 7/16 SLOT	4
C	3/16 DIA.	4
D	13/64 DIA.	4

MOUNT IN ALL "A" HOLES

MOUNT IN ALL "C" HOLES ATTACHED TO OPPOSITE SIDE

QTY / UNIT	MODEL USED ON	ASS'Y NO.
1	HEL (-) - 10K	AX5114
1	PALA 10K	AX5084

APPLICATION

CODE

NOTICE TO PERSONS RECEIVING THIS DRAWING
 THE TECHNICAL MATERIEL CORPORATION claims proprietary right in the material disclosed hereon. This drawing is issued in confidence for engineering information only and may not be reproduced or used to manufacture anything shown hereon without permission from THE TECHNICAL MATERIEL CORPORATION to the user. This drawing is loaned for mutual assistance and is subject to recall at any time.

REF: LD2389

UNLESS OTHERWISE SPECIFIED DIMENSIONS ARE IN INCHES AND INCLUDE CHEMICALLY APPLIED OR PLATED FINISHES

TOLERANCES ON

DECIMALS	FRACTIONS
.X ± .05	± 1/64
.XX ± .01	ANGLES
.XXX ± .005	± 0° -30'

MATERIAL .081 ALLUM.
5052 - H32

FINISH IRIDITE

QTY. REQ.	ITEM	PART NO.	DESCRIPTION	SYMBOL
4	2	TE108-20	STANDOFF, RIVET TYPE	C
11	1	NT129-832-4	NUT, PLN. SPLINE	A

F. BUDETTI

FINAL APPROVAL [Signature] DATE 1-12-70

MECH. DES. [Signature] DATE 1-12-70

ELECT. DES. DATE

CHECKED DATE

DRAWN [Signature] DATE 10/16/69

LIST OF MATERIAL

THE TECHNICAL MATERIEL CORP.
MAMARONECK, NEW YORK

CHASSIS CAP TUNE

SIZE	CODE IDENT NO.	DWG NO.	ISSUE
C	82679	MS5605	B

SCALE 1:2 SHEET OF

4

3

2

1

MS5605