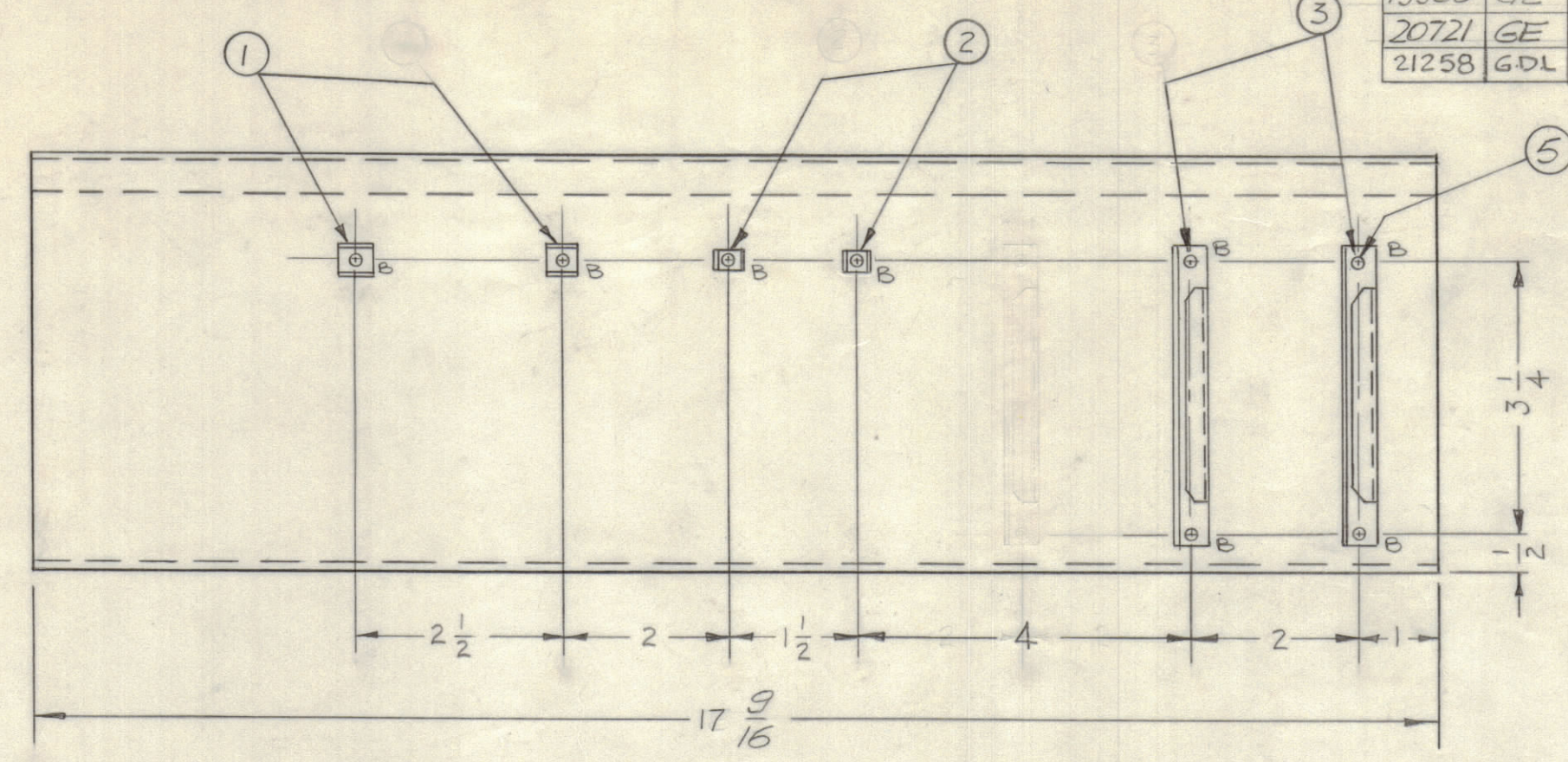
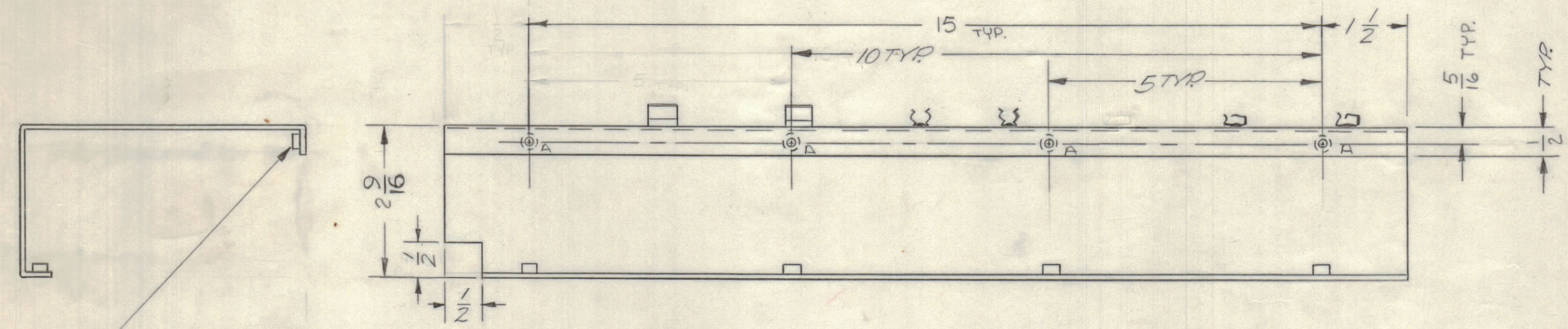


REVISIONS							
E.M.N.NO	DRAFT	CHKD	ZONE	LTR	DESCRIPTION	DATE	APPROVED
	RE			X	DELE ONE RETAINER & ADD 5/8 NOTCH	8-21-69	OB
	W			Ø	ORIGINAL RELEASE FOR PRODUCTION	1/14/70	
19958	GE			A	RELOCATE A HOLE DIMENSIONING	8/20/70	W
20721	GE	g		B	ADD IT. NO. 5, ADD (TYP.) TO 1/2 DIMENSION	6/15/72	EP
21258	GDL	Y/B	B4	C	DIMS 2-9/16 WAS 2-5/8	7/14/75	OL

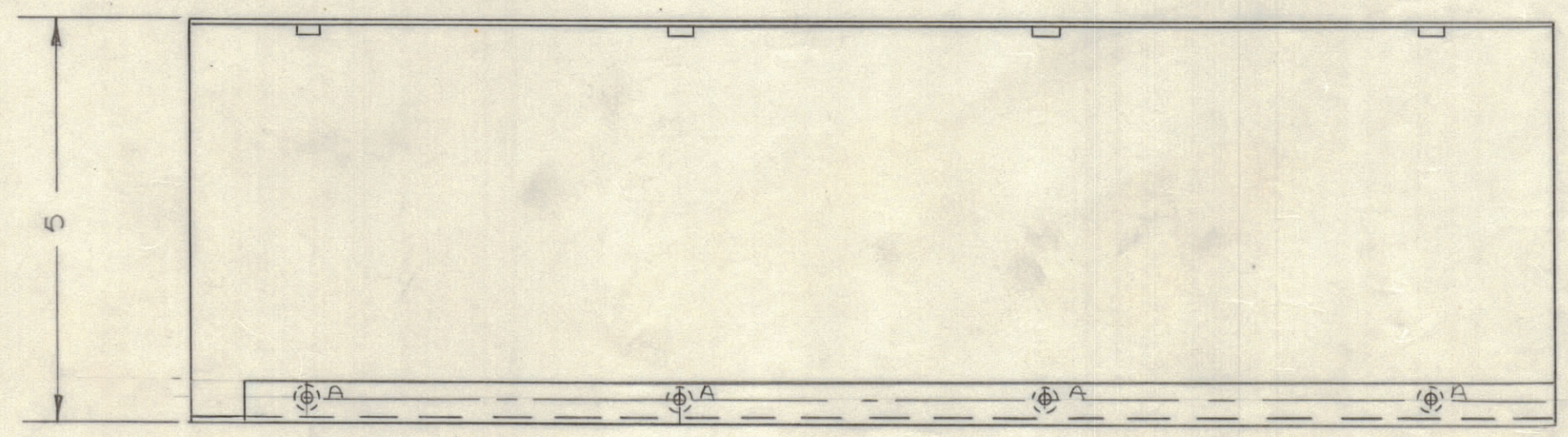


USE ITEM NO. 5 TO MOUNT ITEMS 1, 2 AND 3 AS SHOWN

HOLE	DESCRIPTION	REQ'D.
A	.191-.194 DIA.	8
B	.067 DIA.	8



ITEM 4 MOUNT IN ALL 'A' HOLES AS SHOWN.



QTY. REQ.	ITEM	PART NO.	DESCRIPTION	SYMBOL
8	5	EY100-5	EYELET	B
8	4	NT129-0632-4	NUT, ROUND, SWAGE TYPE	A
2	3	CU157-4	RETAINER, P.C. BOARD	B
2	2	CU133-5	CLIP, HEAT SINK	B
2	1	FC102-1XXN	FUSE CLIPS	

F. BUDETTI LIST OF MATERIAL

FINAL APPROVAL OB	DATE 1-12-70	<b>THE TECHNICAL MATERIEL CORP.</b> MAMARONECK, NEW YORK  DUCT, CABLE (EXCITER DRAWER)	
MECH. DES. ALP	DATE 1-12-70		
ELECT. DES. AGC	DATE 1-8-70		
CHECKED	DATE		
DRAWN RE	DATE		
SIZE	CODE IDENT NO.	DWG NO.	ISSUE
C	82679	MS5590	C
SCALE	SHEET		OF

UNLESS OTHERWISE SPECIFIED DIMENSIONS ARE IN INCHES AND INCLUDE CHEMICALLY APPLIED OR PLATED FINISHES

TOLERANCES ON  
 DECIMALS .X ± .05  
 .XX ± .01  
 .XXX ± .005  
 FRACTIONS ± 1/64  
 ANGLES ± 0° -30'

MATERIAL .064 ALUM 5052-H32  
 FINISH S404 YELLOW IRIDITE

1	HFTA 10K TR-10K	AX5094
QTY / UNIT	MODEL USED ON	ASS'Y NO.
APPLICATION		
CODE		
NOTICE TO PERSONS RECEIVING THIS DRAWING THE TECHNICAL MATERIEL CORPORATION claims proprietary right in the material disclosed herein. This drawing is issued in confidence for engineering information only and may not be reproduced or used to manufacture anything shown hereon without permission from THE TECHNICAL MATERIEL CORPORATION to the user. This drawing is loaned for mutual assistance and is subject to recall at any time.		

- UNLESS OTHERWISE SPECIFIED:
- USE MATERIAL THICKNESS FOR MAXIMUM RADIUS ON ALL BENDS.
  - ALL ANGULAR BENDS 90 DEGREES.
  - REMOVE ALL BURRS AND SHARP EDGES.
  - MOUNT INSERTS AFTER FINISHING.

MS5590 C B