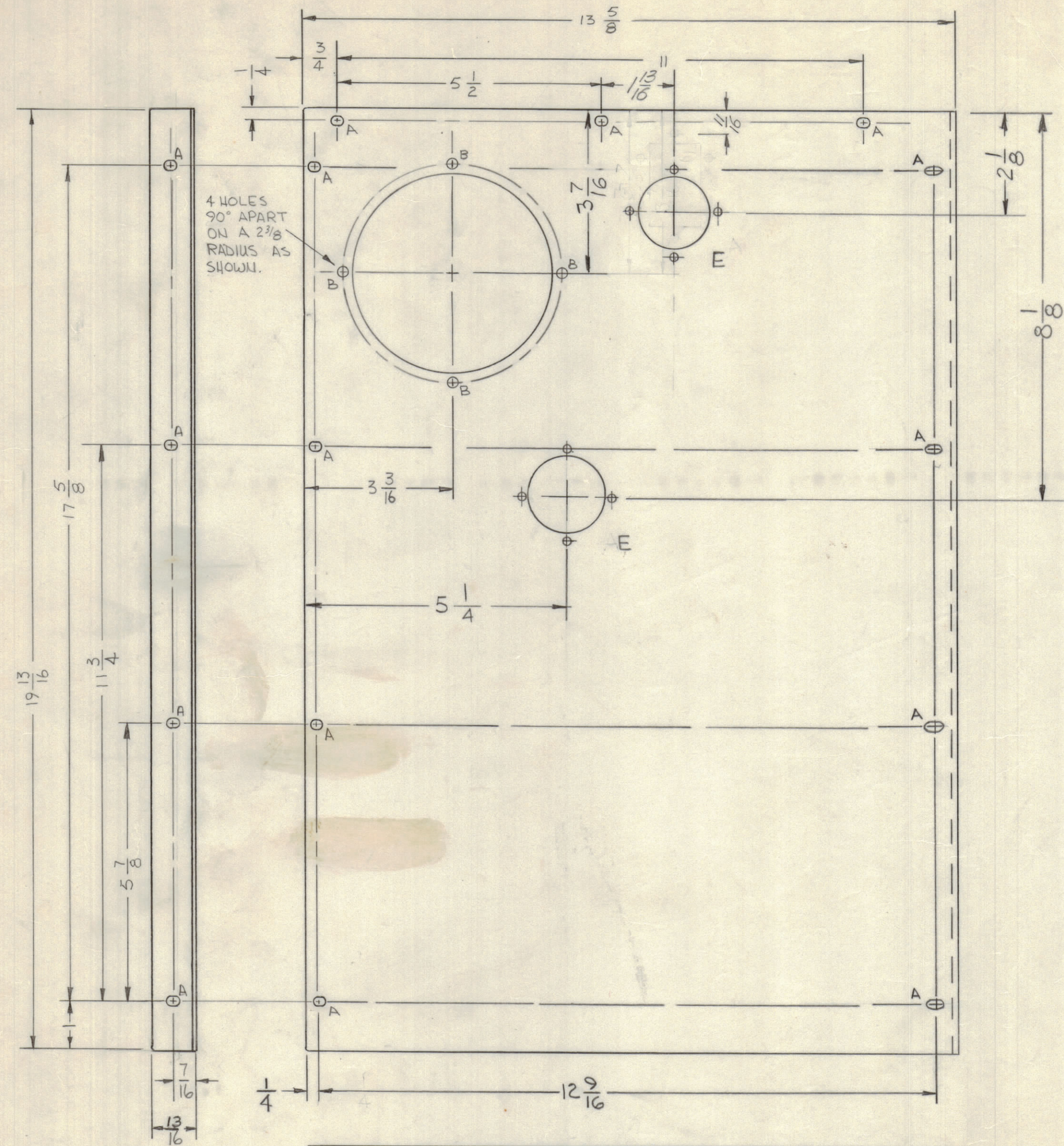
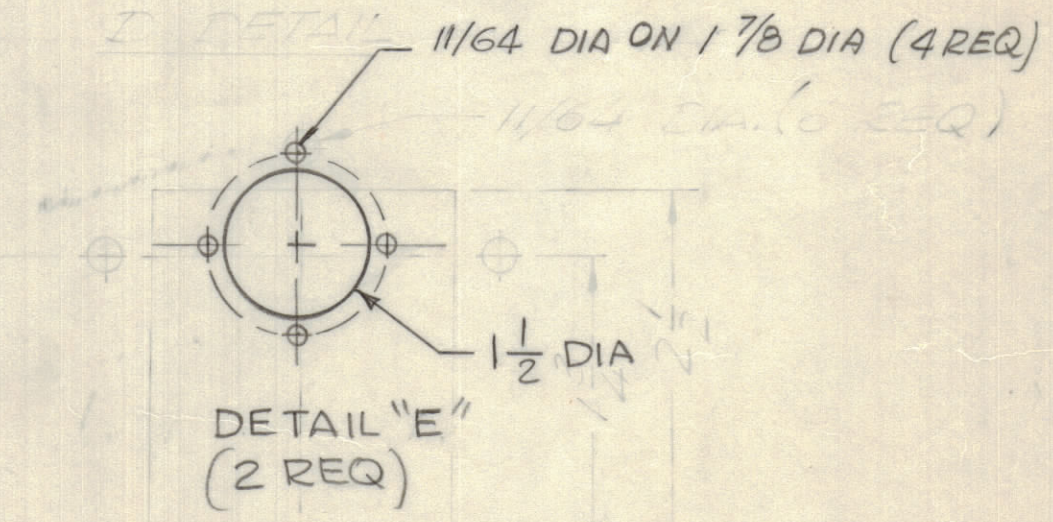


REVISIONS							
E.M.N.NO	DRAFT	CHKD	ZONE	LTR	DESCRIPTION	DATE	APPROVED
				Ø	ORIGINAL RELEASE FOR PRODUCTION	1/26/70	
20017	GE	W		A	ADD DETAIL D	10/24/70	P.E.B.
21268	G.D.L.	W		B	DETAIL "D" DELETED; ADD DETAIL "E"	7-11-75	CL



HOLE	DESCRIPTION	REQ'D
A	13/64 X 13/32 SLOT	15
B	3/16 DIA	4
C	4 3/8 DIA	1
D	" "	" "
E	SEE DETAIL	2



- UNLESS OTHERWISE SPECIFIED:
- USE MATERIAL THICKNESS FOR MAXIMUM RADIUS ON ALL BENDS.
 - ALL ANGULAR BENDS 90 DEGREES.
 - REMOVE ALL BURRS AND SHARP EDGES.

1	PALA-10K	AX5080
QTY / UNIT	MODEL USED ON	ASS'Y NO.
APPLICATION		
CODE		

NOTICE TO PERSONS RECEIVING THIS DRAWING
 THE TECHNICAL MATERIEL CORPORATION claims proprietary right in the material disclosed hereon. This drawing is issued in confidence for engineering information only and may not be reproduced or used to manufacture anything shown hereon without permission from THE TECHNICAL MATERIEL CORPORATION to the user. This drawing is loaned for mutual assistance and is subject to recall at any time.

UNLESS OTHERWISE SPECIFIED DIMENSIONS ARE IN INCHES AND INCLUDE CHEMICALLY APPLIED OR PLATED FINISHES

TOLERANCES ON
 DECIMALS .X ± .05
 .XX ± .01
 .XXX ± .005
 FRACTIONS ± 1/64
 ANGLES ± 0° -30'

MATERIAL .064 THICK ALUM 5052-H32
 FINISH S404 YELLOW IRIDITE

QTY. REQ.	ITEM	PART NO.	DESCRIPTION	SYMBOL
F. BUDETTI LIST OF MATERIAL				
FINAL APPROVAL		DATE	THE TECHNICAL MATERIEL CORP. MAMARONECK, NEW YORK	
MECH. DES.		DATE		
ELECT. DES.		DATE		
CHECKED		DATE		
DRAWN		DATE	COVER, TOP, LEFT SIDE (DRIVER DRAWER)	
SIZE		CODE IDENT NO.		
C		82679	MS5589	B
SCALE 1/2		SHEET		OF

MS5589 B B