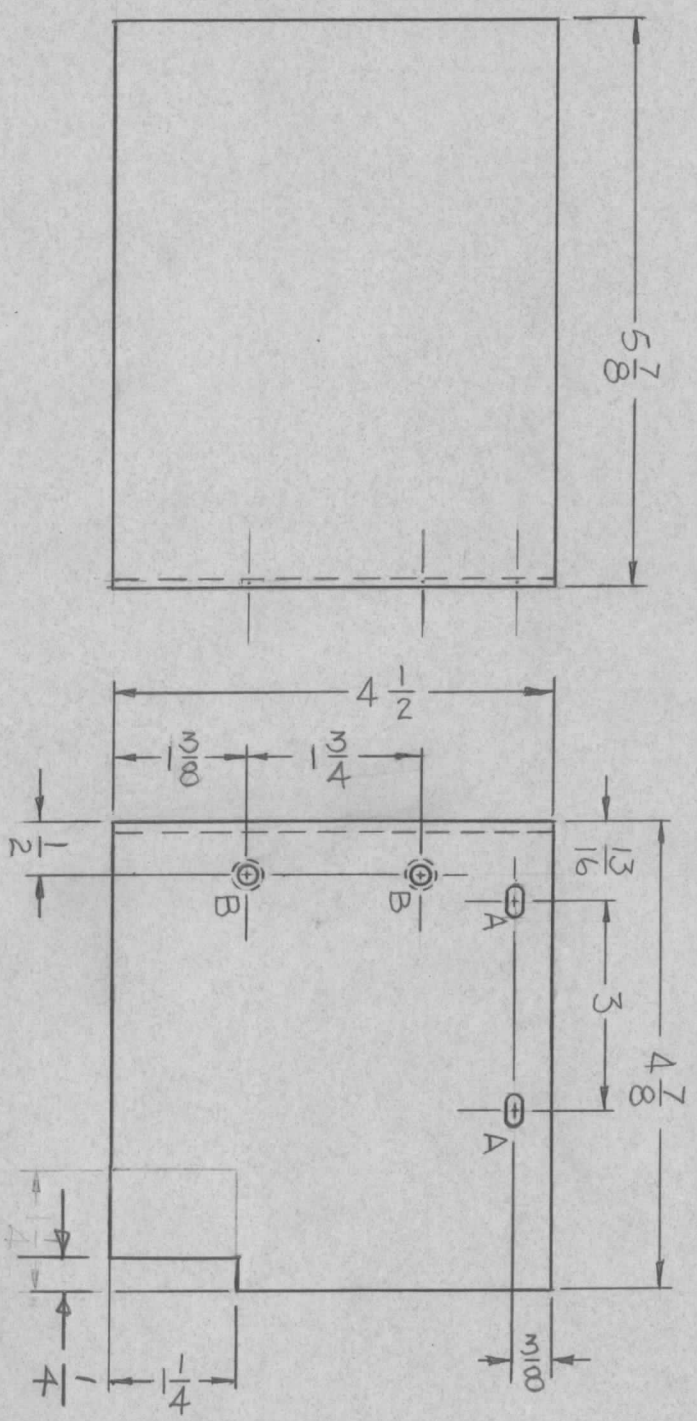
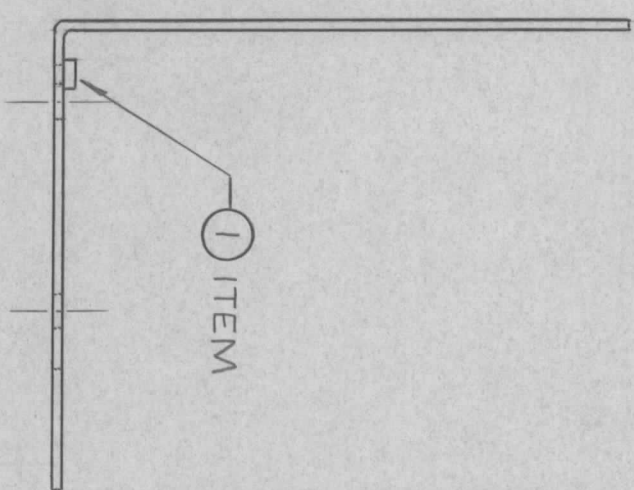


REVISIONS							
ZONE	LTR	DESCRIPTION	DATE	E.M.N.NO	DRAFT	CHKD	APPD
	Ø	ORIGINAL RELEASE	1/14/70				



HOLE	DESCRIPTION	REQ'D
A	5/32 x 5/16 SLOT	2
B	.191 - .194 DIA.	2

REQ'D ITEM	PART NUMBER	DESCRIPTION	SYM.
2	1	NT-129-632-6 NUT, ROUND, SWAGE TYPE	B

F. BUDETTI			
FINAL APPROVAL	MECH. DES.	ELECT. DES.	DATE
<i>[Signature]</i>	<i>[Signature]</i>	<i>[Signature]</i>	1-12-70
CHECKED	DATE	DATE	DATE
<i>[Signature]</i>			5.21.69

LIST OF MATERIAL			
QTY / UNIT	MODEL USED ON	ASS'Y NO.	CODE
1	PALA-10K	AX 5080	
APPLICATION			
MATERIAL			
ALUM .051			
FINISH S404			
YEL. IRIDITE			

UNLESS OTHERWISE SPECIFIED:

- USE MATERIAL THICKNESS FOR MAXIMUM RADIUS ON ALL BENDS.
- ALL ANGULAR BENDS 90 DEGREES.
- REMOVE ALL BURRS AND SHARP EDGES.
- MOUNT INSERTS AFTER FINISHING.

NOTICE TO PERSONS RECEIVING THIS DRAWING  
 THE TECHNICAL MATERIEL CORPORATION claims proprietary right in the material disclosed hereon. This drawing is issued in confidence for engineering information only and may not be reproduced or used to manufacture anything shown hereon without permission from THE TECHNICAL MATERIEL CORPORATION to the user. This drawing is loaned for mutual assistance and is subject to recall at any time.