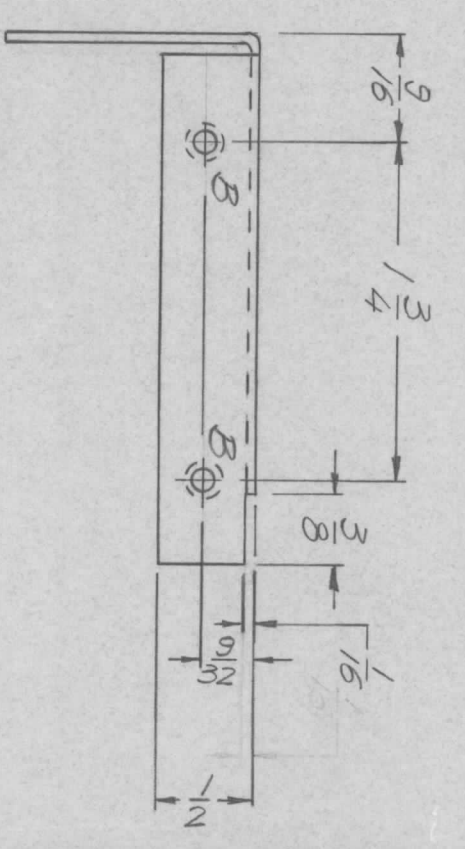
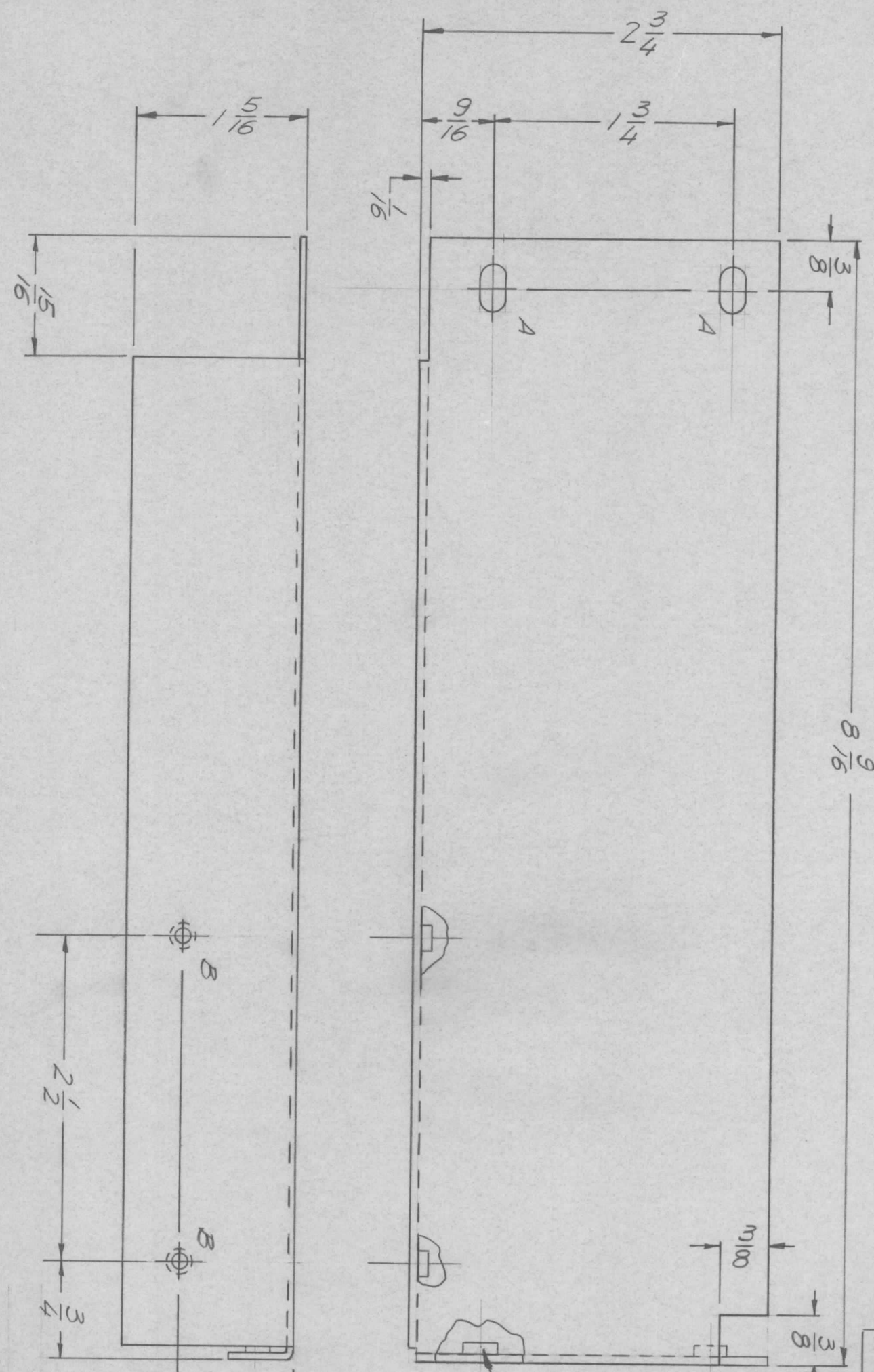


REVISIONS							
ZONE	LTR	DESCRIPTION	DATE	E.M.N. NO	DRAFT	CHKD	APPD
Ø		ORIGINAL RELEASE	1/30/70		GE		



HOLE	DESCRIPTION	QTY
A	3/16 X 3/8 SLOT	2
B	.191 ~ .194 DIA.	4

UNLESS OTHERWISE SPECIFIED

1. USE MATERIAL THICKNESS FOR MAX RADIUS ON ALL BENDS.
2. ALL ANGULAR BENDS 90°
3. REMOVE ALL BURRS AND SHARP EDGES.

1	QTY / UNIT	PALA 10 K	MODEL USED ON	4X 5080	ASSY NO.
		APPLICATION			
		CODE			

NOTICE TO PERSONS RECEIVING THIS DRAWING
 THE TECHNICAL MATERIEL CORPORATION claims proprietary right in the material disclosed hereon. This drawing is issued in confidence for engineering information only and may not be reproduced or used to manufacture anything shown hereon without permission from THE TECHNICAL MATERIEL CORPORATION to the user. This drawing is loaned for mutual assistance and is subject to recall at any time.

DECIMALS	FRACTIONS
.X ± .05	1/64
.XX ± .01	TOLS.
.XXX ± .005	ANGLES
	0° .30'

FINISH S404
 VEL. IRIDITE

4	1	NT 129-06323	NUT PLU SPLINE	B
REQ'D ITEM	PART NUMBER	DESCRIPTION	SYM.	

FINAL APPROVAL		DATE
MECH. DES. <i>ALP</i>		DATE <i>1/29/70</i>
ELECT. DES.		DATE
CHECKED		DATE
DRAWN <i>EVANGELIST</i>		DATE <i>1-27-70</i>

LIST OF MATERIAL			
THE TECHNICAL MATERIEL CORP.			
MAMARONECK, NEW YORK			
SHIELD, CAR. CAUSER			
SIZE	CODE IDENT. NO.	DWG NO.	ISSUE
B	82679	MS 5564	Ø
SCALE 1:1	SHEET		OF