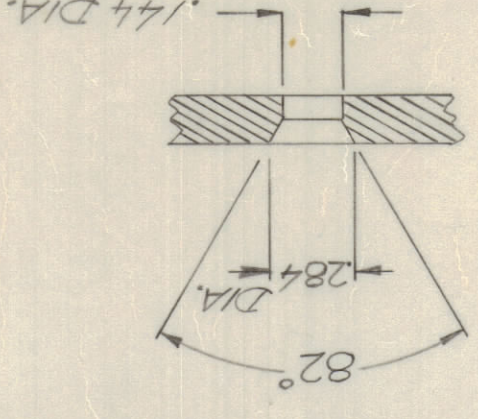


REQ	HOLE DESCRIPTION
3	A 1/64 DIA.
2	B 1/64 DIA.
9	C SEE DETAIL A
8	D .191-194 DIA.
4	E .250-.251 DIA.
7	F DRILL C SINK FOR #4
2	G 3/16 X 3/8 SLOT

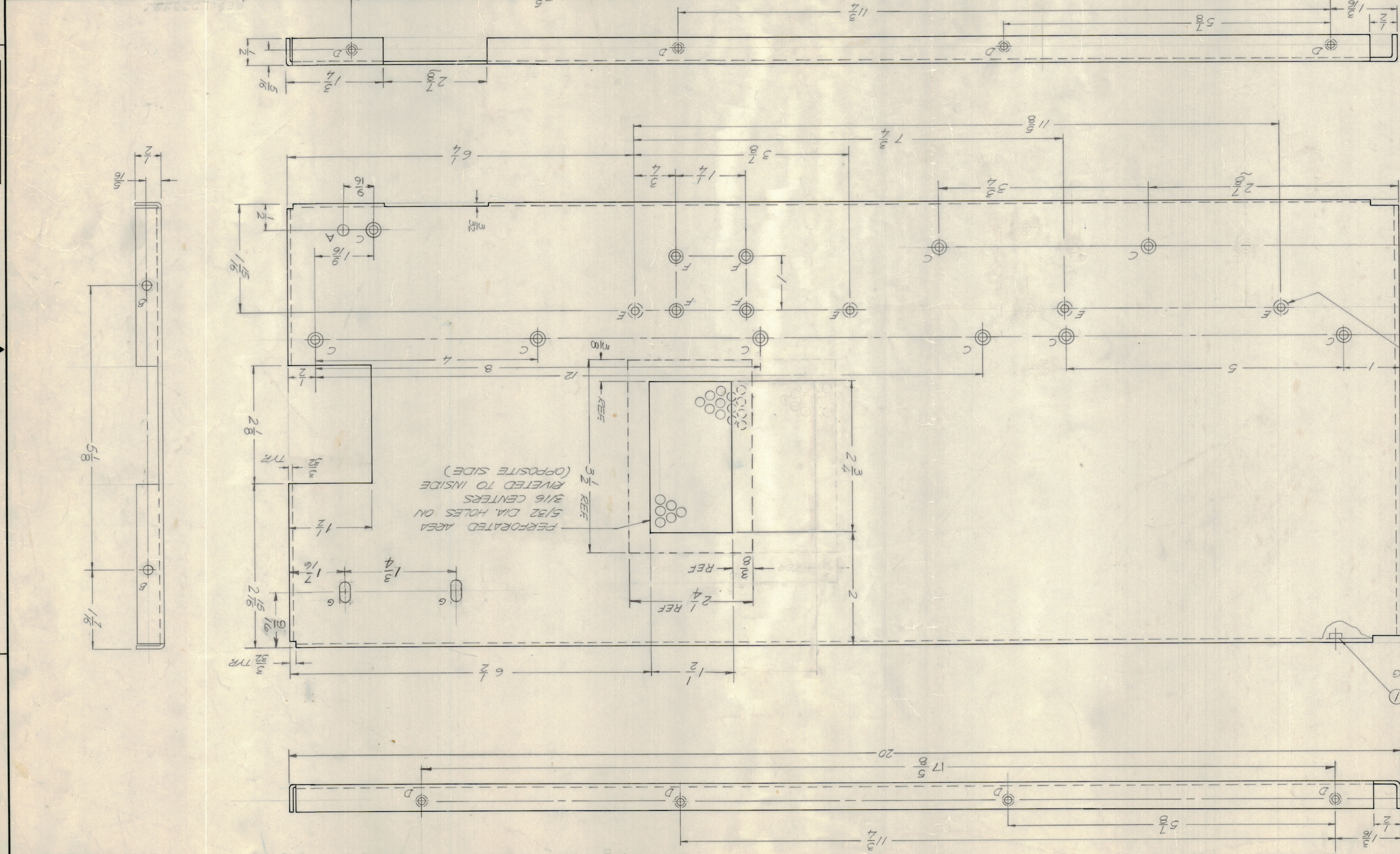


MOUNT NT 129-1032-4
IN ALL E HOLES AS
SHOWN AFTER
FINISHING
(OPPOSITE SIDE)

MOUNT NT 129-0632-4
IN ALL D HOLES AS
SHOWN, AFTER FINISHING

APPLICATION		
QTY / UNIT	MODEL USED ON	ASSY NO.
1	PALA-10K	BMA994
NOTICE TO PERSONS RECEIVING THIS DRAWING		
THE TECHNICAL MATERIAL CORPORATION has proprietary rights in the material disclosed herein and it is hereby agreed that the information contained herein is to be used only for the purpose intended and may not be reproduced or used for any other purpose without the prior written consent of THE TECHNICAL MATERIAL CORPORATION.		
MATERIAL		
5052 H32		
FINISH S144 YEL. IPDITE		
TOLERANCES ON		
UNLESS OTHERWISE SPECIFIED		
AND INCLUDE CHEMICALLY APPLIED		
DIMENSIONS ARE IN INCHES		
OR PLATED FINISHES		
DATE		
FINAL APPROVAL		
DATE		
MECH. DES.		
DATE		
ELECT. DES.		
DATE		
CHECKED		
DATE		
DRAWN		
DATE		
E.VANGELIST		
10-18-69		
SIZE	CODE IDENT NO.	DWG NO.
D	82679	M5558
SCALE 1/1		
SHEET OF		

REF: LD2399



ZONE	DATE	DESCRIPTION	E.M.N.O.	DRAFT	CHKD	ZONE	LTR
B6	11-15-69	CHG DIM 4 TO 2 7/8	B2/H	12/22	GE		
C	7/8/69	PERFORATED AREA WAS 5 X 2 3/4	B2/H	12/22	GE		
D	5-24-70	ONE 1/8" HOLE ADD	B2/H	21399	GE		
E	5-16-70	DIM. 9/16 ADD.	B2/H	21631	GD		
A REV. LOC LINE FOR DIM. 2 7/8 & 13/16							
5-15-78 COL							
REVISIONS							
DATE							
APPROVED							
EXP RELEASE							
ORIGINAL RELEASE FOR PRODUCTION							
11-4-70							
10-24-69							

M5558

1

A

B

C

D