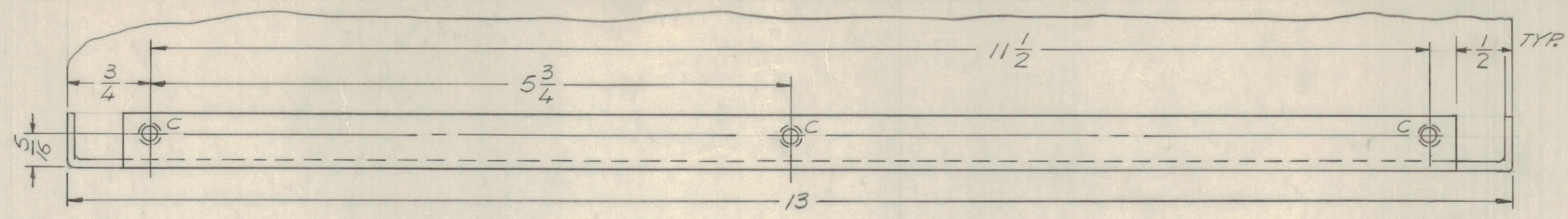
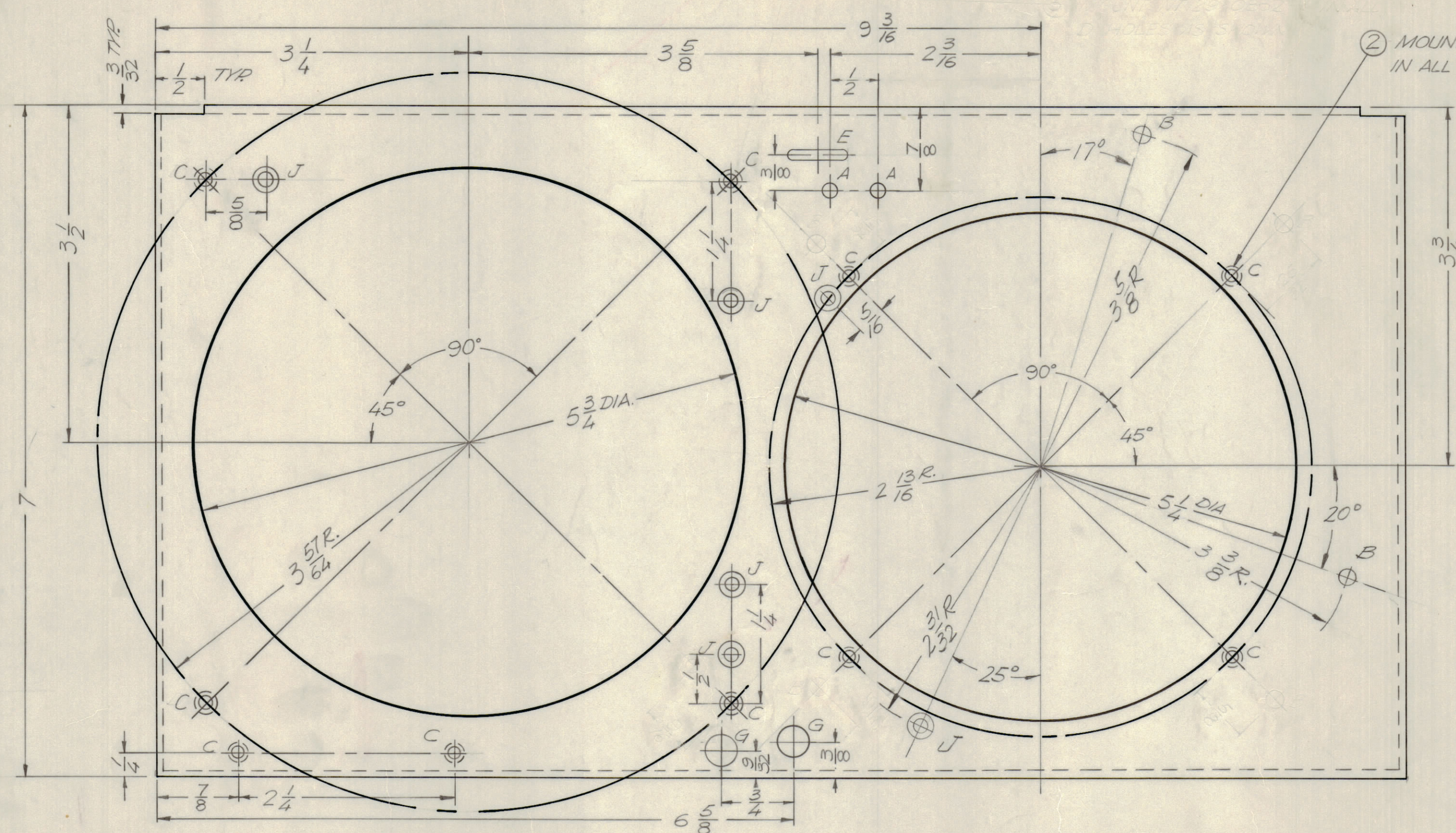


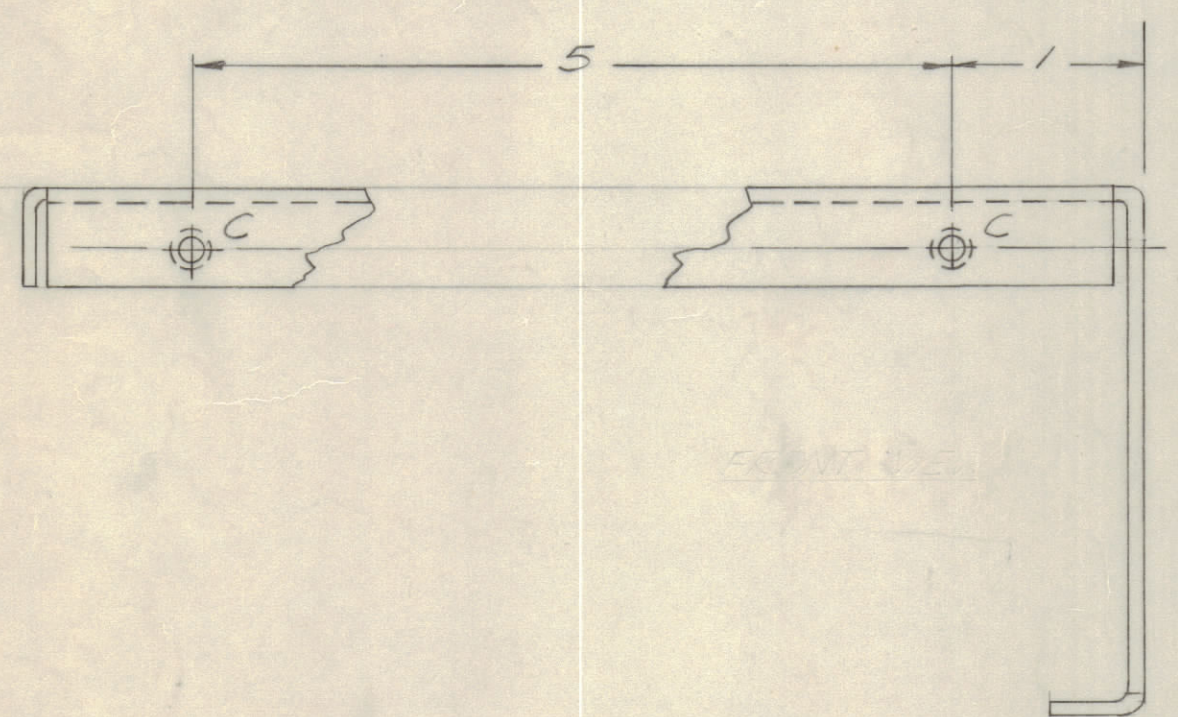
BACK VIEW



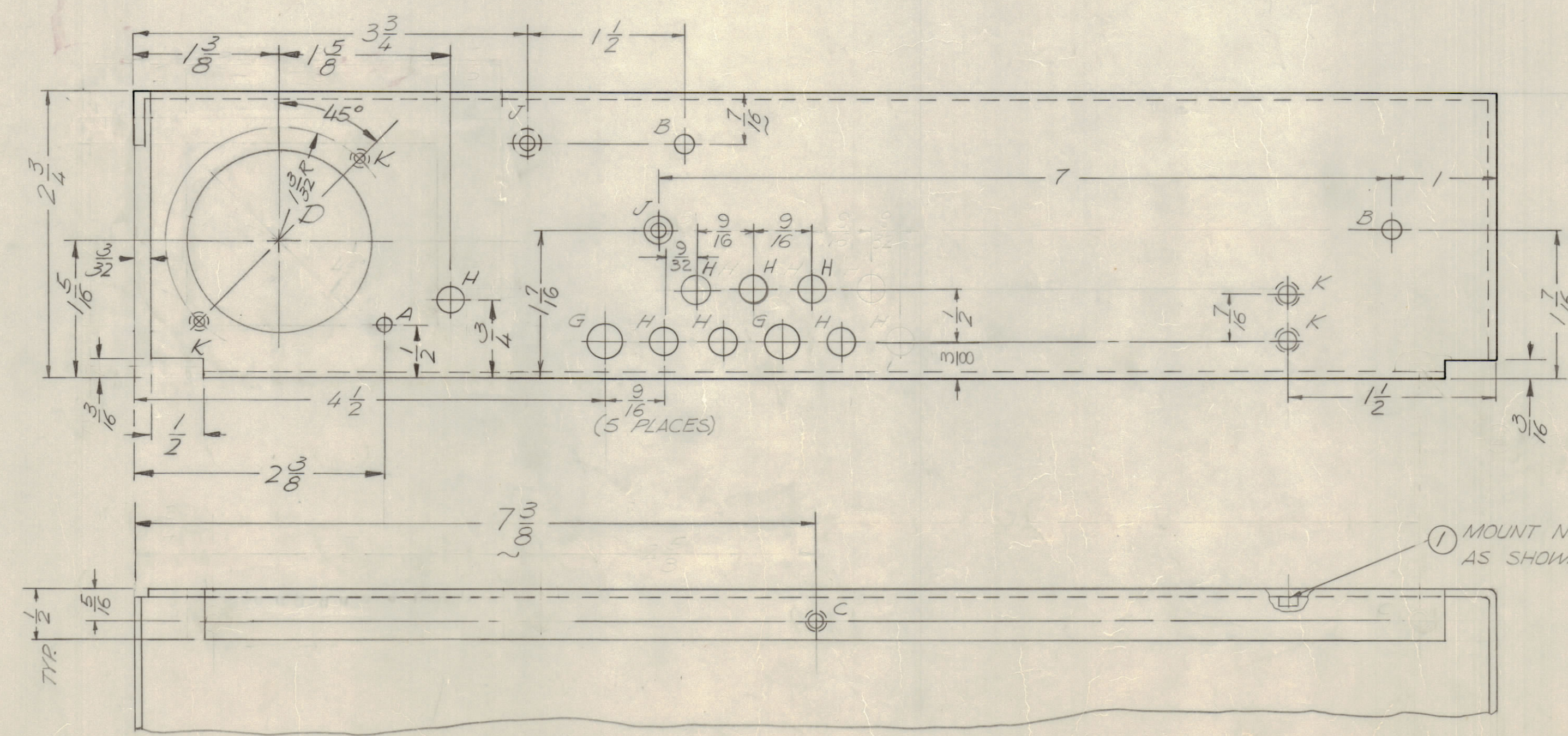
TOP VIEW



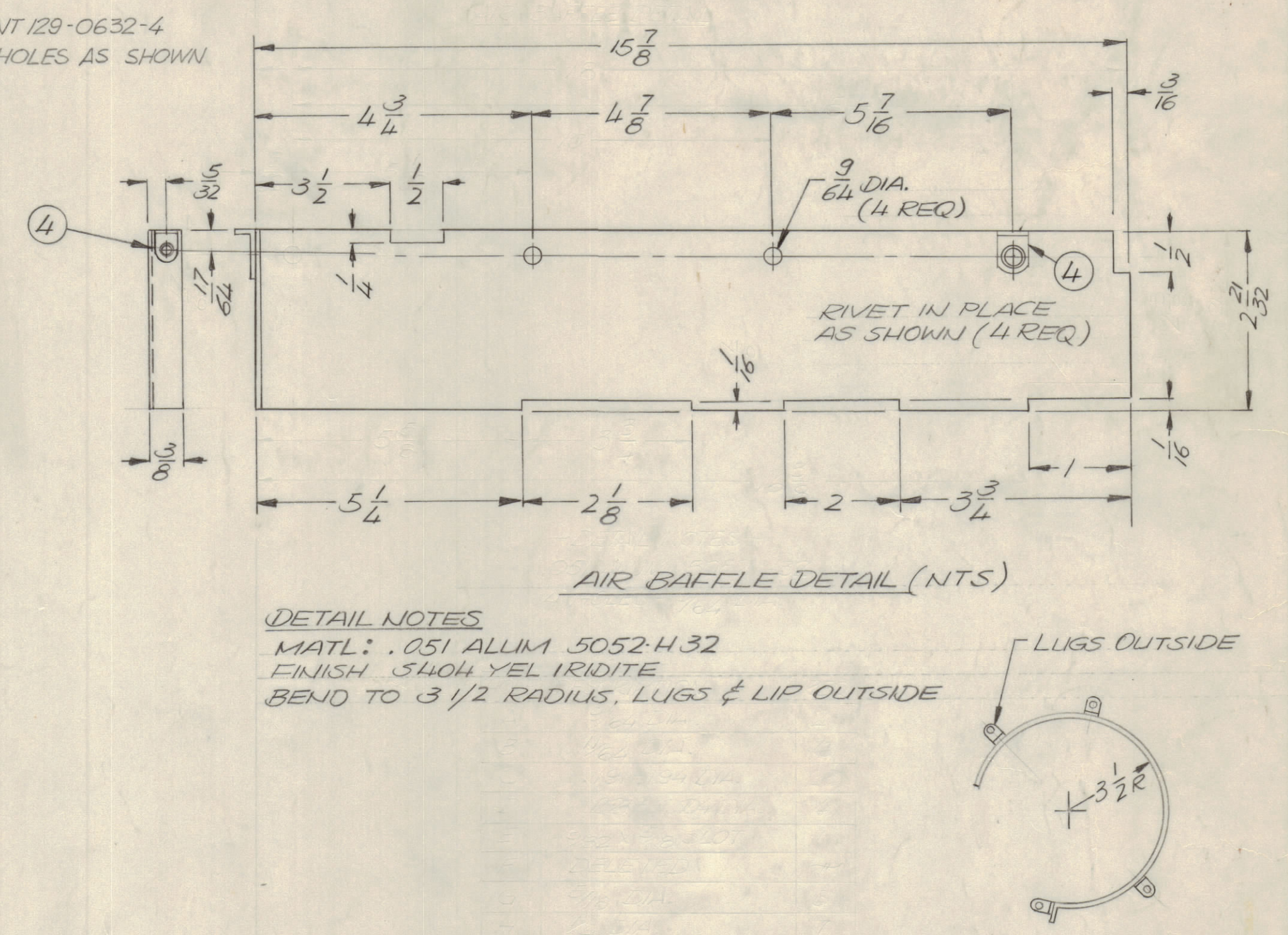
HOLE DESCRIPTION	QTY.
A — 3/64 DIA.	3
B — 11/64 DIA.	4
C — .191-.194 DIA.	20
D — 1 3/4 DIA.	1
E — 3/32 x 5/8 SLOT	1
F — DELETED	
G — 5/16 DIA.	4
H — 1/4 DIA.	7
I — .0632 C'SNK	8
K — .161-.164 DIA.	4



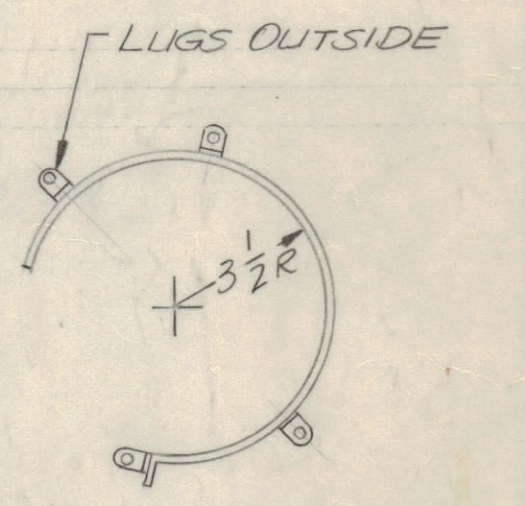
BOTTOM VIEW



~NOTE~
 ALL NUTS & RIVETS MOUNTED
 AFTER FINISHING



DETAIL NOTES
 MATL: .051 ALUM 5052-H32
 FINISH S404 YEL IRIDITE
 BEND TO 3 1/2 RADIUS, LUGS & LIP OUTSIDE



E.M.N.NO	DRAFT	CHKD	ZONE	LTR	REVISIONS		
					DESCRIPTION	DATE	APPROVED
GE				X	EXP RELEASE	10-14-68	
GE					ORIGINAL RELEASE FOR PRODUCTION	1-14-70	
15861	KL	WJ	A		IT. 2 QTY WAS 16, DELE IT 3, CALL OUT NOTE	5/22/70	
15851	GE		B		CHG. DIM. FRM. 6 1/2 TO 7 3/8	5/19/70	
20248	GE		C		REVISED	3/4/71	
20584	GE	WJ	D		REVISED AIR BAFFLE DETAIL	4/11/72	
20649	GE	WJ	E		FRONT VIEW ADD 3/16 DIM. (2) PLACES	8/22/72	

REF: LD 2403

QTY. REQ.	ITEM	PART NO.	DESCRIPTION	SYMBOL
4	4	TE167	BRACKET, ANGLE	
3			DELETED	
20	2	NT129-0632-4	NUT PLN SPLINE	C
4	1	NT129-0440-4	NUT PLN SPLINE	K

F. BUDETTI LIST OF MATERIAL

FINAL APPROVAL SDB	DATE 1-12-70	THE TECHNICAL MATERIEL CORP. MAMARONECK, NEW YORK RF CHASSIS, DRIVER
MECH. DES. ALF WJ	DATE 1-12-70	
ELECT. DES. RT	DATE 1-8-70	
CHECKED	DATE	
DRAWN G. EVANGELIST	DATE 10/14/69	

QTY / UNIT	MODEL USED ON	ASS'Y NO.
1	PALA-10K	EMAS93
APPLICATION		
CODE		

UNLESS OTHERWISE SPECIFIED DIMENSIONS ARE IN INCHES AND INCLUDE CHEMICALLY APPLIED OR PLATED FINISHES

TOLERANCES ON
 DECIMALS FRACTIONS
 .X ± .05 ± 1/64
 .XX ± .01 ANGLES
 .XXX ± .005 ± 0° - 30°

MATERIAL .064 ALUM 5052-H32
 FINISH S404 YEL. IRIDITE

SIZE	CODE IDENT NO.	DWG NO.	ISSUE
D	82679	MS 5557	E
SCALE	1:1		SHEET OF