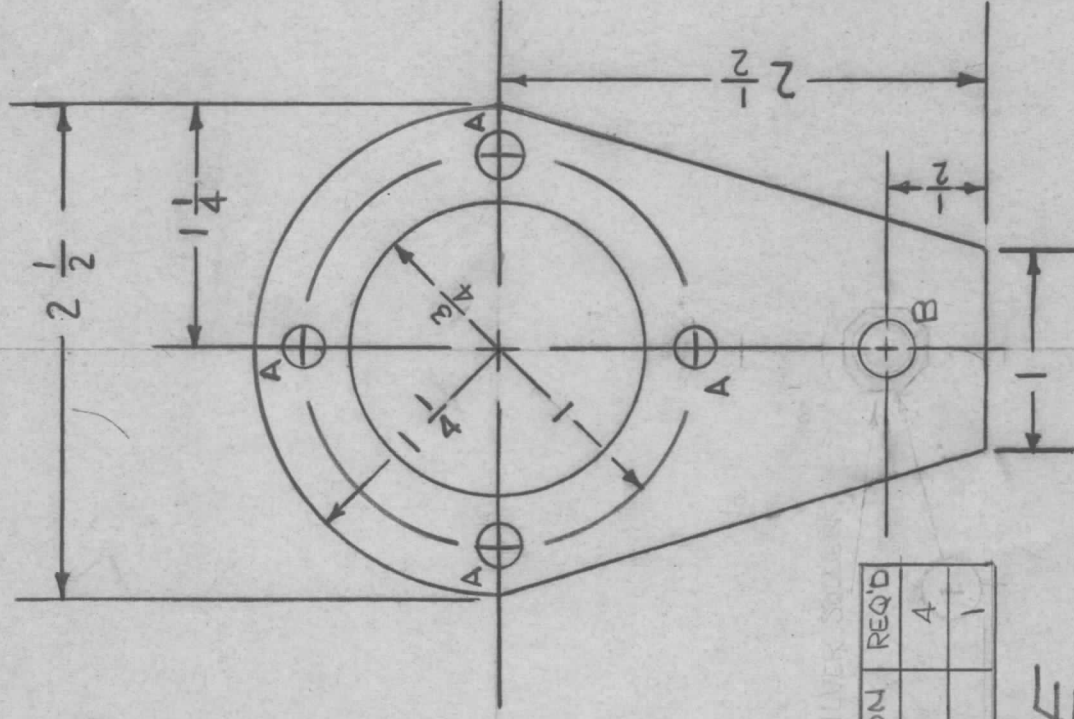


APPLICATION

QTY	MODEL USED ON	ASS'Y NO.	LTR
1	PALA-10K	AX5084	X ₁

REVISIONS

DESCRIPTION	DATE	E.M.N.NO	DRAFT	CHKD	APPD
CHG'D SWAG NUT TO HEX. NUT	5/13/69		RE		
DELE. HEX. NUT, ADD B" HOLE	5/14/69		RE		
ORIGINAL RELEASE FOR PRODUCTION	1/14/70		W		
ADD. OBSOLETE NOTE	4-6-72	20580	GE	EL	EL



HOLE	DESCRIPTION	REQ'D
A	13/64 DIA.	4
B	9/32 DIA.	1

OBSOLETE

USE FOR PALA-10K & HFLA-10K WITH 8794 FINAL AMP SPARE PARTS ONLY

UNLESS OTHERWISE SPECIFIED DIMENSIONS ARE IN INCHES AND INCLUDE CHEMICALLY APPLIED OR PLATED FINISHES

DECIMALS
X ± .05
XX ± .01
.XXX ± .005

FRACTIONS
1/64
ANGLES
0°-30°

MATERIAL
ALUMINUM 1/8 THICK
FINISH S404
VEL. IRIDITE

REQ'D ITEM	PART NUMBER	DESCRIPTION	SYM.
------------	-------------	-------------	------

F. BUDETTI

FINAL APPROVAL	DATE
<i>[Signature]</i>	1-8-70
MECH. DES.	DATE
ALP. <i>[Signature]</i>	1-8-70
ELECT. DES.	DATE
<i>[Signature]</i>	
CHECKED	DATE
<i>[Signature]</i>	
DRAWN	DATE
DA	

LIST OF MATERIAL

THE TECHNICAL MATERIEL CORP.
MAMARONECK, NEW YORK

PLATE, FIL

NOTICE TO PERSONS RECEIVING THIS DRAWING
THE TECHNICAL MATERIEL CORPORATION claims proprietary right in the material disclosed hereon. This drawing is issued in confidence for engineering information only and may not be reproduced or used to manufacture anything shown hereon without permission from THE TECHNICAL MATERIEL CORPORATION to the user. This drawing is loaned for mutual assistance and is subject to recall at any time.

SIZE	CODE IDENT. NO.	DWG NO.	ISSUE
A	82679	MS5539	A
SCALE		SHEET	OF