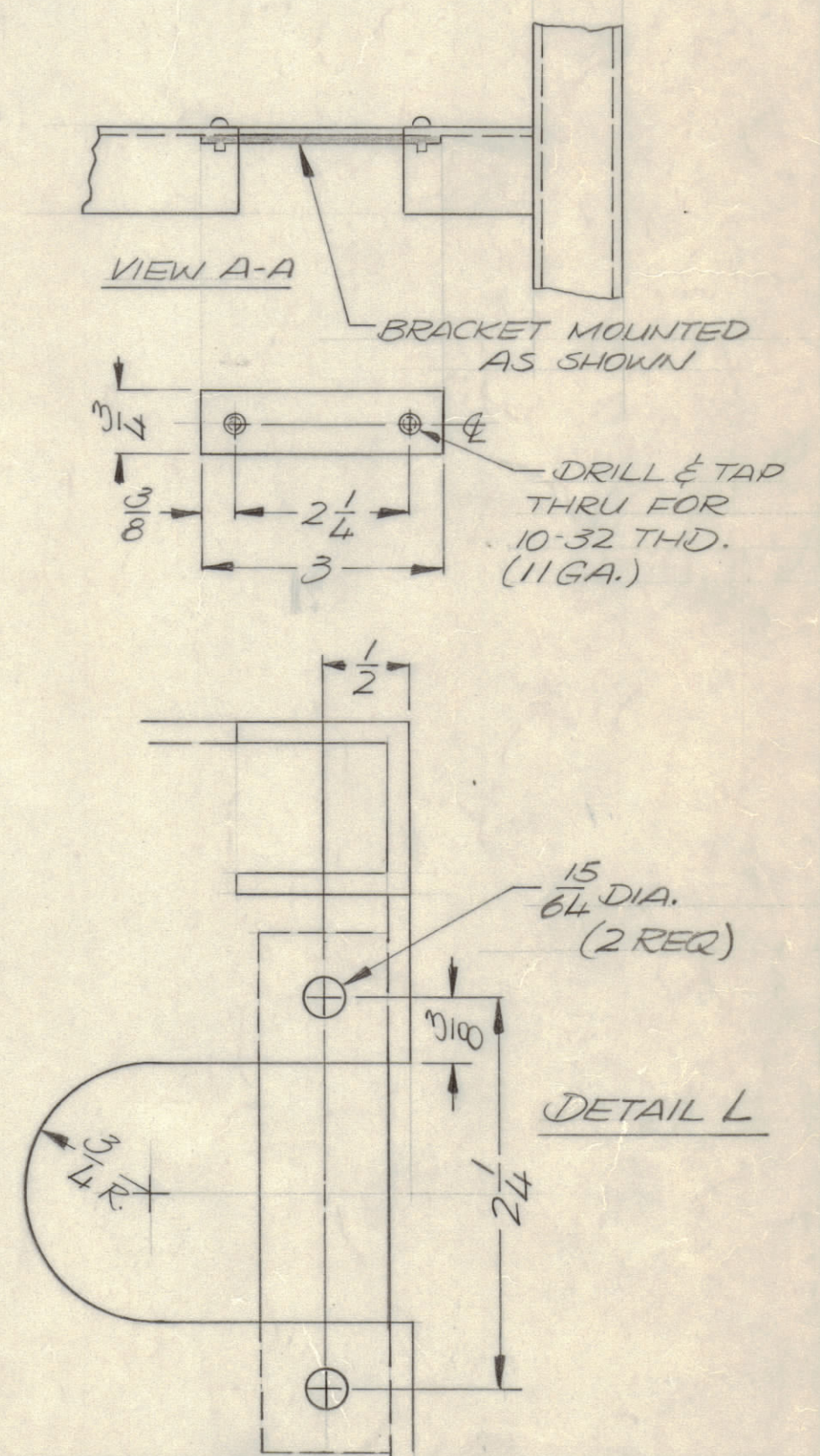
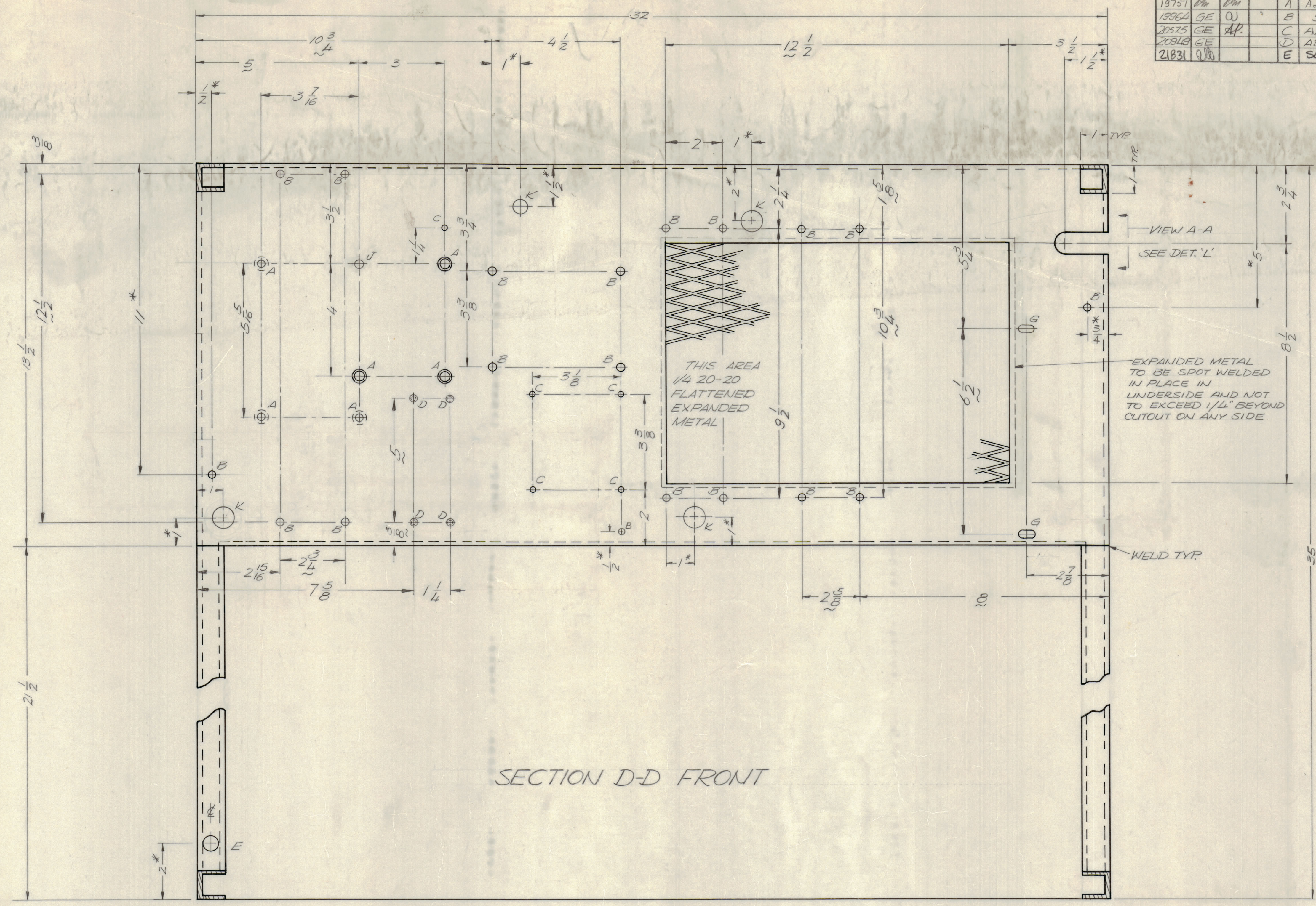


REVISIONS							
E.M.N.O.	DRAFT	CHKD	ZONE	LTR	DESCRIPTION	DATE	APPROVED
19751	EM	EM		A	ADD SH. 6	9 Feb 70	EM
19964	GE	OU		B	SEE SHEETS 1, 3, 4, 5	8-14-70	OU
20575	GE	AP		C	ADD DETAILS FROM SHEET 2	4-13-72	AP
20848	GE			D	ADD. ASTERISKS NOTE, SEE EMN	11-13-72	AP
21831	QU			E	SEE SHEET 3	11-10-87	



HOLE	DESCRIPTION	QTY
A	1/4 20 WELD NUT	7
B	15/64 DIA.	15
C	11/64 DIA.	5
D	TAP THRU FOR 0632	4
E	1/2 DIA.	1
F	DELETED	
G	1/4 X 1/2 SLOT	2
H	DELETED	
J	9/32 DIA.	1
K	3/16 DIA.	4
L	SEE 'L' DETAIL	1

NOTE 1. 1/4 20-20 FLATTENED EXPANDED METAL TO BE MOUNTED ON BOTTOM SURFACE AND TO EXTEND 1/4 INCH BEYOND EDGE.

2. WELD NUTS (HOLE A) TO BE MOUNTED AS SHOWN

3. DIMENSIONS WITH ASTERISKS ARE NON CRITICAL. TOLERANCE ± 1/16

HFL (-) 10K REVA AX 5163		PALA 10 K AX 5085	
QTY / UNIT	MODEL USED ON	ASSY NO.	
APPLICATION			
CODE			

UNLESS OTHERWISE SPECIFIED DIMENSIONS ARE IN INCHES AND INCLUDE CHEMICALLY APPLIED OR PLATED FINISHES

TOLERANCES ON
 DECIMALS X ± .05
 XX ± .01
 XXX ± .005

FRACTIONS ± 1/64
 ANGLES ± 0°-30'

MATERIAL 13 GA CRS EXCEPT AS NOTED
 FINISH COPPER FLASH & CLEAR IRIDITE

QTY. REQ.	ITEM	PART NO.	DESCRIPTION	SYMBOL
E BUDETTI LIST OF MATERIAL				
FINAL APPROVAL		DATE	THE TECHNICAL MATERIEL CORP.	
MECH. DES.		DATE	MAMARONECK, NEW YORK	
ELECT. DES.		DATE	FRAME 10K, BLOWER DECK	
CHECKED		DATE	SIZE CODE IDENT NO. DWG NO.	
DRAWN		DATE	D 82679 MS 5530	
MATERIAL		FINISH	ISSUE	
SCALE 1/2		SHEET 6 OF 7		E