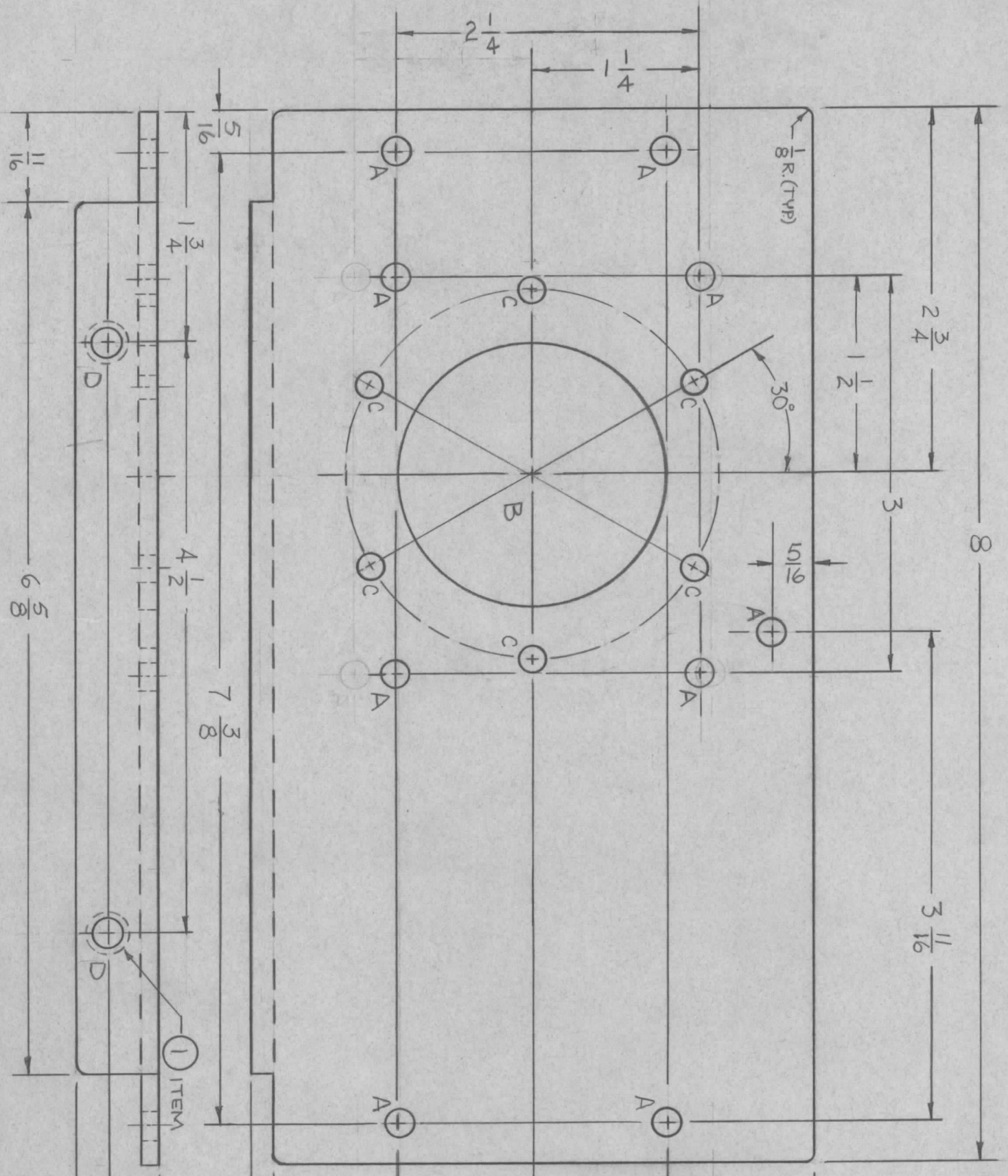


REVISIONS						
ZONE	LTR	DESCRIPTION	DATE	E.M.N.NO	DRAFT	CHKD
	Ø	ORIGINAL RELEASE	11/1/70		(A)	
A		B & C DIAS CHG HL. CNT.	3/9/70	19783	GE	F34



HOLE	DESCRIPTION	REQ'D
A	13/64 DIA.	9
B	2 1/16 DIA.	1
C	13/64 DIA. ON 13/8 R. Ø AT 60° APART	6
D	.221 - .224 DIA.	2

REQ'D ITEM	PART NUMBER	DESCRIPTION	SYM.
2	NT-129-832-6	NUT, ROUND, SWAGE TYPE	D

LIST OF MATERIAL			
FINAL APPROVAL	DATE	THE TECHNICAL MATERIEL CORP.	
MECH. DES.	DATE	MAMARONECK, NEW YORK	
ELECT. DES.	DATE	PLATE, MTG, CAP.	
CHECKED	DATE	LOAD	
DRAWN	DATE	SIZE	CODE IDENT. NO.
ALP	10-10-69	B	82679
		DWG. NO.	MS 5527
		SCALE	SHEET
			OF
			ISSUE
			A

QTY / UNIT	MODEL USED ON	ASS'Y NO.
1	PALD-10K	BMA 380
APPLICATION CODE		

NOTICE TO PERSONS RECEIVING THIS DRAWING
 THE TECHNICAL MATERIEL CORPORATION claims proprietary right in the material disclosed hereon. This drawing is issued in confidence for engineering information only and may not be reproduced or used to manufacture anything shown hereon without permission from THE TECHNICAL MATERIEL CORPORATION to the user. This drawing is loaned for mutual assistance and is subject to recall at any time.