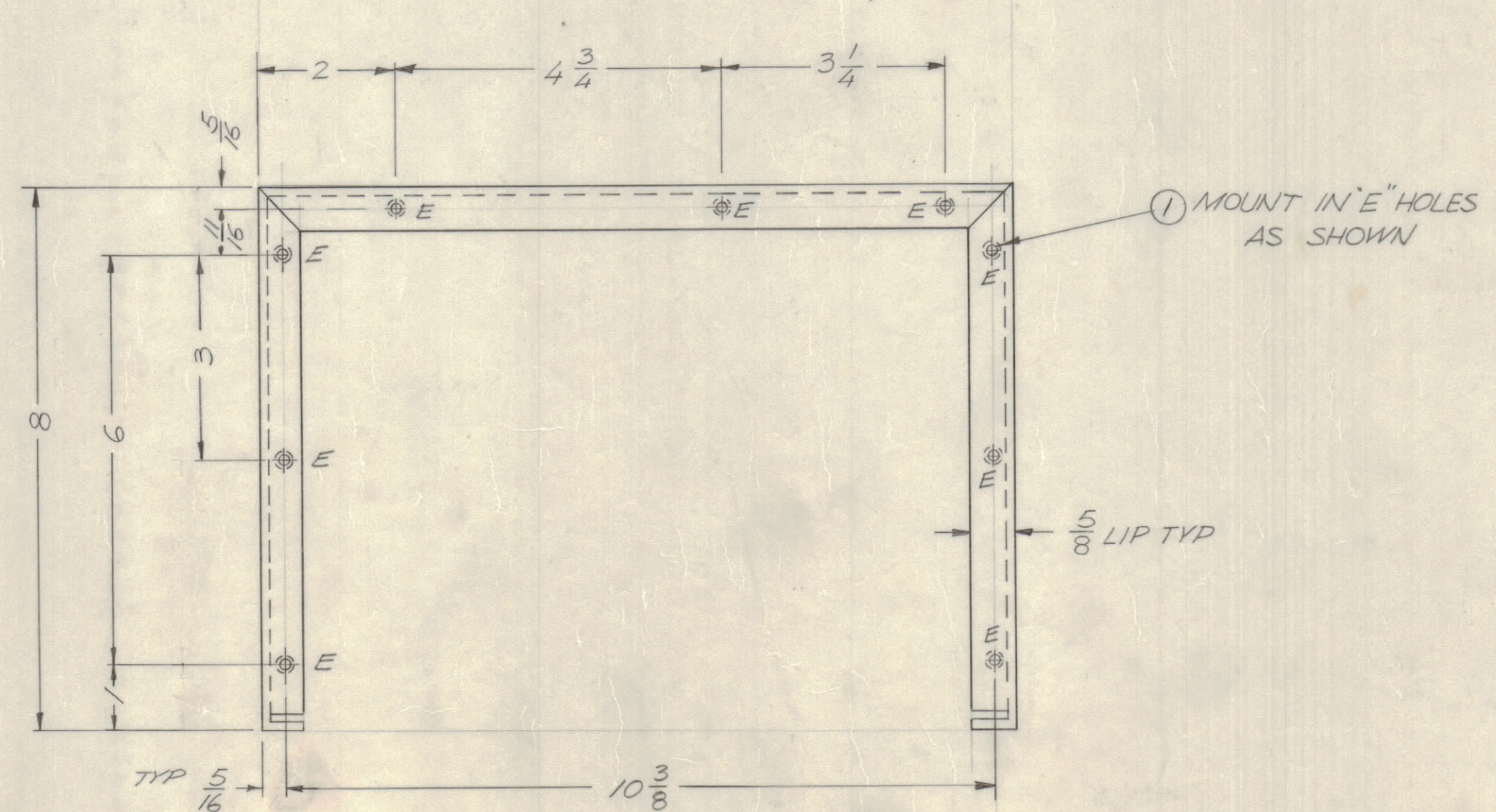
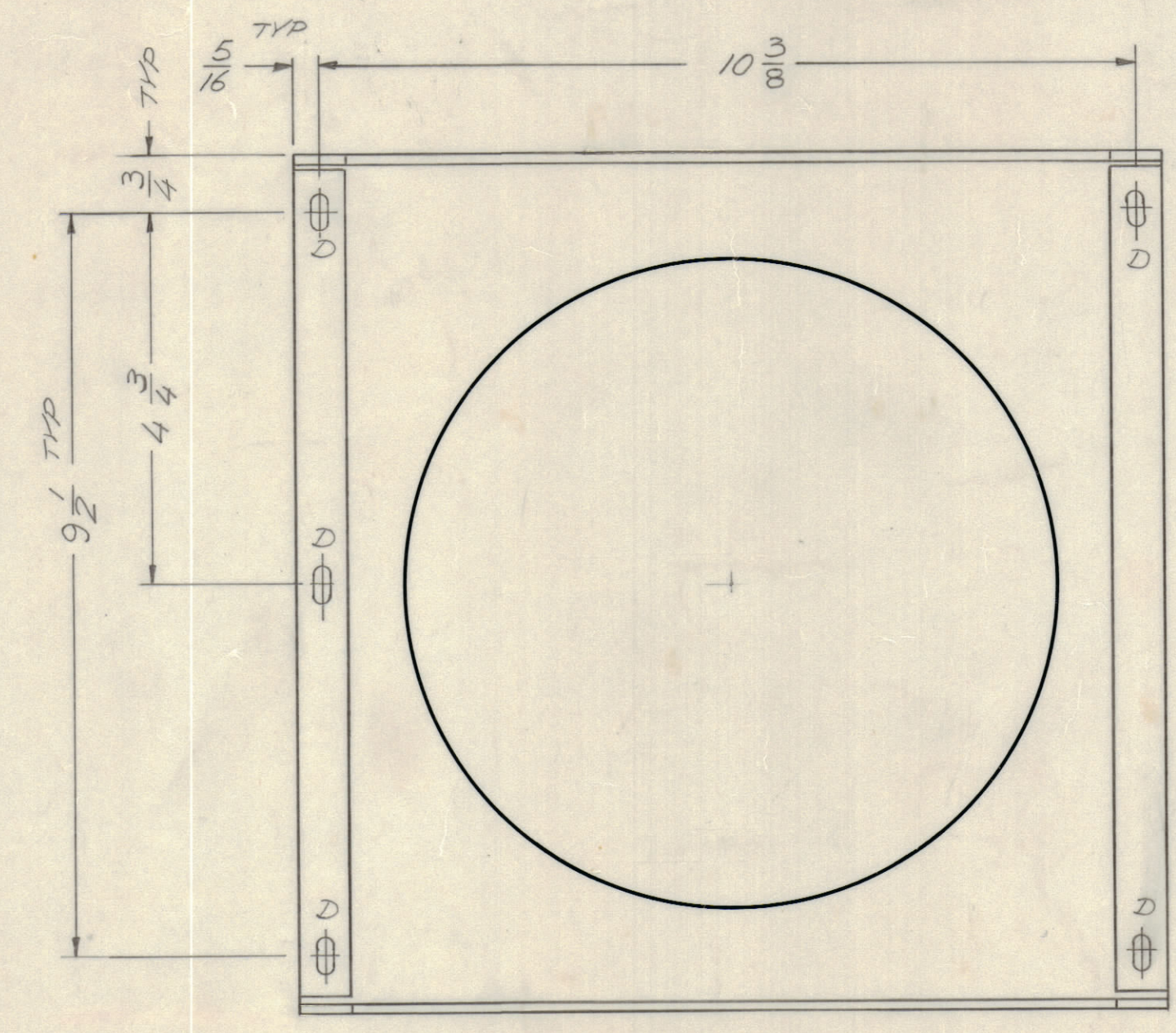
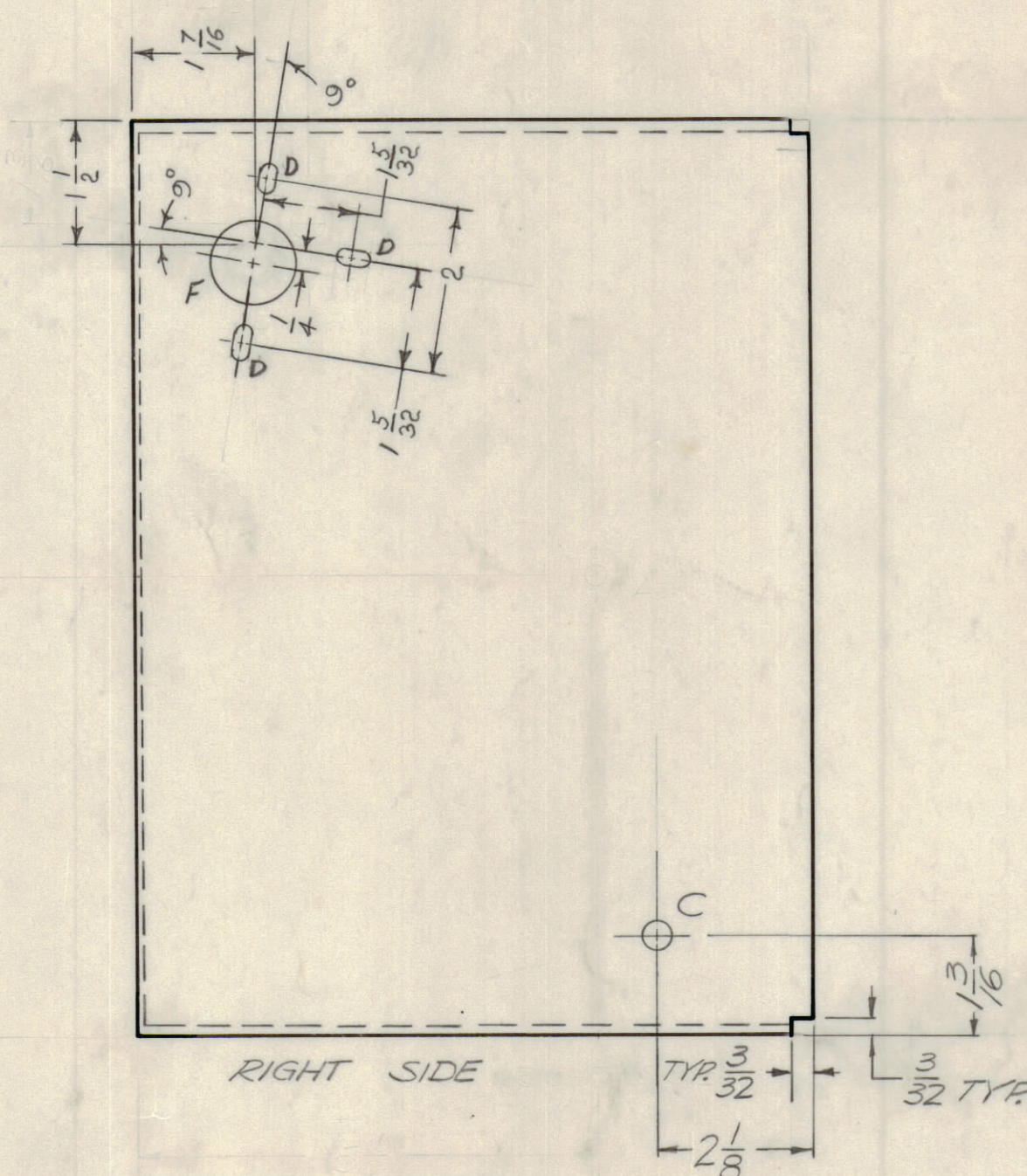
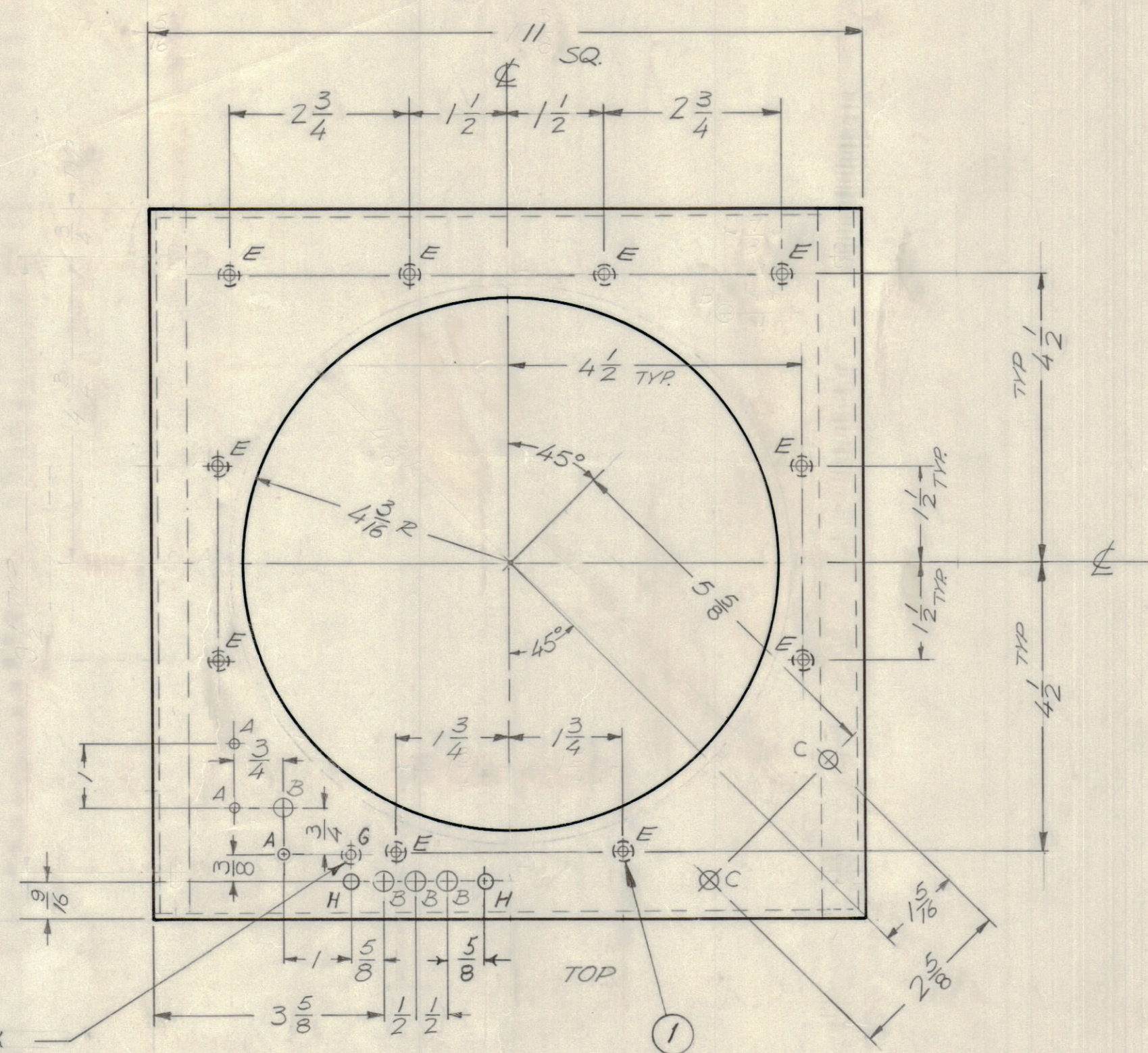
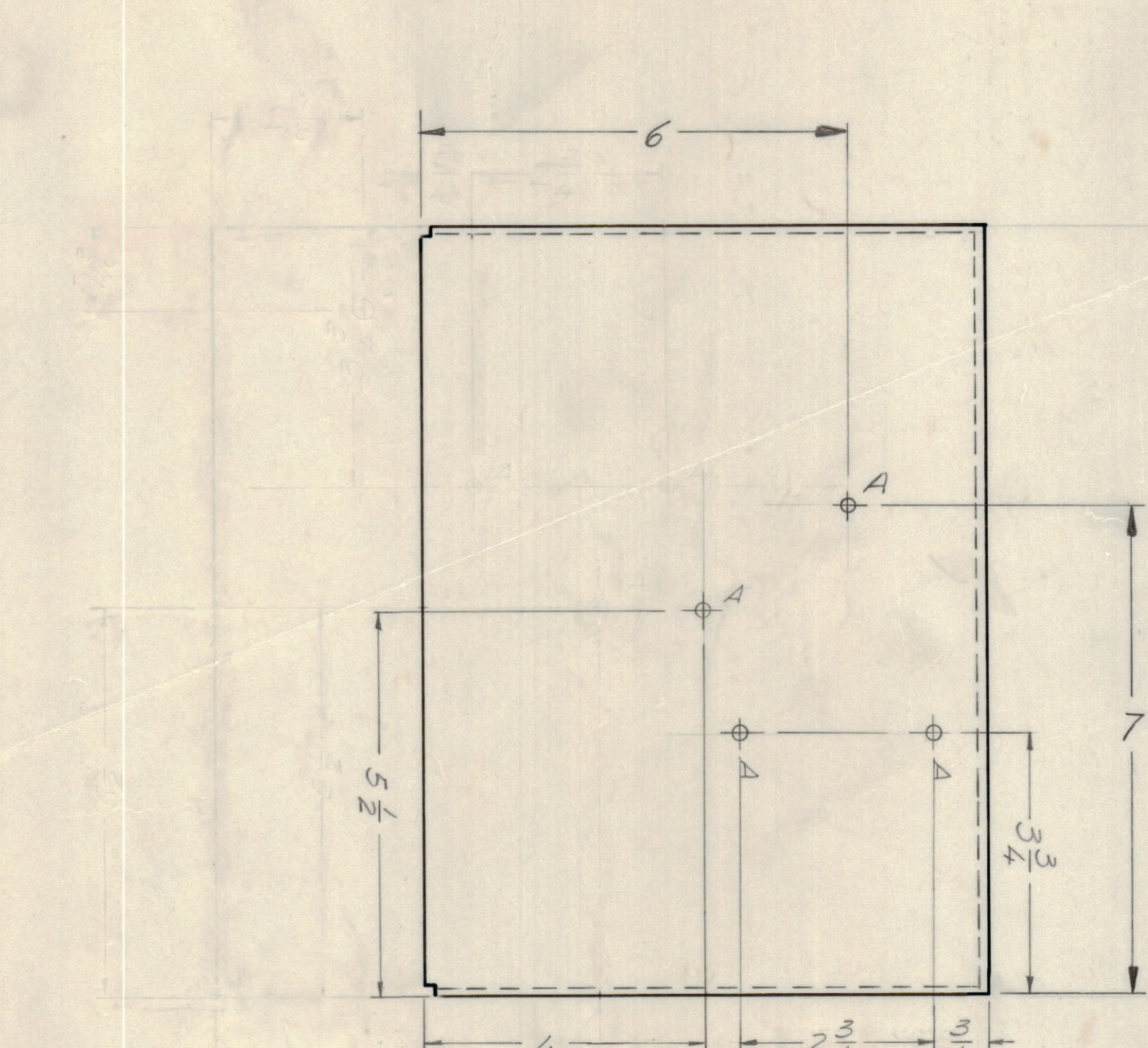


REVISIONS							
E.M.N.NO	DRAFT	CHKD	ZONE	LTR	DESCRIPTION	DATE	APPROVED
	GE			X	4 ¹ / ₂ R CHG TO 4 ³ / ₁₆	11-25-69	
	GE			D	ORIGINAL RELEASE FOR PRODUCTION	1-14-70	
20199	RF	WPC		A	ADDED F,G,H, DELE. I 'A' HOLE	1-14-70	SPC J.
20547	GE			B	CHG 10 'A' HOLES TO 'E' HOLES	3-17-72	SP



HOLE	DESCRIPTION	QTY
A	1/64 DIA	7
B	1/4 DIA	4
C	5/16 DIA	3
D	13/64 X 13/32	8
E	.191 TO .194	28
F	1 1/8 DIA	1
G	.144 DIA & C'SINK .284 DIA X .020	1
H	9/64 DIA.	2

28	1	NT/129-0632-4	NUT PLN SPLINE	E
QTY. REQ.	ITEM	PART NO.	DESCRIPTION	SYMBOL

F. BUDETTI LIST OF MATERIAL

FINAL APPROVAL	DATE	THE TECHNICAL MATERIEL CORP. MAMARONECK, NEW YORK CHASSIS SOCKET, MAIN
MECH. DES.	DATE	
ELECT. DES.	DATE	
CHECKED	DATE	
DRAWN	DATE	

REF: LD2381
 UNLESS OTHERWISE SPECIFIED DIMENSIONS ARE IN INCHES AND INCLUDE CHEMICALLY APPLIED OR PLATED FINISHES
 TOLERANCES ON
 DECIMALS X ± .05
 FRACTIONS ± 1/64
 ANGLES ± 0°-30°
 MATERIAL ALUM .081
 FINISH S404 YEL. IRIDITE

QTY / UNIT	MODEL USED ON	ASS'Y NO.
1	HFLA-10K	AX5114
1	PALA-10K	AX5084
APPLICATION		
CODE		

NOTICE TO PERSONS RECEIVING THIS DRAWING
 THE TECHNICAL MATERIEL CORPORATION claims proprietary right in the material disclosed hereon. This drawing is issued in confidence for engineering information only and may not be reproduced or used to manufacture anything shown hereon without permission from THE TECHNICAL MATERIEL CORPORATION to the user. This drawing is loaned for mutual assistance and is subject to recall at any time.

SIZE	CODE	IDENT NO.	DWG NO.	ISSUE
D	82679		MS 5510	B
SCALE	1:2		SHEET	OF