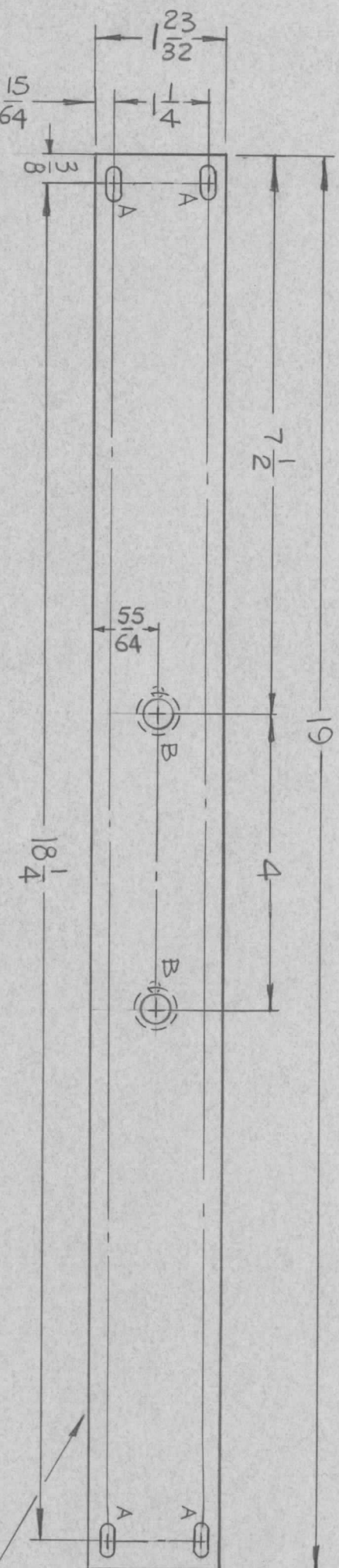


HOLES	DESCRIPTION	REQ
A	1/4 X 29/64 SLOT	4
B	SEE DETAIL	2

REVISIONS						
ZONE	LTR	DESCRIPTION	DATE	E.M.N.NO	DRAFT	CHKD
X		EXP. RELEASE	6-14-68			
Ø		ORIG. RELEASE FOR PROD.	6-25-69			

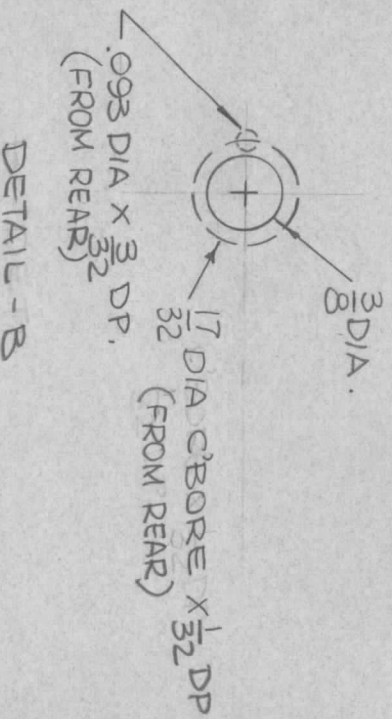


FRONT VIEW

MARK TMC PART NUMBER MS5400-1/8 HIGH GOTHIC WITH LATEST REVISION LETTER ON REAR OF PANEL

- MACHINING:**
1. MILL ALL EDGES.
  2. HOLES MUST BE DRILLED, UNLESS OTHERWISE SPECIFIED.
  3. LATERAL BOW OF PANEL MUST BE KEPT TO .031 TOLERANCE.
  4. PANEL MUST BE FREE OF ALL MACHINING MARKS, GOUGES AND SCRATCHES. IF NECESSARY, SAND FRONT OF PANEL WITH NO. 120 GRIT SANDPAPER.

- FINISH NOTES:**
1. S404 - IRIDITE 14-2 AL-COAT.
  2. S114 - ZINC CHROMATE PRIMER
  3. S115 - SMOOTH GRAY ENAMEL
- OR  
PRIME AND PAINT PER CUSTOMER'S SPECIFICATIONS.



QTY / UNIT	SYM G7-10G4	MODEL USED ON	ASS'Y NO.
1		APPLICATION	
		CODE	S401-4S1

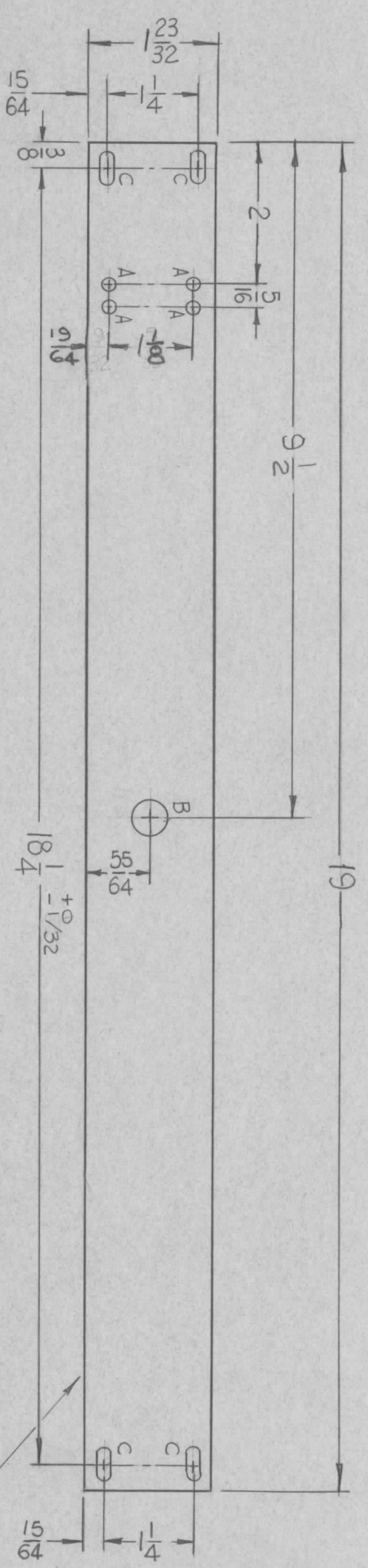
DECIMALS	FRACTIONS
X ± .05 TOLS.	1/64
.XX ± .01 ANGLES	0° 30'
.XXX ± .005	

UNLESS OTHERWISE SPECIFIED DIMENSIONS ARE IN INCHES AND INCLUDE CHEMICALLY APPLIED OR PLATED FINISHES
MATERIAL 3/16 THK ALUMINUM 2024-T3
FINISH SEE NOTES

REQ'D ITEM	PART NUMBER	DESCRIPTION	SYM.
E. MILLER		LIST OF MATERIAL	
FINAL APPROVAL	DATE	THE TECHNICAL MATERIEL CORP.	
MECH. DES.	DATE	MAMARONECK, NEW YORK	
ELECT. DES.	DATE		
CHECKED	DATE	PANEL, FRONT	
DRAWN	DATE		
SIZE	CODE IDENT. NO.	DWG NO.	ISSUE
B	82679	MS 5400	Ø
SCALE	1/2	SHEET	OF

**NOTICE TO PERSONS RECEIVING THIS DRAWING**  
THE TECHNICAL MATERIEL CORPORATION claims proprietary right in the material disclosed hereon. This drawing is issued in confidence for engineering information only and may not be reproduced or used to manufacture anything shown hereon without permission from THE TECHNICAL MATERIEL CORPORATION to the user. This drawing is loaned for mutual assistance and is subject to recall at any time.

REVISIONS						
ZONE	LTR	DESCRIPTION	DATE	E.M.N. NO	DRAFT	CHKD
X		EXP. RELEASE	6-11-68			
X1		1/4" HOLES RELOCATED	1/27/69	X1		
Ø		ORIG. RELEASE FOR PROD	2-13-69	Ø	RG	



HOLES	DESCRIPTION	REQ.
A	11/64 DIA.	4
B	15/32 DIA.	1
C	1/4 X 29/64 SLOT	4

FRONT VIEW

MARK TMC PART NUMBER  
1/8 HIGH GOTHIC WITH LATEST  
REVISION LETTER ON REAR OF PANEL

- MACHINING:**
1. MILL ALL EDGES.
  2. HOLES MUST BE DRILLED, UNLESS OTHERWISE SPECIFIED.
  3. LATERAL BOW OF PANEL MUST BE KEPT TO .031 TOLERANCE.
  4. PANEL MUST BE FREE OF ALL MACHINING MARKS, GOUGES AND SCRATCHES. IF NECESSARY, SAND FRONT OF PANEL WITH NO. 120 GRIT SANDPAPER.

- FINISH NOTES:**
1. S404 - IRIDITE 14-2 AL-COAT
  2. S114 - ZINC CHROMATE PRIMER
  3. S115 - SMOOTH GRAY ENAMEL
- OR  
PRIME AND PAINT PER CUSTOMER'S SPECIFICATIONS.

REF. LD2321

REQ'D ITEM	PART NUMBER	DESCRIPTION	SYM.
	F. BUDETTI	LIST OF MATERIAL	

FINAL APPROVAL	DATE	THE TECHNICAL MATERIEL CORP.	
<i>[Signature]</i>	1-29-68	MAMARONECK, NEW YORK	
MECH. DES.	DATE	PANEL, FRONT (TEST KEY)	
<i>[Signature]</i>	1-9-68		
ELECT. DES.	DATE		
<i>[Signature]</i>	5-11-68		
CHECKED	DATE	SIZE	CODE IDENT. NO.
<i>[Signature]</i>	1-9-68	B	82679
DRAWN	DATE	DWG NO.	ISSUE
<i>[Signature]</i>	5-11-68	M55401	Ø

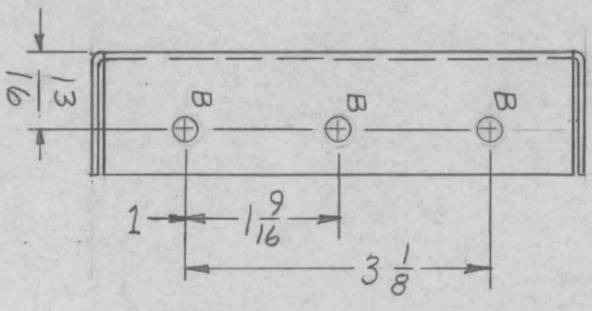
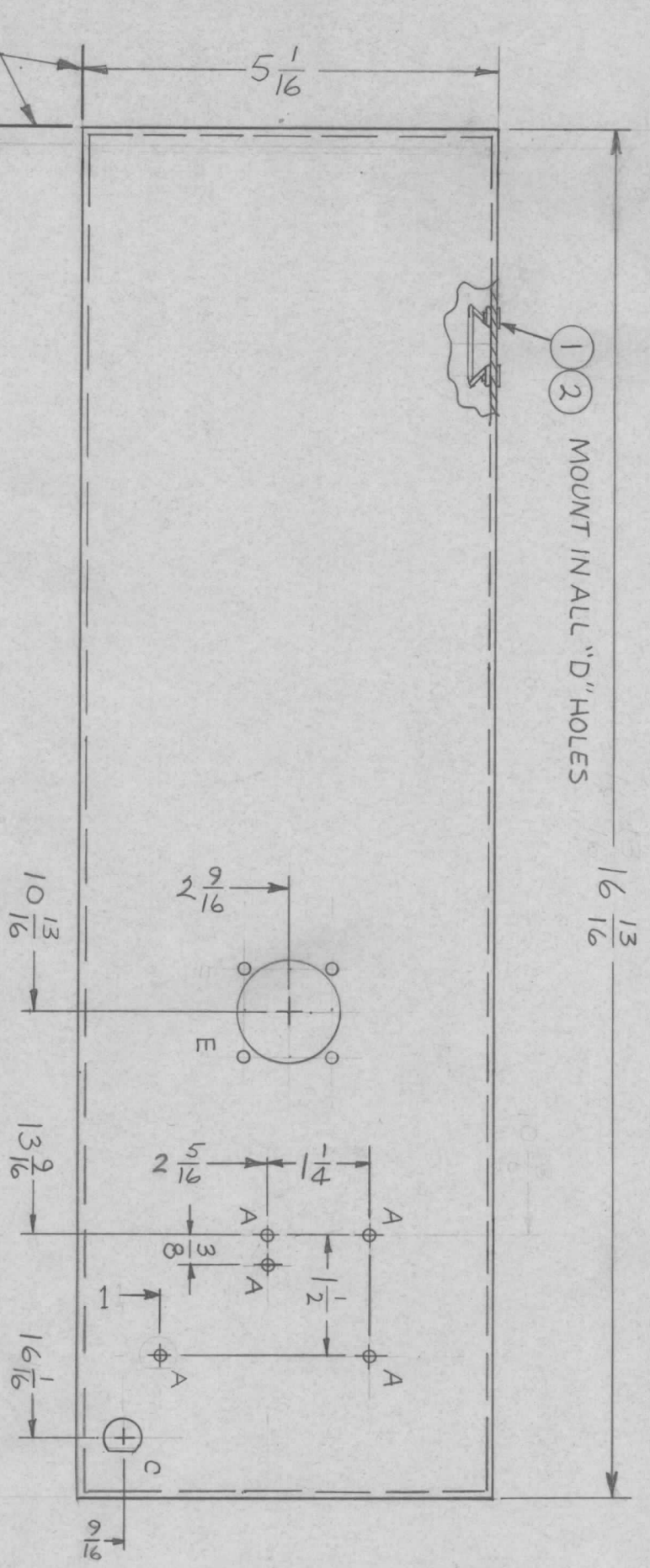
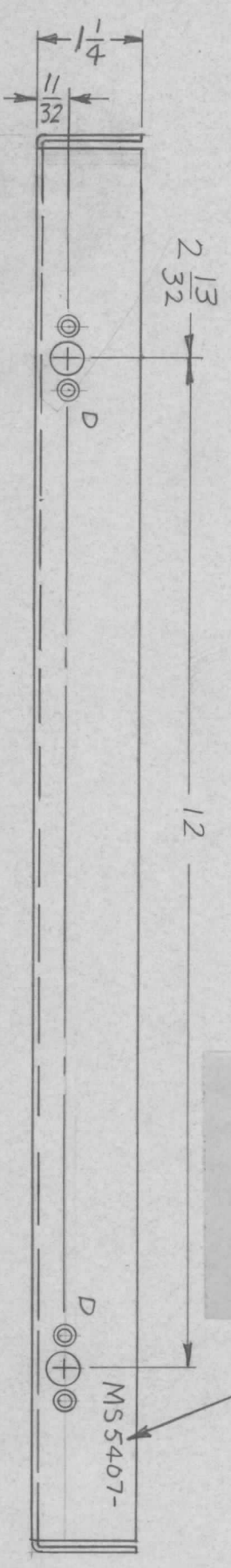
SCALE 1/2 SHEET OF

QTY / UNIT	MODEL USED ON	ASSY NO.
1	GPTM-10KJA	
APPLICATION		
CODE	S401-451	
A		

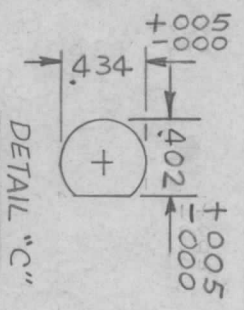
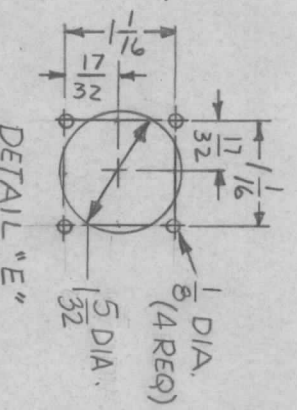
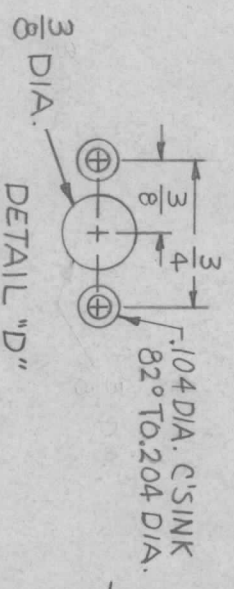
**NOTICE TO PERSONS RECEIVING THIS DRAWING**  
THE TECHNICAL MATERIEL CORPORATION claims proprietary right in the material disclosed hereon. This drawing is issued in confidence for engineering information only and may not be reproduced or used to manufacture anything shown hereon without permission from THE TECHNICAL MATERIEL CORPORATION to the user. This drawing is loaned for mutual assistance and is subject to recall at any time.

REVISIONS						
ZONE	LTR	DESCRIPTION	DATE	E.M.N. NO	DRAFT	CHKD
X		EXP. RELEASE	6/27/68		MS.	
Ø		ORIGINAL RELEASE	8/7/69	Ø	(O)	

MARK TMC PART NUMBER  
1/8 HIGH GOTHIC WITH LATEST  
REVISION LETTER



HOLE	DESCRIPTION	REQ
A	1/8 DIA	5
B	13/64 DIA	6
C	SEE DETAIL	1
D	SEE DETAIL	2
E	SEE DETAIL	1



REQ'D ITEM	PART NUMBER	DESCRIPTION	SYM.
2	FS 102-2	FASTENERS	D
4	RI 100-094-32	BLIND RIVETS	D

THE TECHNICAL MATERIEL CORP.  
MAMARONECK, NEW YORK

PANEL, REAR

QTY / UNIT	1	MODEL USED ON	SBS-11	ASS'Y NO.	
APPLICATION		CODE	S401-451		

NOTICE TO PERSONS RECEIVING THIS DRAWING  
THE TECHNICAL MATERIEL CORPORATION claims proprietary right in the material and may not be reproduced or used to manufacture anything shown hereon without permission from THE TECHNICAL MATERIEL CORPORATION to the user. This drawing is loaned for mutual assistance and is subject to recall at any time.

UNLESS OTHERWISE SPECIFIED  
DIMENSIONS ARE IN INCHES  
AND INCLUDE CHEMICALLY APPLIED  
OR PLATED FINISHES

DECIMALS	FRACTIONS	TOLS.	ANGLES
.X ± .05	1/64		1/4°
.XX ± .01			30'
.XXX ± .005			

MATERIAL: 0.064 THICK  
ALUMINUM 5052-H32  
FINISH S404 YELLOW  
IRIDITE

DATE	8/7/69
MECH. DES.	
ELECT. DES.	
CHECKED	
DRAWN	

SIZE	CODE IDENT. NO.	DWG. NO.	ISSUE
B	82679	MS 5407	Ø
SCALE	2:1	SHEET	OF

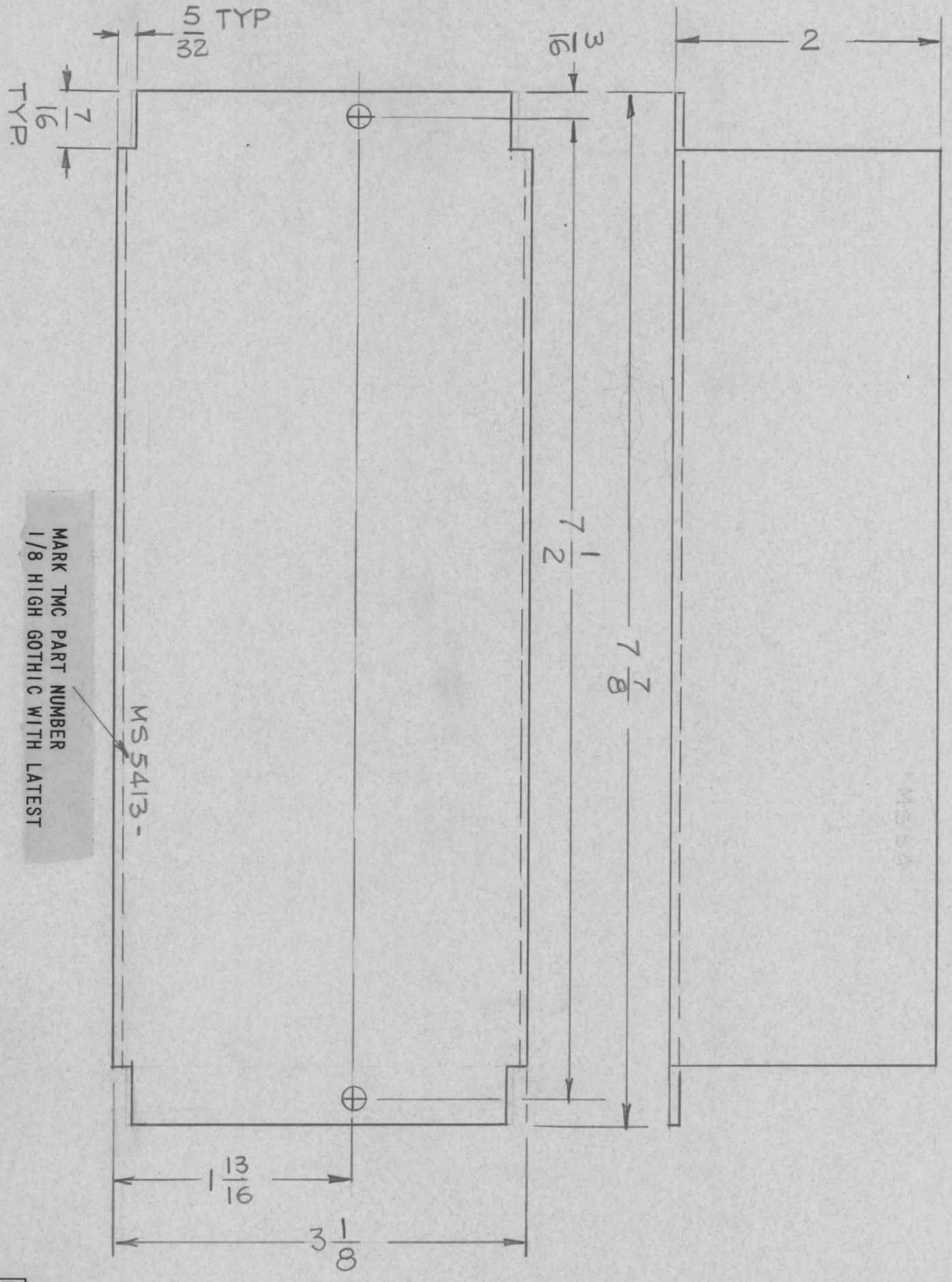
UNLESS OTHERWISE SPECIFIED:

- USE MATERIAL THICKNESS FOR MAXIMUM RADIUS ON ALL BENDS.
- ALL ANGULAR BENDS 90 DEGREES.
- REMOVE ALL BURRS AND SHARP EDGES.
- MOUNT INSERTS AFTER FINISHING.

LOCATING BASE LINES

REVISIONS						
ZONE	LTR	DESCRIPTION	DATE	E.M.N. NO	DRAFT	CHKD
X		EXP. RELEASE	9-11-68		GDL	
Ø		ORIG. RELEASE FOR PROD	9-16-68		R.G.	

HOLE	DESCRIPTION	REQ
A	11/64 DIA	2



MARK TMC PART NUMBER  
1/8 HIGH GOTHIC WITH LATEST

REF: LD 2331

UNLESS OTHERWISE SPECIFIED:

1. USE MATERIAL THICKNESS FOR MAXIMUM RADIUS ON ALL BENDS.
2. ALL ANGULAR BENDS 90 DEGREES.
3. REMOVE ALL BURRS AND SHARP EDGES.

QTY / UNIT	1	MODEL USED ON	AP145	ASSY NO.	
		APPLICATION			
		CODE	A	9401-451	

NOTICE TO PERSONS RECEIVING THIS DRAWING  
THE TECHNICAL MATERIEL CORPORATION claims proprietary right in the material disclosed hereon. This drawing is issued in confidence for engineering information only and may not be reproduced or used to manufacture anything shown hereon without permission from THE TECHNICAL MATERIEL CORPORATION to the user. This drawing is loaned for mutual assistance and is subject to recall at any time.

DECIMALS	X ± .05	TOLS.	1/64
	.XX ± .01	ANGLES	0° - 30'
	.XXX ± .005		
MATERIAL	.064 THK ALUMINUM 5052-H32		
FINISH	S404YEL. IBIDEOTE		

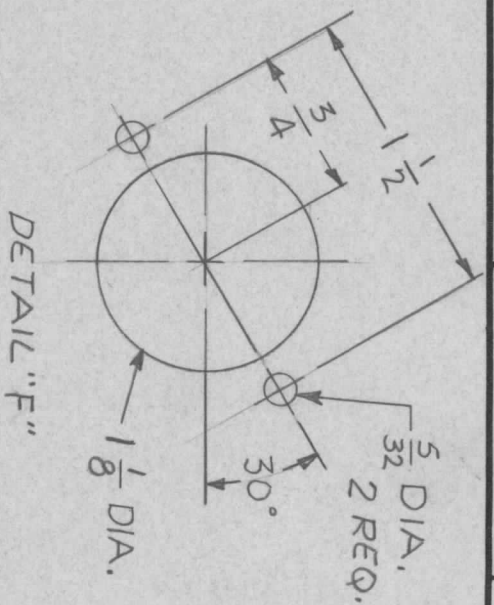
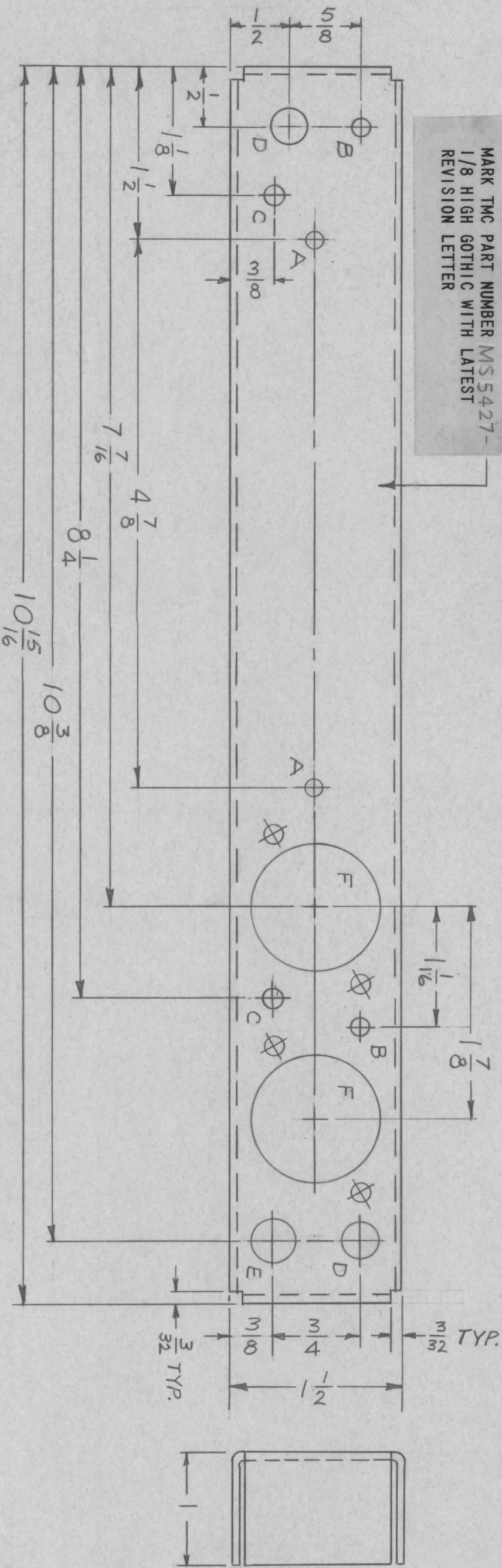
FINAL APPROVAL	DATE
MECH. DES.	DATE
ELECT. DES.	DATE
CHECKED	DATE
DRAWN	DATE

REQ'D	ITEM	PART NUMBER	DESCRIPTION	SYM.
			LIST OF MATERIAL SK 3291-1	
<p>THE TECHNICAL MATERIEL CORP. MAMARONECK, NEW YORK</p> <p>COVER, POWER SUPPLY</p>				
SIZE	CODE IDENT. NO.	DWG NO.	ISSUE	
B	82679	MS 5413	Ø	

SCALE	1:1	SHEET	OF
-------	-----	-------	----

HOLE	DESCRIPTION	REQ
A	9/64 DIA.	2
B	5/32 DIA.	2
C	11/64 DIA.	2
D	5/16 DIA.	2
E	3/8 DIA.	1
F	SEE DETAIL	2

MARK TMC PART NUMBER MS 5427-  
1/8 HIGH GOTHIC WITH LATEST  
REVISION LETTER



REVISIONS							
ZONE	LTR	DESCRIPTION	DATE	E.M.N. NO	DRAFT	CHKD	APPD
X		EXP. RELEASE	9-25-68		MS		
Ø		ORIG. RELEASE FOR PROD.	12-10-68				MS

UNLESS OTHERWISE SPECIFIED:

- USE MATERIAL THICKNESS FOR MAXIMUM RADIUS ON ALL BENDS.
- ALL ANGULAR BENDS 90 DEGREES.
- REMOVE ALL BURRS AND SHARP EDGES.

QTY / UNIT	MODEL USED ON	ASSY NO.
1	KIT 357	
APPLICATION		
CODE	S401-451	

NOTICE TO PERSONS RECEIVING THIS DRAWING  
THE TECHNICAL MATERIEL CORPORATION claims proprietary right in the material disclosed hereon. This drawing is issued in confidence for engineering information only and may not be reproduced or used to manufacture anything shown hereon without permission from THE TECHNICAL MATERIEL CORPORATION to the user. This drawing is loaned for mutual assistance and is subject to recall at any time.

DECIMALS	FRACTIONS
X ± .05 TOLS.	1/64 ANGLES
.XX ± .01	0° .30'
.XXX ± .005	
MATERIAL .063 THICK	
ALUMINUM 5052-H32	
FINISH	
S404 YEL IRIDITE	

REF: LD2333

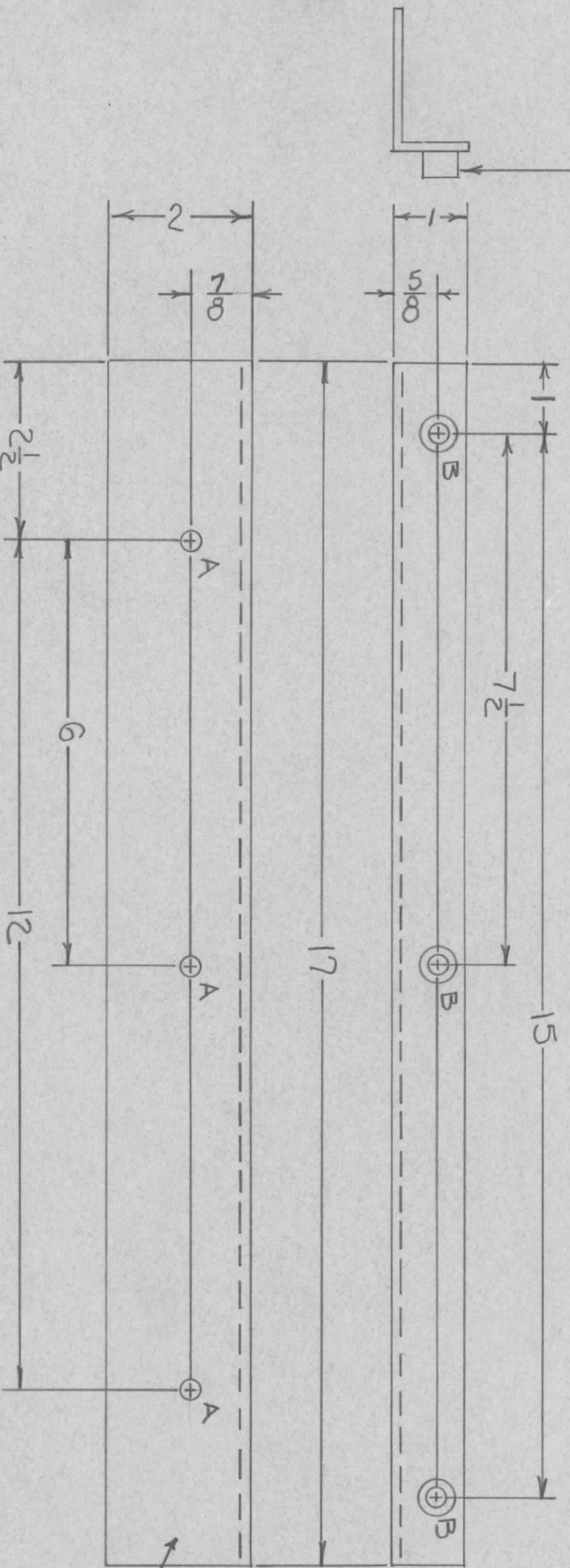
REQ'D ITEM	PART NUMBER	DESCRIPTION	SYM.
POSE		LIST OF MATERIAL SKHFS MS1	

FINAL APPROVAL	DATE	MECH. DES.	DATE	DATE	DATE
<i>MS</i>	12/4/68	<i>MS</i>	12/4/68	10/11/68	9-25-68
CHECKED	DATE	DRAWN	DATE	DATE	DATE
<i>MS</i>	10/11/68	<i>MS</i>	9-25-68		

THE TECHNICAL MATERIEL CORP.	MAMARONECK, NEW YORK		
CHASSIS, MAIN	250KHZ DIVIDER		
SIZE	CODE IDENT. NO.	DWG NO.	ISSUE
B	82679	MS5427	Ø
SCALE	SHEET	OF	

REVISIONS							
ZONE	LTR	DESCRIPTION	DATE	E.M.N. NO	DRAFT	CHKD	APPD
	X	EXP. RELEASE	9-23-68			A.P.	
	Ø	ORIG. RELEASE FOR PROD.	9-26-68	Ø		R.G.	

① MOUNT ITEM IN ALL B HOLES AS SHOWN AFTER FINISHING



HOLE	DESCRIPTION	REQ.
A	9/32 DIA.	3
B	.344 ~ .347 DIA.	3

MARK TMC PART NUMBER 1/8 HIGH GOTHIC WITH LATEST REVISION LETTER

UNLESS OTHERWISE SPECIFIED:

1. USE MATERIAL THICKNESS FOR MAXIMUM RADIUS ON ALL BENDS.
2. ALL ANGULAR BENDS 90 DEGREES.
3. REMOVE ALL BURRS AND SHARP EDGES.
4. MOUNT INSERTS AFTER FINISHING.

QTY / UNIT	1	BCTIOKA	AXG81
MODEL USED ON	APPLICATION		
CODE			

NOTICE TO PERSONS RECEIVING THIS DRAWING  
 THE TECHNICAL MATERIEL CORPORATION claims proprietary right in the material disclosed hereon. This drawing is issued in confidence for engineering information only and may not be reproduced or used to manufacture anything shown hereon without permission from THE TECHNICAL MATERIEL CORPORATION to the user. This drawing is loaned for mutual assistance and is subject to recall at any time.

DECIMALS	X ± .05	TOLS.	1/64
	.XX ± .01	ANGLES	0° - 30'
	.XXX ± .005		
MATERIAL	5052-H32		
FINISH	8 ALUMINUM		
	S404 ~ YEL. IRIDITE		

REQ'D ITEM	3	1	MT129-2520-6	NUT, ROUND, SPUN TYPE	B
PART NUMBER	E. BUDETTI				

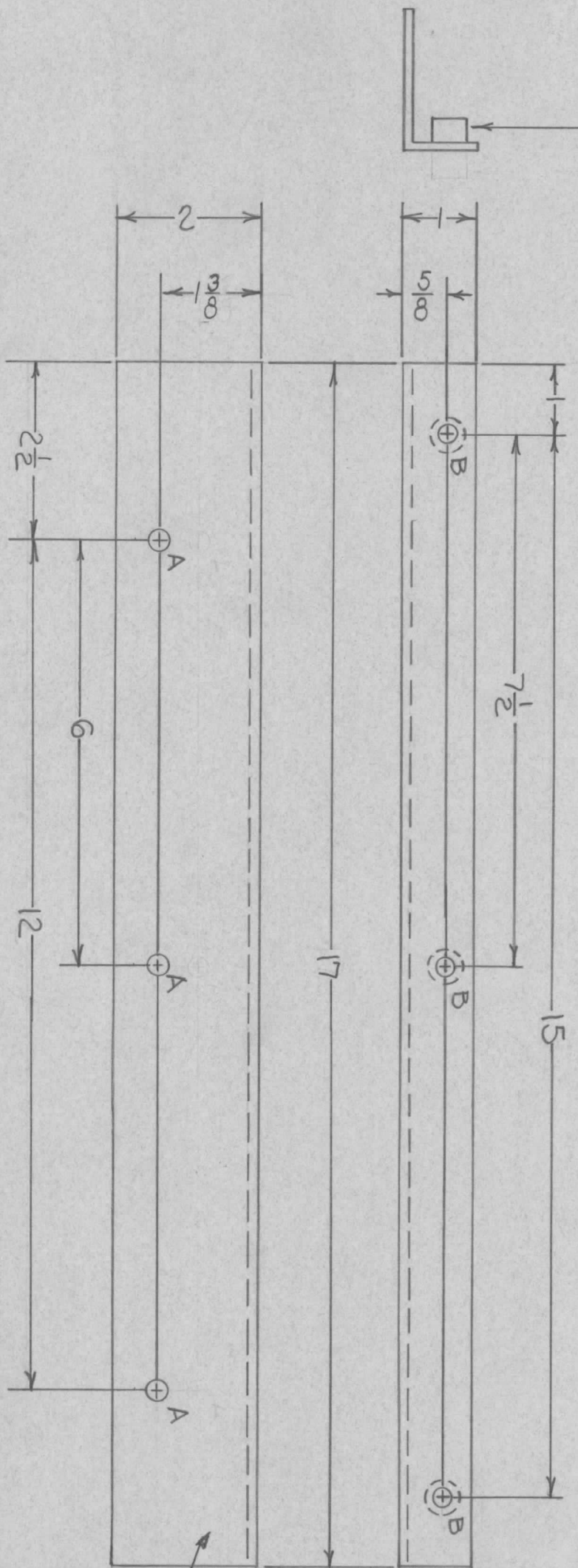
THE TECHNICAL MATERIEL CORP.  
 MAMARONECK, NEW YORK

SUPPORT, TOP, CONTACTOR

FINAL APPROVAL	DATE	MECH. DES.	DATE	ELECT. DES.	DATE	CHECKED	DATE	DRAWN	DATE	SIZE	CODE IDENT. NO.	DWG NO.	ISSUE
<i>[Signature]</i>	9-68	<i>[Signature]</i>	9/24/68	<i>[Signature]</i>	9/24/68	<i>[Signature]</i>	9/24/68	A. PETROCCA	9/68	B	82679	MS 5429	Ø
SCALE 2:1										SHEET	OF		

REVISIONS							
ZONE	LTR	DESCRIPTION	DATE	E.M.N.NO	DRAFT	CHKD	APPD
	X	EXP. RELEASE	9-28-68		A.P.		
	Ø	ORIG. RELEASE FOR PROD.	9-26-68	Ø	R.G.		<i>[Signature]</i>

① MOUNT ITEM 1 IN ALL B HOLES AS SHOWN, AFTER FINISHING.



HOLE	DESCRIPTION	REQ.
A	9/32 DIA.	3
B	.344-.347 DIA.	3

MARK TMC PART NUMBER 1/8 HIGH GOTHIC WITH LATEST REVISION LETTER

REQ'D ITEM	PART NUMBER	DESCRIPTION	SYM.
3	1	NT129-2520-6 NUT, ROUND, SPLINE TYPE	B

THE TECHNICAL MATERIEL CORP.  
MAMARONECK, NEW YORK

SUPPORT, BOTTOM, CONTACTOR

FINAL APPROVAL	DATE	MECH. DES.	DATE	ELECT. DES.	DATE	CHECKED	DATE	DRAWN	DATE	SIZE	CODE IDENT. NO.	DWG NO.	ISSUE
<i>[Signature]</i>	9-6-68	<i>[Signature]</i>	9/26/68	<i>[Signature]</i>	9/24/68	<i>[Signature]</i>	9/24/68	A. PETROCCA	9/68	B	82679	MS 5430	Ø

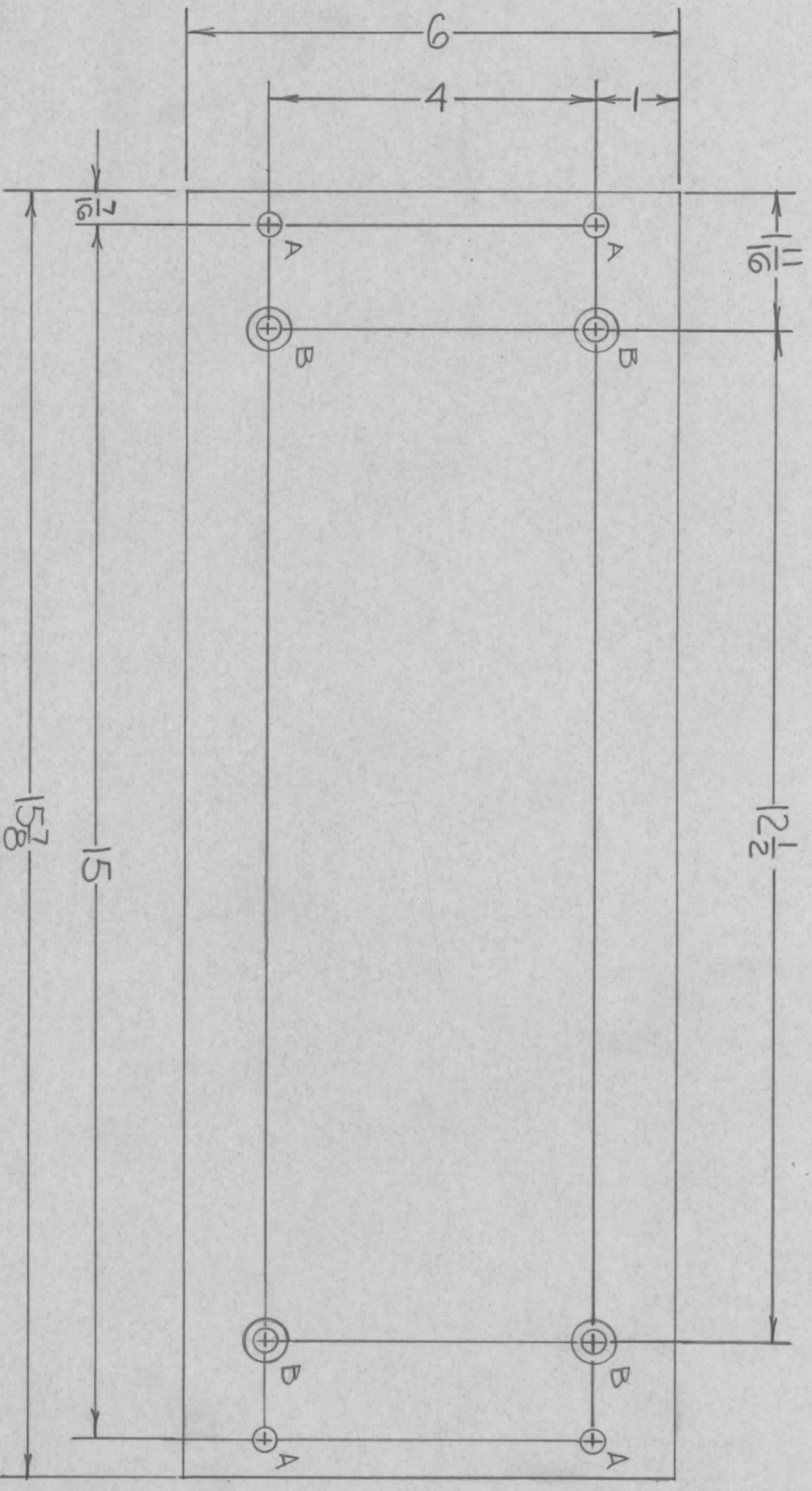
QTY / UNIT	MODEL USED ON	ASS'Y NO.
1	BCTIOKA	AXG81
APPLICATION		
CODE		

NOTICE TO PERSONS RECEIVING THIS DRAWING  
THE TECHNICAL MATERIEL CORPORATION claims proprietary right in the material disclosed hereon. This drawing is issued in confidence for engineering information only and may not be reproduced or used to manufacture anything shown hereon without permission from THE TECHNICAL MATERIEL CORPORATION to the user. This drawing is loaned for mutual assistance and is subject to recall at any time.

UNLESS OTHERWISE SPECIFIED:

1. USE MATERIAL THICKNESS FOR MAXIMUM RADIUS ON ALL BENDS.
2. ALL ANGULAR BENDS 90 DEGREES.
3. REMOVE ALL BURRS AND SHARP EDGES.
4. MOUNT INSERTS AFTER FINISHING.

REVISIONS							
ZONE	LTR	DESCRIPTION	DATE	E.M.N.NO	DRAFT	CHKD	APPD
X		EXP. RELEASE	9-23-68		AP		
Ø		ORIG. RELEASE FOR PROD.	9-26-68	Ø	R.G.		AP



HOLE	DESCRIPTION	REQ.
A	9/32 DIA.	4
B	DRILL .270 DIA. CSINK 82° TO .520 DIA.	4

MARK TMC PART NUMBER  
1/8 HIGH GOTHIC WITH LATEST  
REVISION LETTER ON REAR

REQ'D ITEM	PART NUMBER	DESCRIPTION	SYM.
F. BUDETTI		LIST OF MATERIAL	

QTY / UNIT	MODEL USED ON	ASSY NO.
1	BCT10KA	AXG81
	APPLICATION	
	CODE	

DECIMALS	FRACTIONS
.X ± .05	1/64
.XX ± .01	ANGLES
.XXX ± .005	0° - 30'

UNLESS OTHERWISE SPECIFIED DIMENSIONS ARE IN INCHES AND INCLUDE CHEMICALLY APPLIED OR PLATED FINISHES

FINAL APPROVAL	DATE
<i>[Signature]</i>	9-68
Mech. Des.	DATE
<i>[Signature]</i>	9-26-68
Elect. Des.	DATE
<i>[Signature]</i>	9-26-68
Checked	DATE
<i>[Signature]</i>	9-26-68
Drawn	DATE
ALPETROCCA	9/68

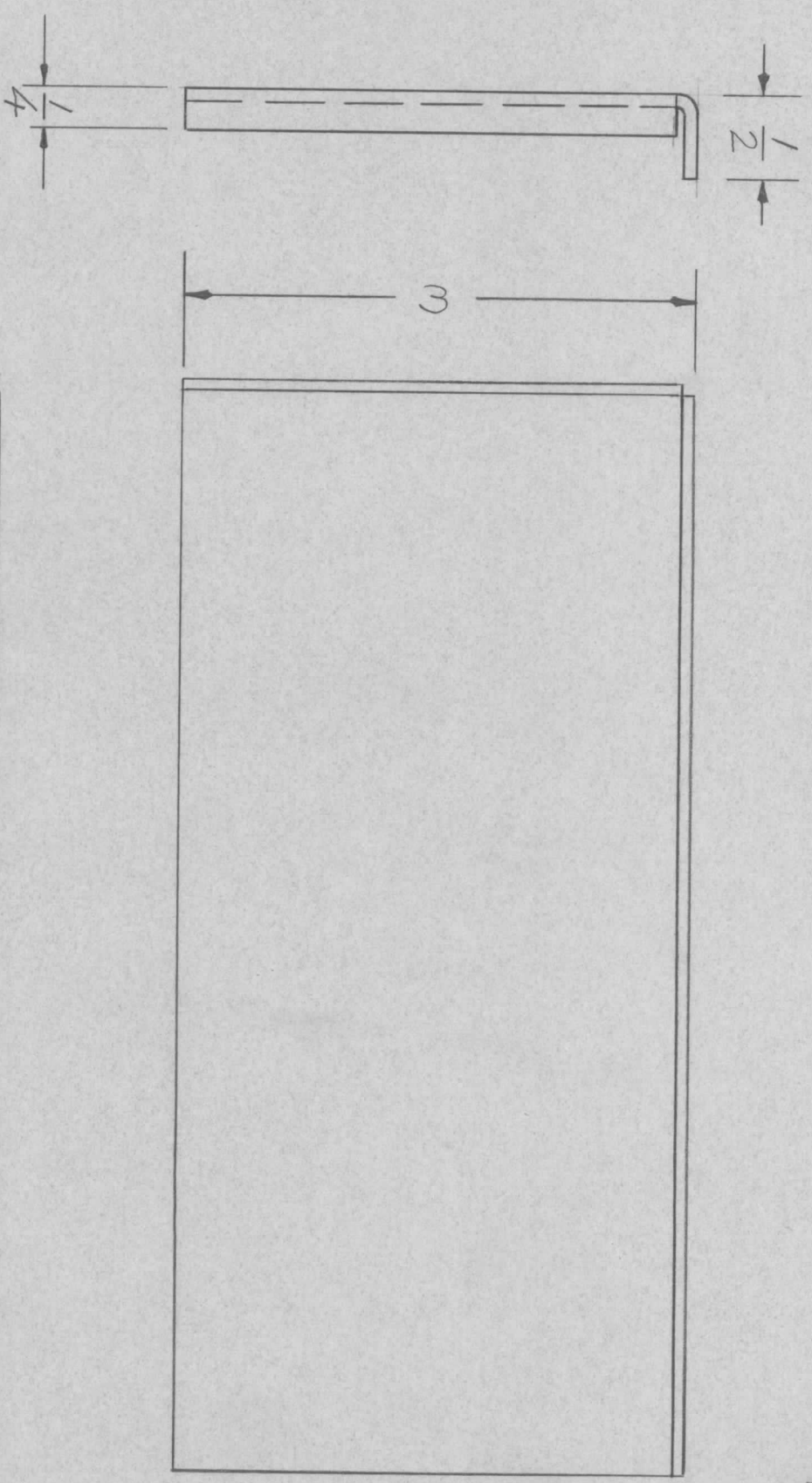
UNLESS OTHERWISE SPECIFIED:  
1. USE MATERIAL THICKNESS FOR MAXIMUM RADIUS ON ALL BENDS.  
2. ALL ANGULAR BENDS 90 DEGREES.  
3. REMOVE ALL BURRS AND SHARP EDGES.

NOTICE TO PERSONS RECEIVING THIS DRAWING  
THE TECHNICAL MATERIEL CORPORATION claims proprietary right in the material disclosed hereon. This drawing is issued in confidence for engineering information only and may not be reproduced or used to manufacture anything shown hereon without permission from THE TECHNICAL MATERIEL CORPORATION to the user. This drawing is loaned for mutual assistance and is subject to recall at any time.

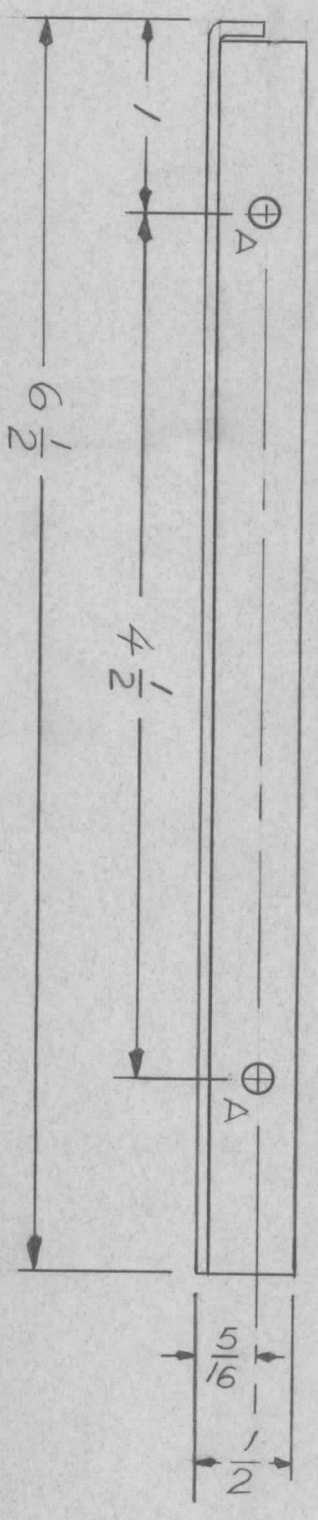
SIZE	CODE IDENT. NO.	DWG NO.	ISSUE
B	82679	MS5431	Ø
SCALE	SHEET		OF
2:1			1



REVISIONS						
ZONE	LTR	DESCRIPTION	DATE	E.M.N.NO	DRAFT	CHKD
	X	EXP RELEASE	22569	4	GE	
	Ø	ORIG. RELEASE FOR PROD.	3/4/69		RG	



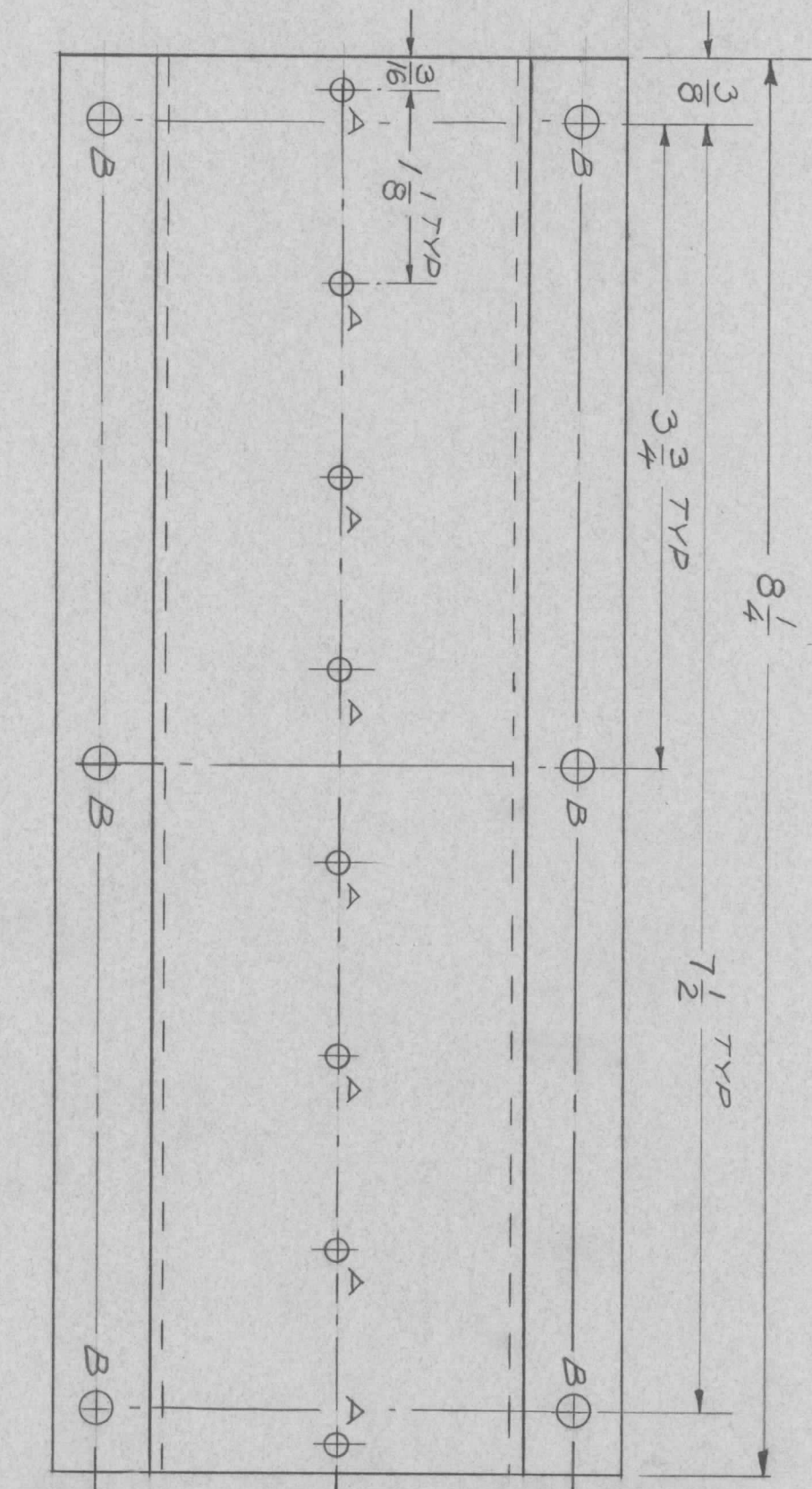
"A" HOLE 1/4 DIA.



QTY / UNIT	MODEL USED ON	ASS'Y NO.
1	RTIH-3	
APPLICATION		
CODE		
<p>UNLESS OTHERWISE SPECIFIED DIMENSIONS ARE IN INCHES AND INCLUDE CHEMICALLY APPLIED OR PLATED FINISHES</p> <p>DECIMALS .X ± .05 TOLS. .XX ± .01 .XXX ± .005</p> <p>FRACTIONS 1/64 ANGLES 90° .30'</p>		
MATERIAL		
5052-ALUM. AL		
FINISH		
S404 YEL IRIDITE		
REQ'D ITEM	PART NUMBER	DESCRIPTION
		THE TECHNICAL MATERIEL CORP. MAMARONECK, NEW YORK
LIST OF MATERIAL		
FINAL APPROVAL	DATE	
<i>[Signature]</i>	3-3-69	
MECH. DES.	DATE	
<i>[Signature]</i>	3-3-69	
ELECT. DES.	DATE	
CHECKED	DATE	
<i>[Signature]</i>	3/3/69	
DRAWN	DATE	
<i>[Signature]</i>	2/25/69	
SIZE	CODE IDENT. NO.	DWG NO.
B	82679	MS 5449
SCALE	1:1	SHEET OF

NOTICE TO PERSONS RECEIVING THIS DRAWING  
THE TECHNICAL MATERIEL CORPORATION claims proprietary right in the material disclosed hereon. This drawing is issued in confidence for engineering information only and may not be reproduced or used to manufacture anything shown hereon without permission from THE TECHNICAL MATERIEL CORPORATION to the user. This drawing is loaned for mutual assistance and is subject to recall at any time.

REVISIONS							
ZONE	LTR	DESCRIPTION	DATE	E.M.N. NO	DRAFT	CHKD	APPD
	X	EXP RELEASE	22769		GE		
	Ø	ORIG. RELEASE FOR PROD.	22869		RG		



② MOUNT IT 1 WITH IT 2  
IN A HOLES AFTER  
① FINISHING

REQ'D ITEM	PART NUMBER	DESCRIPTION	SYM.
8	EY100-1	EYELET	
2	FPI60K8.250N	CONTACT ELECTRIC	

SYM	HOLE SIZE	REQ
A	1/8	8
B	11/64	6

QTY / UNIT	2	MODEL USED ON	HFRR-4	ASS'Y NO.	BMA-291
APPLICATION					
CODE					

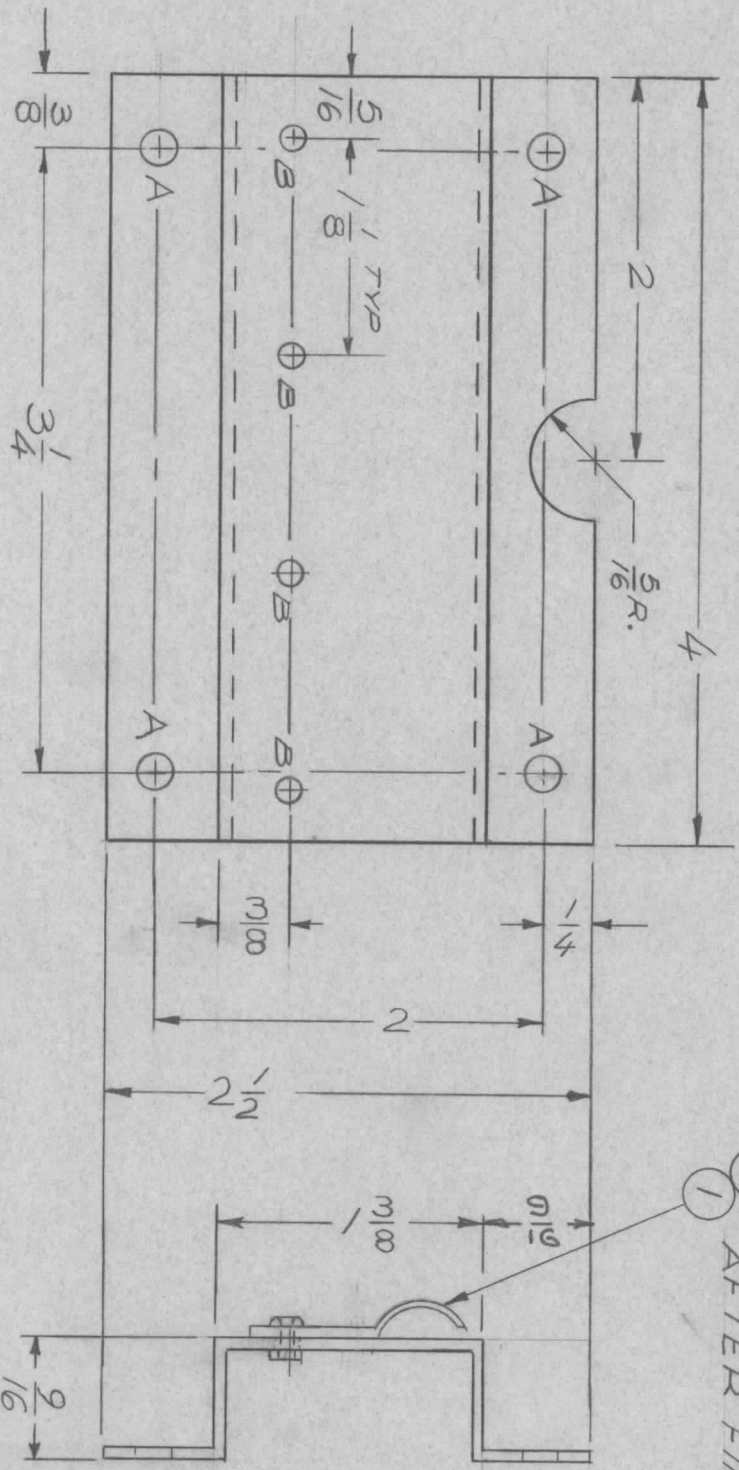
UNLESS OTHERWISE SPECIFIED DIMENSIONS ARE IN INCHES AND INCLUDE CHEMICALLY APPLIED OR PLATED FINISHES	DECIMALS	FRACTIONS
.X ± .05	1/64	
.XX ± .01	TOLS.	ANGLES
.XXX ± .005		0° - 30°
MATERIAL .064 ALUM		
5052-H 32		
FINISH S404		
YELLOW IRIDITE		

FINAL APPROVAL	DATE	2/28/69
MECH. DES.	DATE	2/28/69
ELECT. DES.	DATE	
CHECKED	DATE	2/28/69
DRAWN	DATE	2/27/69

NOTICE TO PERSONS RECEIVING THIS DRAWING  
THE TECHNICAL MATERIEL CORPORATION claims proprietary right in the material disclosed hereon. This drawing is issued in confidence for engineering information only and may not be reproduced or used to manufacture anything shown hereon without permission from THE TECHNICAL MATERIEL CORPORATION to the user. This drawing is loaned for mutual assistance and is subject to recall at any time.

LIST OF MATERIAL	THE TECHNICAL MATERIEL CORP.		
	MAMARONECK, NEW YORK		
BRACKET, GROUNDING TUNER			
SIZE	CODE IDENT. NO.	DWG NO.	ISSUE
B	82679	MS 5450	Ø
SCALE	1:1	SHEET	OF

REVISIONS							
ZONE	LTR	DESCRIPTION	DATE	E.M.N. NO	DRAFT	CHKD	APPD
	X	EXP RELEASE	2/27/69	---	CE		
	Ø	ORIG. RELEASE FOR PROD.	2/28/69		RG		JDO



SYM	HOLE SIZE	REQ
A	1/16	4
B	1/8	4

QTY / UNIT	4
MODEL USED ON	HERR-4
ASS'Y NO.	BMA291
APPLICATION	
CODE	

**NOTICE TO PERSONS RECEIVING THIS DRAWING**  
 THE TECHNICAL MATERIEL CORPORATION claims proprietary right in the material disclosed hereon. This drawing is issued in confidence for engineering information only and may not be reproduced or used to manufacture anything shown hereon without permission from THE TECHNICAL MATERIEL CORPORATION to the user. This drawing is loaned for mutual assistance and is subject to recall at any time.

UNLESS OTHERWISE SPECIFIED DIMENSIONS ARE IN INCHES AND INCLUDE CHEMICALLY APPLIED OR PLATED FINISHES

DECIMALS: .X ± .05, .XX ± .01, .XXX ± .005  
 FRACTIONS: 1/64  
 ANGLES: 0° - 30°

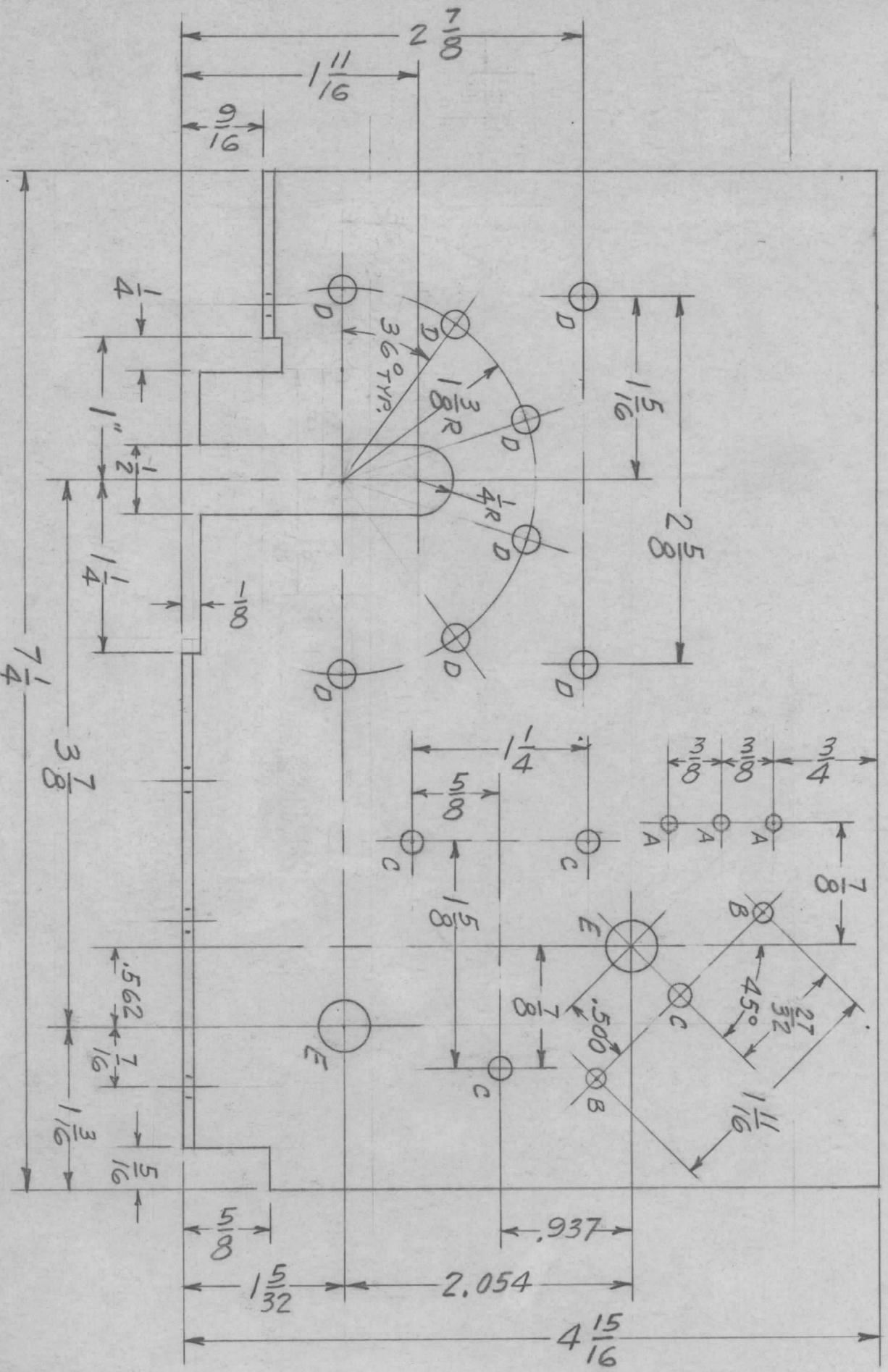
MATERIAL: ALUM. 064  
 FINISH: S404  
 YELLOW IRIDITE

REQ'D ITEM	PART NUMBER	DESCRIPTION	SYM.
4	EY100-1	EYELET	
1	FP160K3.750N	CONTACT, ELECTRIC	

FINAL APPROVAL	DATE	2/28/69
MECH. DES.	DATE	2/28/69
ELECT. DES.	DATE	
CHECKED	DATE	2/28/69
DRAWN	DATE	2/27/69

THE TECHNICAL MATERIEL CORP.	MAMARONECK, NEW YORK		
BRACKET, GROUNDING,	OSC		
SIZE	CODE IDENT. NO.	DWG NO.	ISSUE
B	82679	MS5451	Ø
SCALE 1:1	SHEET	OF	

REVISIONS							
ZONE	LTR	DESCRIPTION	DATE	E.M.N. NO.	DRAFT	CHKD	APPD
	X	2.054 DIM. WAS 2.050	3-23-69		D.A.C.		
	Ø	ORIGINAL RELEASE	8/8/69		QJ		



HOLE	DESCRIPTION	REQ
A	1/8 DIA.	3
B	3/64 DIA.	2
C	11/64 DIA.	8
D	13/64 DIA.	8
E	3/8 DIA.	2

QTY / UNIT	1	MTRM-150	MODEL USED ON	ASSY NO.
APPLICATION				
CODE				

**NOTICE TO PERSONS RECEIVING THIS DRAWING**  
 THE TECHNICAL MATERIEL CORPORATION claims proprietary right in the material disclosed hereon. This drawing is issued in confidence for engineering information only and may not be reproduced or used to manufacture anything shown hereon without permission from THE TECHNICAL MATERIEL CORPORATION to the user. This drawing is loaned for mutual assistance and is subject to recall at any time.

DECIMALS	FRACTIONS
X ± .05	1/64
.XX ± .01	ANGLES
.XXX ± .005	0° - 30'
MATERIAL, 081 ALUM	
5052 H 32	
FINISH	
5404 YEL. IRIDITE	

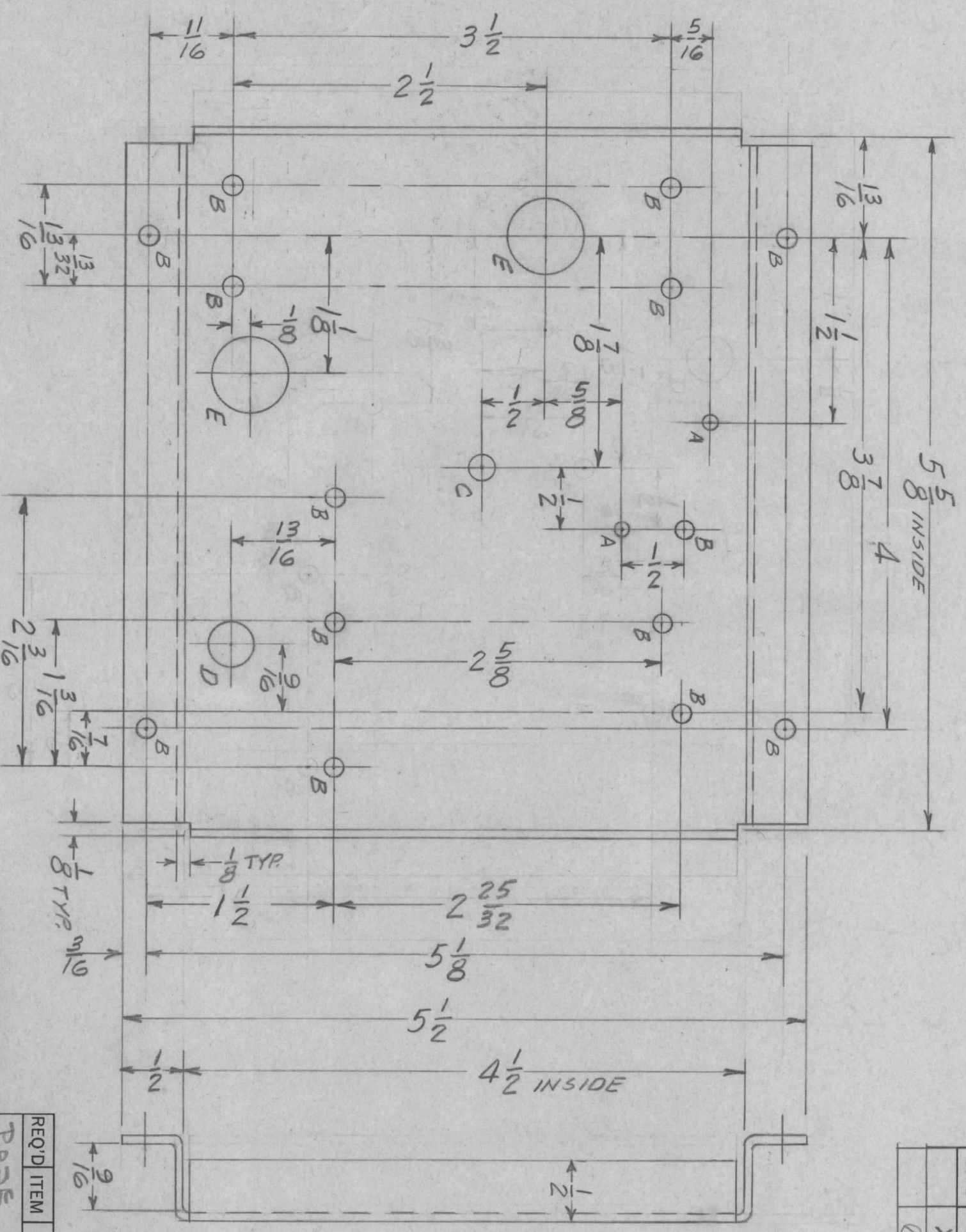
REQ'D ITEM	PART NUMBER	DESCRIPTION	SYM.
POSE		LIST OF MATERIAL SK 3308MSQ8	

**THE TECHNICAL MATERIEL CORP.**  
 MAMARONECK, NEW YORK

FOR COLS & VAR. TUNING CAP.  
**BRACKET**

SIZE	CODE IDENT. NO.	DWG NO.	ISSUE
B	82679	MS 5466	Ø
SCALE		SHEET	OF

REVISIONS							
ZONE	LTR	DESCRIPTION	DATE	E.M.N.NO	DRAFT	CHKD	APPD
	X	REVISED	1-20-69				MAC
	Ø	ORIGINAL RELEASE	8/8/69				



HOLE	DESCRIPTION	REQ
A	.158 DIA DEBURR	2
B	11/64 DIA	14
C	13/64 DIA	1
D	3/8 DIA.	1
E	5/8 DIA.	2

QTY / UNIT	1	MODEL USED ON	MTRM-150	ASSY NO.	
		APPLICATION		CODE	

NOTICE TO PERSONS RECEIVING THIS DRAWING  
 THE TECHNICAL MATERIEL CORPORATION claims proprietary right in the material disclosed hereon. This drawing is issued in confidence for engineering information only and may not be reproduced or used to manufacture anything shown hereon without permission from THE TECHNICAL MATERIEL CORPORATION to the user. This drawing is loaned for mutual assistance and is subject to recall at any time.

DECIMALS	FRACTIONS
.X ± .05	1/64
.XX ± .01	ANGLES
.XXX ± .005	0° - 30°

UNLESS OTHERWISE SPECIFIED DIMENSIONS ARE IN INCHES AND INCLUDE CHEMICALLY APPLIED OR PLATED FINISHES

MATERIAL .063ALUM.  
 5052H32

FINISH  
 5404 YEL. IRIDITS

REQ'D ITEM	PART NUMBER	DESCRIPTION	SYM.
POSE		LIST OF MATERIAL SK3308 MS18	

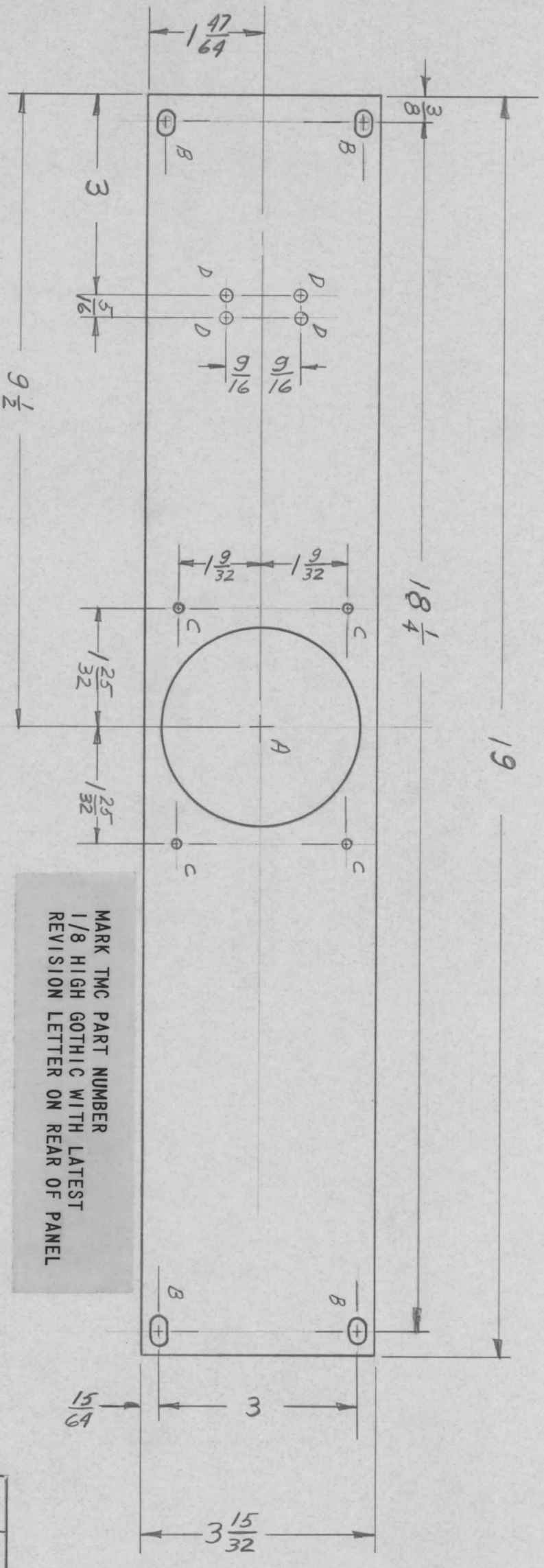
FINAL APPROVAL	DATE	7/8/69
MECH. DES.	DATE	7/8/69
ELECT. DES.	DATE	7/8/69
CHECKED	DATE	7-2-69
DRAWN	DATE	7/2/69

SIZE	CODE IDENT. NO.	DWG NO.	ISSUE
B	82679	MS 5467	Ø
SCALE		SHEET	OF

THE TECHNICAL MATERIEL CORP.  
 MAMARONECK, NEW YORK

CAPACITOR & LEDEX  
 SUPPORT

REVISIONS							
ZONE	LTR	DESCRIPTION	DATE	E.M.N. NO	DRAFT	CHKD	APPD
		ORIGINAL RELEASE	7/16/89		BN		



MARK TMC PART NUMBER  
1/8 HIGH GOTHIC WITH LATEST  
REVISION LETTER ON REAR OF PANEL

FRONT VIEW SHOWN

**MACHINING:**

1. MILL ALL EDGES.
2. HOLES MUST BE DRILLED, UNLESS OTHERWISE SPECIFIED.
3. LATERAL BOW OF PANEL MUST BE KEPT TO .031 TOLERANCE.
4. PANEL MUST BE FREE OF ALL MACHINING MARKS, GOUGES AND SCRATCHES. IF NECESSARY, SAND FRONT OF PANEL WITH NO. 120 GRIT SANDPAPER.

*Handwritten notes:*  
A - 3" DIA  
B - 1/8" X 29/64 SLOT 4 REQ  
C - 1/8" DIA  
D - 1/16" DIA

SYM	DESCRIPTION	REQ
A	3" DIA	1
B	1/4 X 29/64 SLOT	4
C	1/8" DIA	4
D	3/64 DIA	4

REQ'D ITEM	PART NUMBER	DESCRIPTION	SYM.
		LIST OF MATERIAL	

THE TECHNICAL MATERIEL CORP.  
MAMARONECK, NEW YORK

PANEL, FRONT

- FINISH NOTES:**
1. S404 - IRIDITE 14-2 AL-COAT.
  2. S114 - ZINC CHROMATE PRIMER
  3. S115 - SMOOTH GRAY ENAMEL
- FRONT AND EDGES ONLY

QTY / UNIT	1	MODEL USED ON	LSP-12	ASS'Y NO.	
APPLICATION		CODE			

NOTICE TO PERSONS RECEIVING THIS DRAWING  
THE TECHNICAL MATERIEL CORPORATION claims proprietary right in the material disclosed hereon. This drawing is issued in confidence for engineering information only and may not be reproduced or used to manufacture anything shown hereon without permission from THE TECHNICAL MATERIEL CORPORATION to the user. This drawing is loaned for mutual assistance and is subject to recall at any time.

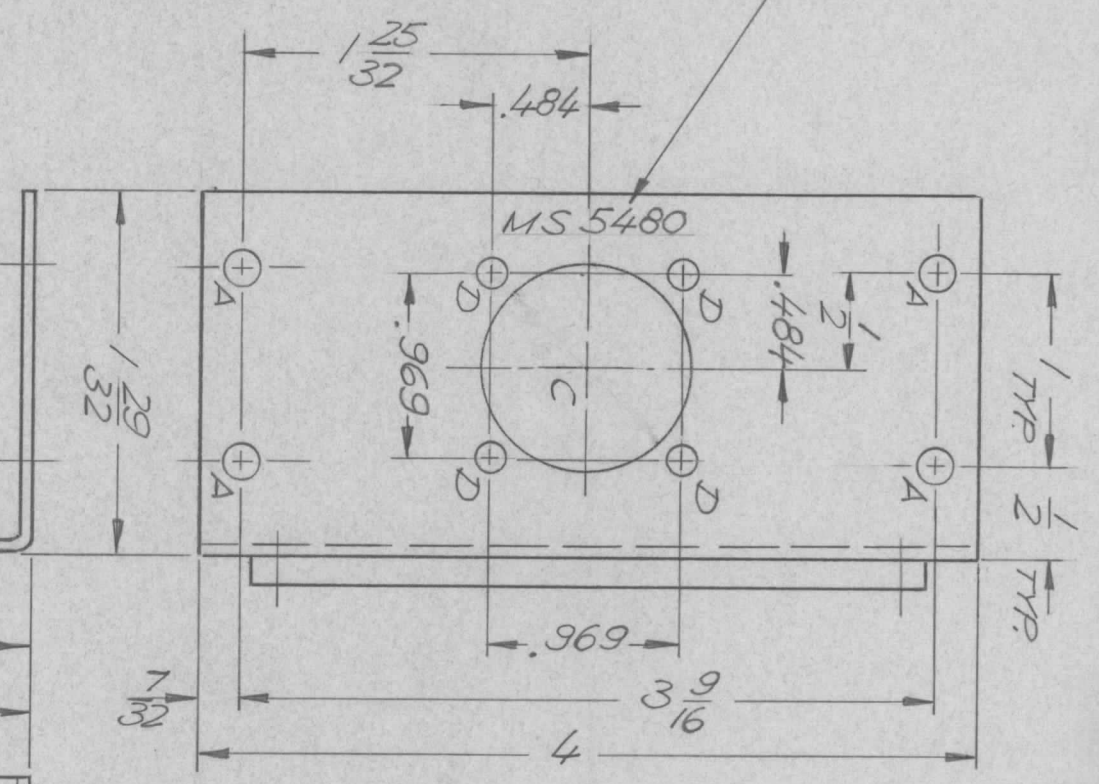
UNLESS OTHERWISE SPECIFIED DIMENSIONS ARE IN INCHES AND INCLUDE CHEMICALLY APPLIED OR PLATED FINISHES	DECIMALS	FRACTIONS
X ± .05	1/64	ANGLES
.XX ± .01		0° - 30'
.XXX ± .005		
MATERIAL	3 ALUM	
FINISH	2024-T3	

FINAL APPROVAL	DATE
<i>POSE</i>	7/16/89
MECH. DES.	DATE
<i>BM</i>	12/20/89
ELECT. DES.	DATE
	11/20/89
CHECKED	DATE
<i>BM</i>	7/16/89
DRAWN	DATE
<i>BM</i>	11/20/89

SIZE	CODE IDENT. NO.	DWG. NO.	ISSUE
B	82679	MS 5477	0
SCALE		SHEET	OF

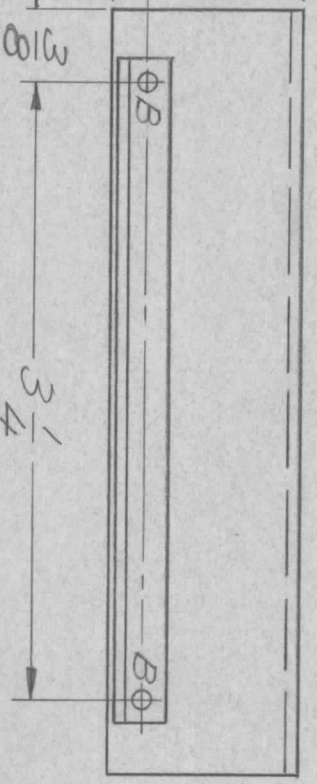
REVISIONS							
ZONE	LTR	DESCRIPTION	DATE	E.M.N. NO	DRAFT	CHKD	APPD
	X	EXP. RELEASE	5/9/69		KH		
	Ø	ORIG RELEASE FOR PROD	9/2/69		CV		

MARK TWC P/NO  
1/8 HIGH GOTHIC  
WITH LATEST  
REV. LETTERS



- UNLESS OTHERWISE SPECIFIED:
1. USE MATERIAL THICKNESS FOR MAXIMUM RADIUS ON ALL BENDS.
  2. ALL ANGULAR BENDS 90 DEGREES.
  3. REMOVE ALL BURRS AND SHARP EDGES.
  4. MOUNT IT. 1 & 2 AFTER FINISHING.

1 MOUNT IN  
2 "B" HOLE



HOLE LEGEND:

- A ~ 11/64 DIA. (4 REQ.)
- B ~ .067 DIA. (2 REQ.)
- C ~ 1-1/16 DIA. (1 REQ.)
- D ~ 9/64 DIA. (4 REQ.)

REQ'D ITEM	PART NUMBER	DESCRIPTION	SYM.
1	CU157-4	RETAINER, PC BOARD	B
2	EY100-5	EYELET, FLAT FLANGE	B

LIST OF MATERIAL

THE TECHNICAL MATERIEL CORP.  
MAMARONECK, NEW YORK

BRACKET, MTG. RETAINER

QTY / UNIT	1	MODEL USED ON	CHGM-4	ASS'Y NO.	BWA 256
APPLICATION					
CODE					

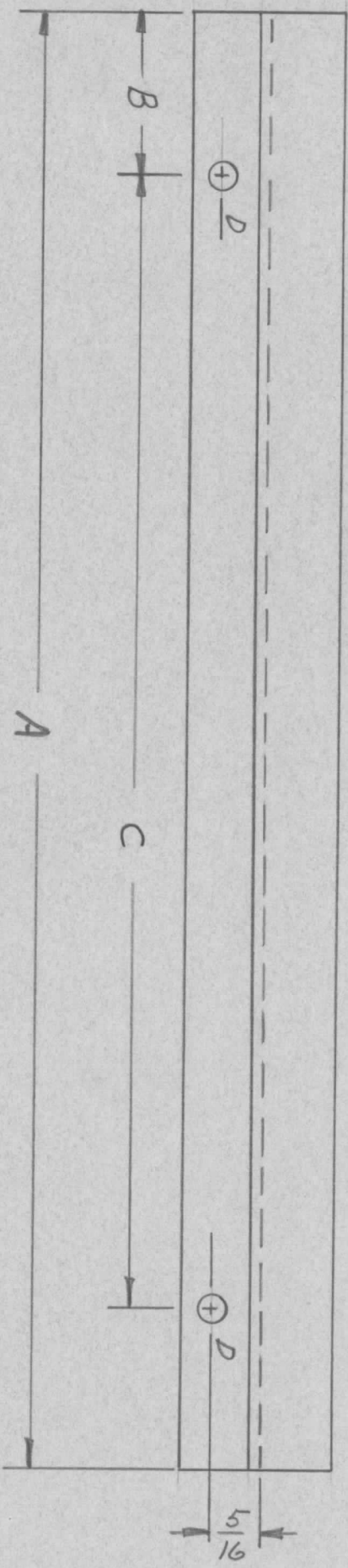
UNLESS OTHERWISE SPECIFIED DIMENSIONS ARE IN INCHES AND INCLUDE CHEMICALLY APPLIED OR PLATED FINISHES	DECIMALS	FRACTIONS
X ± .05	1/64	
.XX ± .01		ANGLES
.XXX ± .005		0° - 30'
MATERIAL	.063 ALUM.	
FINISH	S 404	
	YEL. IRIDITE	

NOTICE TO PERSONS RECEIVING THIS DRAWING  
THE TECHNICAL MATERIEL CORPORATION claims proprietary right in the material disclosed hereon. This drawing is issued in confidence for engineering information only and may not be reproduced or used to manufacture anything shown hereon without permission from THE TECHNICAL MATERIEL CORPORATION to the user. This drawing is loaned for mutual assistance and is subject to recall at any time.

FINAL APPROVAL	DATE
MECH. DES.	DATE
ELECT. DES.	DATE
CHECKED	DATE
DRAWN	DATE

SIZE	CODE IDENT. NO.	DWG NO.	ISSUE
B	82679	MS 5480	Ø
SCALE	1:1	SHEET	OF

REVISIONS						
ZONE	LTR	DESCRIPTION	DATE	E.M.N. NO	DRAFT	CHKD
Φ		ORIGINAL RELEASE	5/29/69		W	



PART NO.	A	B	C
M55484-1	6	7	5
M55484-2	15 3/16	2	11 3/16

*D ~ 1/4 D. 2 REQ.*

- FINISH NOTES:
- S404 - IRIDITE 14-2 AL-COAT
  - S114 - ZINC CHROMATE PRIMER
  - S520 - *TEVULOID BLUE*
- OR  
PRIME AND PAINT PER CUSTOMER'S SPECIFICATIONS.

*ALL SURFACES*

QTY / UNIT	MODEL USED ON	ASS'Y NO.
	<i>BRR136-1</i>	<i>A4797</i>
APPLICATION		
CODE		

NOTICE TO PERSONS RECEIVING THIS DRAWING  
THE TECHNICAL MATERIEL CORPORATION claims proprietary right in the material disclosed hereon. This drawing is issued in confidence for engineering information only and may not be reproduced or used to manufacture anything shown hereon without permission from THE TECHNICAL MATERIEL CORPORATION to the user. This drawing is loaned for mutual assistance and is subject to recall at any time.

UNLESS OTHERWISE SPECIFIED DIMENSIONS ARE IN INCHES AND INCLUDE CHEMICALLY APPLIED OR PLATED FINISHES	
DECIMALS	FRACTIONS
.X ± .05	1/64
.XX ± .01	ANGLES
.XXX ± .005	0° .30'

MATERIAL: *064 ALUM*  
FINISH: *5052-H32*  
*SEE NOTE*

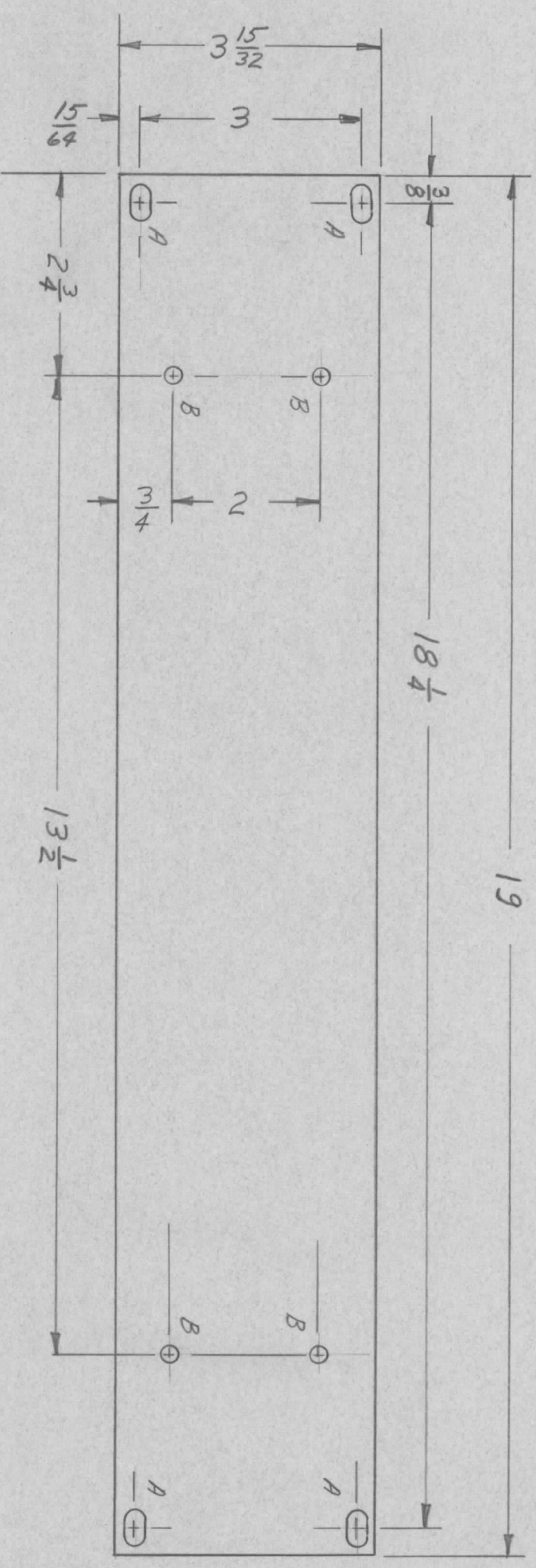
REQ'D ITEM	PART NUMBER	DESCRIPTION	SYM.
<i>POSE</i>		LIST OF MATERIAL	

FINAL APPROVAL	DATE	<b>THE TECHNICAL MATERIEL CORP.</b> MAMARONECK, NEW YORK  <i>BRACKET, AIR FILTER</i>
MECH. DES.	DATE	
ELECT. DES.	DATE	
CHECKED	DATE	
DRAWN	DATE	

SIZE	CODE IDENT. NO.	DWG NO.	ISSUE
B	82679	M55484	Φ
SCALE			



REVISIONS						
ZONE	LTR	DESCRIPTION	DATE	E.M.N.NO	DRAFT	CHKD
Ø		ORIGINAL RELEASE	5/22/69		AD	



A ~ 1/4 x 29/64 SLOT 4 REQ.  
 B ~ 13/64 DIA. 4 REQ.

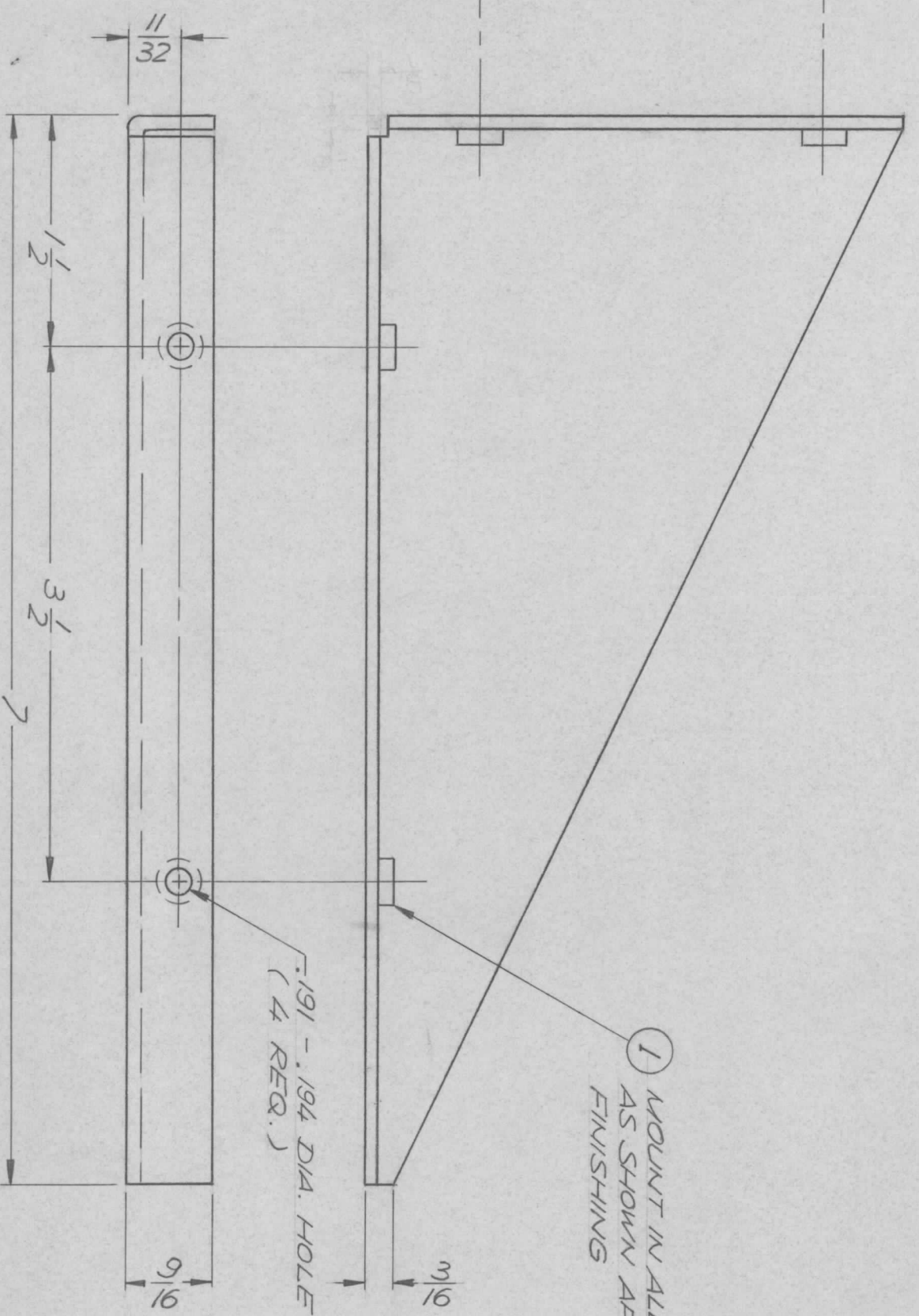
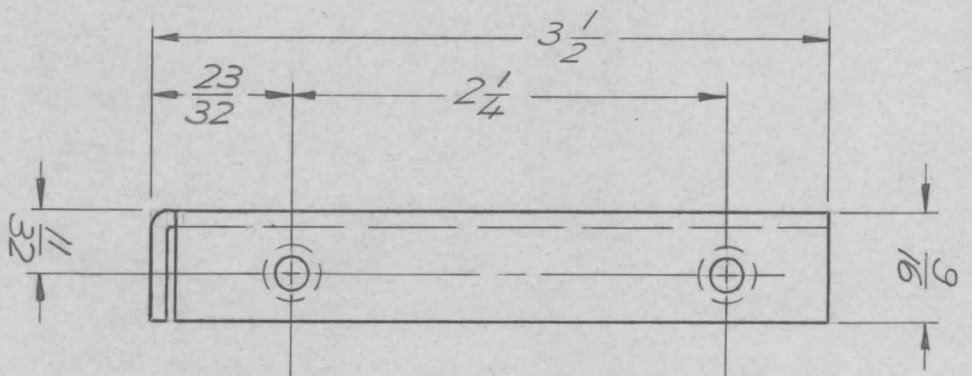
QTY / UNIT	1	MODEL USED ON	DDRE-10 N2	ASS'Y NO.	BAK135-2
APPLICATION					
CODE					

UNLESS OTHERWISE SPECIFIED DIMENSIONS ARE IN INCHES AND INCLUDE CHEMICALLY APPLIED OR PLATED FINISHES  
 DECIMALS: .X ± .05 TOLS. FRACTIONS: 1/64 ANGLES: 0° - 30'  
 .XX ± .01  
 .XXX ± .005  
 MATERIAL 3/16 ALUM  
 2024 T3  
 FINISH 5904 YEL. IRID.

REQ'D ITEM	Pose	PART NUMBER		DESCRIPTION	THE TECHNICAL MATERIEL CORP. MAMARONECK, NEW YORK	SYM.	
FINAL APPROVAL	[Signature]	DATE	9/5/69	LIST OF MATERIAL			
MECH. DES.	[Signature]	DATE	20/11/69	PANEL, FILTER MFG.			
ELECT. DES.	[Signature]	DATE	20/11/69	THE TECHNICAL MATERIEL CORP.			
CHECKED	[Signature]	DATE	5/20/69	MAMARONECK, NEW YORK			
DRAWN	[Signature]	DATE	14/11/69	SCALE			
SIZE		CODE IDENT. NO.	DWG NO.	ISSUE			
B		82679	MS 5486	Ø			
SCALE		SHEET		OF			

NOTICE TO PERSONS RECEIVING THIS DRAWING  
 THE TECHNICAL MATERIEL CORPORATION claims proprietary right in the material disclosed hereon. This drawing is issued in confidence for engineering information only and may not be reproduced or used to manufacture anything shown hereon without permission from THE TECHNICAL MATERIEL CORPORATION to the user. This drawing is loaned for mutual assistance and is subject to recall at any time.

REVISIONS							
ZONE	LTR	DESCRIPTION	DATE	E.M.N. NO.	DRAFT	CHKD	APPD
	X	EXP. RELEASE	6/10/69			K. H. [Signature]	
	Ø	ORIGINAL RELEASE	5/18/69			[Signature]	



- UNLESS OTHERWISE SPECIFIED:
1. USE MATERIAL THICKNESS FOR MAXIMUM RADIUS ON ALL BENDS.
  2. ALL ANGULAR BENDS 90 DEGREES.
  3. REMOVE ALL BURRS AND SHARP EDGES.
  4. MOUNT INSERTS AFTER FINISHING.

QTY / UNIT	2	MODEL USED ON	RTTD - 4	ASS'Y NO.	SUB. ASSY
APPLICATION					
CODE					

NOTICE TO PERSONS RECEIVING THIS DRAWING  
 THE TECHNICAL MATERIEL CORPORATION claims proprietary right in the material disclosed hereon. This drawing is issued in confidence for engineering information only and may not be reproduced or used to manufacture anything shown hereon without permission from THE TECHNICAL MATERIEL CORPORATION to the user. This drawing is loaned for mutual assistance and is subject to recall at any time.

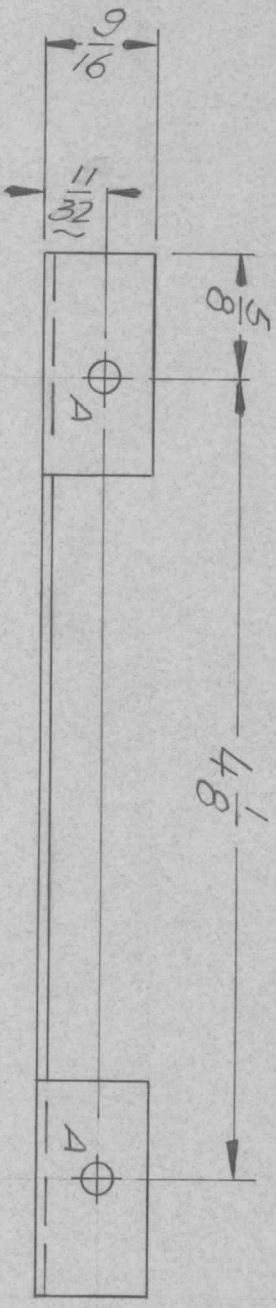
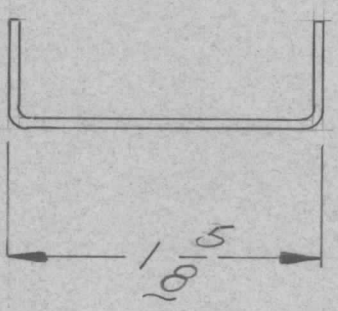
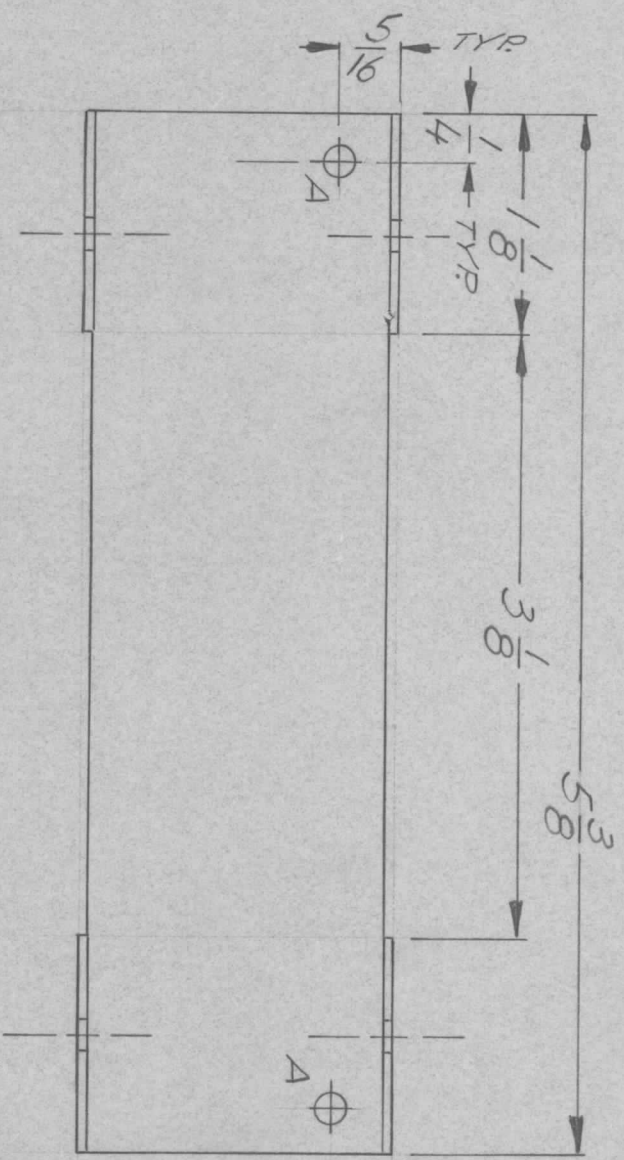
DECIMALS	X ± .05	TOLS.	FRACTIONS	1/64
	.XX ± .01		ANGLES	90° - 30°
	.XXX ± .005			
MATERIAL	.081 ALUM.			
FINISH	5404			
	YELL. IRIDITE			

REQ'D ITEM	PART NUMBER	DESCRIPTION	SYM.
4	1	NUT, ROUND, SWAGE TYPE	

FINAL APPROVAL	[Signature]	DATE	8-18-69
MECH. DES.	[Signature]	DATE	8-18-69
ELECT. DES.	[Signature]	DATE	
CHECKED	[Signature]	DATE	6/10/69
DRAWN	[Signature]	DATE	6/10/69

LIST OF MATERIAL			
THE TECHNICAL MATERIEL CORP.			
MAMARONECK, NEW YORK			
CHASSIS SUPPORT - BRKT			
SIZE	CODE IDENT. NO.	DWG. NO.	ISSUE
B	82679	MS 5491	Ø
SCALE	1:1	SHEET	OF

REVISIONS							
ZONE	LTR	DESCRIPTION	DATE	E.M.N. NO	DRAFT	CHKD	APPD
A		COMPLETELY REDRAWN	6/14/71	20385	GE	GD	GE
B		DIM. CHG. 15/8 WAS 13/8	4/26/72	20614	GE	EG	EG



OPPOSITE SIDE IDENTICAL

A — 5/32 DIA. — 6 REQ.

- UNLESS OTHERWISE SPECIFIED:
1. USE MATERIAL THICKNESS FOR MAXIMUM RADIUS ON ALL BENDS.
  2. ALL ANGULAR BENDS 90 DEGREES.
  3. REMOVE ALL BURRS AND SHARP EDGES.
  4. MOUNT INSERTS AFTER FINISHING.

QTY / UNIT	1	MODEL USED ON	HELMIK	ASS'Y NO.	AP 150
APPLICATION					
CODE					

NOTICE TO PERSONS RECEIVING THIS DRAWING  
 THE TECHNICAL MATERIEL CORPORATION claims proprietary right in the material disclosed hereon. This drawing is issued in confidence for engineering information only and may not be reproduced or used to manufacture anything shown hereon without permission from THE TECHNICAL MATERIEL CORPORATION to the user. This drawing is loaned for mutual assistance and is subject to recall at any time.

UNLESS OTHERWISE SPECIFIED DIMENSIONS ARE IN INCHES AND INCLUDE CHEMICALLY APPLIED OR PLATED FINISHES	DECIMALS	FRACTIONS
.X ± .05	TOLS.	1/64
.XX ± .01		ANGLES
.XXX ± .005		0° .30'

ALUM 5052H32  
 FINISH S401  
 YELLOW

REQ'D ITEM	PART NUMBER	DESCRIPTION	SYM.
F. BUDETTI			
LIST OF MATERIAL			

THE TECHNICAL MATERIEL CORP.  
 MAMARONECK, NEW YORK

BRACKET, FAN MOUNTING

FINAL APPROVAL	DATE	MECH. DES.	DATE
ELECT. DES.	DATE	CHECKED	DATE
DRAWN	DATE	SIZE	CODE IDENT. NO.
GE	6/14/71	B	82679
SCALE 1:1	SHEET	OF	ISSUE
			B