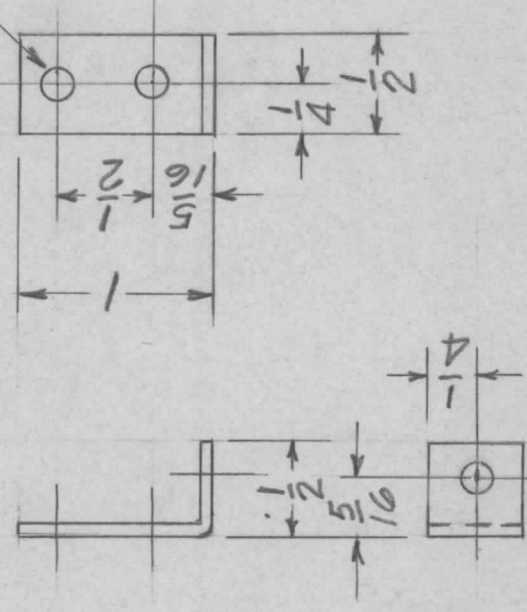


APPLICATION

REVISIONS

QTY	MODEL USED ON	ASS'Y NO.	LTR	DESCRIPTION	DATE	E.M.N.NO	DRAFT	CHKD	APPD
2	MTRM-150		Ø	ORIGINAL RELEASE	8/8/69		aj		

$\frac{11}{64}$ DIA. 3 HOLES



UNLESS OTHERWISE SPECIFIED DIMENSIONS ARE IN INCHES AND INCLUDE CHEMICALLY APPLIED OR PLATED FINISHES		REQ'D ITEM	PART NUMBER	DESCRIPTION	SYM.
DECIMALS X ± .05 .XX ± .01 .XXX ± .005		POSE		LIST OF MATERIAL	
FRACTIONS 1/64		FINAL APPROVAL		SK 3308 MS 42	
ANGLES 0°-30°		MECH. DES.		THE TECHNICAL MATERIEL CORP.	
MATERIAL 064 ALUMINUM 55052 H 32		ELECT. DES.		MAMARONECK, NEW YORK	
FINISH SA04 YEL. IRIDITE		CHECKED		BRACKET FOR TRANSF. COVER	
		DRAWN			
		DATE			
		DATE			
		DATE			
		DATE			
		DATE			

NOTICE TO PERSONS RECEIVING THIS DRAWING		SIZE	CODE IDENT. NO.	DWG NO.	ISSUE
THE TECHNICAL MATERIEL CORPORATION claims proprietary right in the material disclosed hereon. This drawing is issued in confidence for engineering information only and may not be reproduced or used to manufacture anything shown hereon without permission from THE TECHNICAL MATERIEL CORPORATION to the user. This drawing is loaned for mutual assistance and is subject to recall at any time.		A	82679	MS 5495	Ø
		SCALE		SHEET	OF