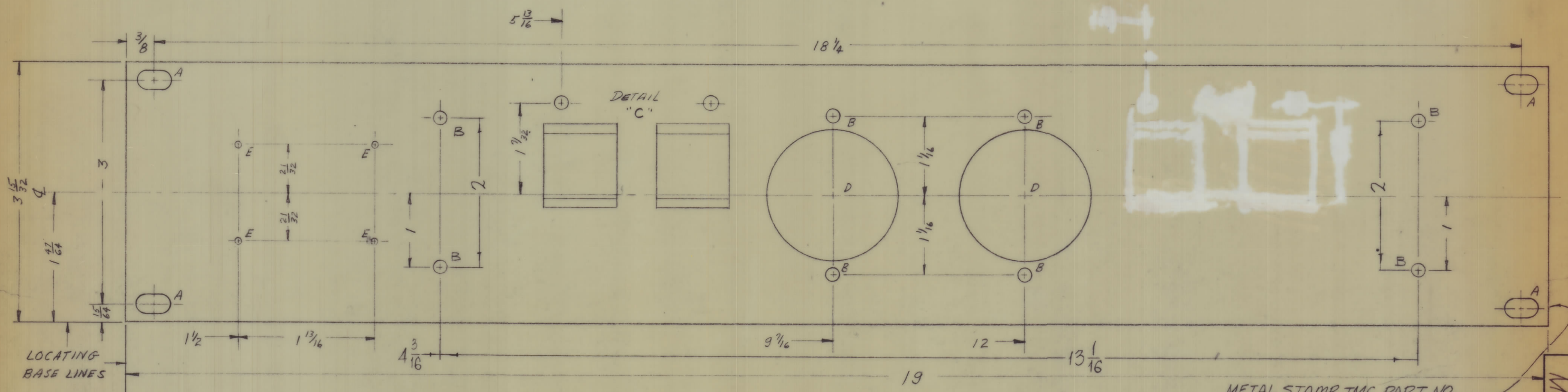


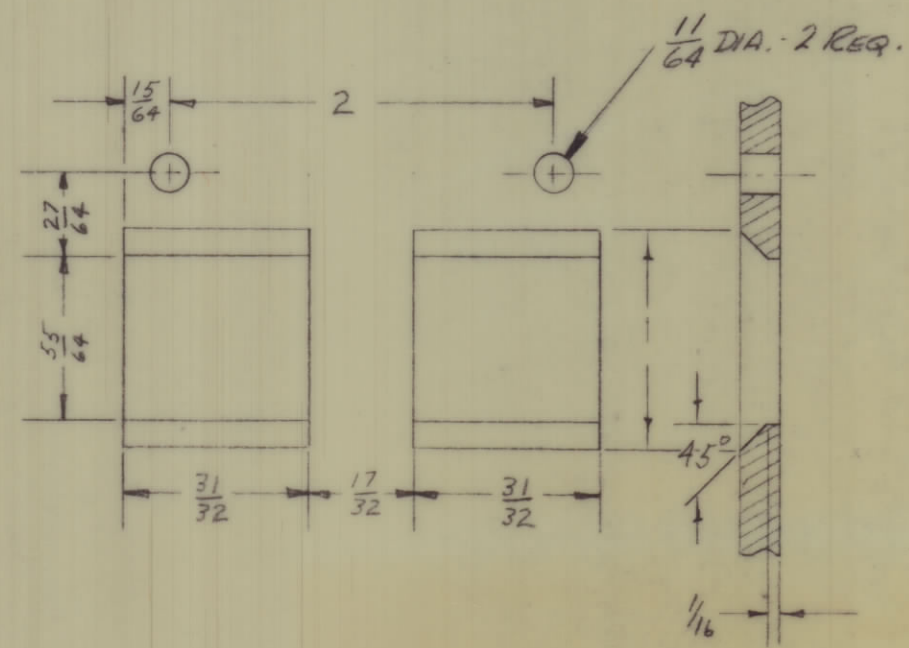
REVISIONS						
ZONE	SYM	DESCRIPTION	DATE	E.M.N. NO.	DRAFT	CHKD
	X	EXP RELEASE	5/19/69	H	GE	
	Ø	ORIGINAL RELEASE FOR PRODUCTION	5/21/69	Ø		

- A- $\frac{1}{4} \times \frac{23}{64}$ SLOT 4 REQ
- B- $\frac{11}{64}$ DIA 8 REQ
- C- SEE DETAIL 1 REQ
- D- $1\frac{3}{4}$ DIA 2 REQ
- E- .078 DIA 4 REQ



METAL STAMP TMC PART NO.
 1/8 HIGH GOTHIC W/LATEST
 REVISION LETTER ON REAR.

MS 5482



DETAIL C

FINISH NOTES:
 1. S404 - IRIDITE 14-2 AL-COAT.
 2. S114 - ZINC CHROMATE PRIMER } FRONT AND
 3. S115 - SMOOTH GRAY ENAMEL } EDGES ONLY
 OR PER CUSTOMER SPECS

MACHINING:
 1. MILL ALL EDGES.
 2. HOLES MUST BE DRILLED, UNLESS OTHERWISE SPECIFIED.
 3. LATERAL BOW OF PANEL MUST BE KEPT TO .031 TOLERANCE.
 4. PANEL MUST BE FREE OF ALL MACHINING MARKS, GOUGES AND SCRATCHES. IF NECESSARY, SAND FRONT OF PANEL WITH NO. 120 GRIT SANDPAPER.

W/LATEST REVISION LETTER.

NOTES

1	APP-17	
Q'TY./UNIT	MODEL USED ON	ASS'Y. NO.
SCALE	CODE	

REQ'D.	ITEM	PART NUMBER	DESCRIPTION	SYMBOL
LIST OF MATERIAL				
G. POSE			THE TECHNICAL MATERIEL CORP.	
MATERIAL $\frac{3}{16}$ ALUMINUM			MAMARONECK, NEW YORK	
2024-T3			TITLE	
SEE NOTES			PANEL, FRONT, UTILITY OUTLET	
UNLESS OTHERWISE SPECIFIED			DRAWN	DATE
DIMENSIONS ARE IN INCHES AND INCLUDE			GE	5/15/69
CHEMICALLY APPLIED OR PLATED FINISHES			CHECKED	DATE
DECIMALS			DATE	5/15/69
FRACTIONS			FINAL APPROVAL	
X ± .05			M	
XX ± .01			DATE	
XXX ± .005			5/21/69	
TOLERANCES			ELECT. DES.	
± 1/64			MECH. DES.	
± 0° 30'			DATE	
			21/19/69	
			SHEET	
			REV. LTR.	

MS 5482