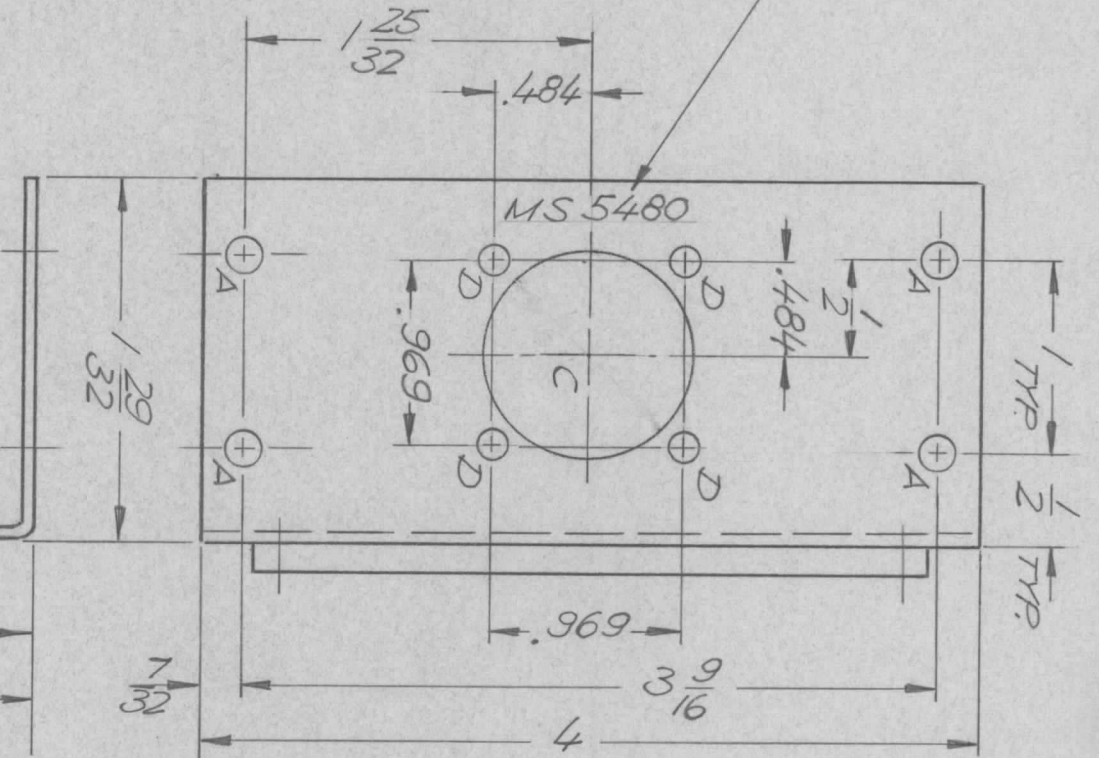


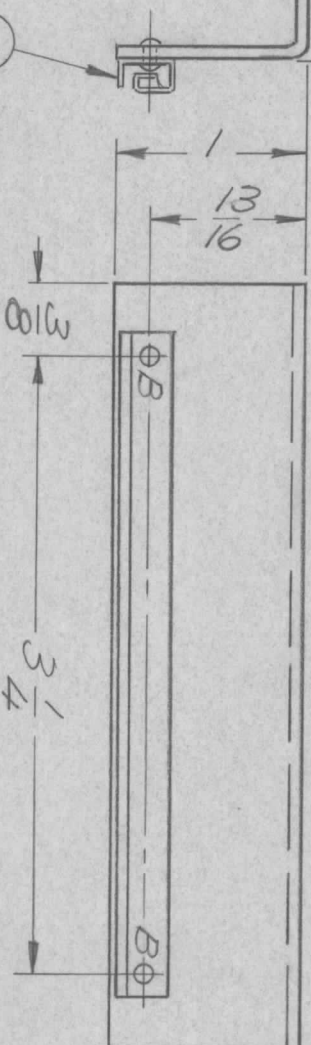
REVISIONS							
ZONE	LTR	DESCRIPTION	DATE	E.M.N. NO	DRAFT	CHKD	APPD
	X	EXP. RELEASE	5/9/69		KH		
	Ø	ORIG. RELEASE FOR PROD	9/2/69		CV		

MARK TMC P/NO
1/8 HIGH GOTHIC
WITH LATEST
REV. LETTERS



- UNLESS OTHERWISE SPECIFIED:
1. USE MATERIAL THICKNESS FOR MAXIMUM RADIUS ON ALL BENDS.
 2. ALL ANGULAR BENDS 90 DEGREES.
 3. REMOVE ALL BURRS AND SHARP EDGES.
 4. MOUNT IT. 1 & 2 AFTER FINISHING.

1 MOUNT IN
2 "B" HOLE



HOLE LEGEND:

- A ~ 11/64 DIA. (4 REQ.)
- B ~ .067 DIA. (2 REQ.)
- C ~ 1-1/16 DIA. (1 REQ.)
- D ~ 9/64 DIA. (4 REQ.)

LIST OF MATERIAL

REQ'D ITEM	PART NUMBER	DESCRIPTION	SYM.
1	CU 157-4	RETAINER, PC BOARD	B
2	EY 100-5	EYELET, FLAT FLANGE	B

THE TECHNICAL MATERIEL CORP.
MAMARONECK, NEW YORK

BRACKET, MTG. RETAINER

UNLESS OTHERWISE SPECIFIED DIMENSIONS ARE IN INCHES AND INCLUDE CHEMICALLY APPLIED OR PLATED FINISHES		FINAL APPROVAL		DATE
DECIMALS	FRACTIONS			5/9/69
X ± .05	1/64	ELECT. DES.	DATE	5/9/69
.XX ± .01	TOLS.	CHECKED	DATE	5/9/69
.XXX ± .005	ANGLES	DRAWN	DATE	5/9/69
	0° - 30°			

QTY / UNIT	MODEL USED ON	ASS'Y NO.
1	CHGM-4	BWA 256
APPLICATION		
CODE		
MATERIAL .063 ALUM.		
FINISH 5404		
YES. IRIDITE		

NOTICE TO PERSONS RECEIVING THIS DRAWING
THE TECHNICAL MATERIEL CORPORATION claims proprietary right in the material disclosed hereon. This drawing is issued in confidence for engineering information only and may not be reproduced or used to manufacture anything shown hereon without permission from THE TECHNICAL MATERIEL CORPORATION to the user. This drawing is loaned for mutual assistance and is subject to recall at any time.

CUT HERE GUARANTEED 4-68