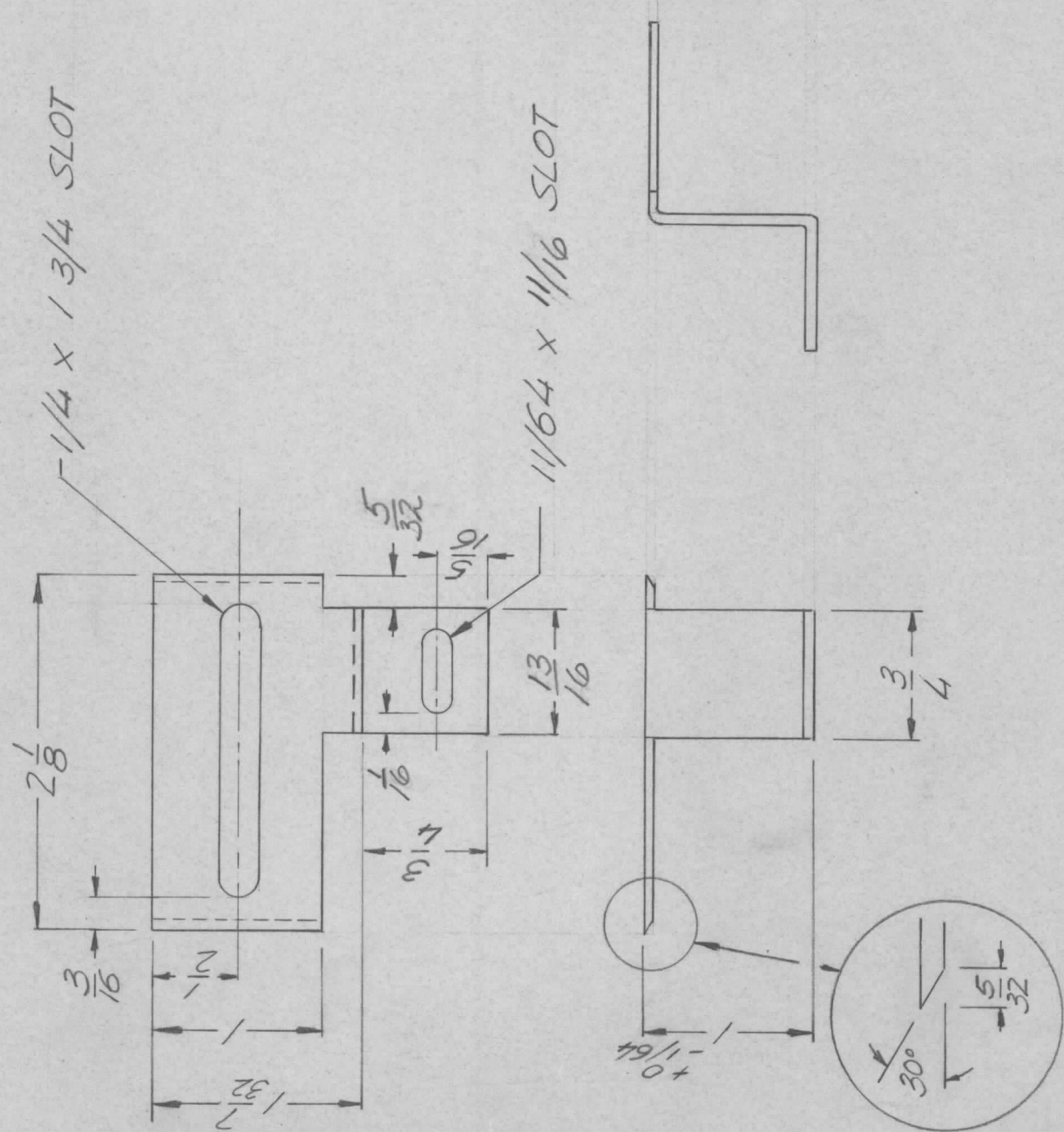


APPLICATION		REVISIONS							
QTY	MODEL USED ON	ASS'Y NO.	LTR	DESCRIPTION	DATE	E.M.N.NO	DRAFT	CHKD	APPD
1	4FR-4	BMA-298	B	REDRAWN & REVISED	11/1/70	20088	GE	TC	GE



UNLESS OTHERWISE SPECIFIED DIMENSIONS ARE IN INCHES AND INCLUDE CHEMICALLY APPLIED OR PLATED FINISHES	REQ'D ITEM	PART NUMBER	DESCRIPTION	SYM.
DECIMALS X ± .05 .XX ± .01 .XXX ± .005	POSE		LIST OF MATERIAL	
FRACTIONS 1/64 ANGLES 0°-30°	FINAL APPROVAL <i>[Signature]</i>		THE TECHNICAL MATERIEL CORP. MAMARONECK, NEW YORK	
MATERIAL: 081 ALLUM 5052 H32	MECH. DES. <i>[Signature]</i>		SWITCH ACTUATOR	
FINISH: S404 YEL. IRIDITE	ELECT. DES.			
	CHECKED G.E.H.			
	DRAWN GE			
	DATE 11/3/70			
	DATE 11/3/70			
	DATE 11/4/70			
	DATE 11/3/70			

SIZE	CODE IDENT. NO.	DWG NO.	ISSUE
A	82679	MS 5461	B
SCALE	SHEET	OF	

NOTICE TO PERSONS RECEIVING THIS DRAWING  
 THE TECHNICAL MATERIEL CORPORATION claims proprietary right in the material disclosed hereon. This drawing is issued in confidence for engineering information only and may not be reproduced or used to manufacture anything shown hereon without permission from THE TECHNICAL MATERIEL CORPORATION to the user. This drawing is loaned for mutual assistance and is subject to recall at any time.