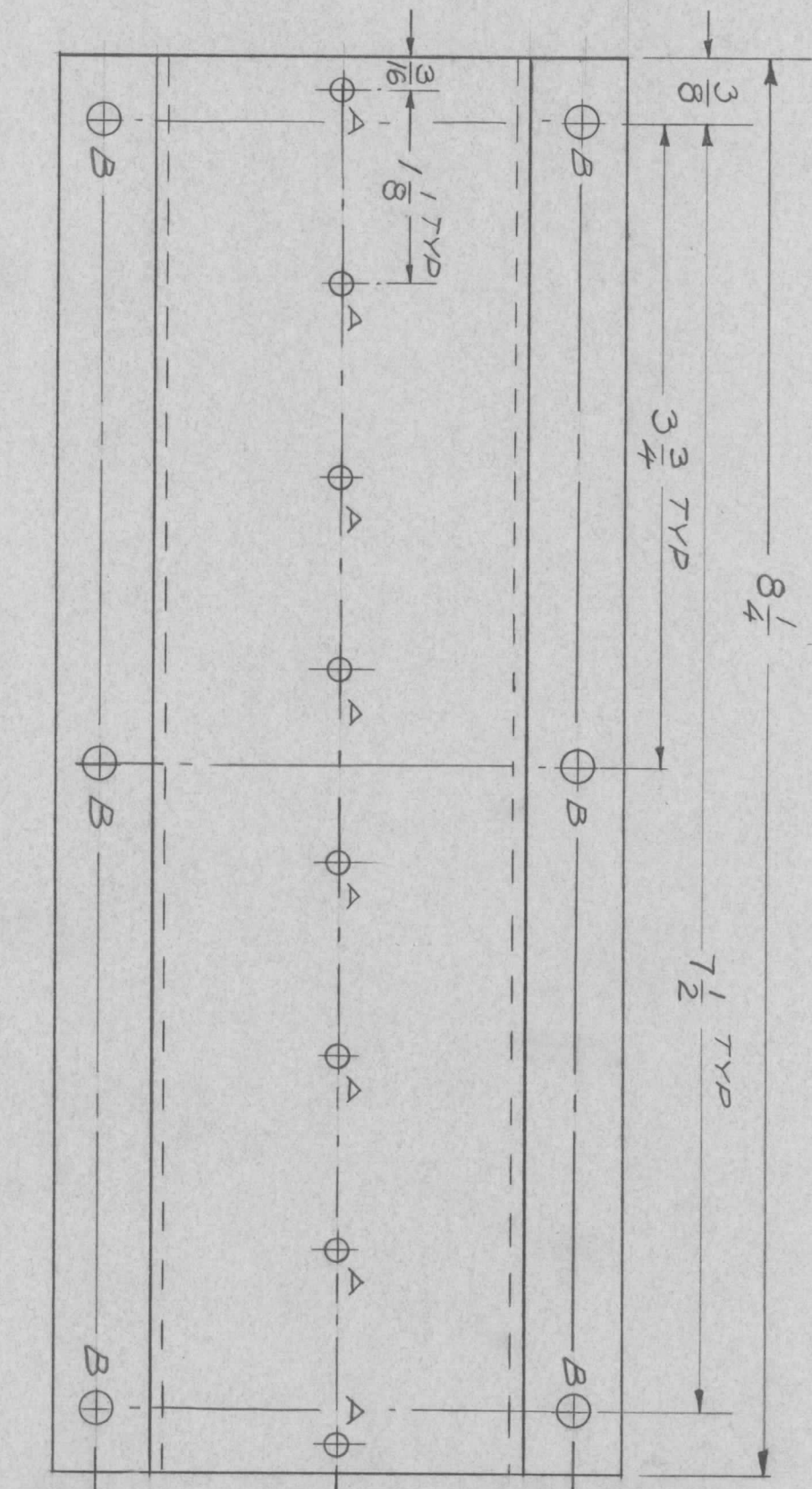


REVISIONS							
ZONE	LTR	DESCRIPTION	DATE	E.M.N.NO	DRAFT	CHKD	APPD
	X	EXP RELEASE	22769		GE		
	Ø	ORIG. RELEASE FOR PROD.	22869		RG		



② MOUNT IT 1 WITH IT 2
IN A HOLES AFTER
① FINISHING

REQ'D ITEM	PART NUMBER	DESCRIPTION	SYM.
8	EY100-1	EYELET	
2	FPI60K8.250N	CONTACT ELECTRIC	

UNLESS OTHERWISE SPECIFIED DIMENSIONS ARE IN INCHES AND INCLUDE CHEMICALLY APPLIED OR PLATED FINISHES	
DECIMALS	FRACTIONS
.X ± .05	1/64
.XX ± .01	TOLS. ANGLES
.XXX ± .005	0° 30'

QTY / UNIT	MODEL USED ON	ASS'Y NO.
2	HFRR-4	BMA-291
APPLICATION		
CODE		

SYM	HOLE SIZE	REQ
A	1/8	8
B	11/64	6

NOTICE TO PERSONS RECEIVING THIS DRAWING
THE TECHNICAL MATERIEL CORPORATION claims proprietary right in the material disclosed hereon. This drawing is issued in confidence for engineering information only and may not be reproduced or used to manufacture anything shown hereon without permission from THE TECHNICAL MATERIEL CORPORATION to the user. This drawing is loaned for mutual assistance and is subject to recall at any time.

FINAL APPROVAL	DATE
<i>[Signature]</i>	2/28/69
MECH. DES.	DATE
<i>[Signature]</i>	2/28/69
ELECT. DES.	DATE
<i>[Signature]</i>	2/28/69
CHECKED	DATE
<i>[Signature]</i>	2/28/69
DRAWN	DATE
<i>[Signature]</i>	2/27/69

LIST OF MATERIAL			
THE TECHNICAL MATERIEL CORP.			
MAMARONECK, NEW YORK			
BRACKET, GROUNDING TUNER			
SIZE	CODE IDENT. NO.	DWG NO.	ISSUE
B	82679	MS 5450	Ø
SCALE	1:1	SHEET	OF