

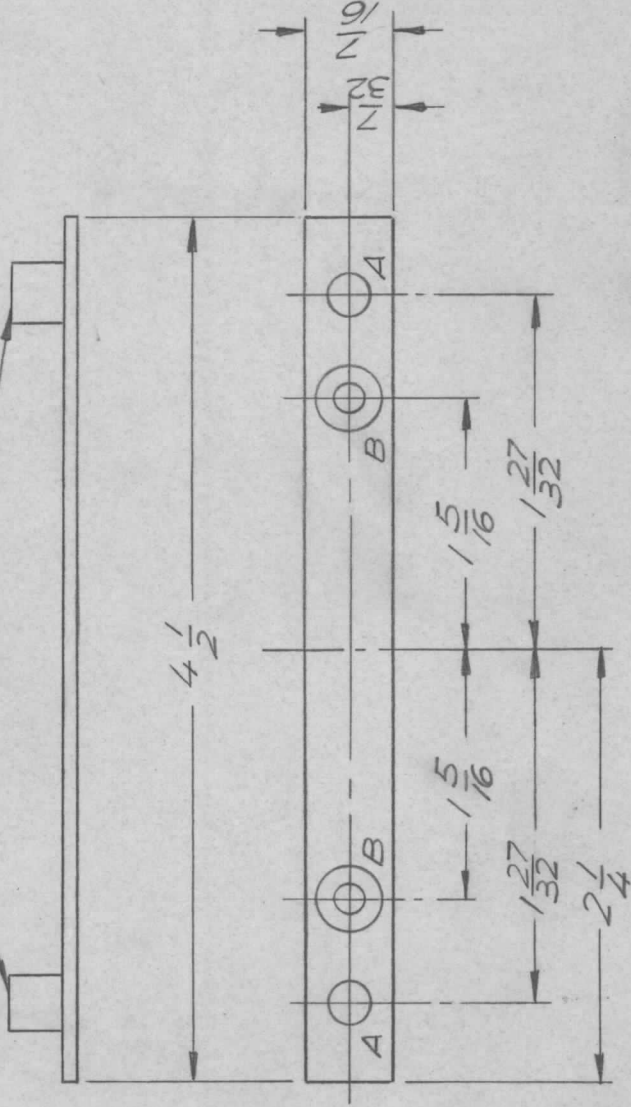
APPLICATION

QTY	MODEL USED ON	ASS'Y NO.	LTR
2	AX5052		X

REVISIONS

DESCRIPTION	DATE	E.M.N.NO	DRAFT	CHKD	APPD
EXP. RELEASE	11/14/68		K.H.	J.D.	
DWG NO WAS MS5433 (ERRATA)	1/17/69	X1	J.D.	J.D.	
ORIG. RELEASE FOR PROD	1-17-69	Ø	R.G.		

1  
MOUNT AFTER FINISHING



HOLES:

A ~ #12 DRILL (2 REQ.)

B ~ .169 DIA & 82° C' SINK TO .337 DIA. FOR B-32 (2 REQ.)

REQ'D ITEM	PART NUMBER	DESCRIPTION	SYM.
2	1	TE-108-1BM MULT, CLINCH	
LIST OF MATERIAL			
THE TECHNICAL MATERIEL CORP. MAMARONECK, NEW YORK			
STRAP, MOUNTING			

UNLESS OTHERWISE SPECIFIED DIMENSIONS ARE IN INCHES AND INCLUDE CHEMICALLY APPLIED OR PLATED FINISHES
DECIMALS
.X ± .05
.XX ± .01
.XXX ± .005
FRACTIONS
1/64
TOLS.
ANGLES
0°-30'
MATERIAL .064-
ALUM. 5052-H32
FINISH S404
YELLOW IRIDITE

FINAL APPROVAL	DATE
<i>[Signature]</i>	1-17-69
MECH. DES.	DATE
<i>[Signature]</i>	1-8-69
ELECT. DES.	DATE
<i>[Signature]</i>	1-17-69
CHECKED	DATE
<i>[Signature]</i>	1-8-69
DRAWN	DATE
<i>[Signature]</i>	11/14/68

NOTICE TO PERSONS RECEIVING THIS DRAWING  
 THE TECHNICAL MATERIEL CORPORATION claims proprietary right in the material disclosed hereon. This drawing is issued in confidence for engineering information only and may not be reproduced or used to manufacture anything shown hereon without permission from THE TECHNICAL MATERIEL CORPORATION to the user. This drawing is loaned for mutual assistance and is subject to recall at any time.

SIZE	CODE IDENT. NO.	DWG NO.	ISSUE
A	82679	MS5448	Ø
SCALE		SHEET	OF