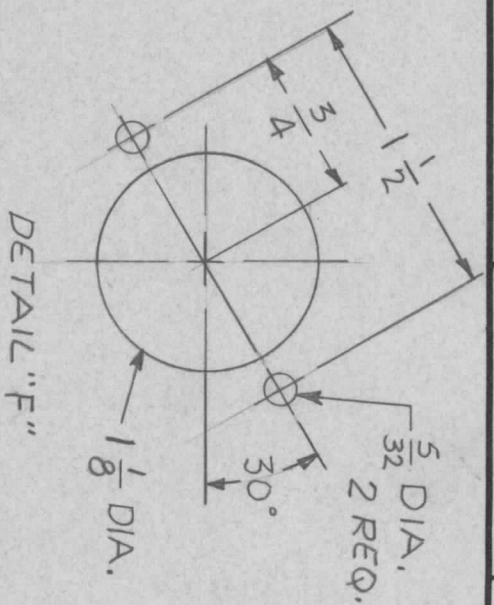
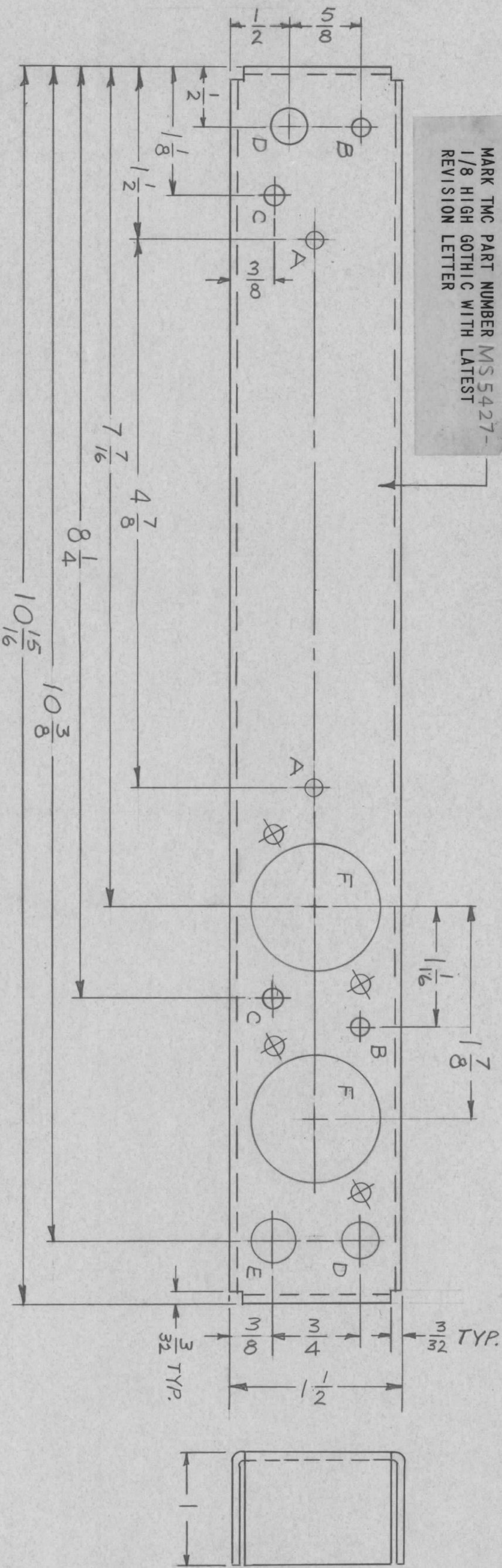


HOLE	DESCRIPTION	REQ
A	9/64 DIA.	2
B	5/32 DIA.	2
C	11/64 DIA.	2
D	5/16 DIA.	2
E	3/8 DIA.	1
F	SEE DETAIL	2

MARK TMC PART NUMBER MS 5427-
1/8 HIGH GOTHIC WITH LATEST
REVISION LETTER



REVISIONS							
ZONE	LTR	DESCRIPTION	DATE	E.M.N. NO	DRAFT	CHKD	APPD
X		EXP. RELEASE	9-25-68				
Ø		ORIG. RELEASE FOR PROD.	12-10-68				

UNLESS OTHERWISE SPECIFIED:

- USE MATERIAL THICKNESS FOR MAXIMUM RADIUS ON ALL BENDS.
- ALL ANGULAR BENDS 90 DEGREES.
- REMOVE ALL BURRS AND SHARP EDGES.

QTY / UNIT	1	MODEL USED ON	KIT 357	ASSY NO.	
APPLICATION		CODE	S401-451		

NOTICE TO PERSONS RECEIVING THIS DRAWING
THE TECHNICAL MATERIEL CORPORATION claims proprietary right in the material disclosed herein. This drawing is issued in confidence for engineering information only and may not be reproduced or used to manufacture anything shown herein without permission from THE TECHNICAL MATERIEL CORPORATION to the user. This drawing is loaned for mutual assistance and is subject to recall at any time.

DECIMALS	X ± .05	TOLS.	1/64
	.XX ± .01	ANGLES	0° - 30'
	.XXX ± .005	FRACTIONS	1/64
MATERIAL .063 THICK			
ALUMINUM 5052-H32			
FINISH S404 YEL IRIDITE			

REF: LD2333

REQ'D ITEM	PART NUMBER	DESCRIPTION	SYM.
POSE		LIST OF MATERIAL SKHFS MS1	

FINAL APPROVAL	DATE	MECH. DES.	DATE	ELECT. DES.	DATE
<i>POSE</i>	12/4/68	<i>Mac</i>	12/4/68		
CHECKED	DATE	DRAWN	DATE		
<i>Mac</i>	10/11/68	<i>Mac</i>	9-25-68		

THE TECHNICAL MATERIEL CORP.	MAMARONECK, NEW YORK		
CHASSIS, MAIN	250KHZ DIVIDER		
SIZE	CODE IDENT. NO.	DWG NO.	ISSUE
B	82679	MS5427	Ø
SCALE		SHEET	OF