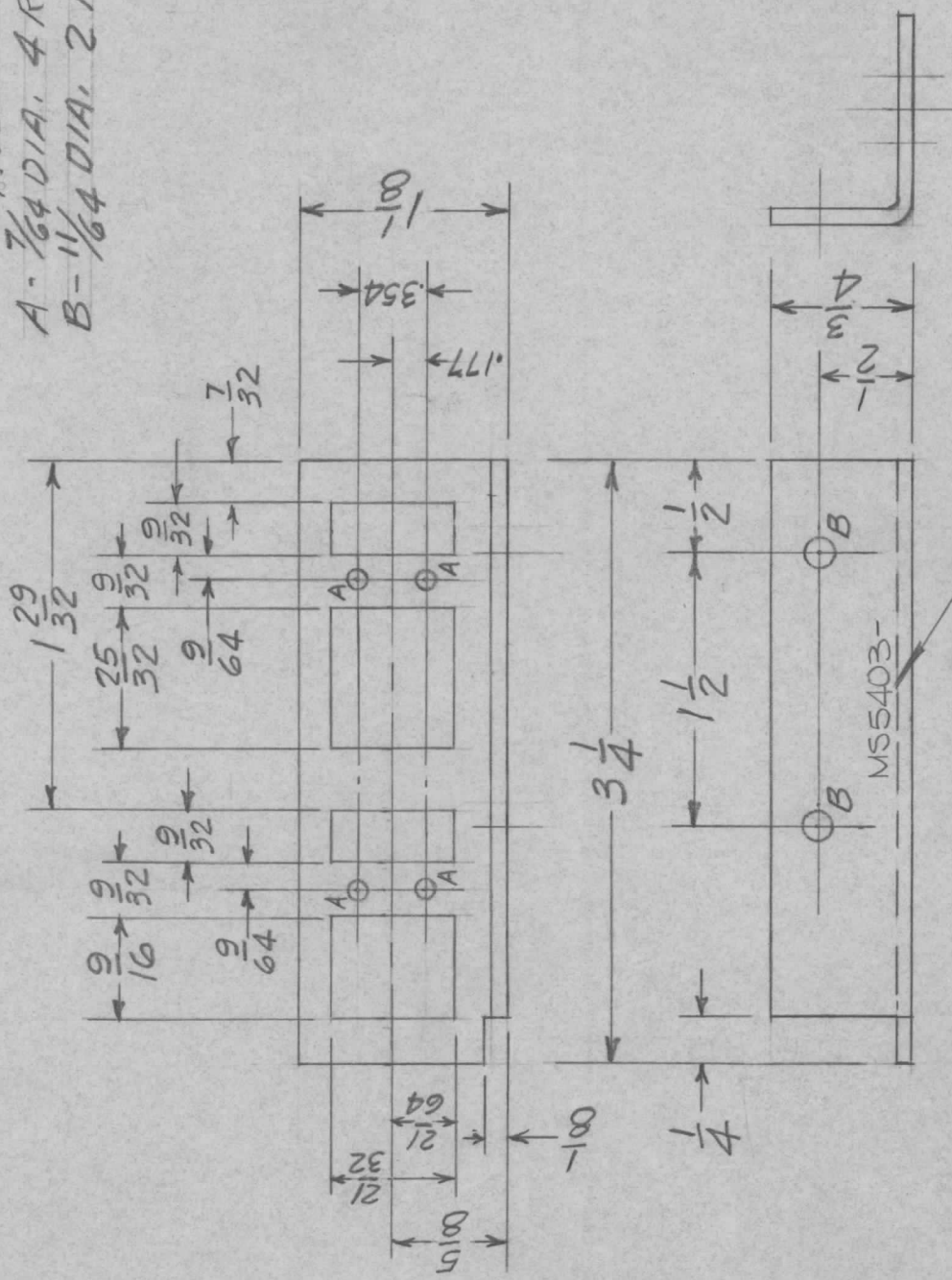


APPLICATION

REVISIONS

QTY	MODEL USED ON	ASSY NO.	LTR	DESCRIPTION	DATE	E.M.N.NO	DRAFT	CHKD	APPD
1	MMX-1M		Ø	ORIG. RELEASE FOR PROD.	6-14-68	Ø	R.G.	WV	HUB

HOLES
 A - 7/64 DIA. 4 REQ
 B - 1/64 DIA. 2 REQ



UNLESS OTHERWISE SPECIFIED:

1. USE MATERIAL THICKNESS FOR MAXIMUM RADIUS ON ALL BENDS
2. ALL ANGULAR BENDS 90 DEGREES
3. REMOVE ALL BURRS AND SHARP EDGES

MARK TMC PART NUMBER
 1/8 HIGH GOTHIC WITH LATEST
 REVISION LETTER

UNLESS OTHERWISE SPECIFIED DIMENSIONS ARE IN INCHES AND INCLUDE CHEMICALLY APPLIED OR PLATED FINISHES		REQ'D ITEM	PART NUMBER	DESCRIPTION	SYM.
DECIMALS X ± .05 TOLS. 1/64 .XX ± .01 ANGLES 0° - 30' .XXX ± .005		O. POSE		LIST OF MATERIAL SK3246 MS 18C	
MATERIAL .081 ALUM. 5052 H32		FINAL APPROVAL	DATE	THE TECHNICAL MATERIEL CORP. MAMARONECK, NEW YORK	
FINISH 5404 YEL. IRIDITE		MECH. DES.	DATE 6-10-68		
S401-451		ELECT. DES.	DATE 6-14-68		
		CHECKED	DATE 6-18-68		
		DRAWN	DATE 6-10-68		
			D.A.C.	BRACKET, MTG., RELAY	

NOTICE TO PERSONS RECEIVING THIS DRAWING
 THE TECHNICAL MATERIEL CORPORATION claims proprietary right in the material disclosed hereon. This drawing is issued in confidence for engineering information only and may not be reproduced or used to manufacture anything shown hereon without permission from THE TECHNICAL MATERIEL CORPORATION to the user. This drawing is loaned for mutual assistance and is subject to recall at any time.

SIZE	CODE IDENT. NO.	DWG NO.	ISSUE
A	82679	MS5403	Ø
SCALE	1:1	SHEET	OF