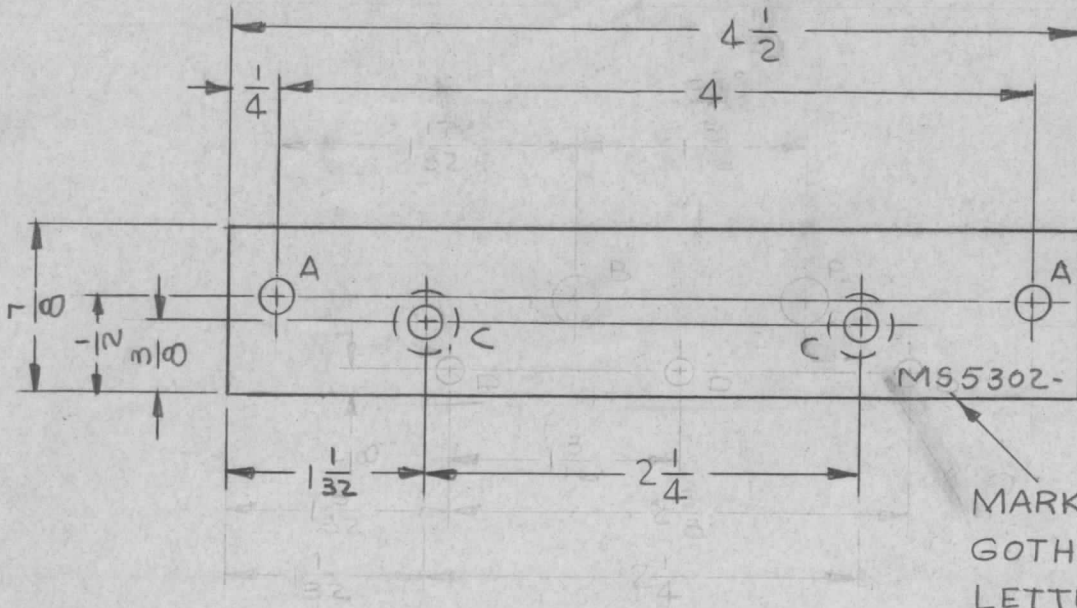


APPLICATION			REVISIONS						
QTY	MODEL USED ON	ASS'Y NO.	LTR	DESCRIPTION	DATE	E.M.N.NO	DRAFT	CHKD	APPD
IEA	HFRR-4		X	EXP. RELEASE	5.24.67		JL		
			Ø	ORIG. RELEASE FOR PROD.	11.6.68	Ø	R.G.		



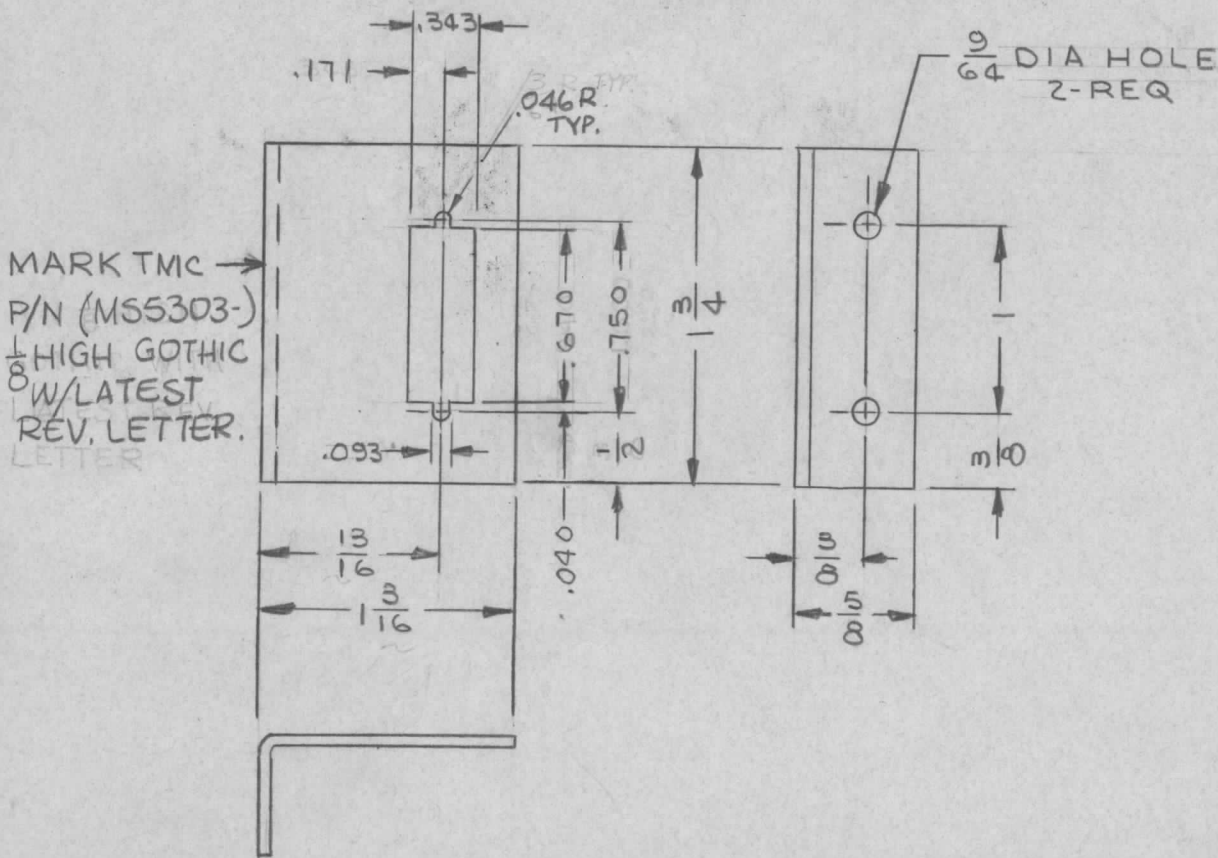
TMC P/N	DESCRIPTION
MS5302-1	AS SHOWN
MS5302-2	OPPOSITE HAND

HOLE LEGEND		
HOLE	DESCRIPTION	REQ
A	11/64 DIA	2
B	DELETED	2
C	.169 DIA & C'S SINK 82° TO .337 DIA (FAR SIDE)	2
D	DELETED	3

UNLESS OTHERWISE SPECIFIED DIMENSIONS ARE IN INCHES AND INCLUDE CHEMICALLY APPLIED OR PLATED FINISHES		REQ'D	ITEM	PART NUMBER	DESCRIPTION	SYM.
DECIMALS: .X ± .05, .XX ± .01, .XXX ± .005; FRACTIONS: 1/64, ANGLES: 0°-30'		HOGAN (ZETENA) LIST OF MATERIAL SK 3252-003-21				
MATERIAL 1/8 THICK ALUMINUM 5052-H32		MECH. DES.	JL	DATE	THE TECHNICAL MATERIEL CORP. MAMARONECK, NEW YORK	
FINISH S404 YEL IRIDITE		ELECT. DES.		DATE	BRACKET, MTG TRANSFORMER	
S 401-451		CHECKED	SG	DATE		
		DRAWN	JL	DATE		

NOTICE TO PERSONS RECEIVING THIS DRAWING THE TECHNICAL MATERIEL CORPORATION claims proprietary right in the material disclosed hereon. This drawing is issued in confidence for engineering information only and may not be reproduced or used to manufacture anything shown hereon without permission from THE TECHNICAL MATERIEL CORPORATION to the user. This drawing is loaned for mutual assistance and is subject to recall at any time.				SIZE	CODE IDENT. NO.	DWG NO.	ISSUE
				A	82679	MS 5302	Ø
				SCALE 1:1	SHEET		OF

APPLICATION			REVISIONS							
QTY	MODEL USED ON	ASS'Y NO.	LTR	DESCRIPTION	DATE	E.M.N.NO	DRAFT	CHKD	APPD	
1	HFR R-4		X	EXP. RELEASE	5.26.67		JL			
			Ø	ORIG. RELEASE FOR PROD.	11-6-68	Ø	R.G.			



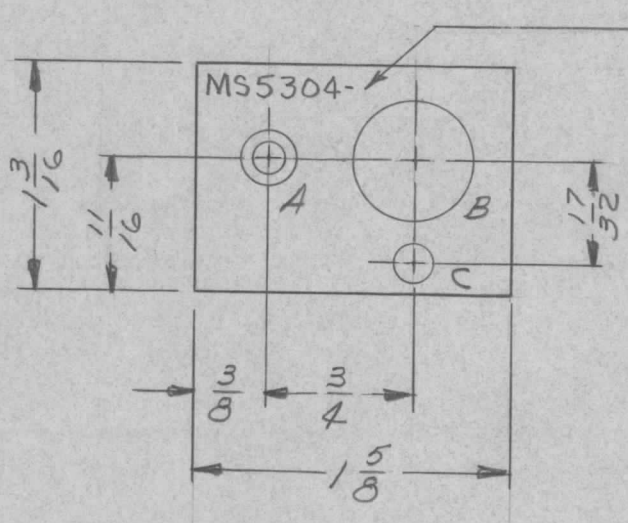
UNLESS OTHERWISE SPECIFIED:

1. USE MATERIAL THICKNESS FOR MAXIMUM RADIUS ON ALL BENDS
2. ALL ANGULAR BENDS 90 DEGREES
3. REMOVE ALL BURRS AND SHARP EDGES

REF:LD2278

UNLESS OTHERWISE SPECIFIED DIMENSIONS ARE IN INCHES AND INCLUDE CHEMICALLY APPLIED OR PLATED FINISHES		REQ'D	ITEM	PART NUMBER	DESCRIPTION	SYM.
DECIMALS .X ± .05 .XX ± .01 .XXX ± .005	FRACTIONS TOLS. 1/64 ANGLES 0° .30'			HOGAN (ZETENA)	LIST OF MATERIAL SK 3252-003-20	
MATERIAL .081 THICK ALUMINUM 5052-H32		FINAL APPROVAL	JL	DATE	11/6/68	
FINISH S404 YEL IRIDITE		MECH. DES.	JL	DATE	5/26/67	
S401-451		ELECT. DES.		DATE		
		CHECKED	SG	DATE	5/26/67	
		DRAWN	JL	DATE	5/26/67	
<p>NOTICE TO PERSONS RECEIVING THIS DRAWING</p> <p>THE TECHNICAL MATERIEL CORPORATION claims proprietary right in the material disclosed hereon. This drawing is issued in confidence for engineering information only and may not be reproduced or used to manufacture anything shown hereon without permission from THE TECHNICAL MATERIEL CORPORATION to the user. This drawing is loaned for mutual assistance and is subject to recall at any time.</p>					SIZE	ISSUE
					A	Ø
					82679	MS5303
					SCALE	SHEET OF

APPLICATION			REVISIONS						
QTY	MODEL USED ON	ASS'Y NO.	LTR	DESCRIPTION	DATE	E.M.N.NO	DRAFT	CHKD	APPD
1	HFRR-4		X	EXP. RELEASE	11-21-67		JL	<i>[Signature]</i>	<i>[Signature]</i>
			Ø	ORIG. RELEASE FOR PROD.	11-6-68	Ø	R.G.		<i>[Signature]</i>

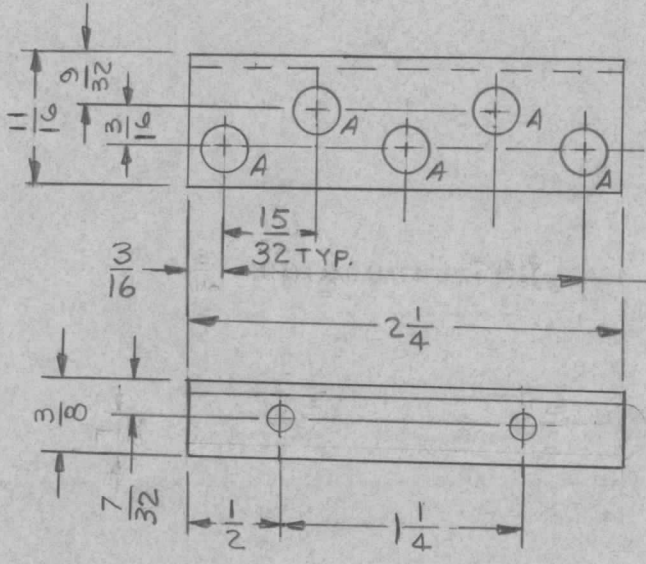


MARK TMC P/N $\frac{1}{8}$ HIGH GOTHIC
W/LATEST REV. LETTER

HOLE LEGEND		
HOLE	DESCRIPTION	REQ
A	.144 DIA & C/SINK 82° TO .284 DIA	1
B	5/8 DIA	1
C	3/16 DIA	1

<small>UNLESS OTHERWISE SPECIFIED DIMENSIONS ARE IN INCHES AND INCLUDE CHEMICALLY APPLIED OR PLATED FINISHES</small> <small>DECIMALS: .X ± .05, .XX ± .01, .XXX ± .005</small> <small>FRACTIONS: 1/64, ANGLES: 0°-30'</small> MATERIAL .063 THICK ALUMINUM 5052-H32 FINISH YEL IRIDITE 5404 S401-451	REQ'D	ITEM	PART NUMBER	DESCRIPTION	SYM.		
			HOGAN (ZETENA)	LIST OF MATERIAL SK 3252-003-16			
		FINAL APPROVAL	<i>[Signature]</i>	DATE	11/6/68	THE TECHNICAL MATERIEL CORP. MAMARONECK, NEW YORK MTG, BRACKET-CABLE CLAMP	
		MECH. DES.	M. ZETENA	DATE			
		ELECT. DES.		DATE			
	CHECKED	SGI	DATE	11/21/67			
	DRAWN	JL	DATE	11/21/67			
<small>NOTICE TO PERSONS RECEIVING THIS DRAWING</small> <small>THE TECHNICAL MATERIEL CORPORATION claims proprietary right in the material disclosed hereon. This drawing is issued in confidence for engineering information only and may not be reproduced or used to manufacture anything shown hereon without permission from THE TECHNICAL MATERIEL CORPORATION to the user. This drawing is loaned for mutual assistance and is subject to recall at any time.</small>				SIZE	CODE IDENT. NO.	DWG NO.	ISSUE
				A	82679	MS5304	Ø
				SCALE	1:1	SHEET	OF

APPLICATION			REVISIONS							
QTY	MODEL USED ON	ASS'Y NO.	LTR	DESCRIPTION	DATE	E.M.N.NO	DRAFT	CHKD	APPD	
1	HFR-4		X1	"B" HOLES WERE 7/64 DIA	12/12/67		JL			
			Ø	ORIG. RELEASE FOR PROD.	11-6-68	Ø	R.G.			



MARK TMC P/N
(MSS305-) 1/8 HIGH
GOTHIC W/LATEST REV.
LETTER.

(4) EQUAL CENTERS EACH 15/32 = 1-7/8

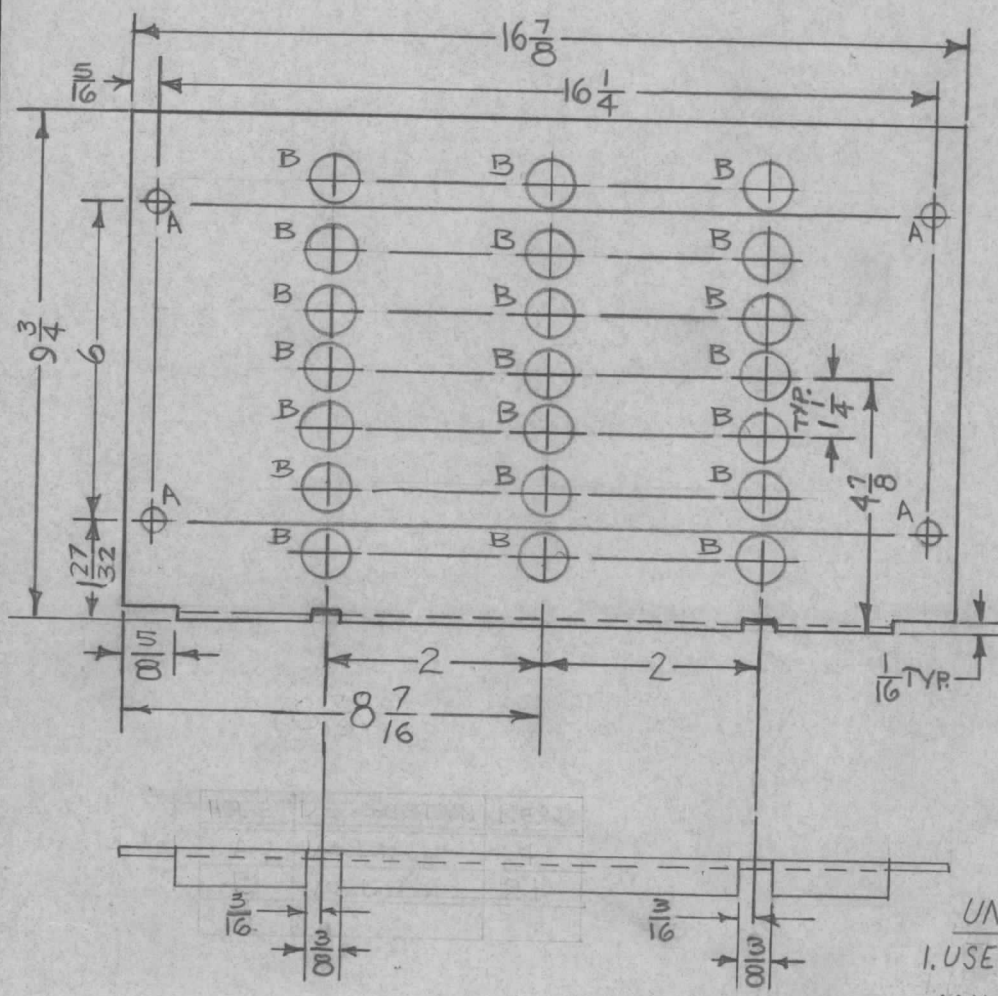
HOLE	DESCRIPTION	REQ
A	7/64 DIA	5
B	.125 DIA	2

UNLESS OTHERWISE SPECIFIED:

1. USE MATERIAL THICKNESS FOR MAXIMUM RADIUS ON ALL BENDS
2. ALL ANGULAR BENDS 90 DEGREES
3. REMOVE ALL BURRS AND SHARP EDGES

UNLESS OTHERWISE SPECIFIED DIMENSIONS ARE IN INCHES AND INCLUDE CHEMICALLY APPLIED OR PLATED FINISHES DECIMALS: .X ± .05, .XX ± .01, .XXX ± .005 FRACTIONS: 1/64, ANGLES: 0° -30' MATERIAL .063 THICK ALUMINUM 5052-H32 FINISH S404 YEL IRIDITE S401-451	REQ'D	ITEM	PART NUMBER	DESCRIPTION	SYM.		
			HOGAN (ZETENA)	LIST OF MATERIAL SK 3252-003-48			
	FINAL APPROVAL	DATE	THE TECHNICAL MATERIEL CORP. MAMARONECK, NEW YORK MTG, BKT, CONNECTOR-OSCILLATOR				
	MECH. DES.	DATE					
ELECT. DES.	DATE						
CHECKED	DATE						
DRAWN	DATE						
NOTICE TO PERSONS RECEIVING THIS DRAWING THE TECHNICAL MATERIEL CORPORATION claims proprietary right in the material disclosed hereon. This drawing is issued in confidence for engineering information only and may not be reproduced or used to manufacture anything shown hereon without permission from THE TECHNICAL MATERIEL CORPORATION to the user. This drawing is loaned for mutual assistance and is subject to recall at any time.				SIZE	CODE IDENT. NO.	DWG NO.	ISSUE
				A	82679	MS5305	Ø
				SCALE	1:1	SHEET	OF

APPLICATION			REVISIONS							
QTY	MODEL USED ON	ASS'Y NO.	LTR	DESCRIPTION	DATE	E.M.N.NO	DRAFT	CHKD	APPD	
1	SWCD-3K		X1	3/8" WAS 5/16	1-30-68		A.P.		A.P.	
			Ø	ORIGINAL RELEASE FOR PRODUCTION	5/7/68	Ø	H.S.			



① TO BE SUPPLIED AND ASSEMBLED BY TMC.
②

HOLE	DESCRIPTION	REQ.
A	1/4 DIA.	4
B	1/2 DIA.	21

MARK TMC F/N
(MS 5312) 1/8" HIGH
1/4" GOTHIC W/LATEST
REV. LETTER

- UNLESS OTHERWISE SPECIFIED:
1. USE MATERIAL THICKNESS FOR MAXIMUM RADIUS ON ALL BENDS
 2. ALL ANGULAR BENDS 90 DEGREES
 3. REMOVE ALL BURRS & SHARP EDGES
 4. MOUNT INSERTS AFTER FINISHING

REQ'D	ITEM	PART NUMBER	DESCRIPTION	SYM.
4	2	FS109-3	RING, RETAINING	A
4	1	FS110-1	STUD, TURNLOCK	A

BUDETTI

FINAL APPROVAL	DATE
<i>[Signature]</i>	12-19-67
MECH. DES.	DATE
A. PETROCCA	12-19-67
ELECT. DES.	DATE
<i>[Signature]</i>	5-7-68
CHECKED	DATE
<i>[Signature]</i>	5-7-68
DRAWN	DATE
ALPETROCCA	12-19-67

LIST OF MATERIAL

THE TECHNICAL MATERIEL CORP.
MAMARONECK, NEW YORK

COVER, TOP

UNLESS OTHERWISE SPECIFIED DIMENSIONS ARE IN INCHES AND INCLUDE CHEMICALLY APPLIED OR PLATED FINISHES

DECIMALS	FRACTIONS
.X ± .05	1/64
.XX ± .01	ANGLES
.XXX ± .005	0° - 30'

MATERIAL .051 THK ALUMINUM 5052-H32

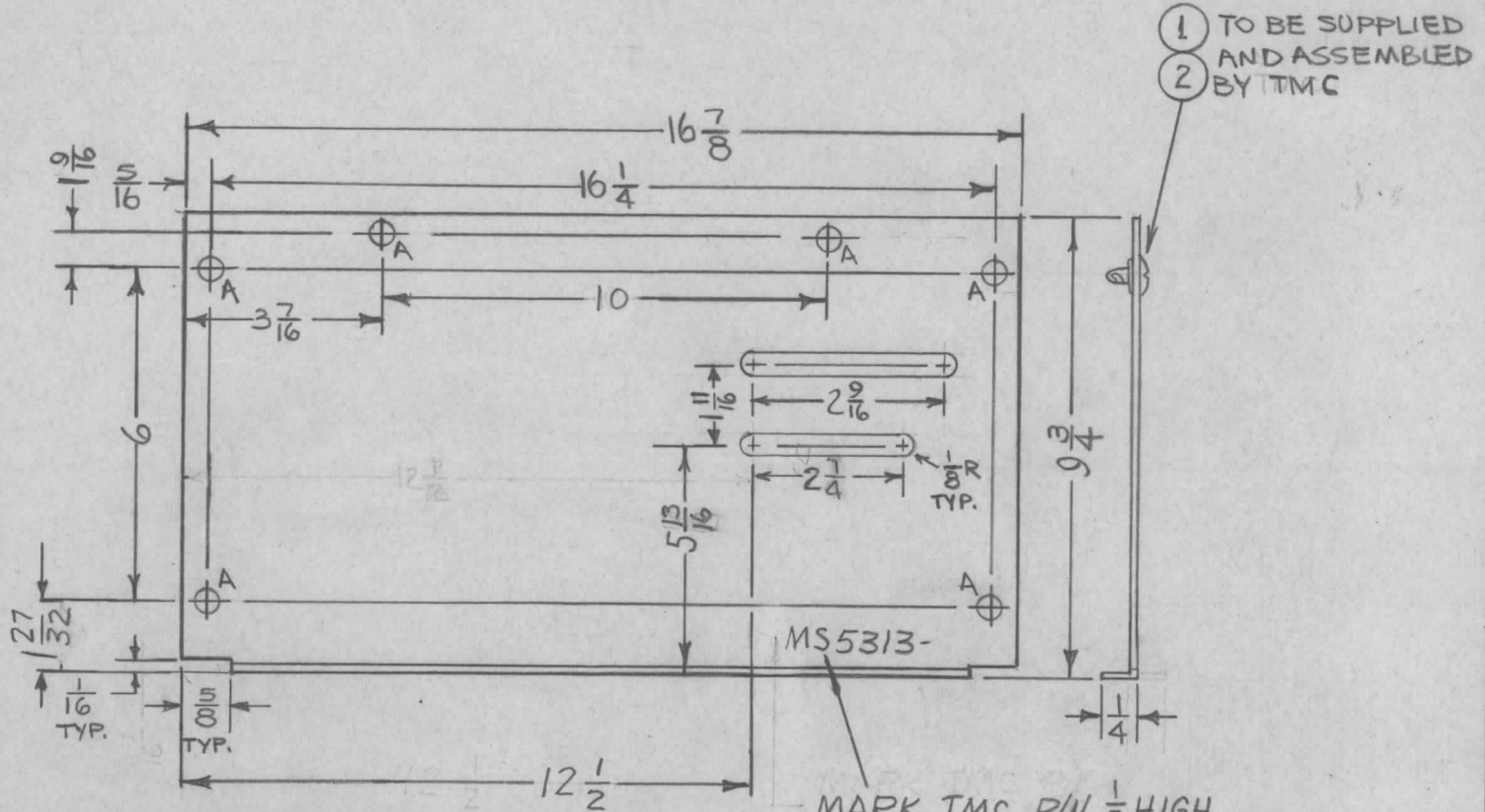
FINISH S404 YEL. IRIDITE

S401-451

NOTICE TO PERSONS RECEIVING THIS DRAWING
THE TECHNICAL MATERIEL CORPORATION claims proprietary right in the material disclosed hereon. This drawing is issued in confidence for engineering information only and may not be reproduced or used to manufacture anything shown hereon without permission from THE TECHNICAL MATERIEL CORPORATION to the user. This drawing is loaned for mutual assistance and is subject to recall at any time.

SIZE	CODE IDENT. NO.	DWG NO.	ISSUE
A	82679	MS 5312	Ø
SCALE	DO NOT SCALE	SHEET	OF

APPLICATION			REVISIONS							
QTY	MODEL USED ON	ASS'Y NO.	LTR	DESCRIPTION	DATE	E.M.N.NO	DRAFT	CHKD	APPD	
1	SWCD-3K		X	EXP. RELEASE	12.19.67		A.P.	<i>[Signature]</i>	A.P.	
			Ø	ORIGINAL RELEASE FOR PRODUCTION	5.7.68	Ø	<i>[Signature]</i>	<i>[Signature]</i>		



- UNLESS OTHERWISE SPECIFIED:
1. USE MATERIAL THICKNESS FOR MAXIMUM RADIUS ON ALL BENDS.
 2. ALL ANGULAR BENDS 90 DEGREES.
 3. REMOVE ALL BURRS & SHARP EDGES.
 4. MOUNT INSERTS AFTER FINISHING.

MARK TMC P/N 1/8 HIGH GOTHIC W/LATEST REV. LETTER

HOLE	DESCRIPTION	REQ
A	1/4 DIA.	6

REF: LD2288

REQ'D	ITEM	PART NUMBER	DESCRIPTION	SYM.
6	2	FS109-3	RING, RETAINING	A
6	1	FS110-1	STUD, TURNLOCK	A

BUDETTI		LIST OF MATERIAL	
FINAL APPROVAL	<i>[Signature]</i>	DATE	
MECH. DES.	A. PETROCCA	DATE	12-19-67
ELECT. DES.	<i>[Signature]</i>	DATE	5-7-68
CHECKED	<i>[Signature]</i>	DATE	5-7-68
DRAWN	A. PETROCCA	DATE	12-19-67

THE TECHNICAL MATERIEL CORP.
MAMARONECK, NEW YORK

COVER, BOTTOM - SWCD-3K

UNLESS OTHERWISE SPECIFIED DIMENSIONS ARE IN INCHES AND INCLUDE CHEMICALLY APPLIED OR PLATED FINISHES

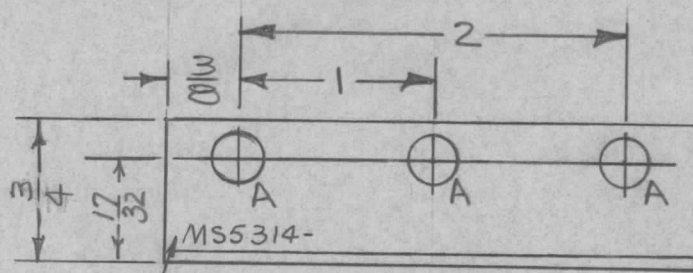
DECIMALS	FRACTIONS
.X ± .05	1/64
.XX ± .01	ANGLES
.XXX ± .005	0° - 30'

MATERIAL .051 THK ALUMINUM 5052-H32
FINISH S404 ~ YEL. IRIDITE
S401-451

NOTICE TO PERSONS RECEIVING THIS DRAWING
THE TECHNICAL MATERIEL CORPORATION claims proprietary right in the material disclosed hereon. This drawing is issued in confidence for engineering information only and may not be reproduced or used to manufacture anything shown hereon without permission from THE TECHNICAL MATERIEL CORPORATION to the user. This drawing is loaned for mutual assistance and is subject to recall at any time.

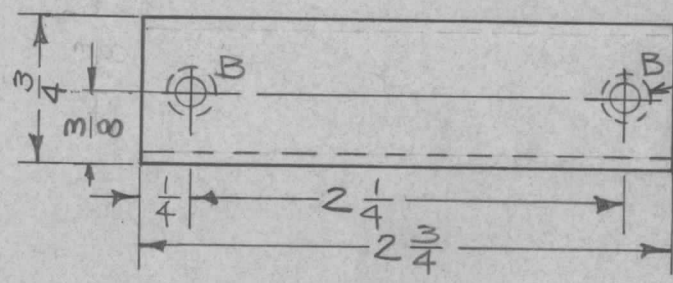
SIZE	CODE IDENT. NO.	DWG NO.	ISSUE
A	82679	MS5313	Ø
SCALE DO NOT SCALE		SHEET	OF

APPLICATION			REVISIONS						
QTY	MODEL USED ON	ASS'Y NO.	LTR	DESCRIPTION	DATE	E.M.N.NO	DRAFT	CHKD	APPD
1	SWCD-3K		X	EXP. RELEASE	1.3.68		A.P.		
			Ø	ORIGINAL RELEASE FOR PRODUCTION	5.7.68	Ø			



HOLE	DESCRIPTION	REQ
A	1/4 DIA.	3
B	.191-.194 DIA.	2

MARK TMC P/N 1/8 HIGH
GOTHIC W/LATEST
REV. LETTER



1 MOUNT IN "B" HOLES
AS SHOWN AFTER
FINISHING

UNLESS OTHERWISE SPECIFIED:

1. USE MATERIAL THICKNESS FOR MAXIMUM RADIUS ON ALL BENDS.
2. ALL ANGULAR BENDS 90 DEGREES.
3. REMOVE ALL BURRS & SHARP EDGES.
4. MOUNT INSERTS AFTER FINISHING

REQ'D	ITEM	PART NUMBER	DESCRIPTION	SYM.
2	1	NT129-632-4	NUT, PLAIN, SPLINE	B

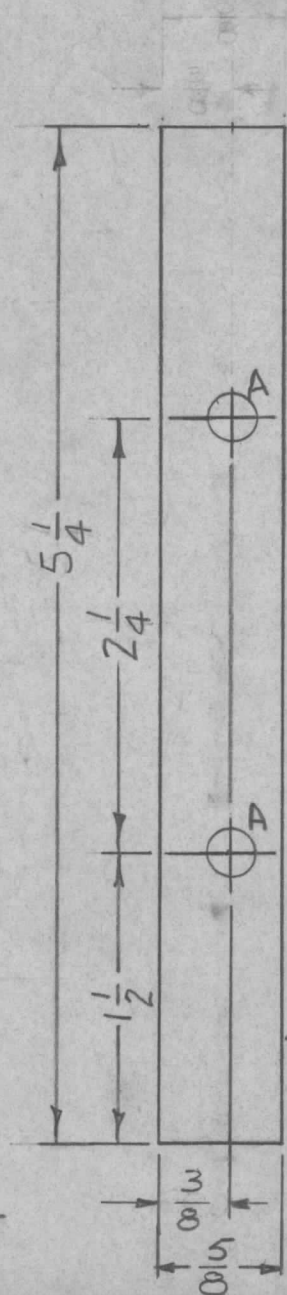
BUDETTI LIST OF MATERIAL			
FINAL APPROVAL		DATE	
MECH. DES.		DATE	
ELECT. DES.		DATE	
CHECKED		DATE	
DRAWN		DATE	
A. PETROCCA		1.3.68	
THE TECHNICAL MATERIEL CORP. MAMARONECK, NEW YORK BRACKET, RESISTOR MOUNT			

UNLESS OTHERWISE SPECIFIED DIMENSIONS ARE IN INCHES AND INCLUDE CHEMICALLY APPLIED OR PLATED FINISHES	
DECIMALS	FRACTIONS
.X ± .05	1/64
.XX ± .01	ANGLES
.XXX ± .005	0° - 30'
MATERIAL .064 ALUMINUM 5052-H32	
FINISH S404-YEL. IRIDITE	
S401-451	

NOTICE TO PERSONS RECEIVING THIS DRAWING
THE TECHNICAL MATERIEL CORPORATION claims proprietary right in the material disclosed hereon. This drawing is issued in confidence for engineering information only and may not be reproduced or used to manufacture anything shown hereon without permission from THE TECHNICAL MATERIEL CORPORATION to the user. This drawing is loaned for mutual assistance and is subject to recall at any time.

SIZE	CODE IDENT. NO.	DWG NO.	ISSUE
A	82679	MS5314	Ø
SCALE DO NOT SCALE		SHEET	OF

APPLICATION			REVISIONS							
QTY	MODEL USED ON	ASS'Y NO.	LTR	DESCRIPTION	DATE	E.M.N.NO	DRAFT	CHKD	APPD	
2	GPTA-2.5JB	URA/38	X	EXP. RELEASE	1.3.68		A.P.		AP	
2	HFTA-1KT	RAK137	Ø	ORIGINAL RELEASE FOR PRODUCTION	5.7.68	Ø	H.G.			
			A	ADD AS PER CUSTOMER SPEC	11/19/71	20457	W.			



"HOLES ~ 1/4 DIA. ~ 2 REQ.

FINISH NOTES:

1. S404- YEL IRIDITE
2. S114- ZINC CHROMATE PRIMER
3. S115- SMOOTH GRAY ENAMEL OR PER CUSTOMERS SPEC.
4. PRIME & PAINT ALL SURFACES

← MARK TMC P/N (MS5315) 1/8 HIGH GOTHIC W/LATEST REV. LETTER ON REAR.

REQ'D	ITEM	PART NUMBER	DESCRIPTION	SYM.
UNLESS OTHERWISE SPECIFIED DIMENSIONS ARE IN INCHES AND INCLUDE CHEMICALLY APPLIED OR PLATED FINISHES				
BUDETTI LIST OF MATERIAL				
MATERIAL 1/8 ALUMINUM 5052-H32		MECH. DES. A. PETROCCA	DATE 1-3-68	THE TECHNICAL MATERIEL CORP. MAMARONECK, NEW YORK
FINISH SEE NOTES		ELECT. DES. [Signature]	DATE 5-7-68	
S401-451		CHECKED	DATE	
		DRAWN A. PETROCCA	DATE 1-3-68	
			SHIM, BRACKET MOUNT (C3698/URA38)	

NOTICE TO PERSONS RECEIVING THIS DRAWING THE TECHNICAL MATERIEL CORPORATION claims proprietary right in the material disclosed herein. This drawing is issued in confidence for engineering information only and may not be reproduced or used to manufacture anything shown hereon without permission from THE TECHNICAL MATERIEL CORPORATION to the user. This drawing is loaned for mutual assistance and is subject to recall at any time.				SIZE A	CODE IDENT. NO. 82679	DWG NO. MS5315	ISSUE A
SCALE DO NOT SCALE			SHEET OF				

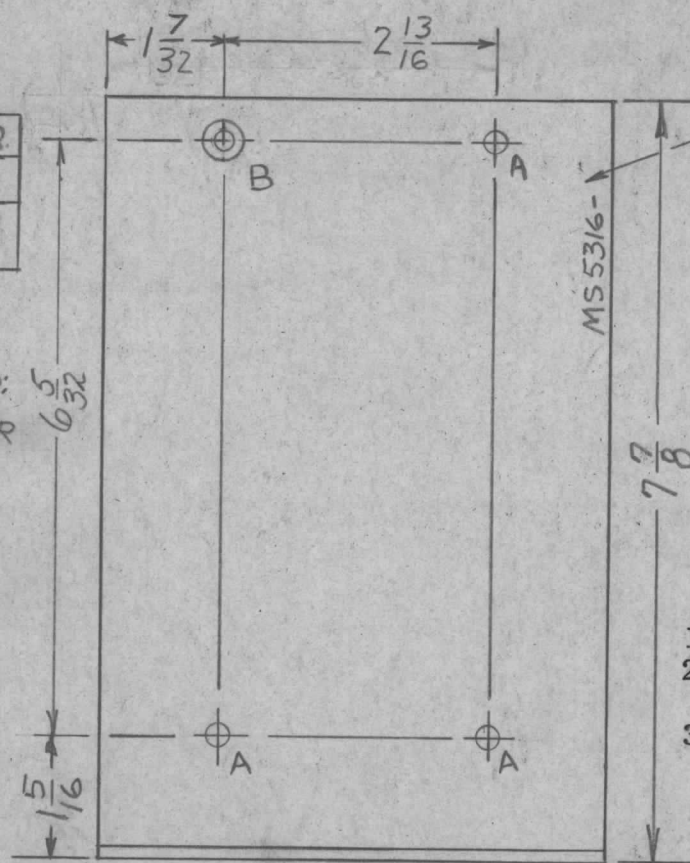
APPLICATION

REVISIONS

QTY	MODEL USED ON	ASS'Y NO.	LTR	DESCRIPTION	DATE	E.M.N.NO	DRAFT	CHKD	APPD
2	GPTA-2.5KJ8	URA/38	X	EXP. RELEASE	12.15.67		A.P.		
2	HFTA-1KJ	RAK137	XI	ONE "A" HOLE DEL.; "B" HOLE ADD.	4-22-68		GDL		
			Ø	ORIG. RELEASE FOR PROD.	4-24-68	Ø	R.G.		
			A	ADD AS PER CUSTOMER SPEC	11/19/71	20457			

HOLE	DESCRIPTION	REQ.
A	15/64 DIA	3
B	.196 D. C/SK182° TO .390 D.	1

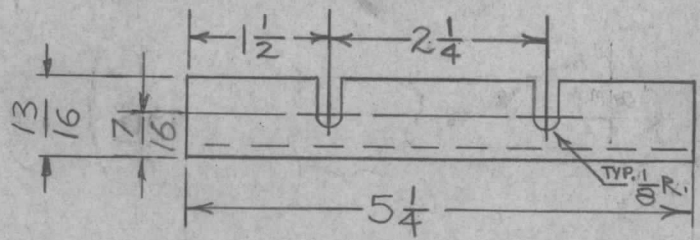
- UNLESS OTHERWISE SPECIFIED:
1. USE MATERIAL THICKNESS FOR MAXIMUM RADIUS ON ALL BENDS.
 2. ALL ANGULAR BENDS 90 DEGREES.
 3. REMOVE ALL BURRS & SHARP EDGES.



MARK TMC P/N 1/8 HIGH GOTHIC W/LATEST REV. LETTER

FINISH NOTES:

1. S404- YEL IRIDITE
2. S114- ZINC CHROMATE PRIMER
3. S115- SMOOTH GRAY ENAMEL OR PER CUSTOMERS SPEC.
4. PRIME & PAINT ALL SURFACES



UNLESS OTHERWISE SPECIFIED DIMENSIONS ARE IN INCHES AND INCLUDE CHEMICALLY APPLIED OR PLATED FINISHES

REQ'D	ITEM	PART NUMBER	DESCRIPTION	SYM.
	BUDETTI LIST OF MATERIAL			
FINAL APPROVAL		DATE	THE TECHNICAL MATERIEL CORP. MAMARONECK, NEW YORK BRACKET RAK MOUNT, (C-3698/URA 38)	
MECH. DES.		DATE		
ELECT. DES.		DATE		
CHECKED		DATE		
DRAWN		DATE		

MATERIAL .081 ALUMINUM 5052-H32
 FINISH SEE FINISH NOTES
 S401-451

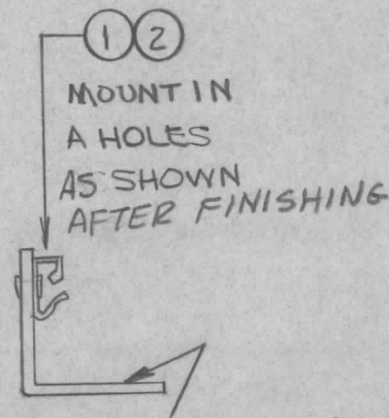
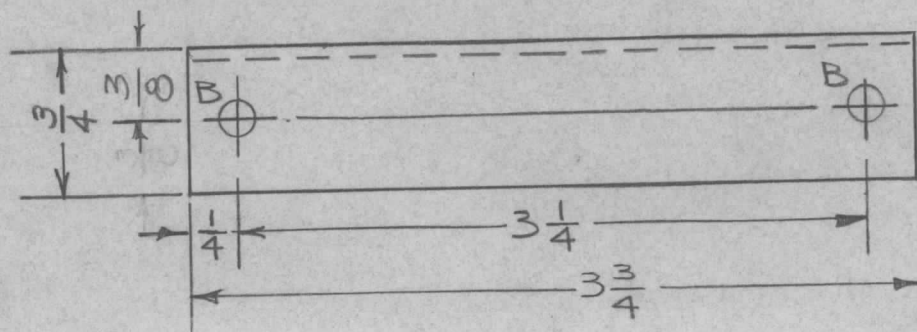
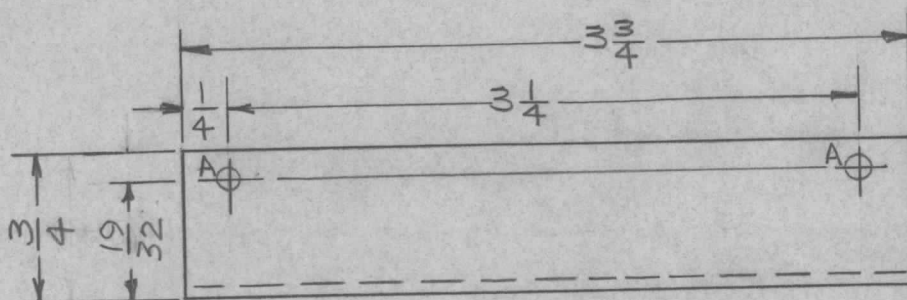
NOTICE TO PERSONS RECEIVING THIS DRAWING
 THE TECHNICAL MATERIEL CORPORATION claims proprietary right in the material disclosed hereon. This drawing is issued in confidence for engineering information only and may not be reproduced or used to manufacture anything shown hereon without permission from THE TECHNICAL MATERIEL CORPORATION to the user. This drawing is loaned for mutual assistance and is subject to recall at any time.

SIZE	CODE IDENT. NO.	DWG NO.	ISSUE
A	82679	MS5316	A
SCALE DO NOT SCALE		SHEET	OF

APPLICATION			REVISIONS						
QTY	MODEL USED ON	ASS'Y NO.	LTR	DESCRIPTION	DATE	E.M.N.NO	DRAFT	CHKD	APPD
2	SWCD-3K		X	EXP. RELEASE	1.5.68		A.P.	<i>[Signature]</i>	AP.
			Ø	ORIGINAL RELEASE FOR PRODUCTION	5.7.68	Ø	H.G.	<i>[Signature]</i>	

UNLESS OTHERWISE SPECIFIED:

1. USE MATERIAL THICKNESS FOR MAXIMUM RADIUS ON ALL BENDS,
2. ALL ANGULAR BENDS 90 DEGREES.
3. REMOVE ALL BURRS & SHARP EDGES.



MARK TMC P/N (MS5317) 1/8" HIGH GOTHIC W/LATEST REV. LETTER.

HOLE	DESCRIPTION	REQ
A	.067 DIA.	2
B	13/64 DIA.	2

REQ'D	ITEM	PART NUMBER	DESCRIPTION	SYM.
1	2	CU157-4	RETAINER, PC BOARD	A
2	1	EY100-5	EYELET, MTL	A

UNLESS OTHERWISE SPECIFIED DIMENSIONS ARE IN INCHES AND INCLUDE CHEMICALLY APPLIED OR PLATED FINISHES

BUDETTI

FINAL APPROVAL	DATE
MECH. DES. ALPETROCCA	DATE 1-5-68
ELECT. DES.	DATE 5-7-68
CHECKED	DATE 5-7-68
DRAWN ALPETROCCA	DATE 1-5-68

DECIMALS: .X ± .05, .XX ± .01, .XXX ± .005
 FRACTIONS: 1/64, ANGLES: 0°-30'
 MATERIAL: .063 THK ALUMINUM 5052-H32
 FINISH: S404 ~ YEL. IRIDITE
 S401-451

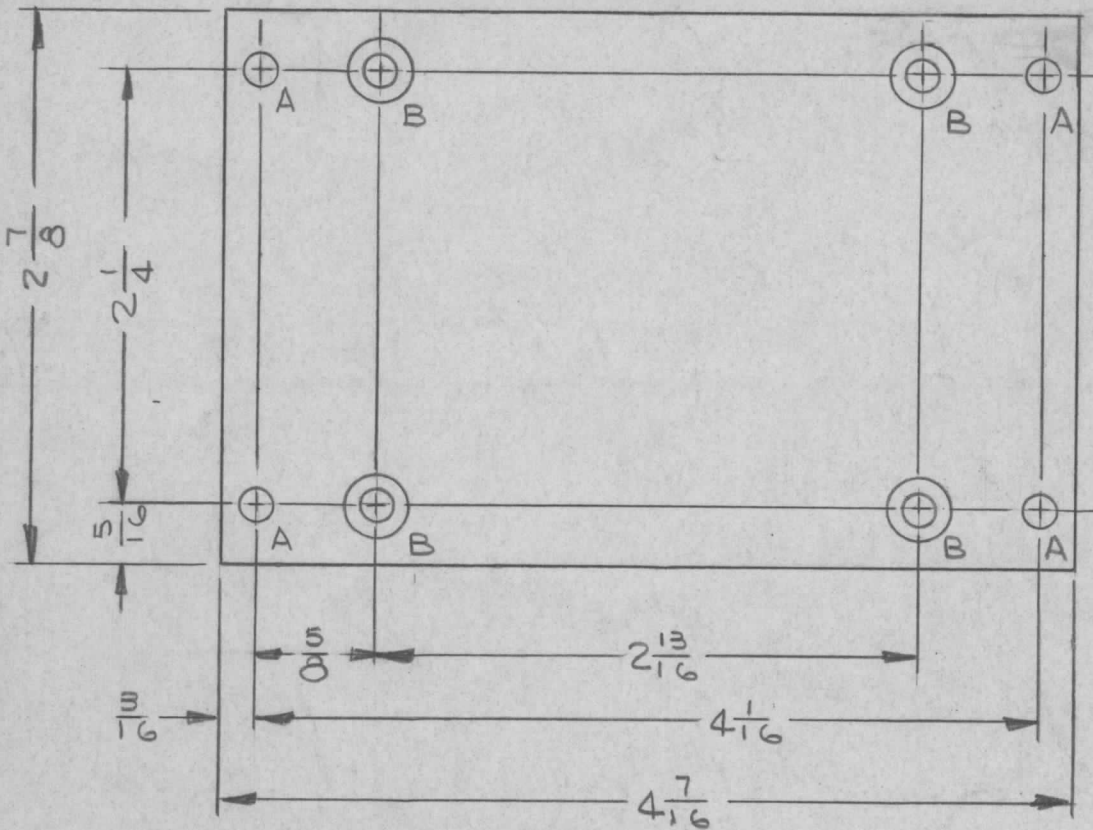
LIST OF MATERIAL

THE TECHNICAL MATERIEL CORP.
 MAMARONECK, NEW YORK

BRACKET, MTG. RETAINER, PC BOARD

NOTICE TO PERSONS RECEIVING THIS DRAWING THE TECHNICAL MATERIEL CORPORATION claims proprietary right in the material disclosed hereon. This drawing is issued in confidence for engineering information only and may not be reproduced or used to manufacture anything shown hereon without permission from THE TECHNICAL MATERIEL CORPORATION to the user. This drawing is loaned for mutual assistance and is subject to recall at any time.	SIZE	CODE IDENT. NO.	DWG NO.	ISSUE
	A	82679	MS5317	Ø
SCALE	DO NOT SCALE	SHEET		OF

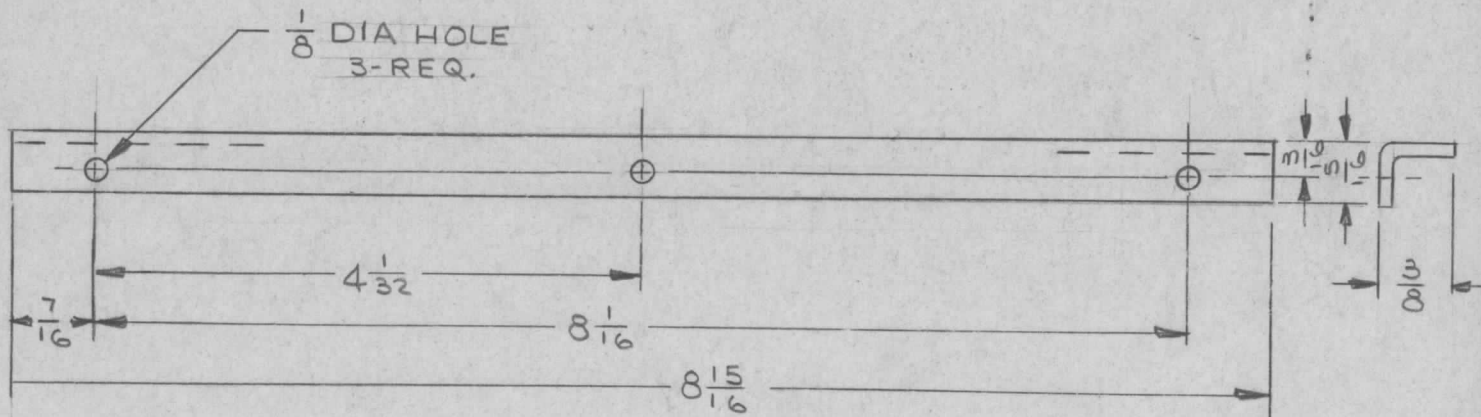
APPLICATION			REVISIONS						
QTY	MODEL USED ON	ASS'Y NO.	LTR	DESCRIPTION	DATE	E.M.N.NO	DRAFT	CHKD	APPD
1	MSAR-4		Ø	ORIG. RELEASE FOR PROD.	11-6-68	Ø	R.G.		<i>Handwritten initials</i>



HOLE LEGEND		
HOLE	DESCRIPTION	REQ
A	1/16 DIA	4
B	.169 DIA & C'SINK 82° TO .337 DIA	4

UNLESS OTHERWISE SPECIFIED DIMENSIONS ARE IN INCHES AND INCLUDE CHEMICALLY APPLIED OR PLATED FINISHES		REQ'D	ITEM	PART NUMBER	DESCRIPTION	SYM.	
DECIMALS .X ± .05 .XX ± .01 .XXX ± .005 TOLS. 1/64 ANGLES 0° - 30'		LIST OF MATERIAL SK3252-005-19 THE TECHNICAL MATERIEL CORP. MAMARONECK, NEW YORK PLATE, MTG-XFMR					
MATERIAL 1/8THK ALUM 5052-H32 FINISH YEL IRIDITE S404		FINAL APPROVAL <i>[Signature]</i>	MECH. DES. JL	DATE 11/6/68 5/26/67			
		ELECT. DES.	CHECKED SG	DATE 5/27/67			
		DRAWN JL	DATE 5/26/67				
NOTICE TO PERSONS RECEIVING THIS DRAWING THE TECHNICAL MATERIEL CORPORATION claims proprietary right in the material disclosed hereon. This drawing is issued in confidence for engineering information only and may not be reproduced or used to manufacture anything shown hereon without permission from THE TECHNICAL MATERIEL CORPORATION to the user. This drawing is loaned for mutual assistance and is subject to recall at any time.				SIZE A	CODE IDENT. NO. 82679	DWG NO. MS 533219	ISSUE Ø
SCALE			SHEET		OF		

APPLICATION			REVISIONS						
QTY	MODEL USED ON	ASS'Y NO.	LTR	DESCRIPTION	DATE	E.M.N.NO	DRAFT	CHKD	APPD
13	MSAR-4		Ø	ORIG. RELEASE FOR PROD.	11-6-68	Ø	R.G.		<i>JL</i>



UNLESS OTHERWISE SPECIFIED DIMENSIONS ARE IN INCHES AND INCLUDE CHEMICALLY APPLIED OR PLATED FINISHES

REQ'D	ITEM	PART NUMBER	DESCRIPTION	SYM.
			SK3252-005-14	

LIST OF MATERIAL

DECIMALS .X ± .05 .XX ± .01 .XXX ± .005	FRACTIONS 1/64 ANGLES 0° .30'
MATERIAL .063 THK ALUMINUM 5052-H32	
FINISH YEL IRIDITE PER S404	

FINAL APPROVAL <i>JL</i>	DATE 11/6/68
MECH. DES. <i>JL</i>	DATE 5/26/67
ELECT. DES.	DATE
CHECKED <i>SG</i>	DATE 5/26/67
DRAWN <i>JL</i>	DATE 5/26/67

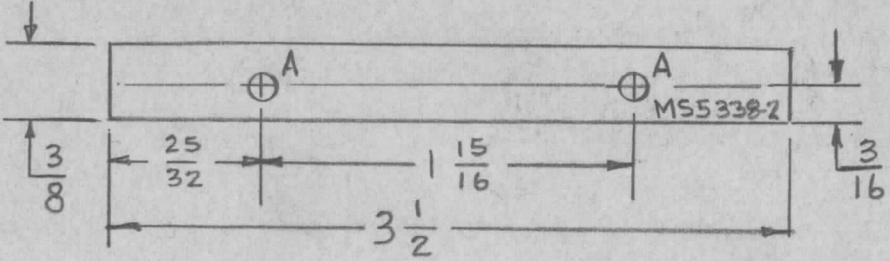
THE TECHNICAL MATERIEL CORP.
MAMARONECK, NEW YORK

STIFFENER - P.C. BORD

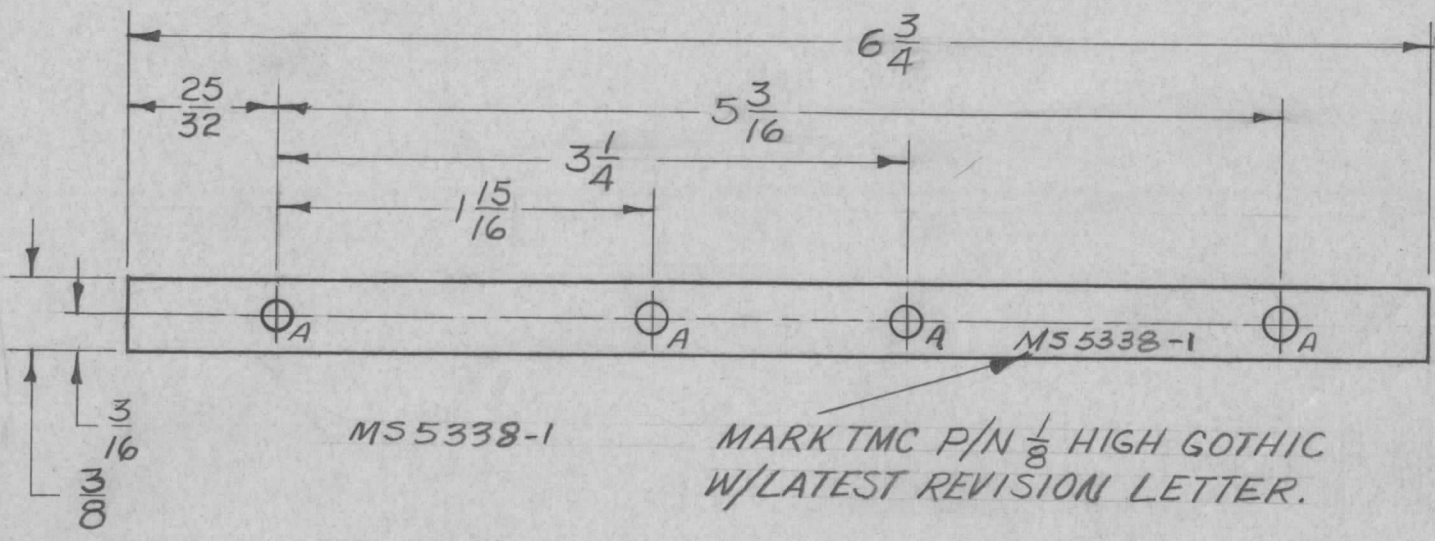
NOTICE TO PERSONS RECEIVING THIS DRAWING
THE TECHNICAL MATERIEL CORPORATION claims proprietary right in the material disclosed hereon. This drawing is issued in confidence for engineering information only and may not be reproduced or used to manufacture anything shown hereon without permission from THE TECHNICAL MATERIEL CORPORATION to the user. This drawing is loaned for mutual assistance and is subject to recall at any time.

SIZE A	CODE IDENT. NO. 82679	DWG NO. MS5333-14	ISSUE Ø
SCALE	SHEET		OF

APPLICATION			REVISIONS						
QTY	MODEL USED ON	ASS'Y NO.	LTR	DESCRIPTION	DATE	E.M.N.NO	DRAFT	CHKD	APPD
2	MMX-()-2		X	EXP. RELEASE	2/2/68	#	<i>Comp</i>	<i>W.P.</i>	<i>EXH</i>
2	VOX-7		Ø	ORIG. RELEASE FOR PROD.	3/13/69		RG		
2	MMX-1		A	ADD - 2	9/22/77	21574	<i>W.P.</i>	K.P.	✓
2	CHG() 4								



MS5338-2



MS5338-1

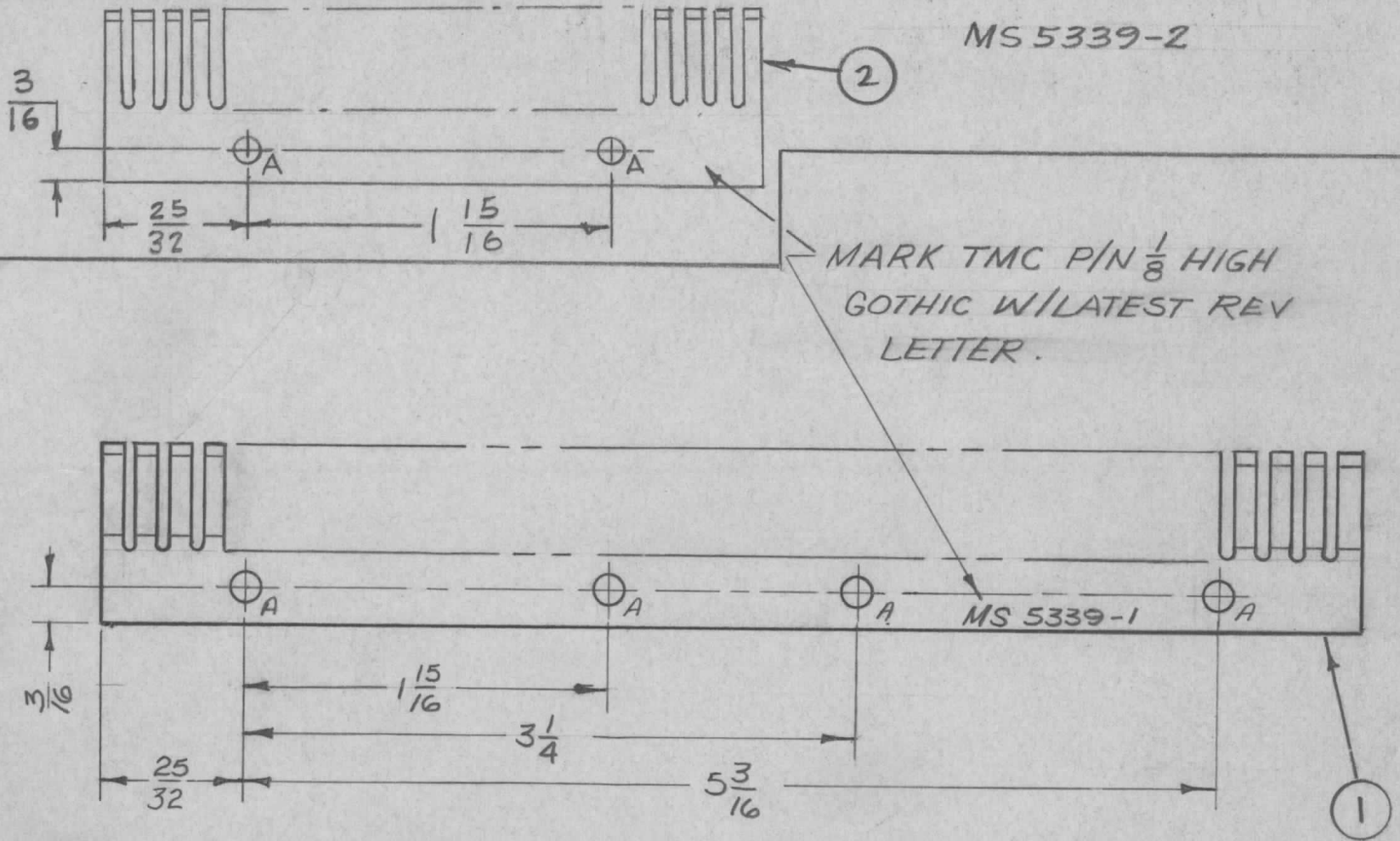
MARK TMC P/N $\frac{1}{8}$ HIGH GOTHIC W/LATEST REVISION LETTER.

HOLE	DESCRIPTION	QTY - 1	QTY - 2
A	9/64 DIA.	4	2

<small>UNLESS OTHERWISE SPECIFIED DIMENSIONS ARE IN INCHES AND INCLUDE CHEMICALLY APPLIED OR PLATED FINISHES</small> <small>DECIMALS: .X ± .05, .XX ± .01, .XXX ± .005</small> <small>FRACTIONS: 1/64, ANGLES: 0°-30'</small> MATERIAL. .063 THK ALUMINUM 5052-H32 FINISH S409 YELLOW IRIDITE S401-451	REQ'D	ITEM	PART NUMBER	DESCRIPTION	SYM.
	O. POSE LIST OF MATERIAL				
	MECH. DES.	DATE	THE TECHNICAL MATERIEL CORP. MAMARONECK, NEW YORK		
	ELECT. DES.	DATE	PLATE, MTG. CONTACT ELECT.		
	CHECKED	DATE			
DRAWN	DATE				

<small>NOTICE TO PERSONS RECEIVING THIS DRAWING</small> <small>THE TECHNICAL MATERIEL CORPORATION claims proprietary right in the material disclosed hereon. This drawing is issued in confidence for engineering information only and may not be reproduced or used to manufacture anything shown hereon without permission from THE TECHNICAL MATERIEL CORPORATION to the user. This drawing is loaned for mutual assistance and is subject to recall at any time.</small>	SIZE	CODE IDENT. NO.	DWG NO.	ISSUE
	A	82679	MS 5338	A
	SCALE 1:1		SHEET OF	

APPLICATION			REVISIONS						
QTY	MODEL USED ON	ASS'Y NO.	LTR	DESCRIPTION	DATE	E.M.N.NO	DRAFT	CHKD	APPD
2	MMX(-)-2		X	EXP. RELEASE	2/2/68	#			
2	VOX-7		Ø	ORIG. RELEASE FOR PROD.	3/13/69		RG		
2	MMX-1		A	ADD - 2	9/12/71	21574		KP	✓
2	CHG(-)4								



HOLE	DESCRIPTION	REQ.
A	$\frac{9}{64}$ DIA.	4

REQ'D	ITEM	PART NUMBER	DESCRIPTION	SYM.
2	1	FP160C3.500P	CONTACT ELECTRICAL	
2	1	FP160C6.750P	CONTACT ELECTRICAL	1

O. POSE

FINAL APPROVAL	DATE
MECH. DES.	DATE
ELECT. DES.	DATE
CHECKED	DATE
DRAWN	DATE

LIST OF MATERIAL

THE TECHNICAL MATERIEL CORP.
MAMARONECK, NEW YORK

CONTACT, ELECTRICAL

UNLESS OTHERWISE SPECIFIED DIMENSIONS ARE IN INCHES AND INCLUDE CHEMICALLY APPLIED OR PLATED FINISHES

DECIMALS	FRACTIONS
.X ± .05	TOLS. 1/64
.XX ± .01	ANGLES 0° - 30'
.XXX ± .005	

MATERIAL

FINISH

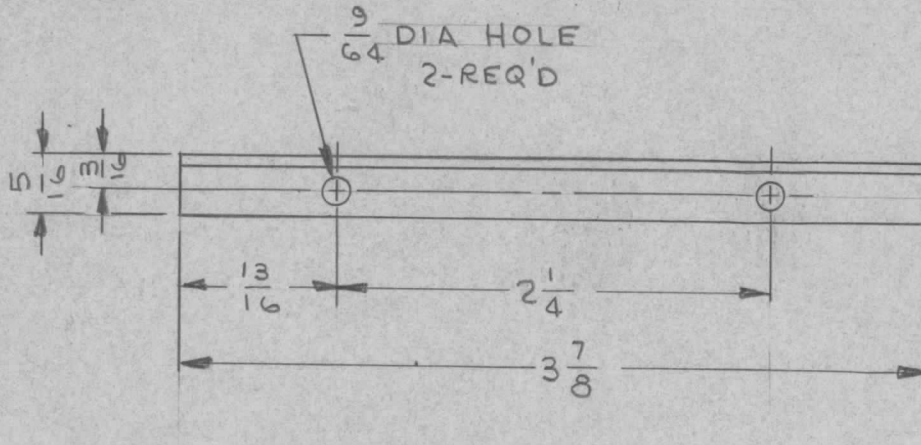
S 401-451

NOTICE TO PERSONS RECEIVING THIS DRAWING THE TECHNICAL MATERIEL CORPORATION claims proprietary right in the material disclosed hereon. This drawing is issued in confidence for engineering information only and may not be reproduced or used to manufacture anything shown hereon without permission from THE TECHNICAL MATERIEL CORPORATION to the user. This drawing is loaned for mutual assistance and is subject to recall at any time.				SIZE A	CODE IDENT. NO. 82679	DWG NO. MS 5339	ISSUE A
SCALE 1:1			SHEET		OF		

APPLICATION

REVISIONS

QTY	MODEL USED ON	ASS'Y NO.	LTR	DESCRIPTION	DATE	E.M.N.NO	DRAFT	CHKD	APPD
6	HFSR-4		Ø	ORIG. RELEASE FOR PROD.	11-6-68	Ø	R.G.		<i>JL</i>



UNLESS OTHERWISE SPECIFIED DIMENSIONS ARE IN INCHES AND INCLUDE CHEMICALLY APPLIED OR PLATED FINISHES

REQ'D	ITEM	PART NUMBER	DESCRIPTION	SYM.
-------	------	-------------	-------------	------

LIST OF MATERIAL SK 3252-004-25

DECIMALS FRACTIONS
 .X ± .05 1/64
 .XX ± .01 TOLS. ANGLES
 .XXX ± .005 0°-30'

FINAL APPROVAL <i>[Signature]</i>	DATE 11/6/68
MECH. DES. M. ZETENA	DATE
ELECT. DES.	DATE
CHECKED <i>[Signature]</i>	DATE 10/30/68
DRAWN JL	DATE 9/27/67

THE TECHNICAL MATERIEL CORP.
 MAMARONECK, NEW YORK

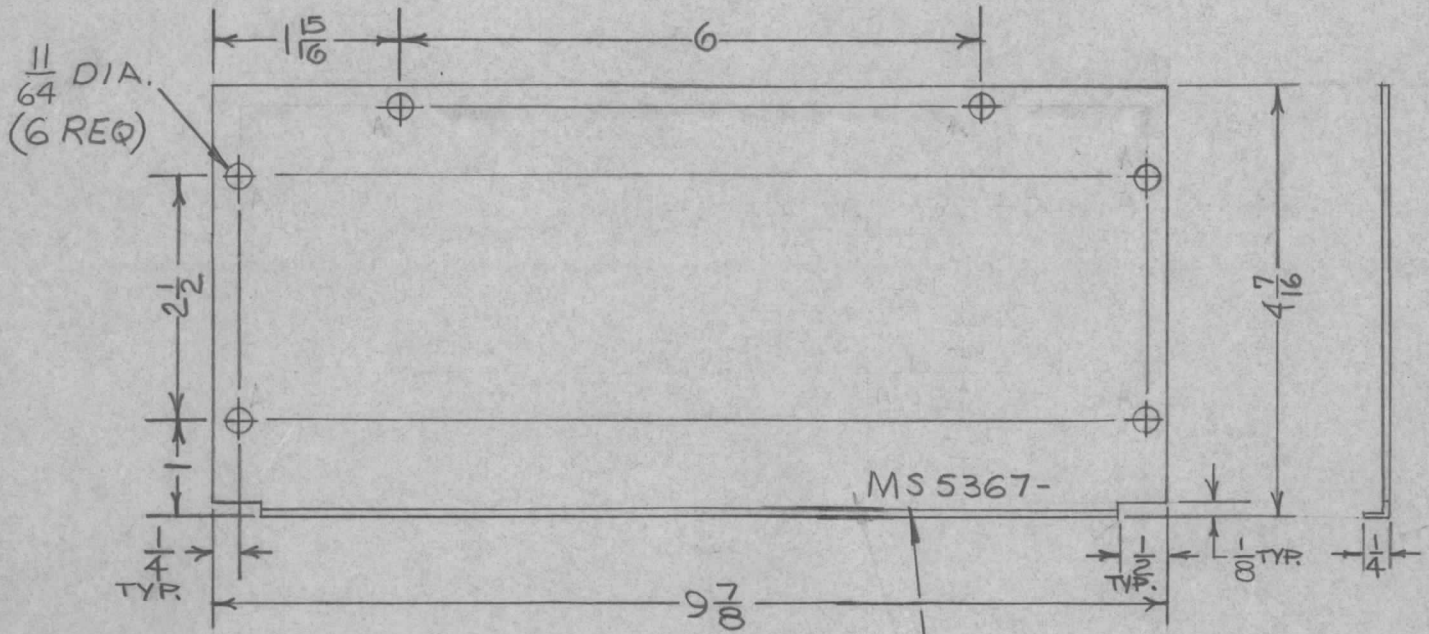
MATERIAL .063 THK ALUM. 5052-H32
 FINISH YELLOW IRIDITE 5404

STIFFENER - LEDEX P.C. CARD

NOTICE TO PERSONS RECEIVING THIS DRAWING
 THE TECHNICAL MATERIEL CORPORATION claims proprietary right in the material disclosed hereon. This drawing is issued in confidence for engineering information only and may not be reproduced or used to manufacture anything shown hereon without permission from THE TECHNICAL MATERIEL CORPORATION to the user. This drawing is loaned for mutual assistance and is subject to recall at any time.

SIZE A	CODE IDENT. NO. 82679	DWG NO. MS5342	ISSUE Ø
SCALE		SHEET	OF

APPLICATION			REVISIONS						
QTY	MODEL USED ON	ASS'Y NO.	LTR	DESCRIPTION	DATE	E.M.N.NO	DRAFT	CHKD	APPD
1	AX5031 (KIT-321)		X	EXP. RELEASE	2-68		A.P.		
			Ø	ORIG. RELEASE FOR PROD.	2-13-69	Ø	RG		



UNLESS OTHERWISE SPECIFIED

1. USE MATERIAL THICKNESS FOR MAXIMUM RADIUS ON ALL BENDS.
2. ALL ANGULAR BENDS 90 DEGREES.
3. REMOVE ALL BURRS & SHARP EDGES.

MARK TMC P/N $\frac{1}{8}$ HIGH
GOTHIC W/LATEST REV.
LETTER

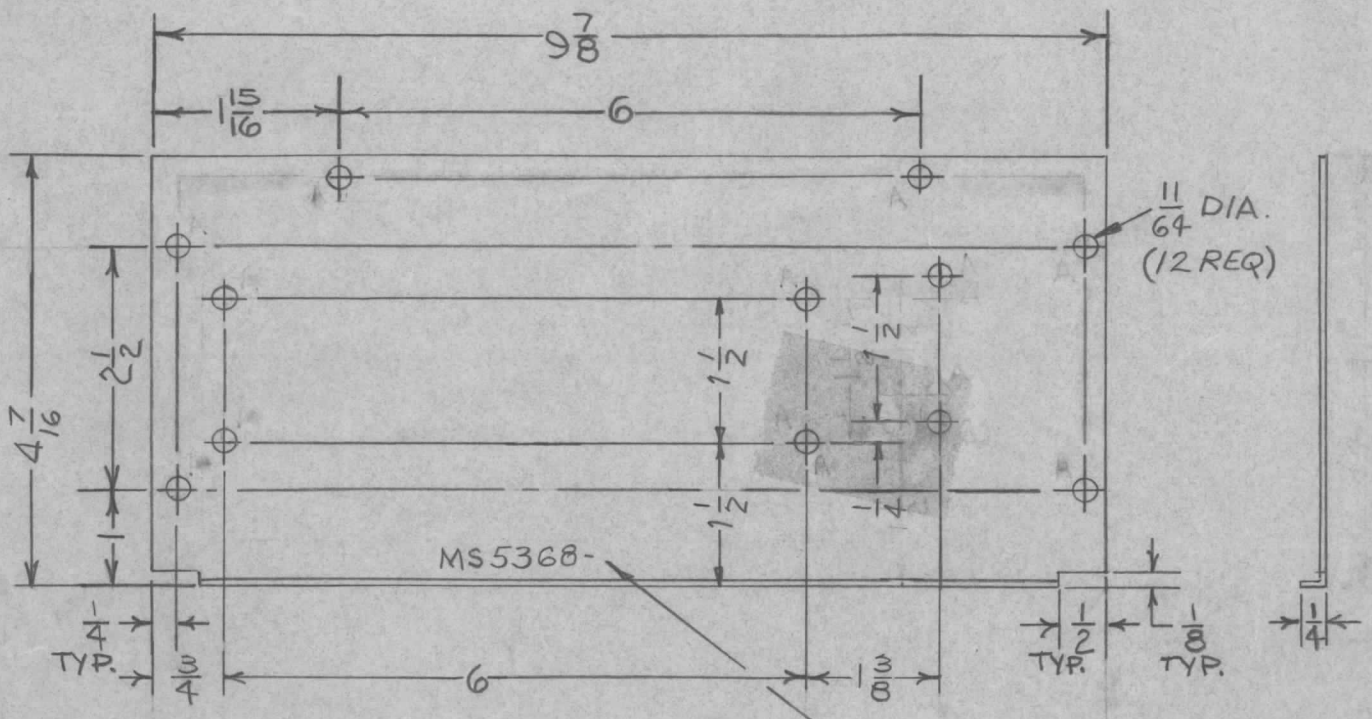
UNLESS OTHERWISE SPECIFIED
DIMENSIONS ARE IN INCHES
AND INCLUDE CHEMICALLY APPLIED
OR PLATED FINISHES

REQ'D	ITEM	PART NUMBER	DESCRIPTION	SYM.
F. BUDETTI LIST OF MATERIAL				
DECIMALS .X ± .05 .XX ± .01 .XXX ± .005		FRACTIONS 1/64 ANGLES 0° - 30'		THE TECHNICAL MATERIEL CORP. MAMARONECK, NEW YORK COVER, TOP
MATERIAL 051 THICK ALUMINUM 5052-H32		MECH. DES. A. COGGIA	DATE 2-68	
FINISH S404-YEL. IRIDITE		ELECT. DES. S. ROZZO	DATE 2-68	
S401-451		CHECKED SG	DATE 2-6-68	
		DRAWN AL PETROCCA	DATE 2-68	

NOTICE TO PERSONS RECEIVING THIS DRAWING
THE TECHNICAL MATERIEL CORPORATION claims proprietary right in the material disclosed herein. This drawing is issued in confidence for engineering information only and may not be reproduced or used to manufacture anything shown hereon without permission from THE TECHNICAL MATERIEL CORPORATION to the user. This drawing is loaned for mutual assistance and is subject to recall at any time.

SIZE A	CODE IDENT. NO. 82679	DWG NO. MS5367	ISSUE Ø
SCALE 1:2		SHEET OF	

APPLICATION			REVISIONS							
QTY	MODEL USED ON	ASS'Y NO.	LTR	DESCRIPTION	DATE	E.M.N.NO	DRAFT	CHKD	APPD	
1	AX5031(KIT-321)		X	EXP. RELEASE	3.11.68		A.P.	///	2	
			Ø	ORIG. RELEASE FOR PROD.	2.13.69	Ø	RG			



- UNLESS OTHERWISE SPECIFIED
1. USE MATERIAL THICKNESS FOR MAXIMUM RADIUS ON ALL BENDS.
 2. ALL ANGULAR BENDS 90 DEGREES.
 3. REMOVE ALL BURRS & SHARP EDGES.

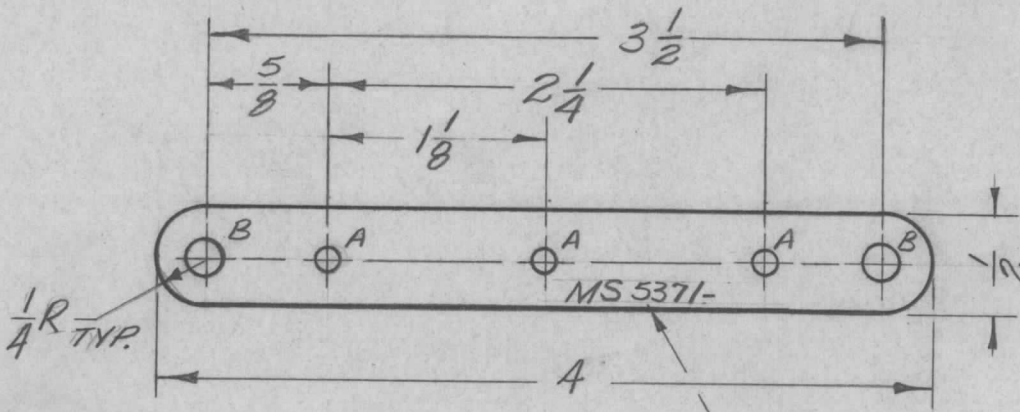
MARK TMC P/N $\frac{1}{8}$ HIGH GOTHIC W/LATEST REV. LETTER

UNLESS OTHERWISE SPECIFIED DIMENSIONS ARE IN INCHES AND INCLUDE CHEMICALLY APPLIED OR PLATED FINISHES		REQ'D	ITEM	PART NUMBER	DESCRIPTION	SYM.
DECIMALS .X ± .05 .XX ± .01 .XXX ± .005		F. BUDETTI		LIST OF MATERIAL		
FRACTIONS 1/64 ANGLES 0° 30'		MECH. DES. A. COGGIA		THE TECHNICAL MATERIEL CORP. MAMARONECK, NEW YORK		
TOLS.		ELECT. DES. S. ROZZO		COVER, BOTTOM		
MATERIAL .051 THICK ALUMINUM 5052-H32		CHECKED SG				
FINISH S404 ~YEL. IRIDITE		DRAWN ALPETROCCA				
S401-451		DATE 2-68				

NOTICE TO PERSONS RECEIVING THIS DRAWING THE TECHNICAL MATERIEL CORPORATION claims proprietary right in the material disclosed hereon. This drawing is issued in confidence for engineering information only and may not be reproduced or used to manufacture anything shown hereon without permission from THE TECHNICAL MATERIEL CORPORATION to the user. This drawing is loaned for mutual assistance and is subject to recall at any time.				SIZE A	CODE IDENT. NO. 82679	DWG NO. MS5368	ISSUE Ø
SCALE 1:2			SHEET OF				

APPLICATION			REVISIONS						
QTY	MODEL USED ON	ASS'Y NO.	LTR	DESCRIPTION	DATE	E.M.N.NO	DRAFT	CHKD	APPD
1	LPA-2		X	EXP. RELEASE	3/5/68	#	Emp		
			Ø	ORIG. RELEASE FOR PROD.	2-18-69	Ø	RG		

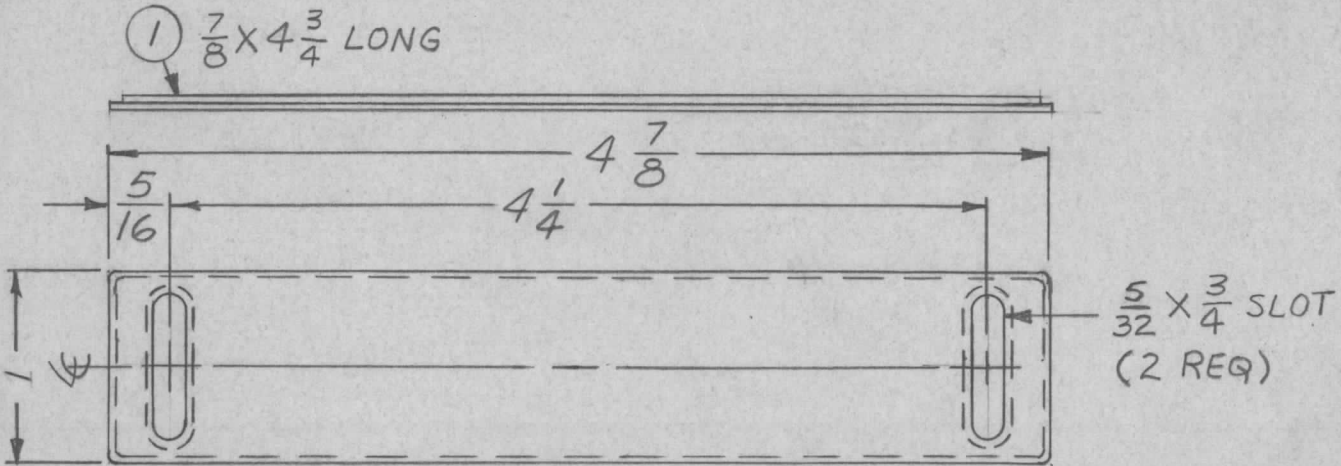
HOLES	DESCRIPTION	REQ.
A	11/64 DIA.	3
B	13/64 DIA.	2



MARK TMC P/N
 1/8 HIGH GOTHIC
 W/LATEST REV. LETTER

UNLESS OTHERWISE SPECIFIED DIMENSIONS ARE IN INCHES AND INCLUDE CHEMICALLY APPLIED OR PLATED FINISHES		REQ'D	ITEM	PART NUMBER	DESCRIPTION	SYM.	
DECIMALS .X ± .05 .XX ± .01 .XXX ± .005		F. BUDETTI		LIST OF MATERIAL			
FRACTIONS 1/64 ANGLES 0° - 30'		FINAL APPROVAL	DATE	THE TECHNICAL MATERIEL CORP.			
MATERIAL .031 THK. HOT ROLLED COPPER		MECH. DES.	DATE	MAMARONECK, NEW YORK			
FINISH S 245 SILVER PLATE		ELECT. DES.	DATE	LEAD, ELECTRICAL			
S 401-451		CHECKED	DATE				
		DRAWN	DATE				
NOTICE TO PERSONS RECEIVING THIS DRAWING THE TECHNICAL MATERIEL CORPORATION claims proprietary right in the material disclosed hereon. This drawing is issued in confidence for engineering information only and may not be reproduced or used to manufacture anything shown hereon without permission from THE TECHNICAL MATERIEL CORPORATION to the user. This drawing is loaned for mutual assistance and is subject to recall at any time.				SIZE A	CODE IDENT. NO. 82679	DWG NO. MS 5371	ISSUE Ø
				SCALE 1:1	SHEET OF		

APPLICATION			REVISIONS						
QTY	MODEL USED ON	ASS'Y NO.	LTR	DESCRIPTION	DATE	E.M.N.NO	DRAFT	CHKD	APPD
1	LPA-2		X	EXP. RELEASE	3.8.68	+	H.S.		(Signature)
			Ø	ORIG. RELEASE FOR PROD.	2-18-69	Ø	RG		



FINISH NOTES:

1. S404 - IRIDITE 14-2 AL-COAT.
2. S114 - ZINC CHROMATE PRIMER } FRONT AND
3. SEE CHART } EDGES ONLY

OR

PRIME AND PAINT PER CUSTOMER'S SPECIFICATIONS.

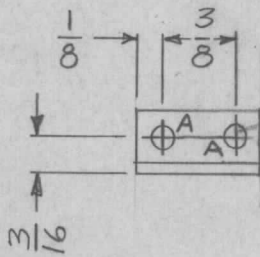
TMC P/N	FINISH #3
MS5372-1	S115 SMOOTH GRAY ENAMEL
MS5372-2	S1218 LIGHT AQUA

X	1		FELT, ADHESIVE BACKED		
UNLESS OTHERWISE SPECIFIED DIMENSIONS ARE IN INCHES AND INCLUDE CHEMICALLY APPLIED OR PLATED FINISHES	REQ'D	ITEM	PART NUMBER	DESCRIPTION	SYM.
DECIMALS .X ± .05 .XX ± .01 .XXX ± .005	F. BUDETTI		LIST OF MATERIAL		
FRACTIONS 1/64 ANGLES 0° 30'	FINAL APPROVAL	DATE	THE TECHNICAL MATERIEL CORP.		
MATERIAL 063 THICK ALUMINUM 5052-H32	MECH. DES.	DATE	MAMARONECK, NEW YORK		
FINISH SEE NOTES	ELECT. DES.	DATE	PLATE, COVER		
S401-451	CHECKED	DATE			
	DRAWN	DATE			

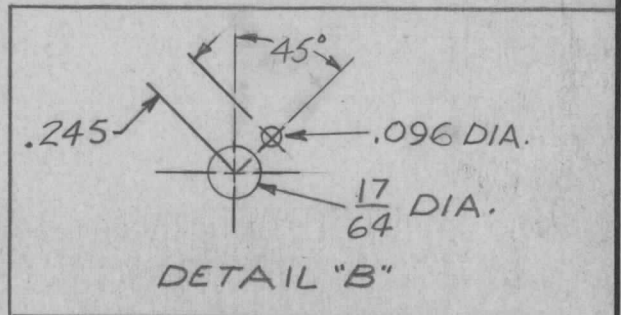
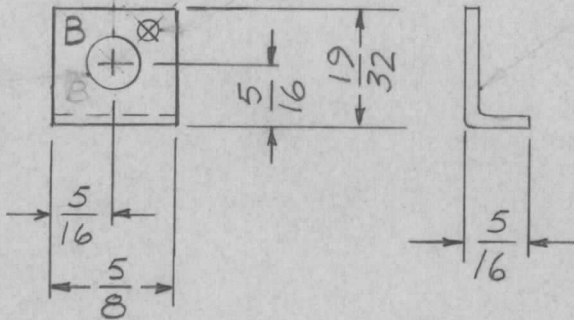
NOTICE TO PERSONS RECEIVING THIS DRAWING
 THE TECHNICAL MATERIEL CORPORATION claims proprietary right in the material disclosed hereon. This drawing is issued in confidence for engineering information only and may not be reproduced or used to manufacture anything shown hereon without permission from THE TECHNICAL MATERIEL CORPORATION to the user. This drawing is loaned for mutual assistance and is subject to recall at any time.

SIZE	CODE IDENT. NO.	DWG NO.	ISSUE
A	82679	MS5372	Ø
SCALE	1:1	SHEET	OF

APPLICATION			REVISIONS						
QTY	MODEL USED ON	ASS'Y NO.	LTR	DESCRIPTION	DATE	E.M.N.NO	DRAFT	CHKD	APPD
1	SME(1)6	A4647	X	EXP. RELEASE	3-12-68	-	H.S.		
			Ø	ORIG RELEASE FOR PROD	3/25/68		C.V.		



HOLE	DESCRIPTION	REQ
A	7/64 DIA.	2
B	SEE DETAIL	1



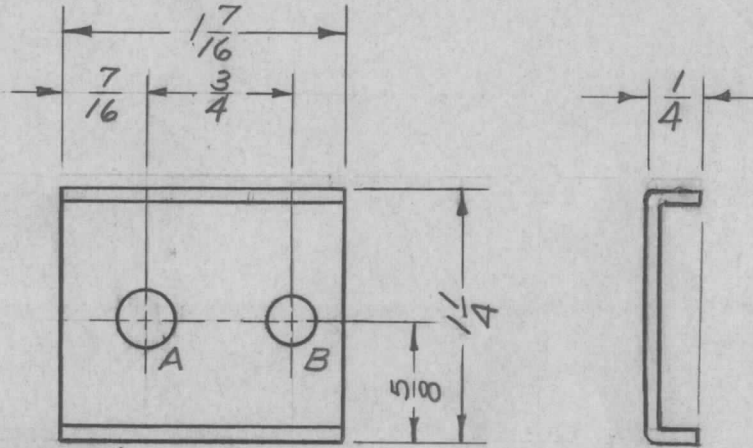
UNLESS OTHERWISE SPECIFIED:

1. USE MATERIAL THICKNESS FOR MAXIMUM RADIUS ON ALL BENDS.
2. ALL ANGULAR BENDS 90 DEGREES.
3. REMOVE ALL BURRS & SHARP EDGES.

UNLESS OTHERWISE SPECIFIED DIMENSIONS ARE IN INCHES AND INCLUDE CHEMICALLY APPLIED OR PLATED FINISHES		REQ'D	ITEM	PART NUMBER	DESCRIPTION	SYM.
DECIMALS .X ± .05 .XX ± .01 .XXX ± .005		FRACTIONS 1/64 ANGLES 0°-30'		0. POSE LIST OF MATERIAL		
MATERIAL .063 THICK ALUMINUM 5052-H32 FINISH S404 YEL IRIDITE S401-451		FINAL APPROVAL MECH. DES. ELECT. DES. CHECKED DRAWN		THE TECHNICAL MATERIEL CORP. MAMARONECK, NEW YORK BRACKET, MTG, POTENTIOMETER		
NOTICE TO PERSONS RECEIVING THIS DRAWING THE TECHNICAL MATERIEL CORPORATION claims proprietary right in the material disclosed hereon. This drawing is issued in confidence for engineering information only and may not be reproduced or used to manufacture anything shown hereon without permission from THE TECHNICAL MATERIEL CORPORATION to the user. This drawing is loaned for mutual assistance and is subject to recall at any time.		DATE 3-23-68 DATE 3/25/68 DATE 3-22-68 DATE 3-12-68		SIZE A CODE IDENT. NO. 82679 DWG NO. MS 5382 ISSUE Ø		
SCALE 1:1		SHEET		OF		

APPLICATION			REVISIONS						
QTY	MODEL USED ON	ASS'Y NO.	LTR	DESCRIPTION	DATE	E.M.N.NO	DRAFT	CHKD	APPD
1	LPA-2		X	EXP. RELEASE	3/19/68	#	Eng	MM	E.P.
			Ø	ORIG. RELEASE FOR PROD.	5-29-68		R.G.		J.H.S.

HOLE	DESCRIPTION	REQ.
A	9/32 DIA.	1
B	15/64 DIA.	1



MARK TMC P/N (MS 5385)
 1/8 HIGH GOTHIC W/LATEST
 REV. LETTER ON REAR

UNLESS OTHERWISE SPECIFIED:

1. USE MATERIAL THICKNESS FOR MAXIMUM RADIUS ON ALL BENDS
2. ALL ANGULAR BENDS 90 DEGREES
3. REMOVE ALL BURRS AND SHARP EDGES

UNLESS OTHERWISE SPECIFIED
 DIMENSIONS ARE IN INCHES
 AND INCLUDE CHEMICALLY APPLIED
 OR PLATED FINISHES

DECIMALS	FRACTIONS	TOLS.	ANGLES
.X ± .05	1/64		
.XX ± .01			0° - 30'
.XXX ± .005			

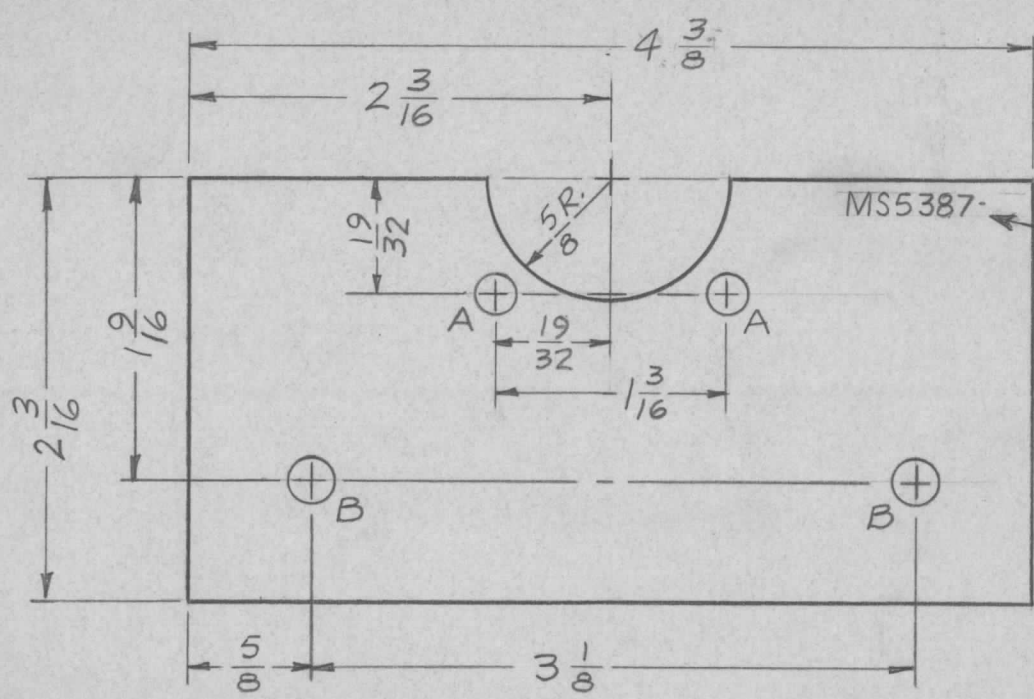
MATERIAL .051 THK.
 ALUMINUM 5052-H32
 FINISH S404
 YELLOW IRIDITE
 S401-951

REQ'D	ITEM	PART NUMBER	DESCRIPTION	SYM.
			LIST OF MATERIAL	
			THE TECHNICAL MATERIEL CORP.	
			MAMARONECK, NEW YORK	
			BRACKET, MTG. COIL	

SIZE	CODE IDENT. NO.	DWG NO.	ISSUE
A	82679	MS 5385	Ø
SCALE		SHEET	OF

NOTICE TO PERSONS RECEIVING THIS DRAWING
 THE TECHNICAL MATERIEL CORPORATION claims proprietary right in the material disclosed hereon. This drawing is issued in confidence for engineering information only and may not be reproduced or used to manufacture anything shown hereon without permission from THE TECHNICAL MATERIEL CORPORATION to the user. This drawing is loaned for mutual assistance and is subject to recall at any time.

APPLICATION			REVISIONS						
QTY	MODEL USED ON	ASS'Y NO.	LTR	DESCRIPTION	DATE	E.M.N.NO	DRAFT	CHKD	APPD
2	RAK-III-2	BMA 158	X	EXP. RELEASE	3/26/68	-	H.S.		
			Ø	ORIG. RELEASE FOR PROD.	3-27-68	Ø	R.G.		

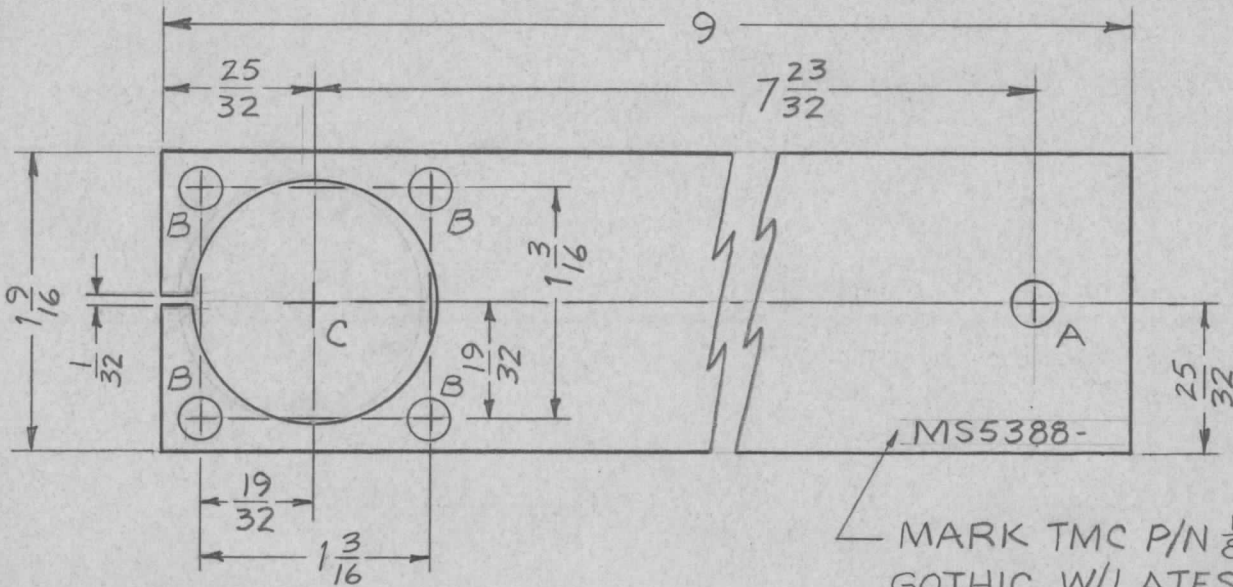


HOLES	DESCRIPTION	REQ
A	13/64 DIA.	2
B	15/64 DIA.	2

UNLESS OTHERWISE SPECIFIED DIMENSIONS ARE IN INCHES AND INCLUDE CHEMICALLY APPLIED OR PLATED FINISHES		REQ'D	ITEM	PART NUMBER	DESCRIPTION	SYM.
DECIMALS .X ± .05 .XX ± .01 .XXX ± .005		F. BUDETTI LIST OF MATERIAL				
FRACTIONS 1/64 ANGLES 0° - 30'		THE TECHNICAL MATERIEL CORP. MAMARONECK, NEW YORK				
MATERIAL 0.01 THK ALUMINUM 5052-H32	MECH. DES.	A. P. P. P.	DATE	3-26-68	PLATE, MTG, DIRECTIONAL COUPLER	
FINISH S520 TEX. VINYL PAINT	ELECT. DES.	R. L. L.	DATE	3-26-68		
S401-451	CHECKED		DATE	3-26-68		
	DRAWN	H.S.	DATE	3/26/68		

NOTICE TO PERSONS RECEIVING THIS DRAWING THE TECHNICAL MATERIEL CORPORATION claims proprietary right in the material disclosed hereon. This drawing is issued in confidence for engineering information only and may not be reproduced or used to manufacture anything shown hereon without permission from THE TECHNICAL MATERIEL CORPORATION to the user. This drawing is loaned for mutual assistance and is subject to recall at any time.				SIZE A	CODE IDENT. NO. 82679	DWG NO. MS5387	ISSUE Ø
SCALE 1:1			SHEET		OF		

APPLICATION			REVISIONS							
QTY	MODEL USED ON	ASS'Y NO.	LTR	DESCRIPTION	DATE	E.M.N.NO	DRAFT	CHKD	APPD	
1	RAK-III-2	BMA 158	X	EXP. RELEASE	3/26/68	+	H.S.			
			Ø	ORIG. RELEASE FOR PROD.	3-27-68	Ø	R.G.			

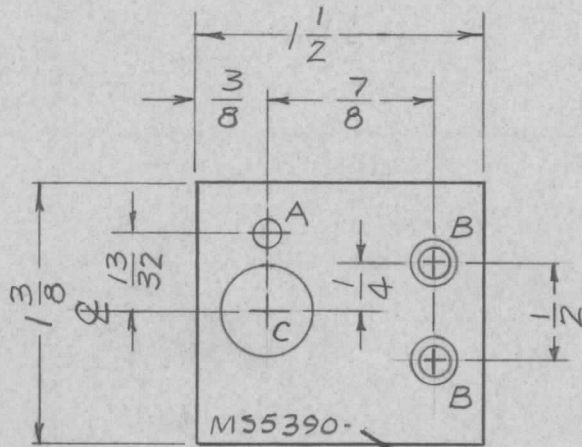


MARK TMC P/N $\frac{1}{8}$ HIGH
GOTHIC W/LATEST REV.
LETTER

HOLES	DESCRIPTION	REQ
A	15/64 DIA.	1
B	13/64 DIA.	4
C	1-1/4 DIA.	1

UNLESS OTHERWISE SPECIFIED DIMENSIONS ARE IN INCHES AND INCLUDE CHEMICALLY APPLIED OR PLATED FINISHES		REQ'D	ITEM	PART NUMBER	DESCRIPTION	SYM.	
DECIMALS .X ± .05 .XX ± .01 .XXX ± .005		F. BUDETTI		LIST OF MATERIAL			
FRACTIONS 1/64 ANGLES 0°-30'		FINAL APPROVAL	DATE	THE TECHNICAL MATERIEL CORP. MAMARONECK, NEW YORK			
MATERIAL .015 THK HOT ROLLED COPPER		MECH. DES.	DATE	STRAP, GRD, OUTPUT			
FINISH NONE		ELECT. DES.	DATE				
S401-451		CHECKED	DATE				
		DRAWN	DATE				
NOTICE TO PERSONS RECEIVING THIS DRAWING THE TECHNICAL MATERIEL CORPORATION claims proprietary right in the material disclosed hereon. This drawing is issued in confidence for engineering information only and may not be reproduced or used to manufacture anything shown hereon without permission from THE TECHNICAL MATERIEL CORPORATION to the user. This drawing is loaned for mutual assistance and is subject to recall at any time.				SIZE A	CODE IDENT. NO. 82679	DWG NO. MS5388	ISSUE Ø
				SCALE 1:1	SHEET OF		

APPLICATION			REVISIONS						
QTY	MODEL USED ON	ASS'Y NO.	LTR	DESCRIPTION	DATE	E.M.N.NO	DRAFT	CHKD	APPD
1	SME-G		X	EXP. RELEASE	3/29/68	+	H.S.		
			Ø	ORIG. RELEASE FOR PROD.	4-18-68		R.G.		J.D.



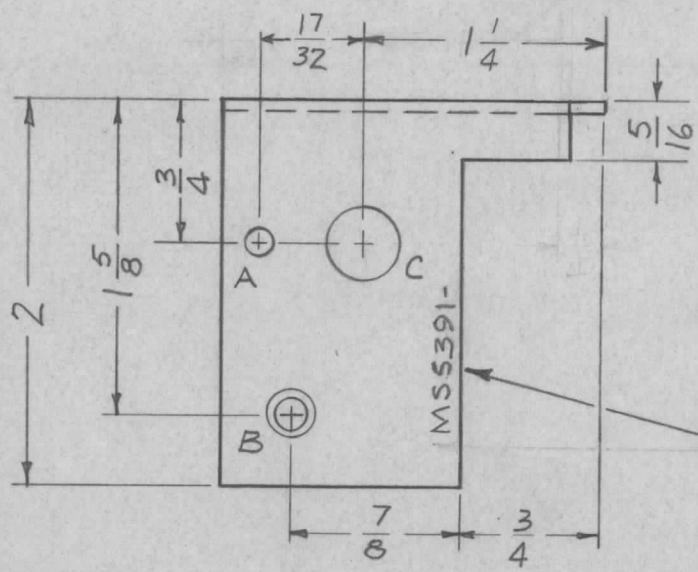
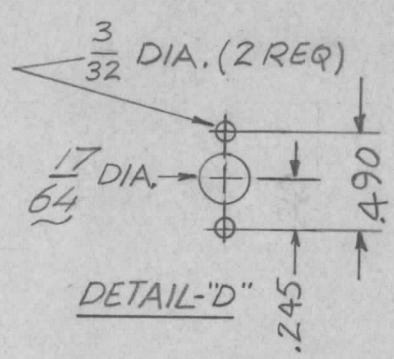
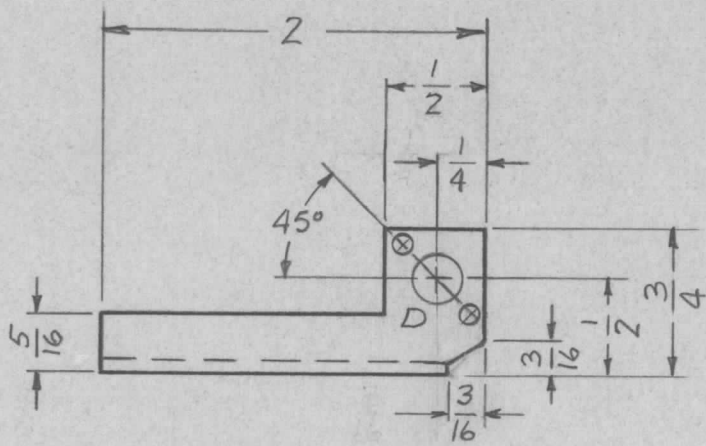
HOLE	DESCRIPTION	REQ
A	9/64 DIA	1
B	DR. 1/4 DIA. C'SINK 82° TO .284 DIA.	2
C	15/32 DIA	1

NOTE:
BREAK ALL EDGES
& SHARP CORNERS

MARK TMC P/N $\frac{1}{8}$ HIGH
GOTHIC W/LATEST REV.
LETTER

UNLESS OTHERWISE SPECIFIED DIMENSIONS ARE IN INCHES AND INCLUDE CHEMICALLY APPLIED OR PLATED FINISHES		REQ'D	ITEM	PART NUMBER	DESCRIPTION	SYM.
DECIMALS .X ± .05 .XX ± .01 .XXX ± .005		O. POSE		LIST OF MATERIAL		SK 3270-000
FRACTIONS 1/64 ANGLES 0° - 30'		FINAL APPROVAL	DATE	THE TECHNICAL MATERIEL CORP. MAMARONECK, NEW YORK		
MATERIAL .062 THK ALUMINUM 5052-H32		MECH. DES.	DATE	PLATE, MTG, CABLE CLAMP		
FINISH S404		ELECT. DES.	DATE			
YEL IDIRITE		CHECKED	DATE			
S401-451		DRAWN	DATE			
NOTICE TO PERSONS RECEIVING THIS DRAWING THE TECHNICAL MATERIEL CORPORATION claims proprietary right in the material disclosed hereon. This drawing is issued in confidence for engineering information only and may not be reproduced or used to manufacture anything shown hereon without permission from THE TECHNICAL MATERIEL CORPORATION to the user. This drawing is loaned for mutual assistance and is subject to recall at any time.				SIZE	CODE IDENT. NO.	DWG NO.
				A	82679	MS5390
				SCALE 1:1	SHEET OF	
						ISSUE Ø

APPLICATION			REVISIONS							
QTY	MODEL USED ON	ASS'Y NO.	LTR	DESCRIPTION	DATE	E.M.N.NO	DRAFT	CHKD	APPD	
1	SME-6		X	EXP. RELEASE	4-1-68	+				
			Ø	ORIG. RELEASE FOR PROD.	4-18-68			R.G.		
			A	CHG. DIA. FR 1/4 TO 17/64 (DET. D)	7-1-70	19918	GE			



HOLE	DESCRIPTION	REQ
A	9/64 DIA.	1
B	DR. 144 DIA. C'SINK 82° TO .284 DIA.	1
C	3/8 DIA.	1
D	SEE DETAIL	1

MARK TMC P/N 1/8 HIGH
GOTHIC W/LATEST REV
LETTER SHARP CORNER

NOTE: TMC P/N 1/8 HIGH
BREAK ALL EDGES
& SHARP CORNERS

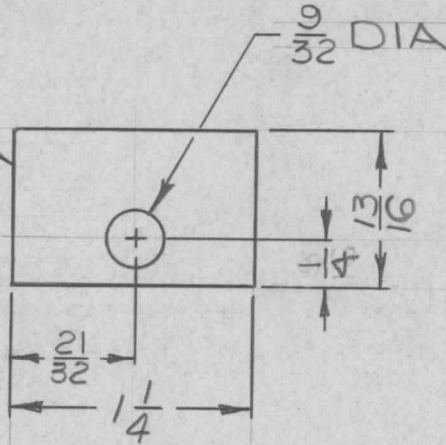
UNLESS OTHERWISE SPECIFIED DIMENSIONS ARE IN INCHES AND INCLUDE CHEMICALLY APPLIED OR PLATED FINISHES		REQ'D	ITEM	PART NUMBER	DESCRIPTION	SYM.
DECIMALS .X ± .05 .XX ± .01 .XXX ± .005		O. POSE		LIST OF MATERIAL		SK 3270-000
FRACTIONS TOLS. 1/64 ANGLES 0°-30'		FINAL APPROVAL		DATE		
MATERIAL .062 THK. ALUMINUM 5052-H32		MECH. DES.		DATE		
FINISH S404 YEL IDIRITE		ELECT. DES.		DATE		
S401-451		CHECKED		DATE		
		DRAWN		DATE		
THE TECHNICAL MATERIEL CORP. MAMARONECK, NEW YORK BRACKET, MTG, ADJ. RESISTOR						

NOTICE TO PERSONS RECEIVING THIS DRAWING
THE TECHNICAL MATERIEL CORPORATION claims proprietary right in the material disclosed hereon. This drawing is issued in confidence for engineering information only and may not be reproduced or used to manufacture anything shown hereon without permission from THE TECHNICAL MATERIEL CORPORATION to the user. This drawing is loaned for mutual assistance and is subject to recall at any time.

SIZE	CODE IDENT. NO.	DWG NO.	ISSUE
A	82679	MS5391	A
SCALE	1:1	SHEET	OF

APPLICATION			REVISIONS						
QTY	MODEL USED ON	ASS'Y NO.	LTR	DESCRIPTION	DATE	E.M.N.NO	DRAFT	CHKD	APPD
1	KIT-354		X	EXP. RELEASE	4-11-68				
			Ø	ORIGINAL RELEASE	4/16/68	Ø	JW	JA	JD

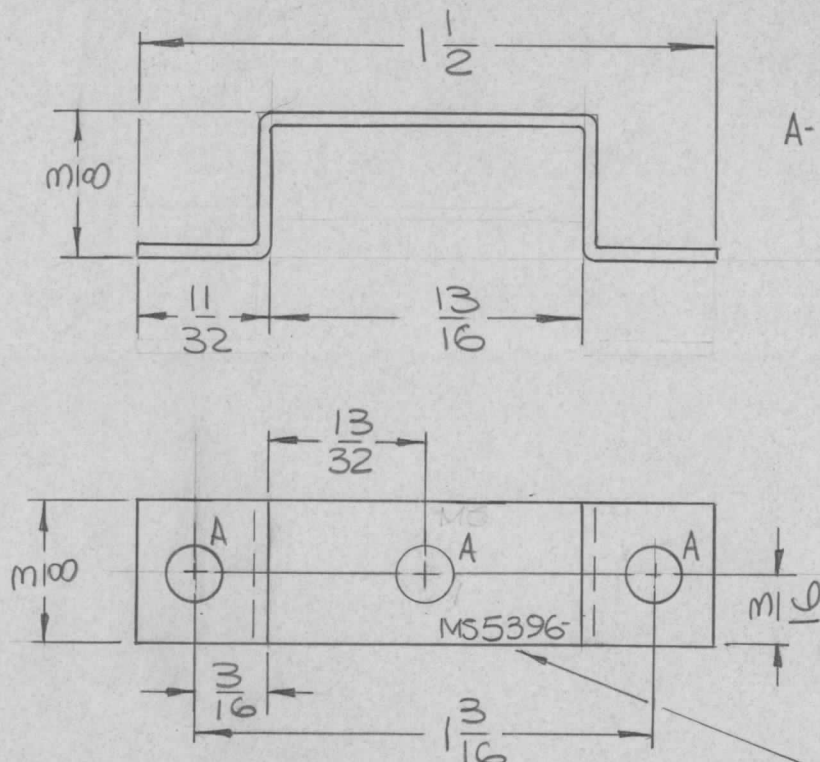
MARK TMC P/N
 1/8 HIGH GOTHIC
 W/LATEST REV
 LETTER (ON REAR)



REF. LD2315

UNLESS OTHERWISE SPECIFIED DIMENSIONS ARE IN INCHES AND INCLUDE CHEMICALLY APPLIED OR PLATED FINISHES		REQ'D	ITEM	PART NUMBER	DESCRIPTION	SYM.
LIST OF MATERIAL						
DECIMALS: .X ± .05, .XX ± .01, .XXX ± .005 FRACTIONS: 1/64, 1/32, 1/16, 1/8, 1/4, 1/2, 3/4, 1 TOLS. ANGLS: 0° - 30'		FINAL APPROVAL: <i>[Signature]</i> DATE: 4-16-68		THE TECHNICAL MATERIEL CORP. MAMARONECK, NEW YORK		
MATERIAL: .016 THK ALUMI 5052 H-32 FINISH: S115 TMC GREY 970		MECH. DES.: <i>[Signature]</i> DATE: 4-16-68		PLATE, DESIGNATION		
		ELECT. DES.: DATE:				
		CHECKED: <i>[Signature]</i> DATE: 4-16-68				
		DRAWN: <i>[Signature]</i> DATE: 4-11-68				
NOTICE TO PERSONS RECEIVING THIS DRAWING THE TECHNICAL MATERIEL CORPORATION claims proprietary right in the material disclosed hereon. This drawing is issued in confidence for engineering information only and may not be reproduced or used to manufacture anything shown hereon without permission from THE TECHNICAL MATERIEL CORPORATION to the user. This drawing is loaned for mutual assistance and is subject to recall at any time.				SIZE: A	CODE IDENT. NO.: 82679	DWG NO.: MS 5393
				SCALE: 1:1	SHEET:	OF:

APPLICATION			REVISIONS						
QTY	MODEL USED ON	ASS'Y NO.	LTR	DESCRIPTION	DATE	E.M.N.NO	DRAFT	CHKD	APPD
1	HFRR-4		X	EXP. RELEASE	5-29-68				
				ORIG. RELEASE FOR PROD.	11-6-68	Ø	R.G.		



HOLES:
A- $\frac{9}{64}$ DIA (3REQ.)

- UNLESS OTHERWISE SPECIFIED:
- 1- USE MATERIAL THICKNESS FOR MAXIMUM RADIUS ON ALL BENDS.
 - 2- ALL ANGULAR BENDS 90°.
 - 3- REMOVE ALL BURRS & SHARP EDGES.

MARK TMC P/N $\frac{1}{8}$ HIGH GOTHIC W/LATEST REV. LETTER.

UNLESS OTHERWISE SPECIFIED DIMENSIONS ARE IN INCHES AND INCLUDE CHEMICALLY APPLIED OR PLATED FINISHES		REQ'D	ITEM	PART NUMBER	DESCRIPTION	SYM.
DECIMALS .X ± .05 .XX ± .01 .XXX ± .005		FRACTIONS 1/64 ANGLES 0° - 30'		M. ZETENA	LIST OF MATERIAL SK3252-003-56	
MATERIAL .031 THK ALUMINUM 5052-H32		FINAL APPROVAL	DATE	THE TECHNICAL MATERIEL CORP. MAMARONECK, NEW YORK		
FINISH S404 YEL IRIDITE S401-451		MECH. DES.	DATE	BRACKET, MTG FILTER		
		ELECT. DES.	DATE			
		CHECKED	DATE			
		DRAWN	DATE			

NOTICE TO PERSONS RECEIVING THIS DRAWING THE TECHNICAL MATERIEL CORPORATION claims proprietary right in the material disclosed hereon. This drawing is issued in confidence for engineering information only and may not be reproduced or used to manufacture anything shown hereon without permission from THE TECHNICAL MATERIEL CORPORATION to the user. This drawing is loaned for mutual assistance and is subject to recall at any time.				SIZE A	CODE IDENT. NO. 82679	DWG NO. MS5396	ISSUE Ø
SCALE 2:1		SHEET OF					