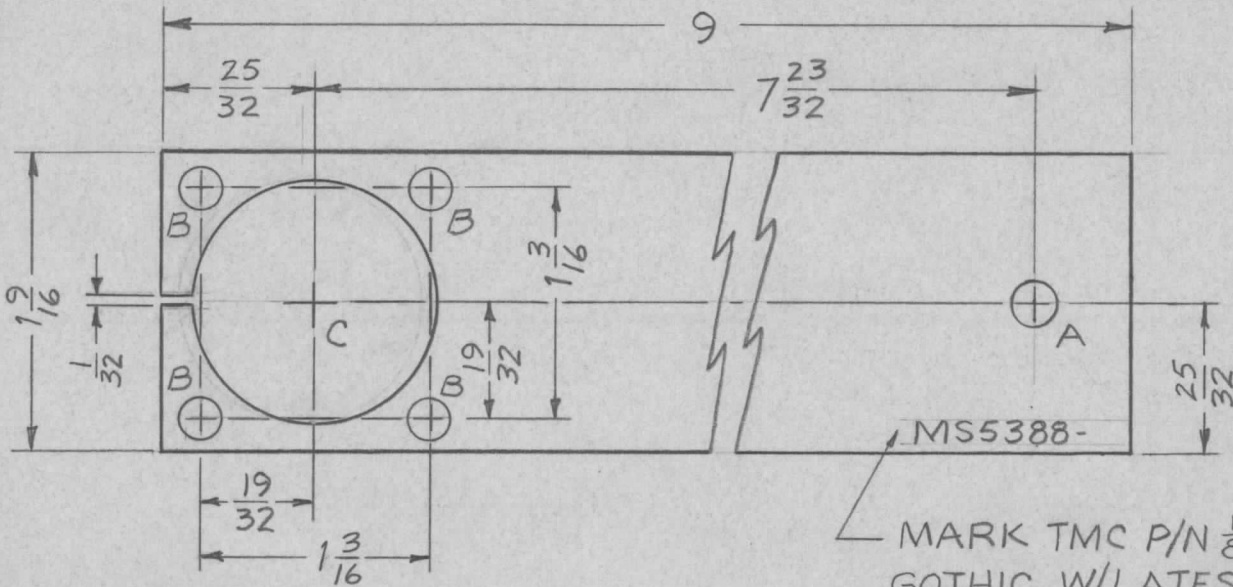


APPLICATION			REVISIONS							
QTY	MODEL USED ON	ASS'Y NO.	LTR	DESCRIPTION	DATE	E.M.N.NO	DRAFT	CHKD	APPD	
1	RAK-III-2	BMA 158	X	EXP. RELEASE	3/26/68	+	H.S.			
			Ø	ORIG. RELEASE FOR PROD.	3-27-68	Ø	R.G.			



MS5388-

MARK TMC P/N  $\frac{1}{8}$  HIGH  
GOTHIC W/LATEST REV.  
LETTER

HOLES	DESCRIPTION	REQ
A	15/64 DIA.	1
B	13/64 DIA.	4
C	1-1/4 DIA.	1

UNLESS OTHERWISE SPECIFIED DIMENSIONS ARE IN INCHES AND INCLUDE CHEMICALLY APPLIED OR PLATED FINISHES		REQ'D	ITEM	PART NUMBER	DESCRIPTION	SYM.
DECIMALS .X ± .05 .XX ± .01 .XXX ± .005		F. BUDETTI		LIST OF MATERIAL		
FRACTIONS 1/64 ANGLES 0° - 30'		FINAL APPROVAL	DATE	THE TECHNICAL MATERIEL CORP.		
MATERIAL .015 THK HOT ROLLED COPPER		MECH. DES.	DATE	MAMARONECK, NEW YORK		
FINISH NONE		ELECT. DES.	DATE	STRAP, GRD, OUTPUT		
S401-451		CHECKED	DATE			
		DRAWN	DATE			
NOTICE TO PERSONS RECEIVING THIS DRAWING THE TECHNICAL MATERIEL CORPORATION claims proprietary right in the material disclosed hereon. This drawing is issued in confidence for engineering information only and may not be reproduced or used to manufacture anything shown hereon without permission from THE TECHNICAL MATERIEL CORPORATION to the user. This drawing is loaned for mutual assistance and is subject to recall at any time.				SIZE A	CODE IDENT. NO. 82679	DWG NO. MS5388
				SCALE 1:1	SHEET OF	
						ISSUE Ø