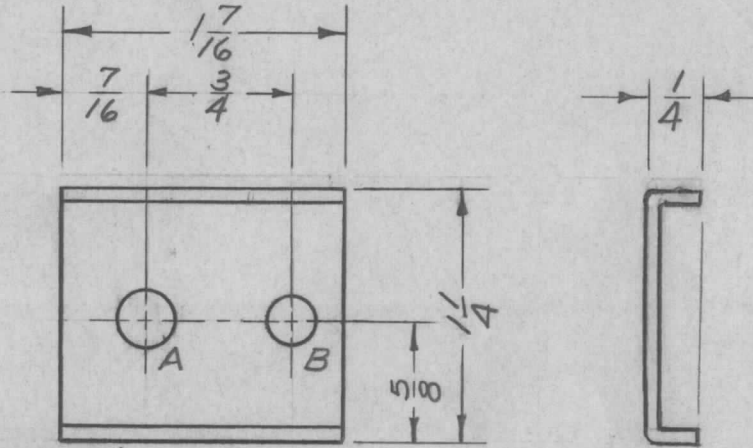


APPLICATION			REVISIONS						
QTY	MODEL USED ON	ASS'Y NO.	LTR	DESCRIPTION	DATE	E.M.N.NO	DRAFT	CHKD	APPD
1	LPA-2		X	EXP. RELEASE	3/19/68	#	Eng	MM	E.P.
			Ø	ORIG. RELEASE FOR PROD.	5-29-68		R.G.		J.H.S.

HOLE	DESCRIPTION	REQ.
A	9/32 DIA.	1
B	15/64 DIA.	1



MARK TMC P/N (MS 5385)
 1/8 HIGH GOTHIC W/LATEST
 REV. LETTER ON REAR

UNLESS OTHERWISE SPECIFIED:

1. USE MATERIAL THICKNESS FOR MAXIMUM RADIUS ON ALL BENDS
2. ALL ANGULAR BENDS 90 DEGREES
3. REMOVE ALL BURRS AND SHARP EDGES

UNLESS OTHERWISE SPECIFIED
 DIMENSIONS ARE IN INCHES
 AND INCLUDE CHEMICALLY APPLIED
 OR PLATED FINISHES

DECIMALS FRACTIONS
 .X ± .05 TOLS. 1/64
 .XX ± .01 ANGLES
 .XXX ± .005 0° - 30'

MATERIAL .051 THK.
 ALUMINUM 5052-H32

FINISH S404
 YELLOW IRIDITE

S401-951

REQ'D	ITEM	PART NUMBER	DESCRIPTION	SYM.
			LIST OF MATERIAL	
		F. BUDETTI	THE TECHNICAL MATERIEL CORP.	
			MAMARONECK, NEW YORK	
			BRACKET, MTG. COIL	

NOTICE TO PERSONS RECEIVING THIS DRAWING
 THE TECHNICAL MATERIEL CORPORATION claims proprietary right in the material
 disclosed hereon. This drawing is issued in confidence for engineering information only
 and may not be reproduced or used to manufacture anything shown hereon without
 permission from THE TECHNICAL MATERIEL CORPORATION to the user. This drawing is
 loaned for mutual assistance and is subject to recall at any time.

SIZE	CODE IDENT. NO.	DWG NO.	ISSUE
A	82679	MS 5385	Ø
SCALE		SHEET	OF