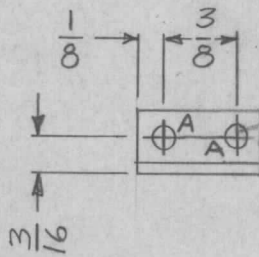
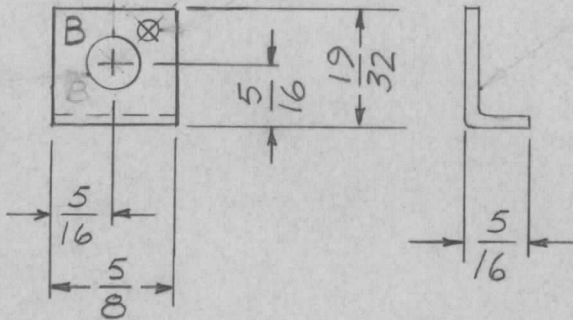


APPLICATION			REVISIONS						
QTY	MODEL USED ON	ASS'Y NO.	LTR	DESCRIPTION	DATE	E.M.N.NO	DRAFT	CHKD	APPD
1	SME(1)6	A4647	X	EXP. RELEASE	3-12-68	—	H.S.		
			Ø	ORIG RELEASE FOR PROD	3/25/68		C.V.		

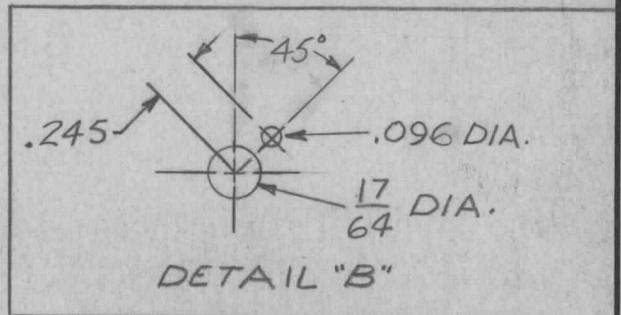


HOLE	DESCRIPTION	REQ
A	7/64 DIA.	2
B	SEE DETAIL	1



UNLESS OTHERWISE SPECIFIED:

1. USE MATERIAL THICKNESS FOR MAXIMUM RADIUS ON ALL BENDS.
2. ALL ANGULAR BENDS 90 DEGREES.
3. REMOVE ALL BURRS & SHARP EDGES.



UNLESS OTHERWISE SPECIFIED DIMENSIONS ARE IN INCHES AND INCLUDE CHEMICALLY APPLIED OR PLATED FINISHES		REQ'D	ITEM	PART NUMBER	DESCRIPTION	SYM.		
DECIMALS: .X ± .05, .XX ± .01, .XXX ± .005 FRACTIONS: 1/64, ANGLES: 0°-30'		O. POSE LIST OF MATERIAL						
MATERIAL .063 THICK ALUMINUM 5052-H32		FINAL APPROVAL <i>spm</i>		DATE 3-23-68	THE TECHNICAL MATERIEL CORP.			
FINISH S404 YEL IRIDITE		MECH. DES. <i>WAC</i>		DATE 3/25/68	MAMARONECK, NEW YORK			
S401-451		ELECT. DES.		DATE	BRACKET MTG, POTENTIOMETER			
		CHECKED <i>MS</i>		DATE 3-22-68				
		DRAWN <i>H.S.</i>		DATE 3-12-68				
NOTICE TO PERSONS RECEIVING THIS DRAWING THE TECHNICAL MATERIEL CORPORATION claims proprietary right in the material disclosed hereon. This drawing is issued in confidence for engineering information only and may not be reproduced or used to manufacture anything shown hereon without permission from THE TECHNICAL MATERIEL CORPORATION to the user. This drawing is loaned for mutual assistance and is subject to recall at any time.					SIZE A	CODE IDENT. NO. 82679	DWG NO. MS 5382	ISSUE Ø
					SCALE 1:1	SHEET OF		