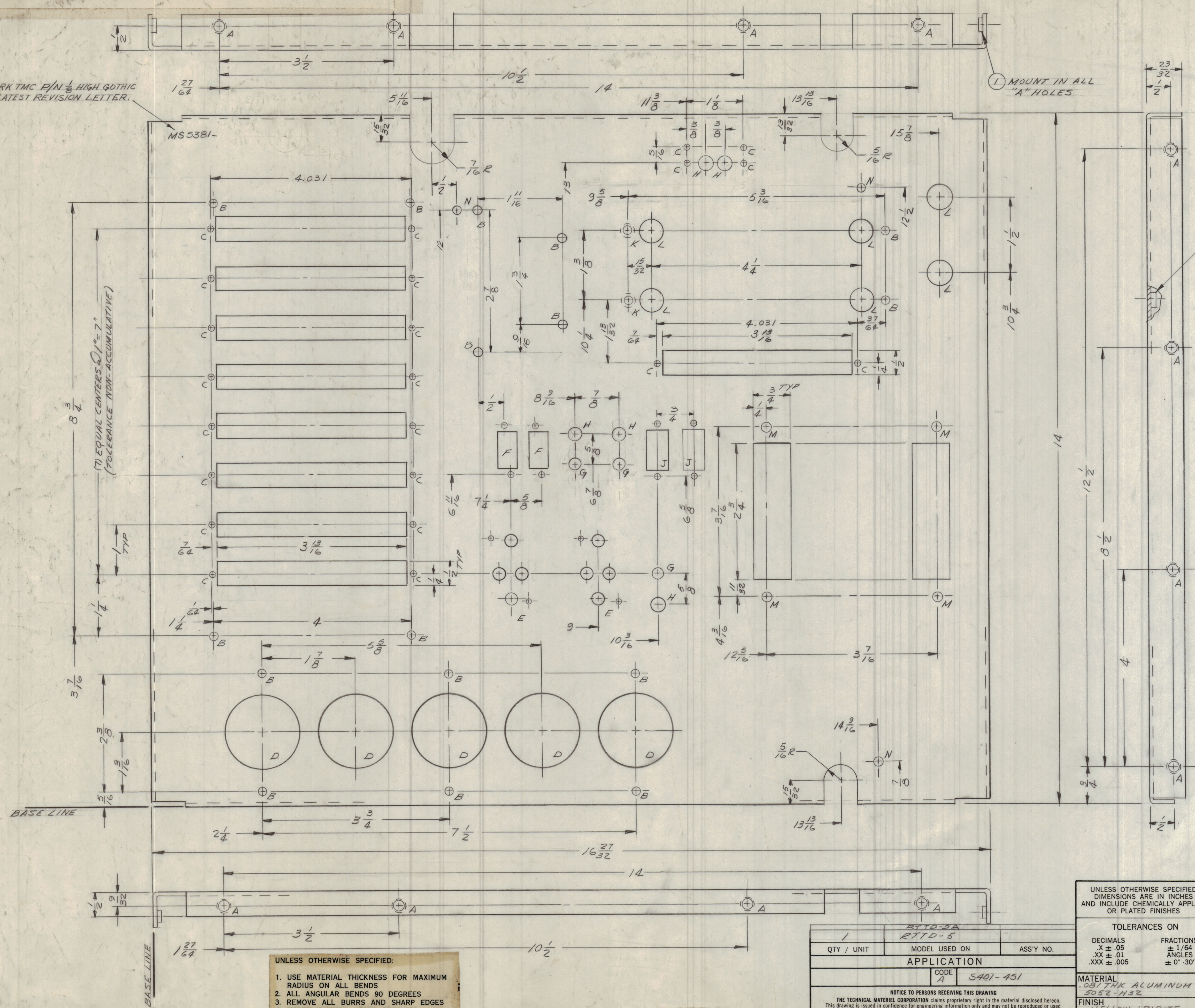
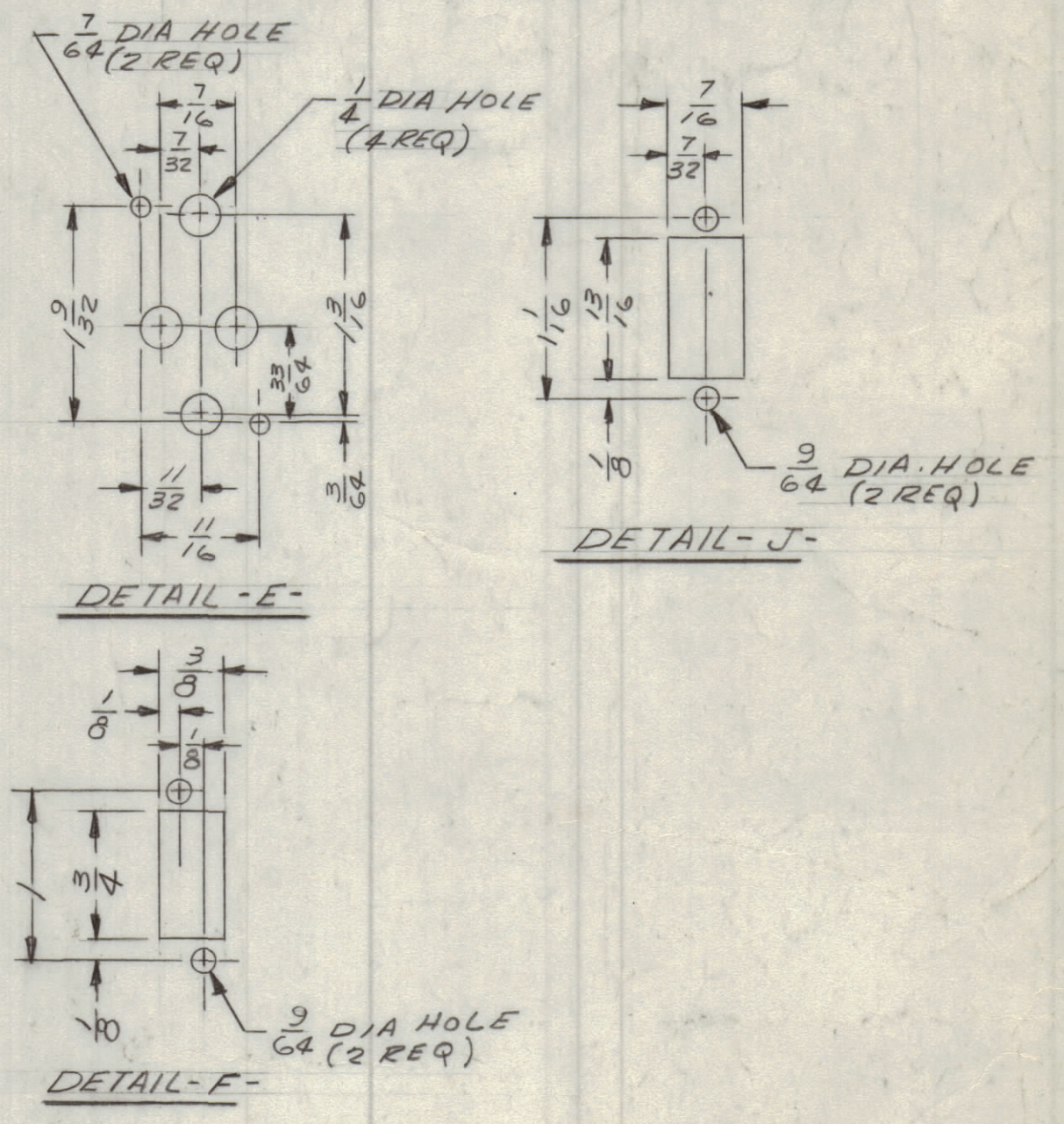


REVISIONS						
ZONE	LTR	DESCRIPTION	DATE	E.M.N.NO	DRAFT	CHKD APPD
X		EXP. RELEASE	2/1/68			
X		UPDATED FOR RTTD-5A	2/1/69		GE	
		ORIGINAL RELEASE FOR PRODUCTION	4/1/69		RG	

MARK TMC F/N $\frac{1}{8}$ HIGH GOTHIC W/LATEST REVISION LETTER.



HOLE LEGEND		
HOLE	DESCRIPTION	REQ
A	.221-.224 DIA	16
B	1/16 DIA	14
C	3/16 DIA	22
D	1/2 DIA	5
E	SEE DETAIL	2
F	SEE DETAIL	2
G	1/8 DIA	3
H	5/16 DIA	5
J	SEE DETAIL	2
K	.191-.194 DIA	2
L	1/2 DIA	6
M	1/32 DIA	4
N	13/64 DIA	3
P		



QTY.	REQ.	ITEM	PART NO.	DESCRIPTION	SYMBOL
2	2	NT129-632-4		NUT, PLAIN, SPLINE	K
16	1	NT129-832-4		NUT, PLAIN, SPLINE	A

M. ZETENA		LIST OF MATERIAL		5K3234-006-2	
THE TECHNICAL MATERIEL CORP. MAMARONECK, NEW YORK					
CHASSIS - MAIN					
SIZE	CODE IDENT. NO.	DWG. NO.		ISSUE	
D	82679	MS 5381			
SCALE					
SHEET OF					

- UNLESS OTHERWISE SPECIFIED:
- USE MATERIAL THICKNESS FOR MAXIMUM RADIUS ON ALL BENDS
 - ALL ANGULAR BENDS 90 DEGREES
 - REMOVE ALL BURRS AND SHARP EDGES
 - MOUNT INSERTS AFTER FINISHING

RTTD-5A		RTTD-5	
QTY / UNIT	MODEL USED ON	ASS'Y NO.	
APPLICATION			
CODE	S401-451		
MATERIAL 0.031 THK ALUMINUM 5052-H32			
FINISH YELLOW IRIDIOTE 5404			

TOLERANCES ON	
DECIMALS	FRACTIONS
.X ± .05	± 1/64
.XX ± .01	ANGLES
.XXX ± .005	± 0°-30'

NOTICE TO PERSONS RECEIVING THIS DRAWING
THE TECHNICAL MATERIEL CORPORATION claims proprietary right in the material disclosed herein. This drawing is issued in confidence for engineering information only and may not be reproduced or used to manufacture anything shown hereon without permission from THE TECHNICAL MATERIEL CORPORATION to the user. This drawing is loaned for mutual assistance and is subject to recall at any time.