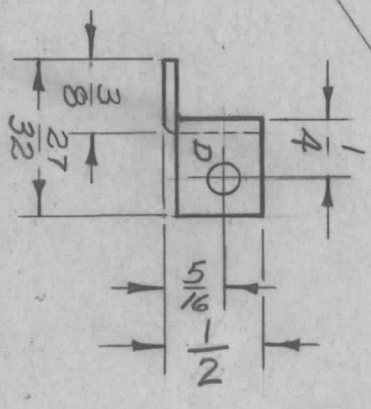
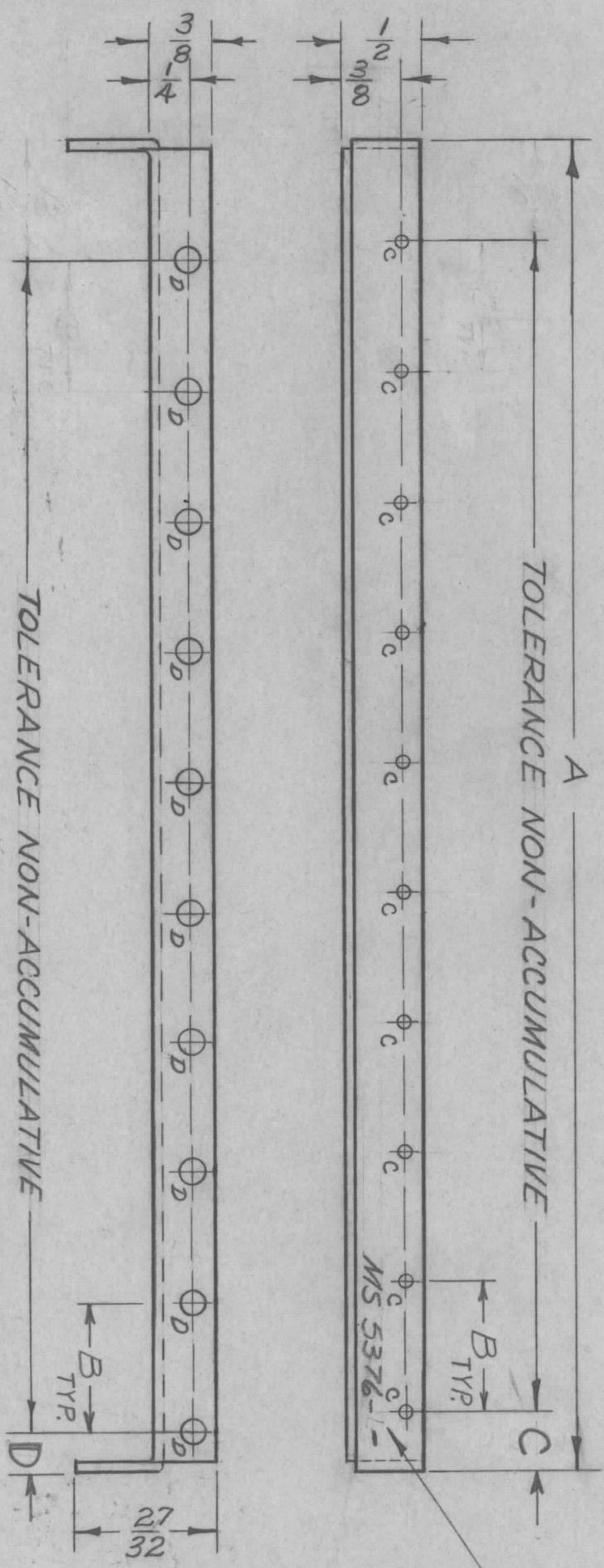


TMC P/N/O	A DIM	B DIM	C DIM	D DIM	HOLES				MODEL	REQ.
					C	REQ.	D	REQ.		
MS5376-1	10 1/4	1	3/8	1/4	.067	10	9/64	12	RTMU-41	1EA
MS5376-2	8 3/8	.812	3/8	1/4	.067	10	9/64	12	RTIH-3	1EA
MS5376-3	4 7/8	1	3/8	1/4	.067	5	9/64	7	RTPH-3	1EA
MS5376-4	11 1/16	.812	3/8	1/4	.067	14	9/64	16	RTTD-4	1EA
MS5376-5	8 1/4	1	3/8	1/4	.067	8	9/64	10	RTTD-5	1EA
MS5376-6	7 3/4	1.500	7/8	3/4	.067	5	9/64	5	RARY-1, RASH	1EA

REVISIONS						
ZONE	LTR	DESCRIPTION	DATE	E.M.N.NO	DRAFT	CHKD
	X	EXP RELEASE	3/6/68	#		
	X1	SIDE VIEW 7/16 STAND DIM C D ADDED	11-1-68	#		
	Ø	ORIG. RELEASE FOR PROD	11-20-68	Ø		
	A	27/32 WAS 25/32 (SIDE VIEW)	1/27-69	19254	GE	

MARK TMC P/N 1/8 HIGH
GOTHIC W/LATEST REV. LETTER.

CODE	DESCRIPTION
L	LEFT BOTTOM SECTION AS SHOWN
R	RIGHT BOTTOM SECTION OPPOSITE HAND



MS5376-1-L
TMC P/N CODE

OPPOSITE SIDE SAME

UNLESS OTHERWISE SPECIFIED
1. USE MATERIAL THICKNESS FOR MAXIMUM RADIUS ON ALL BENDS.
2. ALL ANGULAR BENDS 90 DEGREES.
3. REMOVE ALL BURRS AND SHARP EDGES.

QTY / UNIT	MODEL USED ON	ASS'Y NO.
SEE CHART	APPLICATION	
	CODE	S401-451

UNLESS OTHERWISE SPECIFIED DIMENSIONS ARE IN INCHES AND INCLUDE CHEMICALLY APPLIED OR PLATED FINISHES

DECIMALS: .X ± .05, .XX ± .01, .XXX ± .005
FRACTIONS: 1/64, ANGLES: 0°-30°

MATERIAL: .051 THK. ALUMINIUM
FINISH: S404 YELLOW IRIDITE

REQ'D ITEM	PART NUMBER	DESCRIPTION	SYM.
F. EATON		LIST OF MATERIAL SK 3234-006-6	
FINAL APPROVAL	DATE	THE TECHNICAL MATERIEL CORP. MAMARONECK, NEW YORK	
MECH. DES.	DATE	ANGLE SUPPORT CARD BIN BOTTOM SECTION	
ELECT. DES.	DATE	SIZE	ISSUE
CHECKED	DATE	B 82679	A
DRAWN	DATE	CODE IDENT. NO.	DWG NO.
		MS 5376	
		SCALE	SHEET
			OF