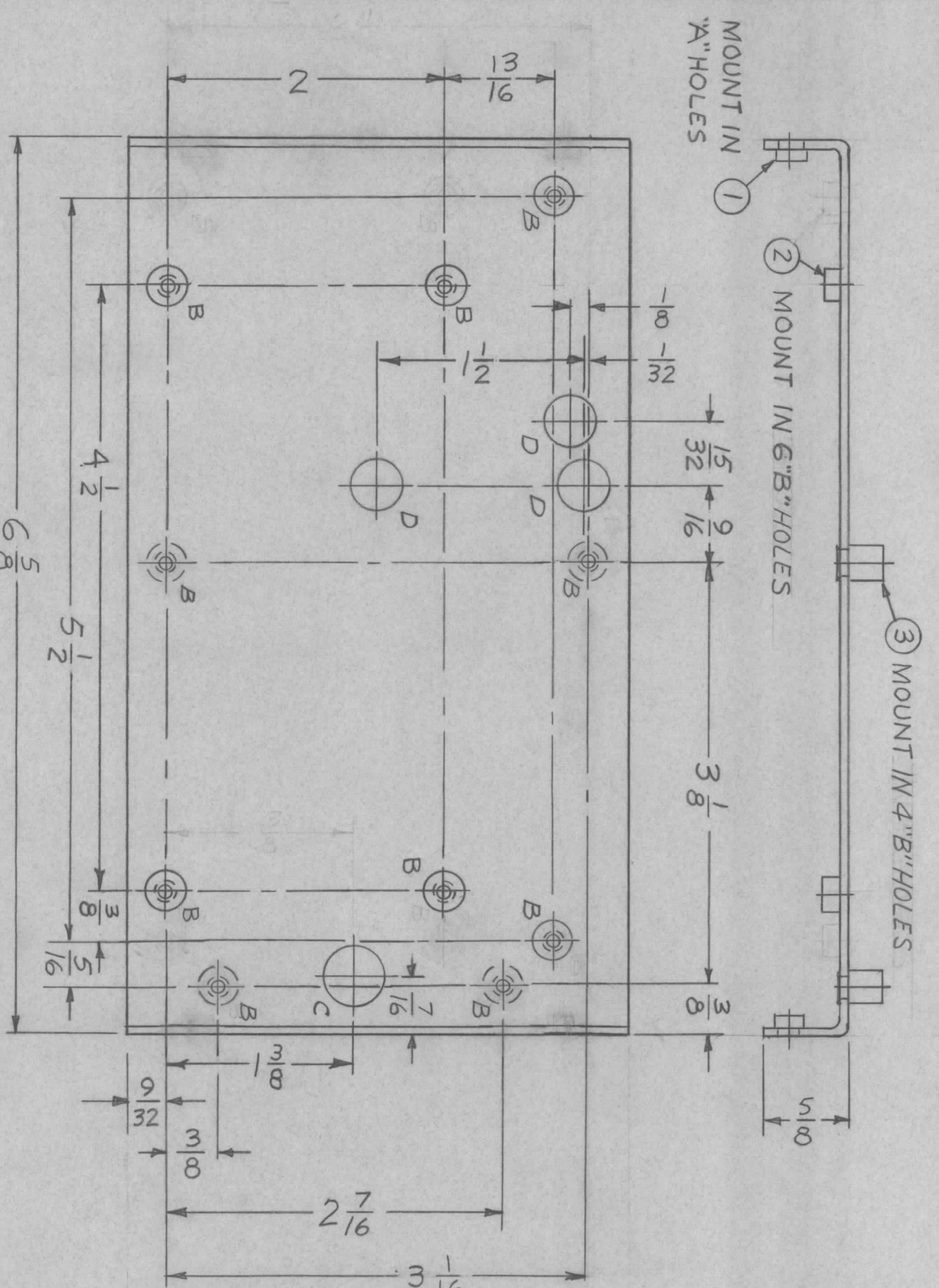


REVISIONS

ZONE	LTR	DESCRIPTION	DATE	E.M.N.NO	DRAFT	CHKD	APPD
X		EXP. RELEASE	3.5.68	-			
Ø		ORIG. RELEASE FOR PROD	3-14-68	Ø	R.G.		
A		MOVED 4 B HOLES	1-6-70	19696	KD		



HOLE	DESCRIPTION	REQ
A	.161-.164 DIA.	4
B	.189 DIA.	10
C	7/16 DIA.	1
D	3/8 DIA.	3

MARK TMC P/N 1/8" HIGH
GOTHIC W/LATEST REV.
LETTER

OPPOSITE SIDE IDENTICAL

REQ'D ITEM	PART NUMBER	DESCRIPTION	SYM.
4	TE164-1	NUT, PLAIN, CLINCH	B
6	TE164-6	NUT, PLAIN, CLINCH	B
4	NT129-440-4	NUT, PLAIN, SPLINE	A

REF: MS5370

THE TECHNICAL MATERIEL CORP.
MAMARONECK, NEW YORK

PLATE, MTG, P/C BD

QTY / UNIT	1	MODEL USED ON	CHG()-4	ASS'Y NO.	
APPLICATION		CODE	A	S401-451	

- UNLESS OTHERWISE SPECIFIED
1. USE MATERIAL THICKNESS FOR MAXIMUM RADIUS ON ALL BENDS
 2. ALL ANGULAR BENDS 90 DEGREES
 3. REMOVE ALL BURRS & SHARP EDGES
 4. MOUNT INSERTS AFTER FINISHING.

NOTICE TO PERSONS RECEIVING THIS DRAWING
THE TECHNICAL MATERIEL CORPORATION claims proprietary right in the material disclosed hereon. This drawing is issued in confidence for engineering information only and may not be reproduced, or used to manufacture anything shown hereon without permission from THE TECHNICAL MATERIEL CORPORATION to the user. This drawing is loaned for mutual assistance and is subject to recall at any time.

DECIMALS	X ± .05	TOLS.	FRACTIONS	1/64
	.XX ± .01		ANGLES	0° .30'
	.XXX ± .005			
MATERIAL .063 THICK				
ALUMINUM 5052-H32				
FINISH S404 YEL				
IRIDITE				

FINAL APPROVAL	DATE	3-11-68
MECH. DES.	DATE	3-13-68
ELECT. DES.	DATE	
CHECKED	DATE	3-16-68
DRAWN	DATE	3-5-68

SIZE	B	CODE IDENT. NO.	82679	DWG NO.	MS 5369	ISSUE	A
SCALE						SHEET	OF