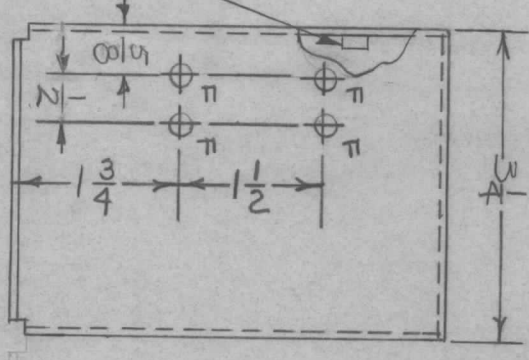
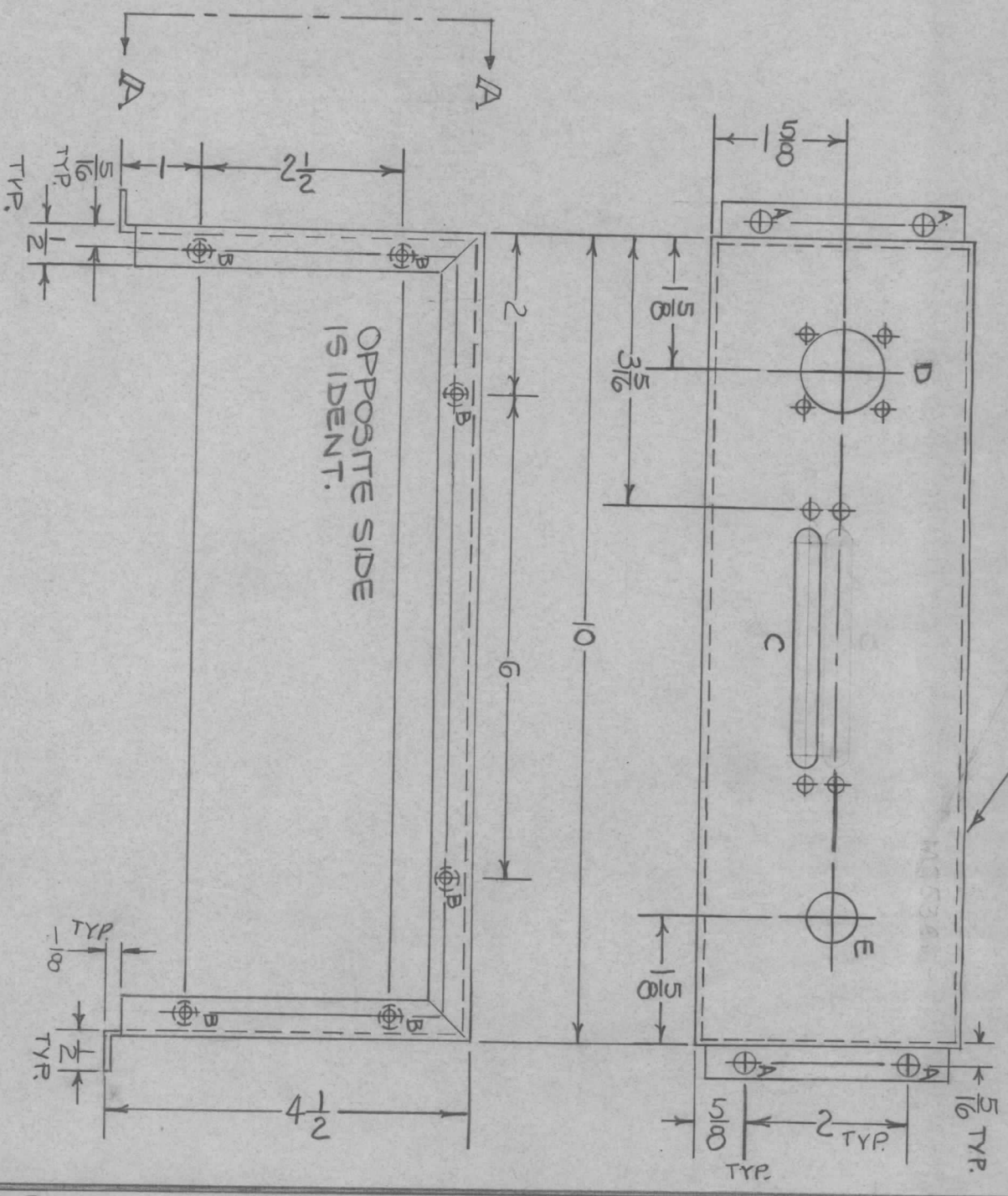


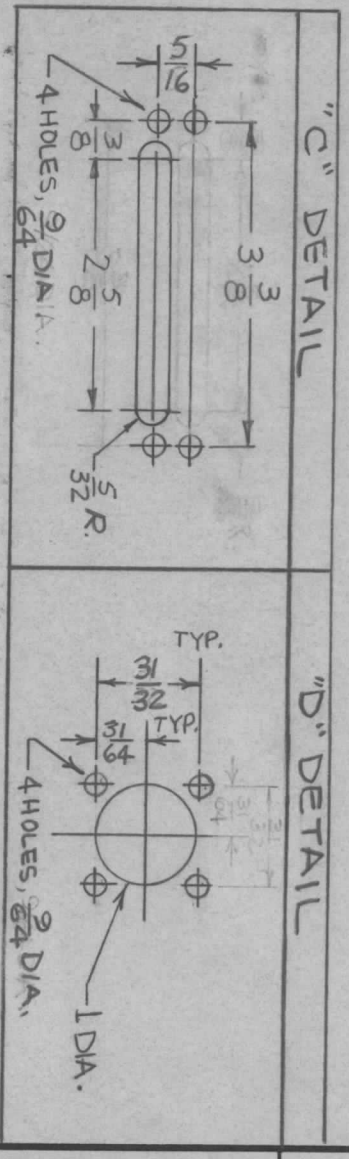
MARK TMC P/N(MS5366)  $\frac{1}{8}$ " HIGH GOTHIC  
W/LATEST REV. LETTER, ON INSIDE.



① MOUNT ITEM 1 IN ALL "B" HOLES AS SHOWN

VIEW A-A

REVISIONS		DATE	E.M.N. NO.	DRAFT	CHKD	APPD
ZONE	LTR	DESCRIPTION	DATE	E.M.N. NO.	DRAFT	CHKD
X		EXP. RELEASE	2-68			
Ø		ORIG. RELEASE FOR PROD	2-13-69	Ø	RG	



HOLE	DESCRIPTION	REQ.
A	13/64 DIA.	4
B	.191 ~ .194 DIA.	12
C	SEE DETAIL	1
D	SEE DETAIL	1
E	5/8 DIA.	1
F	9/64 DIA.	4

REF: LD2306

REQ'D ITEM	PART NUMBER	DESCRIPTION	SYM.
12	1	NT129-632-4	NUT, PLAIN, SPLINE
			B

F. BUDETTI		LIST OF MATERIAL	
FINAL APPROVAL	DATE	THE TECHNICAL MATERIEL CORP.	
MECH. DES. A. COGGIA	2-68	MAMARONECK, NEW YORK	
ELECT. DES. S. ROZZO	DATE	CHASSIS, WRAPAROUND	
CHECKED	DATE		
DRAWN ALPETROVA	2-68		
	2-68		

QTY / UNIT	MODEL USED ON	ASS'Y NO.
1	AX5031 (KIT-321)	
APPLICATION		
	CODE A	S401-451

UNLESS OTHERWISE SPECIFIED DIMENSIONS ARE IN INCHES AND INCLUDE CHEMICALLY APPLIED OR PLATED FINISHES

DECIMALS: X ± .05, .XX ± .01, .XXX ± .005

FRACTIONS: 1/64, ANGLES: 0° - 30'

MATERIAL: .063 THICK ALUMINUM 5052-H32

FINISH: S404-YEL. IRIDITE

- UNLESS OTHERWISE SPECIFIED
1. USE MATERIAL THICKNESS FOR MAXIMUM RADIUS ON ALL BENDS
  2. ALL ANGULAR BENDS 90 DEGREES
  3. REMOVE ALL BURRS & SHARP EDGES
  4. MOUNT INSERTS AFTER FINISHING