

4

3

2

1

REVISIONS						
ZONE	LTR	DESCRIPTION	DATE	E.M.N.NO	DRAFT	CHKD APPD
	X	EXP. RELEASE	2/15/68	-#	Emp	atb
	Ø	ORIG. RELEASE FOR PROD.	2-29-68		R.G.	Joe

HOLE	DESCRIPTION	REQ.
A	#50 DRILL (.070) DIA.	3
B	#47 DRILL (.0785) 3-48 TAP C'SINK 82° TO .224-.234	12
C	DR. 144 DIA. C'SINK 82° TO .281-.294 DIA.	12
D	13/16 DIA.	22
E	SEE DETAIL	11

MACHINING:

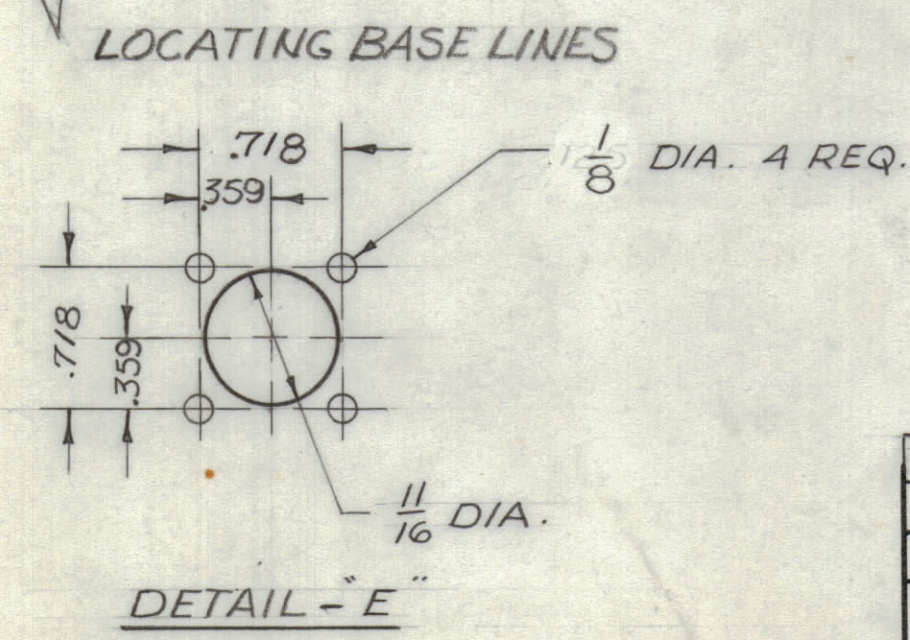
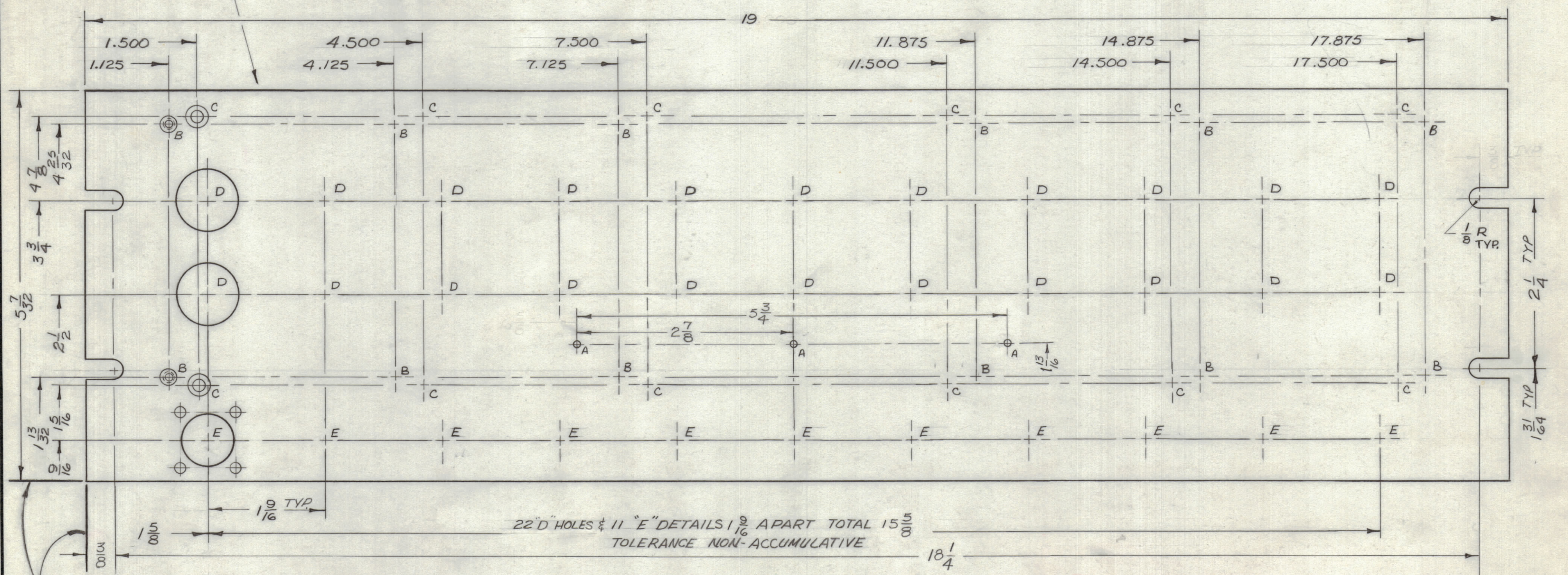
- MILL ALL EDGES.
- HOLES MUST BE DRILLED, UNLESS OTHERWISE SPECIFIED.
- LATERAL BOW OF PANEL MUST BE KEPT TO .031 TOLERANCE.
- PANEL MUST BE FREE OF ALL MACHINING MARKS, GOUGES AND SCRATCHES. IF NECESSARY, SAND FRONT OF PANEL WITH NO. 120 GRIT SANDPAPER.

FINISH NOTES:

- S404 - IRIDITE 14-2 AL-COAT.
- S114 - ZINC CHROMATE PRIMER } FRONT AND
- S115 - SMOOTH GRAY ENAMEL } EDGES ONLY

OR
PRIME AND PAINT PER CUSTOMER'S SPECIFICATIONS.

MARK TMC P/N (MS5364) 1/8 HIGH
GOTHIC W/LATEST REV. LETTER ON REAR



1	SPP-PA-130	
QTY / UNIT	MODEL USED ON	ASS'Y NO.
APPLICATION		
	CODE A	S401-451

NOTICE TO PERSONS RECEIVING THIS DRAWING
THE TECHNICAL MATERIEL CORPORATION claims proprietary right in the material disclosed hereon. This drawing is issued in confidence for engineering information only and may not be reproduced or used to manufacture anything shown hereon without permission from THE TECHNICAL MATERIEL CORPORATION to the user. This drawing is loaned for mutual assistance and is subject to recall at any time.

QTY. REQ.	ITEM	PART NO.	DESCRIPTION	SYMBOL
A. MARTINENGO LIST OF MATERIAL				
FINAL APPROVAL		DATE	THE TECHNICAL MATERIEL CORP.	
MECH. DES.		DATE	MAMARONECK, NEW YORK	
ELECT. DES.		DATE	PANEL, FRONT	
CHECKED		DATE		
DRAWN		DATE		
MATERIAL 3/16 THK. ALUMINUM 2024 T3			SIZE	CODE IDENT. NO.
FINISH SEE FINISH NOTES			C	82679
			DWG NO.	MS 5364
			SCALE 1:1	SHEET OF

4

3

2

1