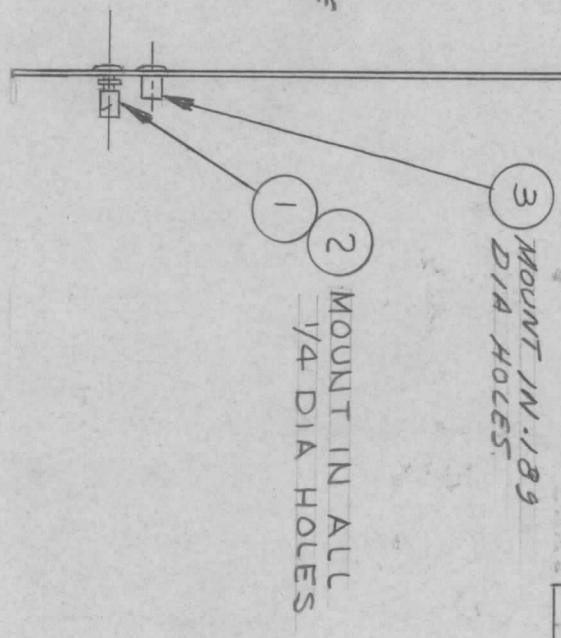
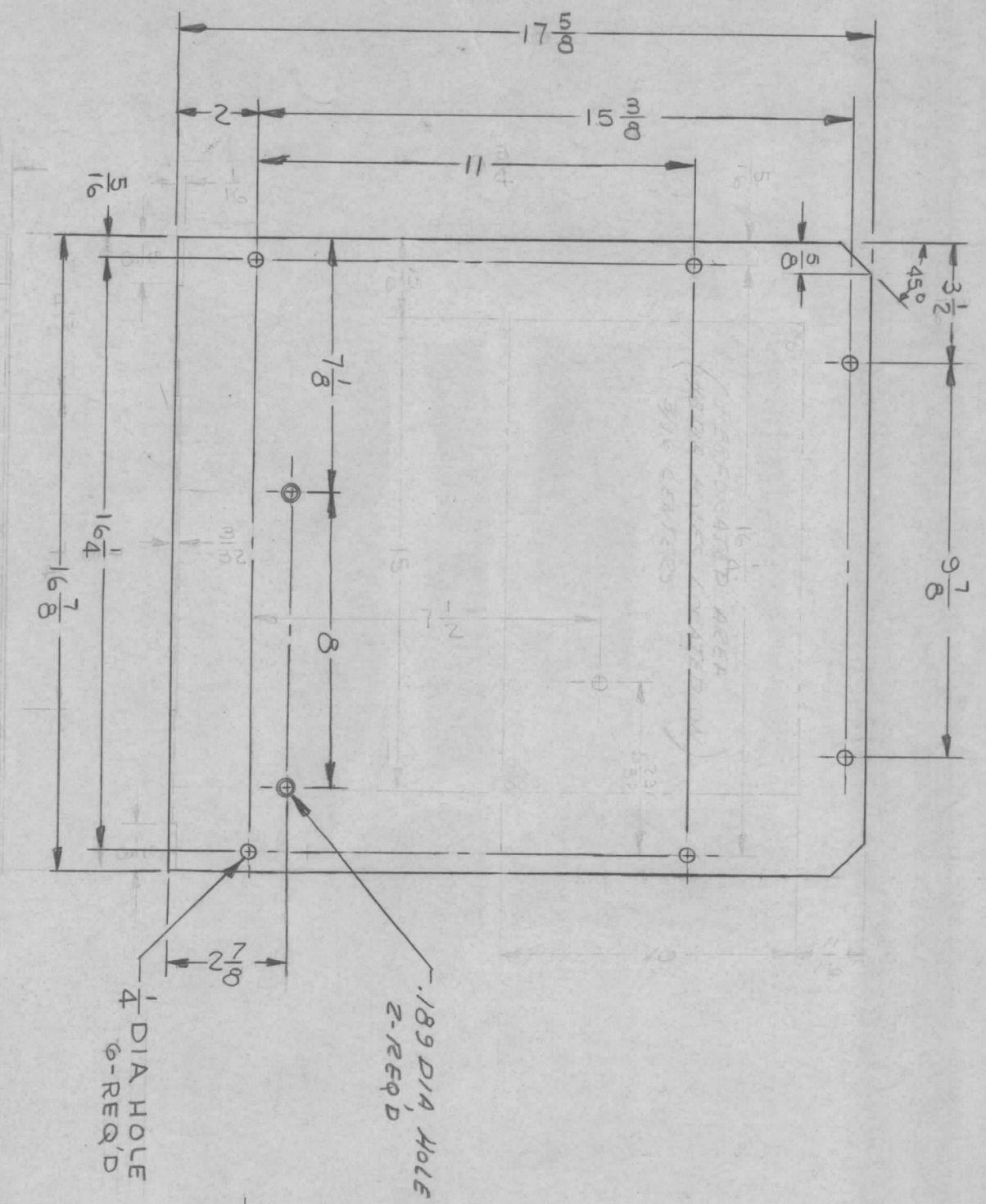


REVISIONS						
ZONE	LTR	DESCRIPTION	DATE	E.M.N. NO	DRAFT	CHKD
	X1	ADDED P.TS / #2	1/15/67		JL	
	X2	DELETED PERFORATED AREA	4/5/68		H2	
	Ø	ORIG. RELEASE FOR PROD	11-7-68		R.G.	

MSS345-1	AS SHOWN - BOTTOM COVER
MSS345-2	AS SHOWN WITHOUT ITEM-3 Ø.189 DIA HOLES - TOP COVER



MSS345-1 ONLY

REQ'D ITEM	PART NUMBER	DESCRIPTION	SYM.
2	TE108-1	NUT, PLAIN, CLINCH	
6	FS109-3	RING, RETAINING	
6	FS110-1	STUD, TURN LOCK	

LIST OF MATERIAL SK 3252-004-33
THE TECHNICAL MATERIEL CORP.
 MAMARONECK, NEW YORK

COVER, TOP & BOTTOM

QTY / UNIT	MODEL USED ON	ASSY NO.
1 EA	HFSR-4	
APPLICATION		
CODE	S401-451	
NOTICE TO PERSONS RECEIVING THIS DRAWING		
THE TECHNICAL MATERIEL CORPORATION claims proprietary right in the material disclosed hereon. This drawing is issued in confidence for engineering information only and may not be reproduced or used to manufacture anything shown hereon without permission from THE TECHNICAL MATERIEL CORPORATION to the user. This drawing is loaned for mutual assistance and is subject to recall at any time.		

DECIMALS	FRACTIONS
X ± .05	1/64
.XX ± .01	ANGLES
.XXX ± .005	0° - 30'
UNLESS OTHERWISE SPECIFIED DIMENSIONS ARE IN INCHES AND INCLUDE CHEMICALLY APPLIED OR PLATED FINISHES	
FINISH	S404 YELLOW IRIDITE
MATERIAL	5052-H32 ALUM

DATE	11/7/68
DATE	4/5/68
DATE	11/29/62
DATE	

SIZE	CODE IDENT. NO.	DWG NO.	ISSUE
B	82679	MSS345	Ø
SCALE	SHEET OF		