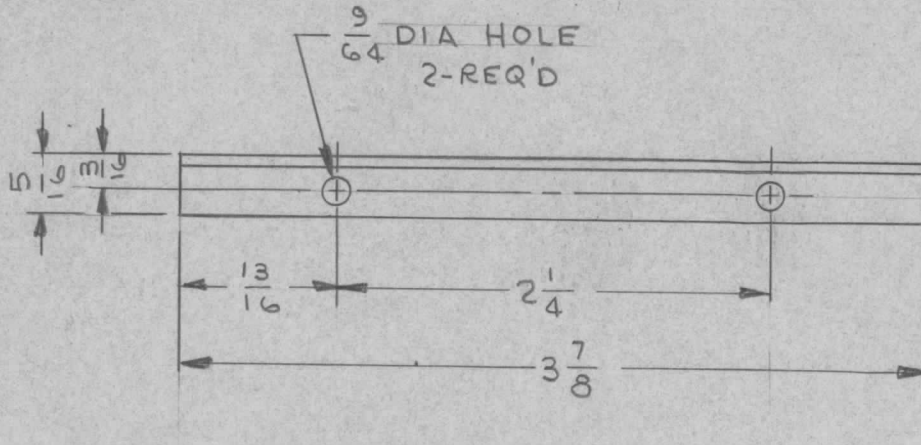


APPLICATION

REVISIONS

QTY	MODEL USED ON	ASS'Y NO.	LTR	DESCRIPTION	DATE	E.M.N.NO	DRAFT	CHKD	APPD
6	HFSR-4		Ø	ORIG. RELEASE FOR PROD.	11-6-68	Ø	R.G.		<i>JL</i>



UNLESS OTHERWISE SPECIFIED DIMENSIONS ARE IN INCHES AND INCLUDE CHEMICALLY APPLIED OR PLATED FINISHES

REQ'D	ITEM	PART NUMBER	DESCRIPTION	SYM.
-------	------	-------------	-------------	------

LIST OF MATERIAL SK 3252-004-25

DECIMALS FRACTIONS  
 .X ± .05 1/64  
 .XX ± .01 TOLS. ANGLES  
 .XXX ± .005 0°-30'

FINAL APPROVAL <i>[Signature]</i>	DATE 11/6/68
MECH. DES. M. ZETENA	DATE
ELECT. DES.	DATE
CHECKED <i>[Signature]</i>	DATE 10/30/68
DRAWN JL	DATE 9/27/67

THE TECHNICAL MATERIEL CORP.  
 MAMARONECK, NEW YORK

MATERIAL .063 THK ALUM. 5052-H32  
 FINISH YELLOW IRIDITE 5404

STIFFENER - LEDEX P.C. CARD

NOTICE TO PERSONS RECEIVING THIS DRAWING  
 THE TECHNICAL MATERIEL CORPORATION claims proprietary right in the material disclosed hereon. This drawing is issued in confidence for engineering information only and may not be reproduced or used to manufacture anything shown hereon without permission from THE TECHNICAL MATERIEL CORPORATION to the user. This drawing is loaned for mutual assistance and is subject to recall at any time.

SIZE A	CODE IDENT. NO. 82679	DWG NO. MS5342	ISSUE Ø
SCALE		SHEET OF	