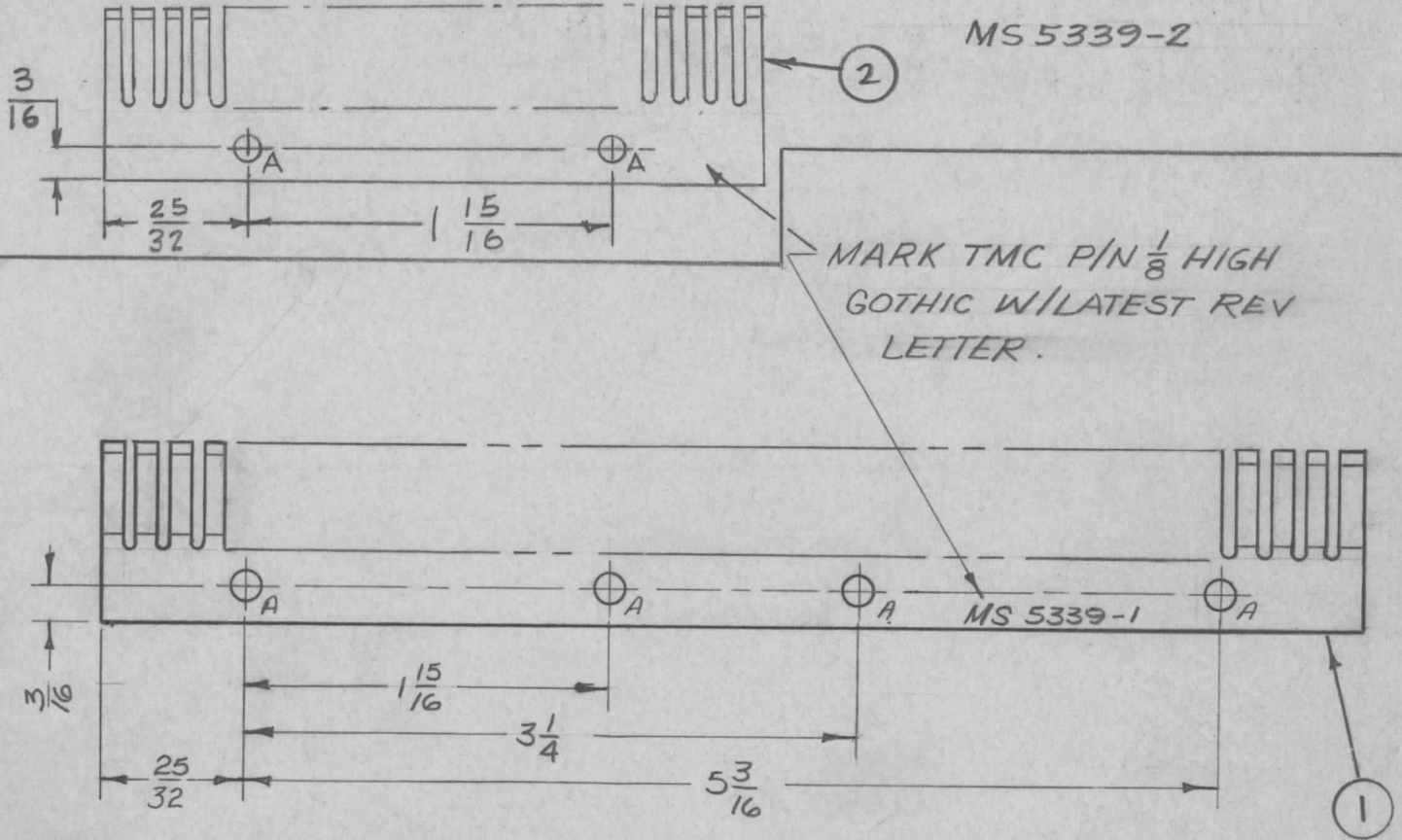


APPLICATION			REVISIONS						
QTY	MODEL USED ON	ASS'Y NO.	LTR	DESCRIPTION	DATE	E.M.N.NO	DRAFT	CHKD	APPD
2	MMX(-)-2		X	EXP. RELEASE	2/2/68	#			
2	VOX-7		Ø	ORIG. RELEASE FOR PROD.	3/13/69		RG		
2	MMX-1		A	ADD - 2	9/12/71	21574		KP	✓
2	CHG(-)4								



HOLE	DESCRIPTION	REQ.
A	9/64 DIA.	4

REQ'D	ITEM	PART NUMBER	DESCRIPTION	SYM.
2		FP160C3.500P	CONTACT ELECTRICAL	
2	1	FP160C6.750P	CONTACT ELECTRICAL	1

O. POSE

FINAL APPROVAL	DATE
MECH. DES.	DATE
ELECT. DES.	DATE
CHECKED	DATE
DRAWN	DATE

LIST OF MATERIAL

**THE TECHNICAL MATERIEL CORP.**  
MAMARONECK, NEW YORK

**CONTACT, ELECTRICAL**

<p>NOTICE TO PERSONS RECEIVING THIS DRAWING</p> <p>THE TECHNICAL MATERIEL CORPORATION claims proprietary right in the material disclosed hereon. This drawing is issued in confidence for engineering information only and may not be reproduced or used to manufacture anything shown hereon without permission from THE TECHNICAL MATERIEL CORPORATION to the user. This drawing is loaned for mutual assistance and is subject to recall at any time.</p>				<p>SIZE</p> <p>A</p>	<p>CODE IDENT. NO.</p> <p>82679</p>	<p>DWG NO.</p> <p>MS 5339</p>	<p>ISSUE</p> <p>A</p>
SCALE 1:1			SHEET OF				