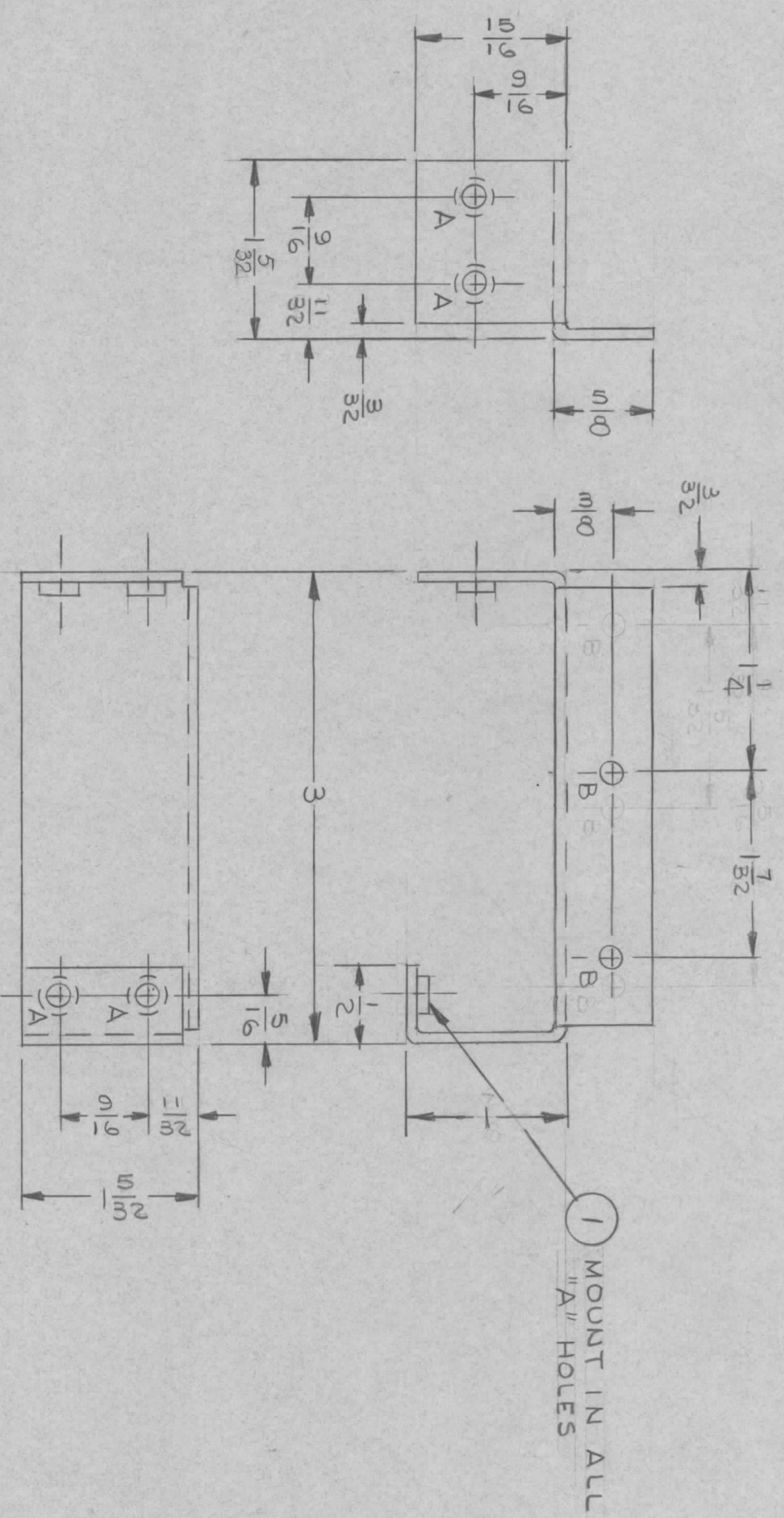


REVISIONS						
ZONE	LTR	DESCRIPTION	DATE	E.M.N.NO	DRAFT	CHKD
	Ø	ORIG. RELEASE FOR PROD	11-7-68	Ø	R.G.	
CS	A	15/32 WAS 1 9/64	2/18/69	19235	GE	



HOLE LEGEND		
HOLE	DESCRIPTION	REQ
A	.161-.164 DIA	4
B	9/64 DIA	2

QTY / UNIT	MSAR-4	ASS'Y NO.
APPLICATION		
CODE		

NOTICE TO PERSONS RECEIVING THIS DRAWING
 THE TECHNICAL MATERIEL CORPORATION claims proprietary right in the material disclosed hereon. This drawing is issued in confidence for engineering information only and may not be reproduced or used to manufacture anything shown hereon without permission from THE TECHNICAL MATERIEL CORPORATION to the user. This drawing is loaned for mutual assistance and is subject to recall at any time.

REQ'D ITEM	PART NUMBER	DESCRIPTION	SYM.
4	NT129-440-4	NUT, PLAIN, SPLINE	A

LIST OF MATERIAL			
FINAL APPROVAL	MECH. DES.	ELECT. DES.	DATE
<i>[Signature]</i>	<i>[Signature]</i>		11-5-68
			7/28/67
			7/27/67

<p>UNLESS OTHERWISE SPECIFIED DIMENSIONS ARE IN INCHES AND INCLUDE CHEMICALLY APPLIED OR PLATED FINISHES</p>			
DECIMALS	FRACTIONS	TOLS.	ANGLES
X ± .05	1/64	.XX ± .01	0° - 30'
.XXX ± .005			
MATERIAL			
.063 THK ALUMINUM			
5052-H32			
FINISH			
YELLOW IRIDIOTE			
5404			
SK 3252-005-1D	SCALE	SIZE	CODE IDENT. NO.
		B	82679
			DWG NO. MS 5335
			ISSUE A

THE TECHNICAL MATERIEL CORP.
 MAMARONECK, NEW YORK

SUPPORT BKT