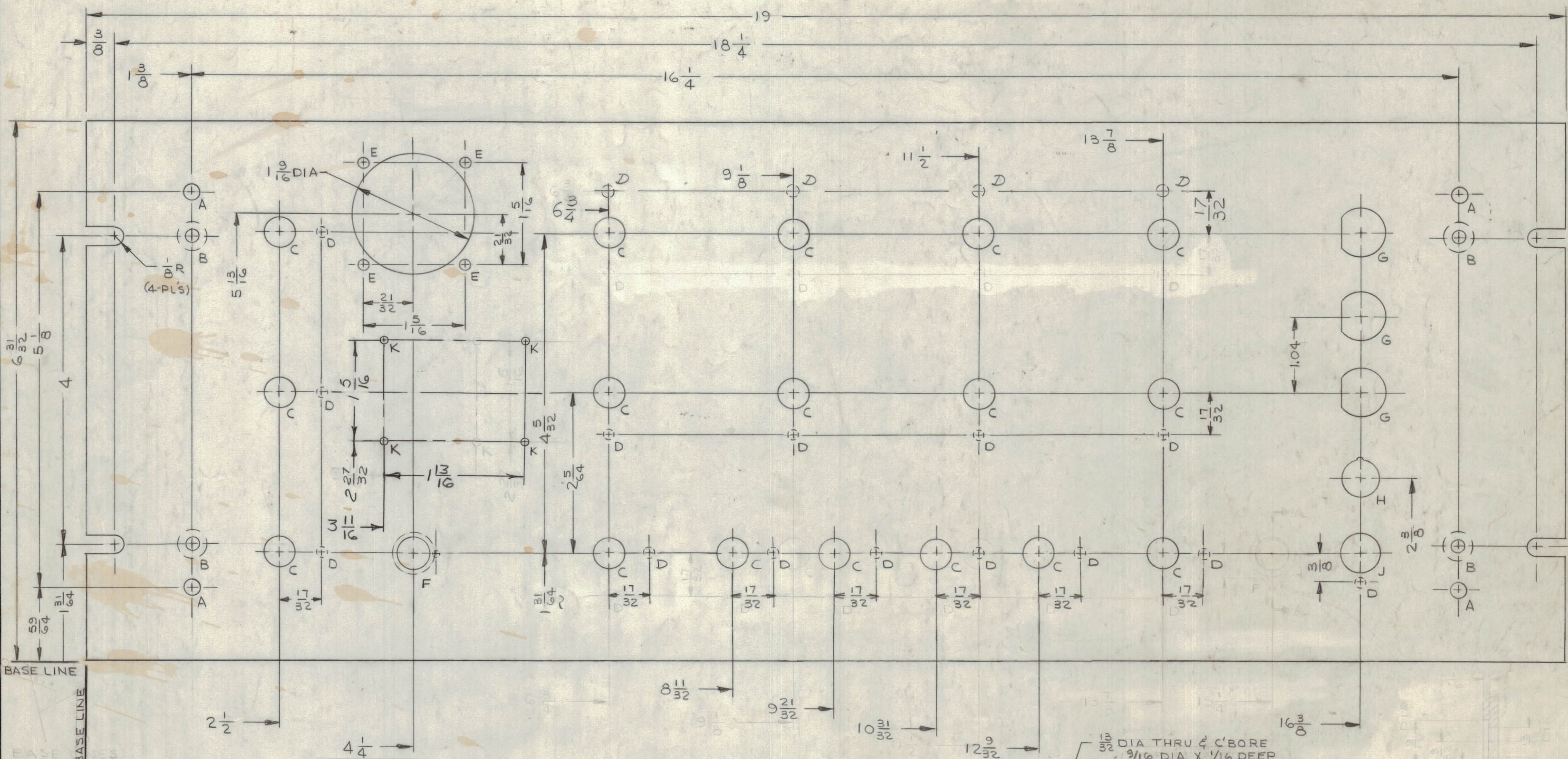
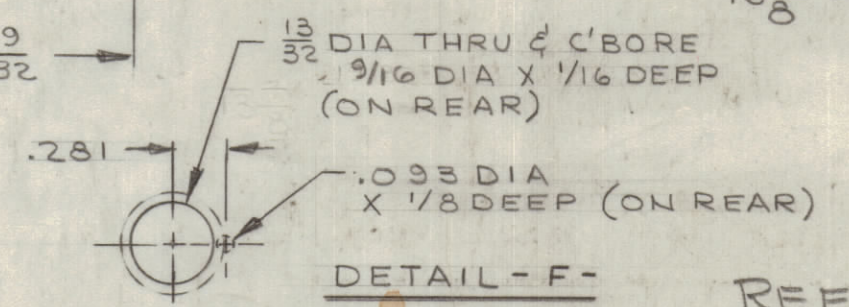
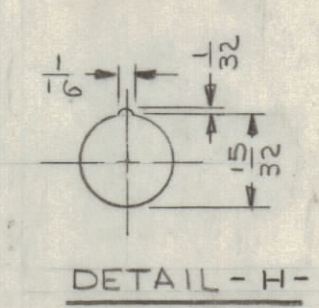
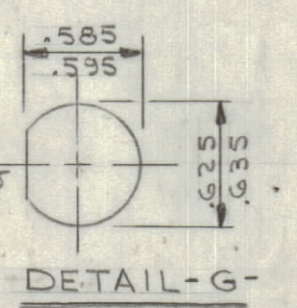


REVISIONS						
ZONE	LTR	DESCRIPTION	DATE	E.M.N.NO	DRAFT	CHKD APPD
X4		ADD 'K' HOLES	3-3-68			
		ORIGINAL RELEASE FOR PRODUCTION	11-7-68			
1		(4) 'D' HOLES TURNED 180° (TOP OF PANEL 8-21-69 19550)	19550			



- FINISH NOTES:**
- S404 - IRIDITE 14-2 AL-COAT.
 - S114 - ZINC CHROMATE PRIMER
 - FORMULA NO III, CLASS 2 SEMI-GLOSS ENAMEL PER MILITARY SPEC. MIL-E-15090 COLOR 26307
- MACHINING:**
- MILL ALL EDGES.
 - HOLES MUST BE DRILLED, UNLESS OTHERWISE SPECIFIED.
 - LATERAL BOW OF PANEL MUST BE KEPT TO .031 TOLERANCE.
 - PANEL MUST BE FREE OF ALL MACHINING MARKS, GOUGES AND SCRATCHES. IF NECESSARY, SAND FRONT OF PANEL WITH NO. 120 GRIT SANDPAPER.



HOLE LEGEND		
HOLE	DESCRIPTION	REQ.
A	13/64 DIA	4
B	.196 DIA & C'SINK 82° TO .390 DIA (ON REAR)	4
C	13/32 DIA	17
D	5/32 DIA X 1/8 DP (ON REAR)	18
E	9/64 DIA	4
F	SEE DETAIL	1
G	SEE DETAIL	3
H	SEE DETAIL	1
J	1/2 DIA	1
K	NO.48(.0760)DR	4

APPLICATION		
QTY / UNIT	MODEL USED ON	ASS'Y. NO.
	MSAR-4	
	CODE	

NOTICE TO PERSONS RECEIVING THIS DRAWING
 THE TECHNICAL MATERIEL CORPORATION claims proprietary right in the material disclosed herein. This drawing is issued in confidence for engineering information only and may not be reproduced or used to manufacture anything shown herein without permission from THE TECHNICAL MATERIEL CORPORATION to the user. This drawing is loaned for mutual assistance and is subject to recall at any time.

QTY. REQ.	ITEM	PART NO.	DESCRIPTION	SYMBOL
HOGAN ZETENA LIST OF MATERIAL				
FINAL APPROVAL		DATE	THE TECHNICAL MATERIEL CORP. MAMARONECK, NEW YORK	
MECH. DES.		DATE		
ELECT. DES.		DATE		
CHECKED		DATE		
DRAWN		DATE	PANEL, FRONT	
MATERIAL			SIZE	CODE
FINISH			IDENT. NO.	DWG. NO.
TOLERANCES ON			SCALE	ISSUE
DECIMALS			1/1	SHEET
FRACTIONS				OF
.X ± .05				
.XX ± .01				
.XXX ± .005				
ANGLES				
± 0° -30'				