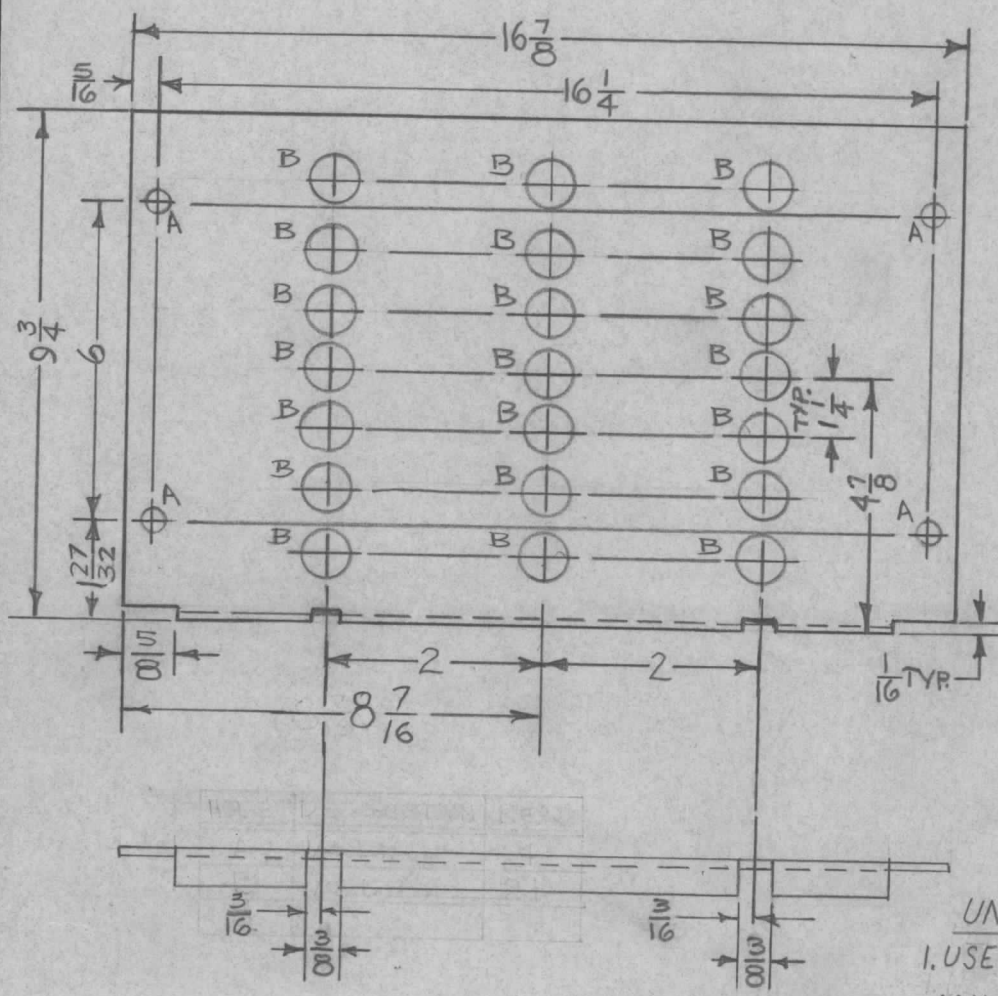


APPLICATION				REVISIONS						
QTY	MODEL USED ON	ASS'Y NO.	LTR	DESCRIPTION	DATE	E.M.N.NO	DRAFT	CHKD	APPD	
1	SWCD-3K		X1	3/8" WAS 5/16	1-30-68		A.P.		A.P.	
			Ø	ORIGINAL RELEASE FOR PRODUCTION	5/7/68	Ø	H.S.			



① TO BE SUPPLIED AND ASSEMBLED BY TMC.  
②

HOLE	DESCRIPTION	REQ.
A	1/4 DIA.	4
B	1/2 DIA.	21

MARK TMC F/N  
(MS 5312) 1/8" HIGH  
1/4" GOTHIC W/LATEST  
REV. LETTER

- UNLESS OTHERWISE SPECIFIED:
1. USE MATERIAL THICKNESS FOR MAXIMUM RADIUS ON ALL BENDS
  2. ALL ANGULAR BENDS 90 DEGREES
  3. REMOVE ALL BURRS & SHARP EDGES
  4. MOUNT INSERTS AFTER FINISHING

REQ'D	ITEM	PART NUMBER	DESCRIPTION	SYM.
4	2	FS109-3	RING, RETAINING	A
4	1	FS110-1	STUD, TURNLOCK	A

BUDETTI

FINAL APPROVAL	DATE
<i>[Signature]</i>	12-19-67
MECH. DES.	DATE
A. PETROCCA	12-19-67
ELECT. DES.	DATE
<i>[Signature]</i>	5-7-68
CHECKED	DATE
<i>[Signature]</i>	5-7-68
DRAWN	DATE
ALPETROCCA	12-19-67

LIST OF MATERIAL

**THE TECHNICAL MATERIEL CORP.**  
MAMARONECK, NEW YORK

COVER, TOP

UNLESS OTHERWISE SPECIFIED DIMENSIONS ARE IN INCHES AND INCLUDE CHEMICALLY APPLIED OR PLATED FINISHES

DECIMALS	FRACTIONS
.X ± .05	1/64
.XX ± .01	ANGLES
.XXX ± .005	0° - 30'

MATERIAL .051 THK ALUMINUM 5052-H32

FINISH S404 YEL. IRIDITE

S401-451

**NOTICE TO PERSONS RECEIVING THIS DRAWING**  
THE TECHNICAL MATERIEL CORPORATION claims proprietary right in the material disclosed hereon. This drawing is issued in confidence for engineering information only and may not be reproduced or used to manufacture anything shown hereon without permission from THE TECHNICAL MATERIEL CORPORATION to the user. This drawing is loaned for mutual assistance and is subject to recall at any time.

SIZE	CODE IDENT. NO.	DWG NO.	ISSUE
A	82679	MS 5312	Ø
SCALE	DO NOT SCALE	SHEET	OF